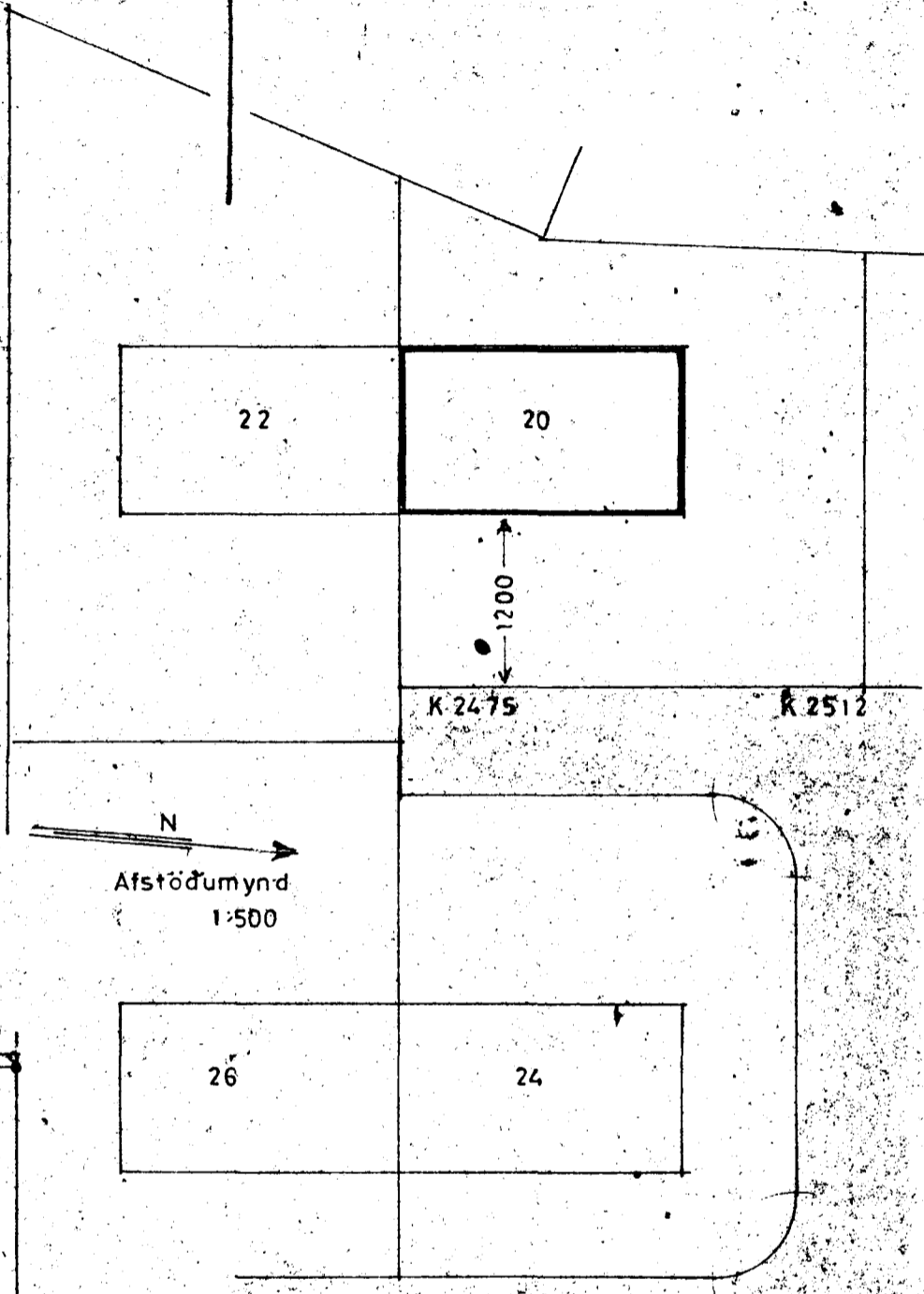
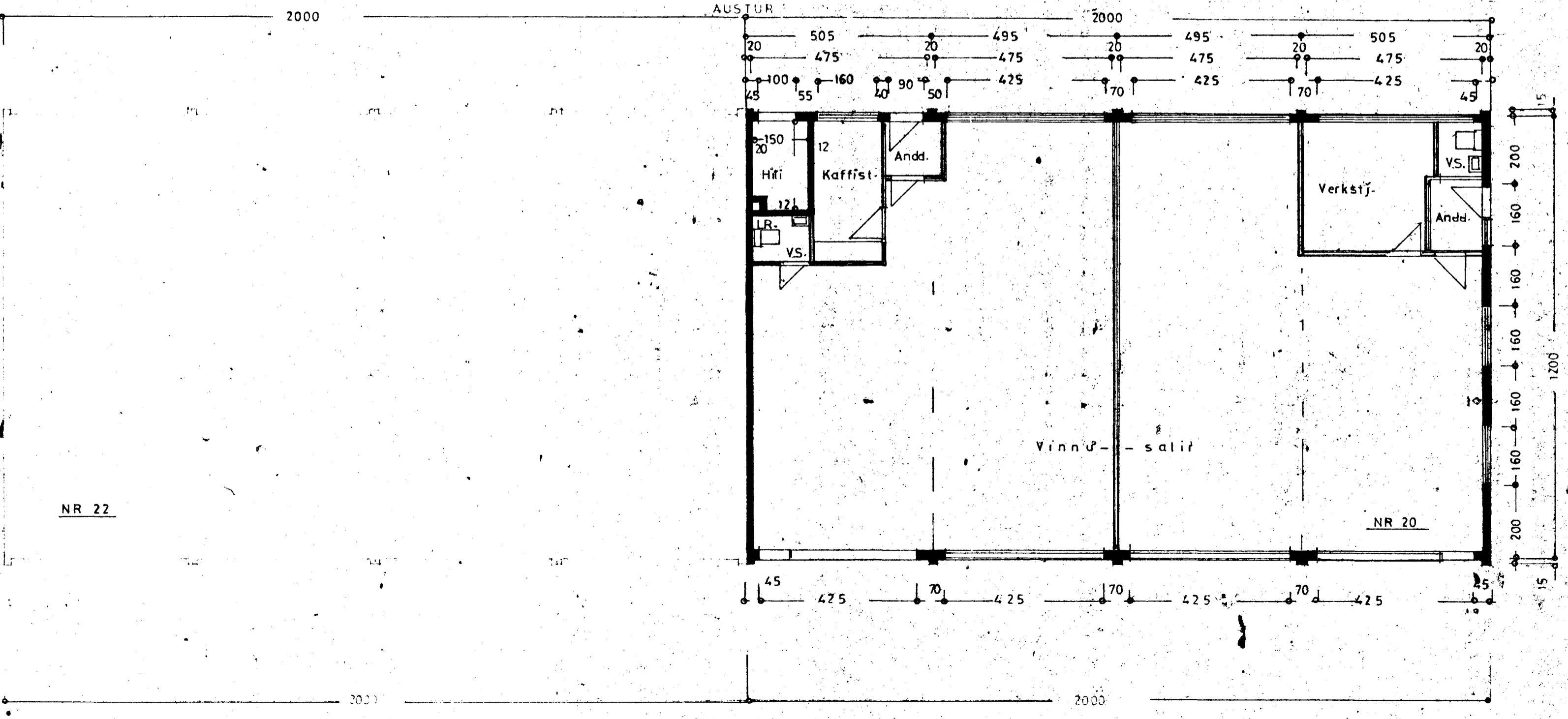
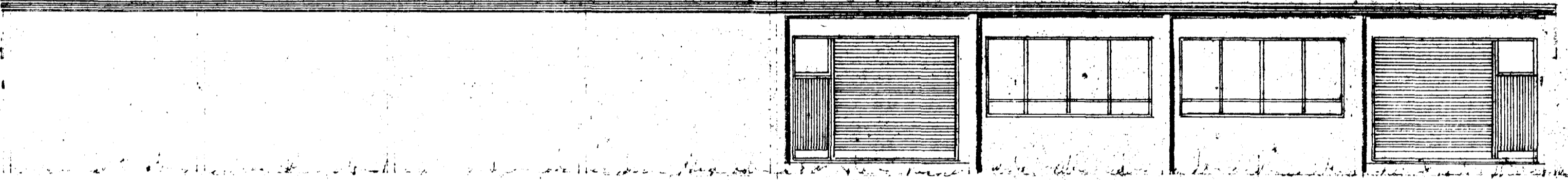
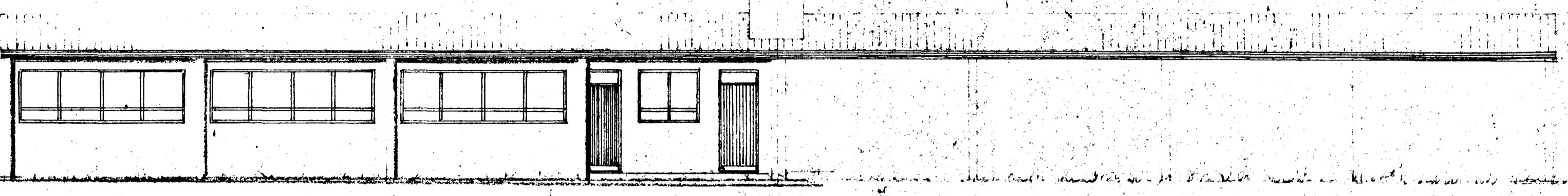
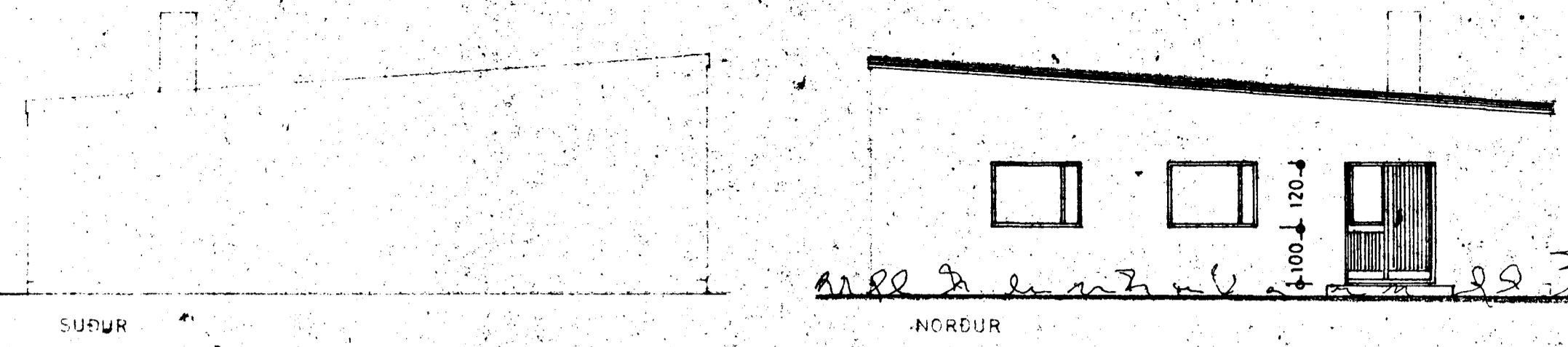
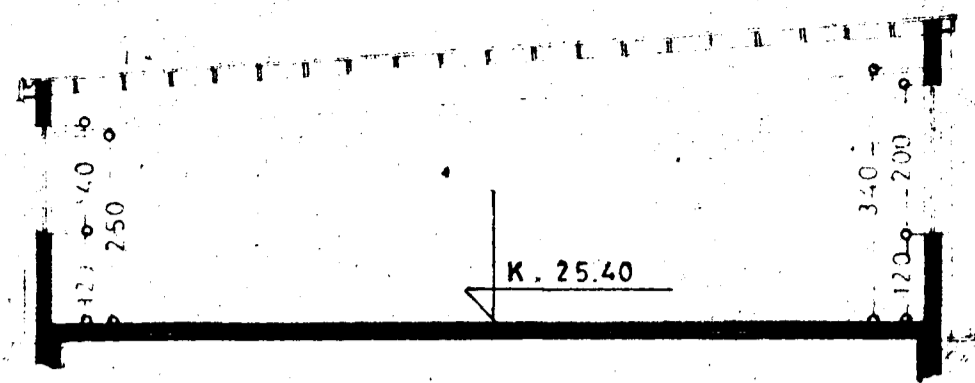


Samþykkt á fundi bygginga-  
nefndar þ. 13/9/72  
BYGGINGAFLUTRÚINN  
I HAFNARFIRÐI  
S. Sigurðsson



STÆRD:  
LÖB 1.052,6 m<sup>2</sup>  
HÚS 2400 m<sup>3</sup>, 871,0 m<sup>3</sup>

**DALSHRAUN NR. 20**

ÚTLIT  
GRUNNMÝND 1:100  
SNÍÐ  
AFSTÖÐUMÝND 1:500

Hafnarnefndin á ágúst '72  
S. Sigurðsson  
TEIKN.  
Lummi P.

NR 22

NR 20

GRUNNMÝND