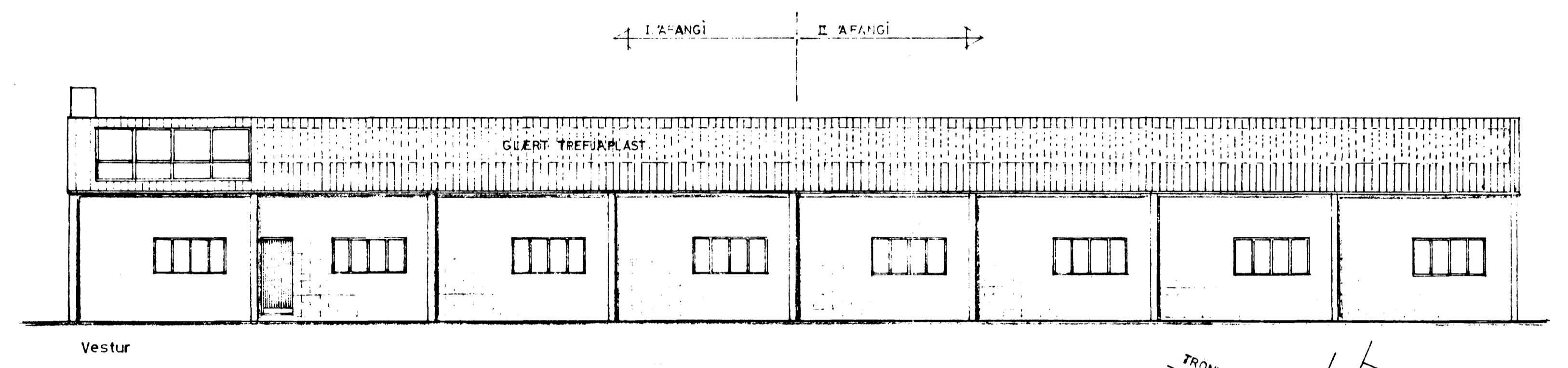
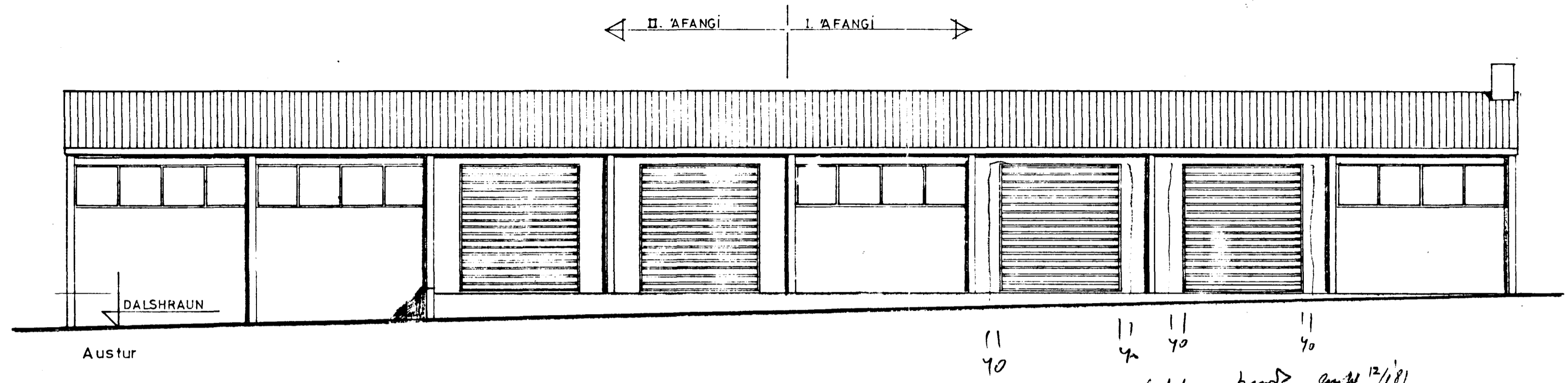
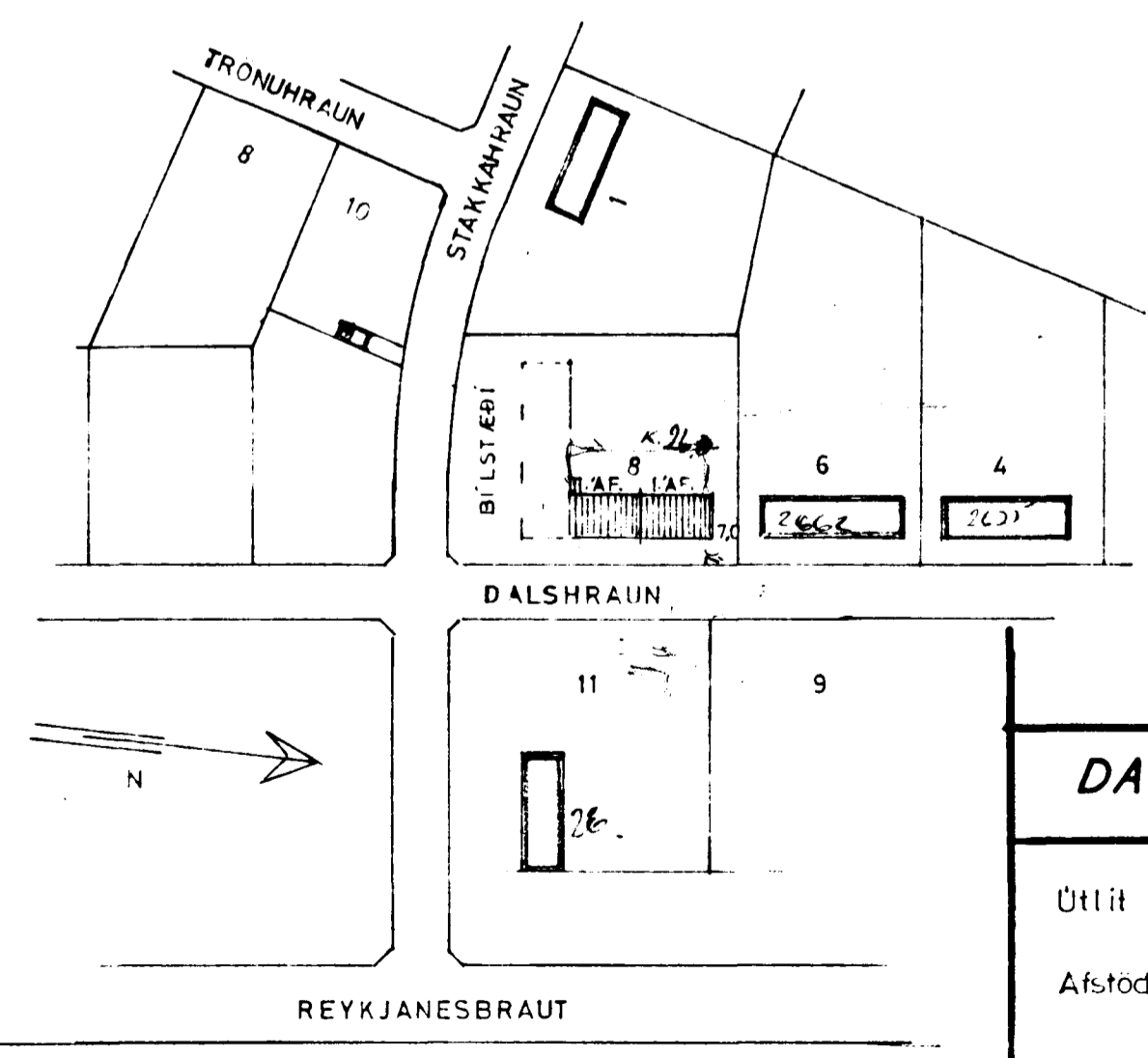
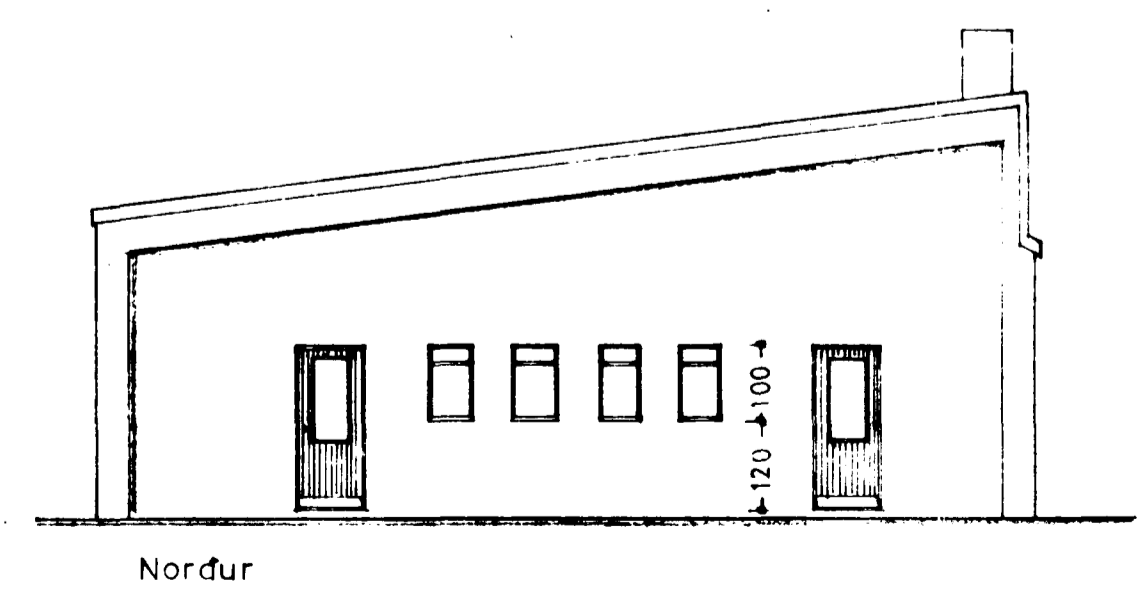
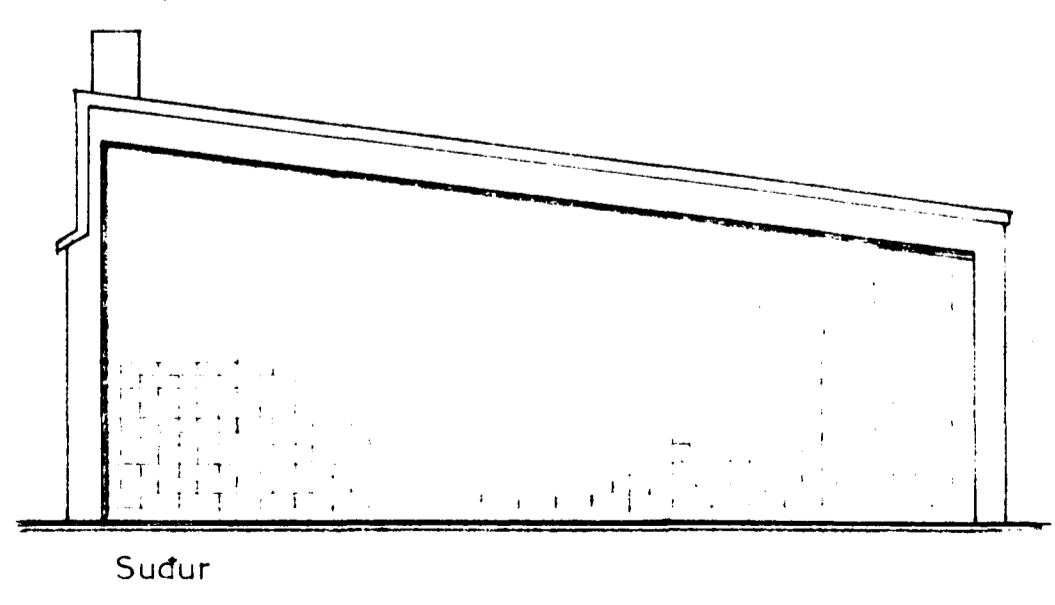


Samþykkt á fundi bygginga-
nefndar þ. 11.12. 1968
BYGGINGAFULLTRÚINN
Í HAENARFIRÐI
[Signature]



STÆRÐ:

LÖB	ca 4.900 m ²
HUS:	
I. áfangi	240,0 m ² 1.152,0 m ³
II. áfangi	237,6 m ² 1.140,5 m ³
Samtals	477,6 m ² 2.292,5 m ³



DALSHRAUN NR 8
I. OG II. AFANGI
BLAÐ 1
Útlit 1:100
Afstöðumynd 1:2000
Janúar síða des. 1968
[Signature]

Afstöðumynd 1:2000