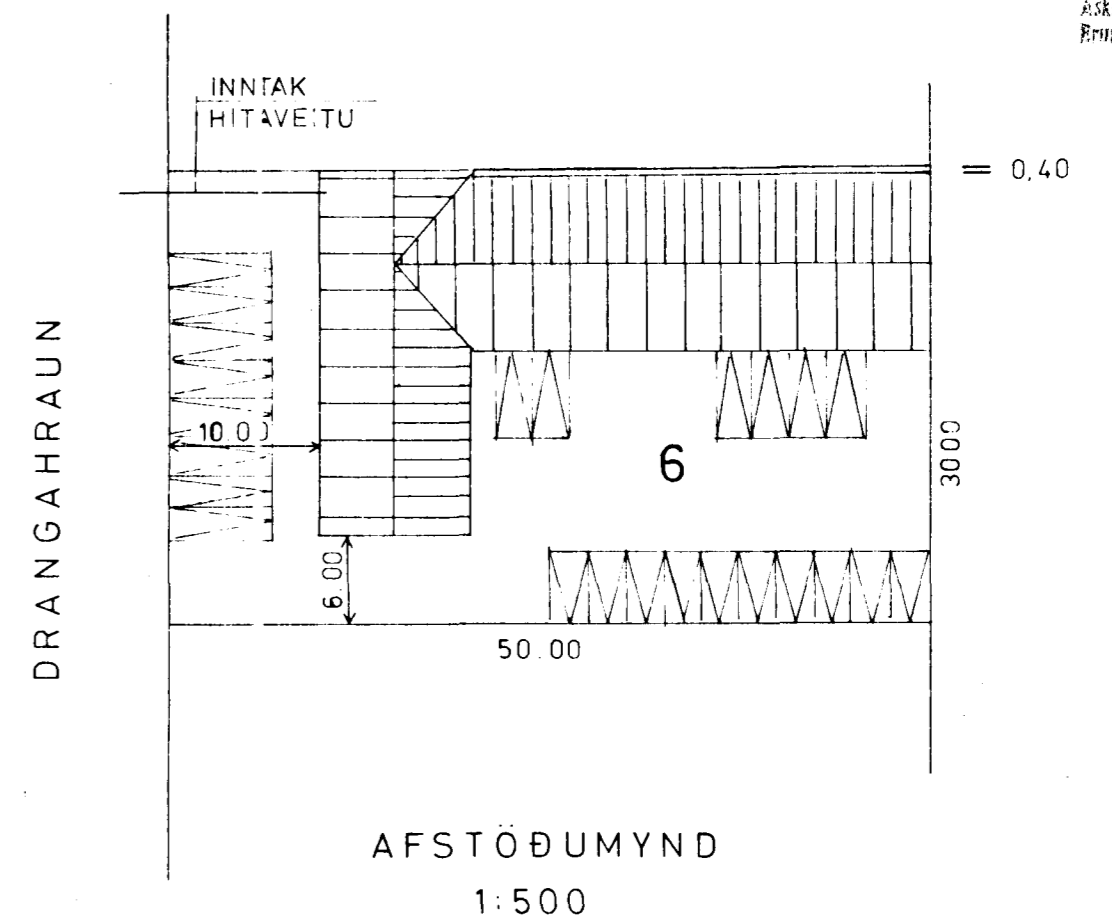
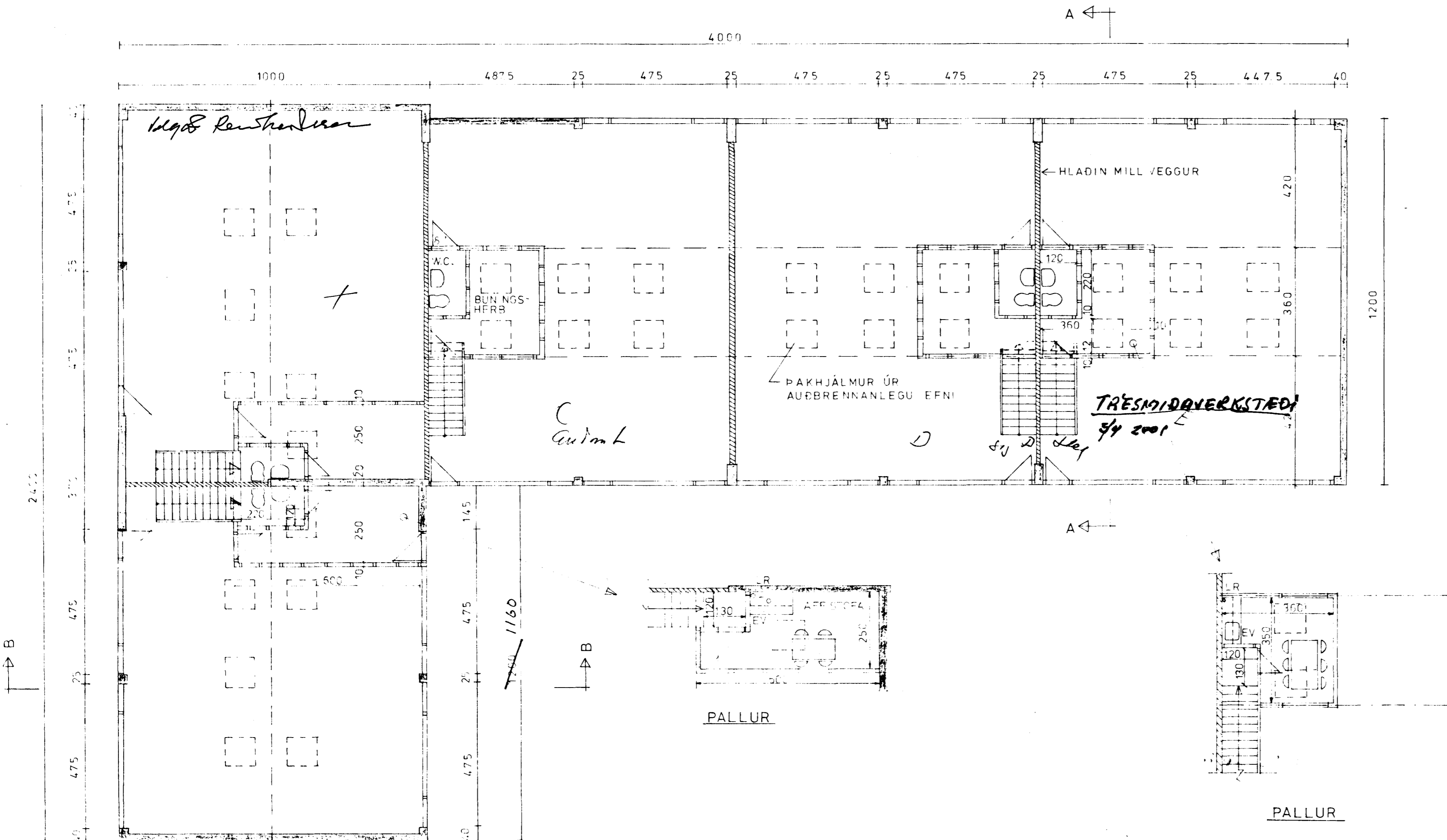
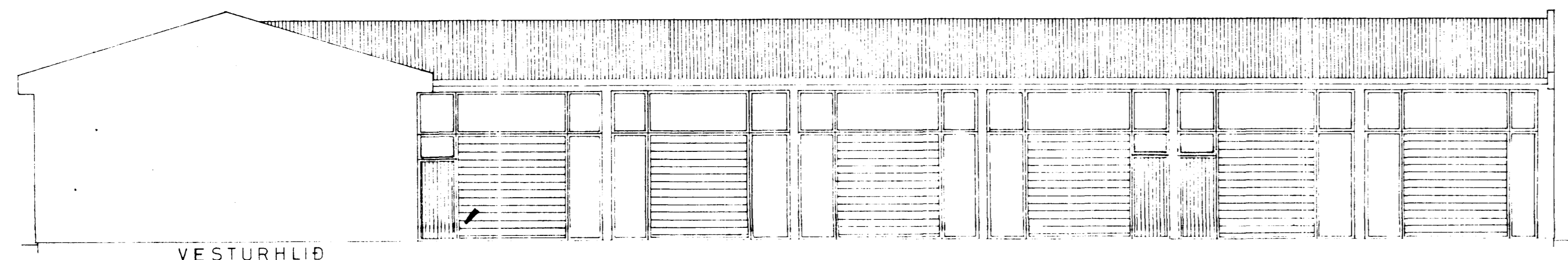


Samykktt á fundi bygginga-  
nefndar þ. 12.5.1982.  
BYGGINGAFULLTRÚINN  
Í HAFNARFIRDI  
*H. Gudmannson*

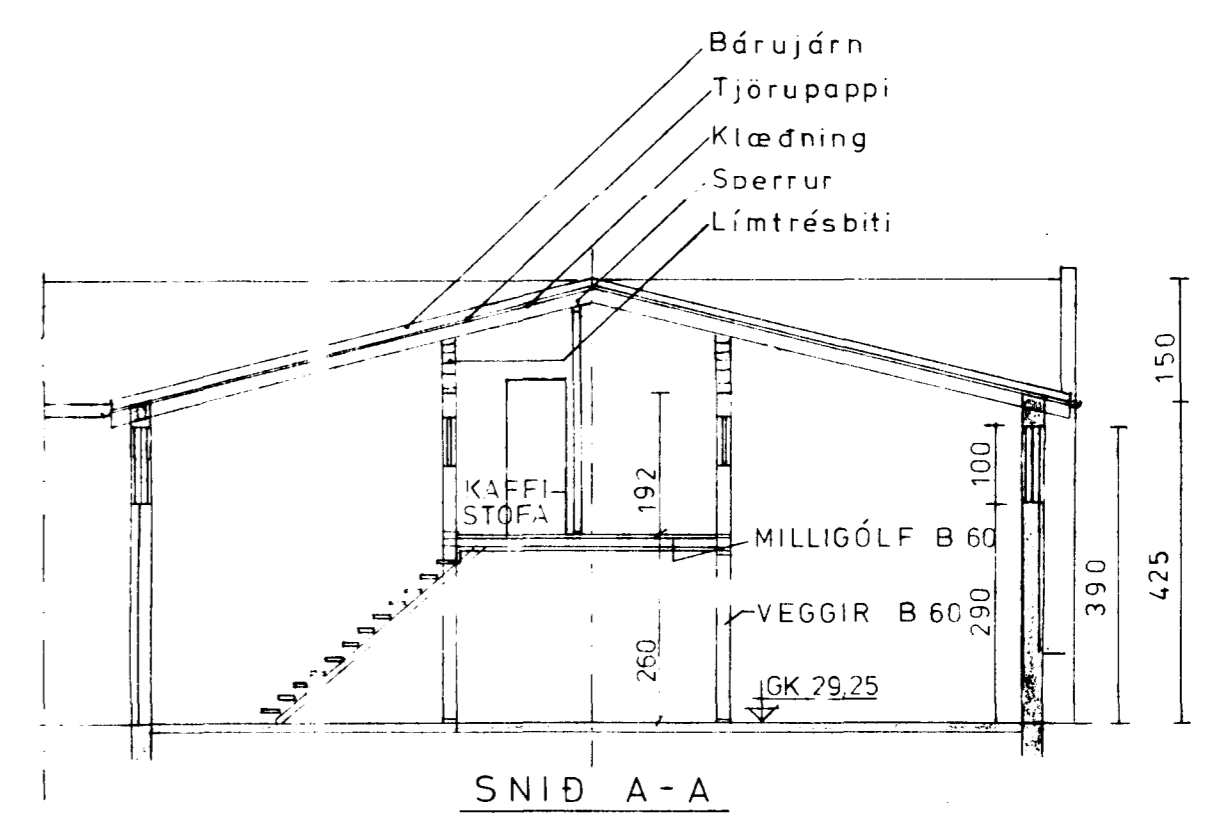
Áskildur af samþykktu  
Præmíuálagsskrá ríkisins  
Áskildur af samþykktu  
Heilbrigðisráðs háskólaþingarinnar



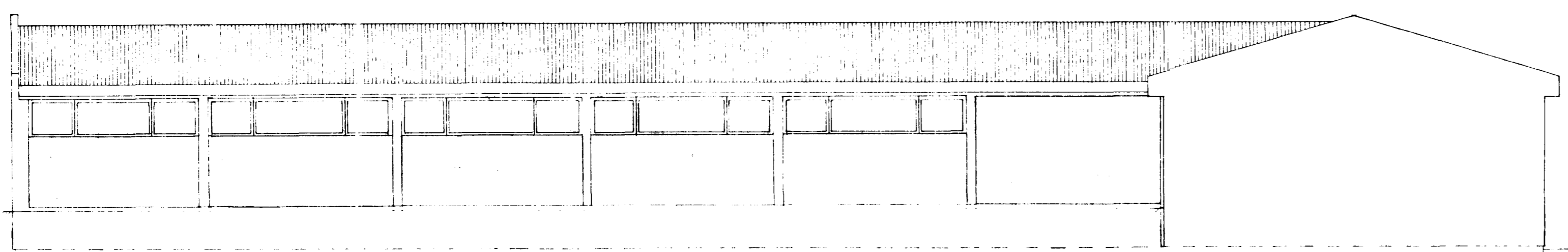
GRUNNMYND



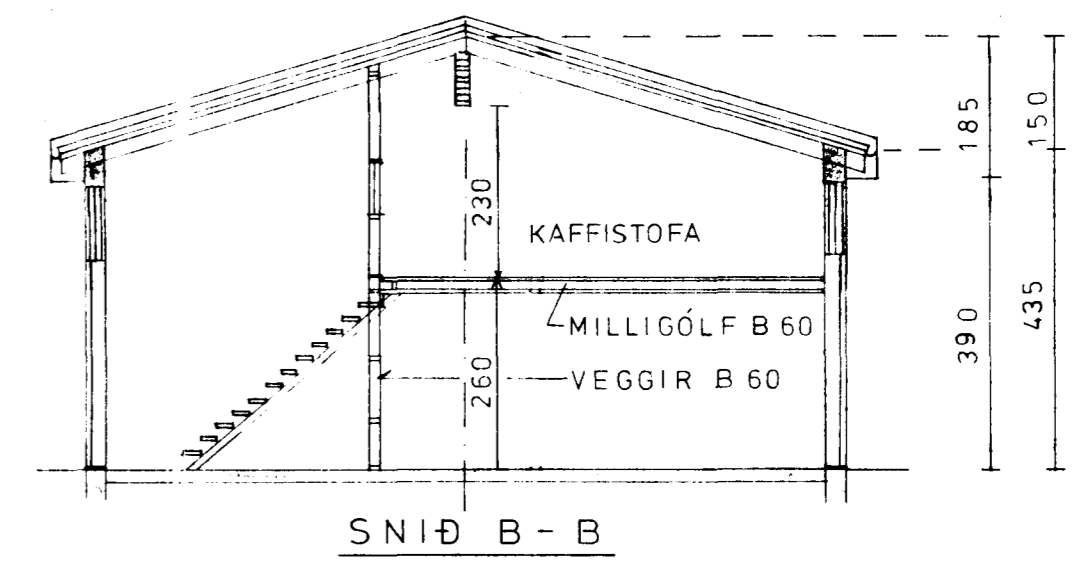
VESTURHLIÐ



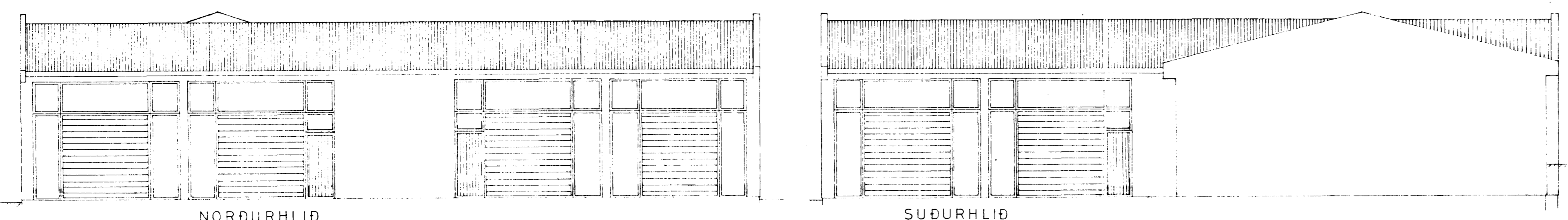
SNIÐ A-A



AUSTURHLIÐ



SNIÐ B-B



NÖRÐURHLIÐ

SUDURHLIÐ

$10 \times 24 = 240 \text{ m}^2 \times 51 = 1236 \text{ m}^3$   
 $6 \times 5,4 = 32,4 \text{ m}^2$   
 $12 \times 30 = 360 \text{ m}^2 \times 5,0 = 1800$   
 $3,6 \times 11,4 = 41,0 \text{ m}^2$   
673,0 m<sup>2</sup>      3030 m<sup>3</sup>

FLATARMÁL 600 m<sup>2</sup>  
PÚMMÁL 3030 m<sup>3</sup>

1840-0060 01

DRANGAHRÁUN 6 HAFNARFIRDI BIFREIDAVEKSTÆÐI	Mælikv 1.100 1.500	Dags Mars 82	Teikn nr 1.01
ÚTLIT, GRUNNMYND SNIÐ OG AFSTÖÐUMYND	Hannað MG Teiknað HO	Breytt 5.5.82	
Magnús R. Guðmannsson Verkfr. MVFÍ Holtsgötu 12 Njardvík sími 92-3176	H. Guðmannson		