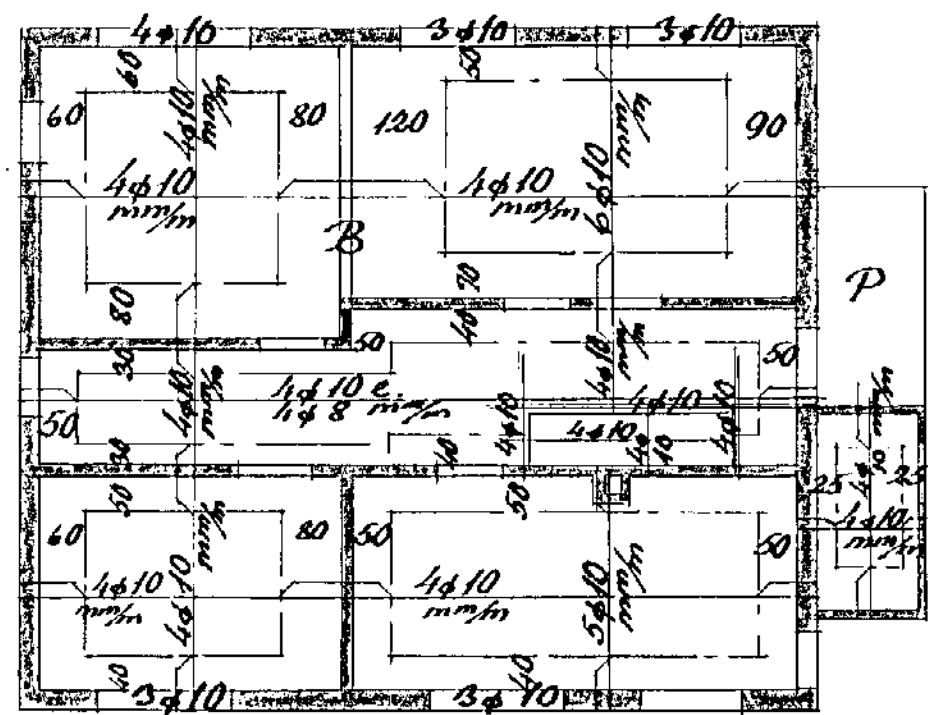


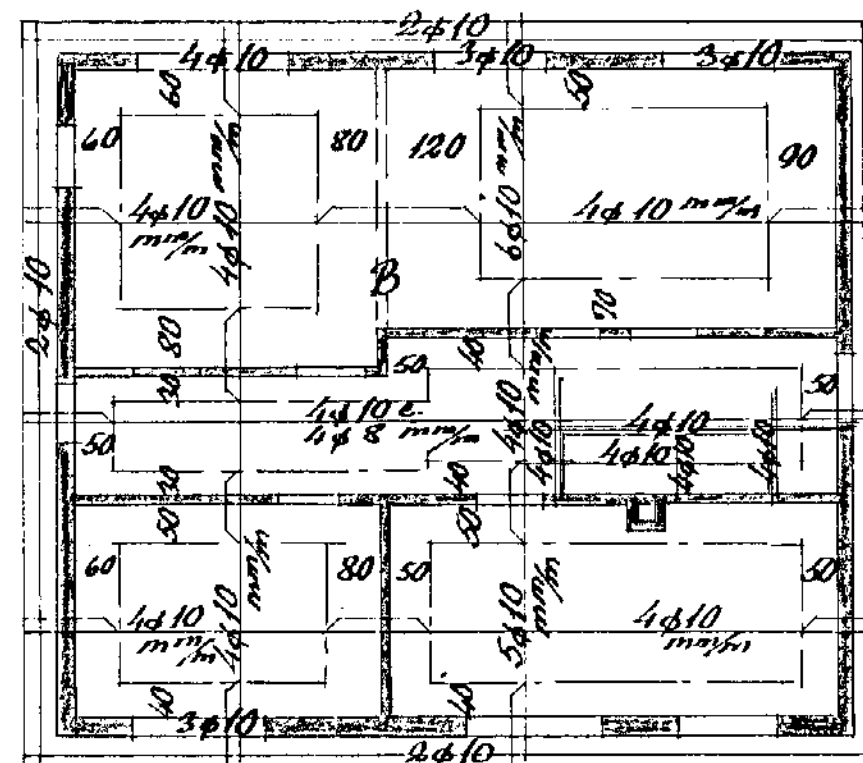
Blöndun steypu 1:2:3

Yfir dyr og glugga korni 2φ10, nema annað sé tekið fram

Plötupykkir allstaðar 12cm, nema pallur 14cm



Lofl yfir kjallara 1:100



Lofl yfir hæð 1:100

Hafnarf. í júní 1956

Sig. J. Ólafsson