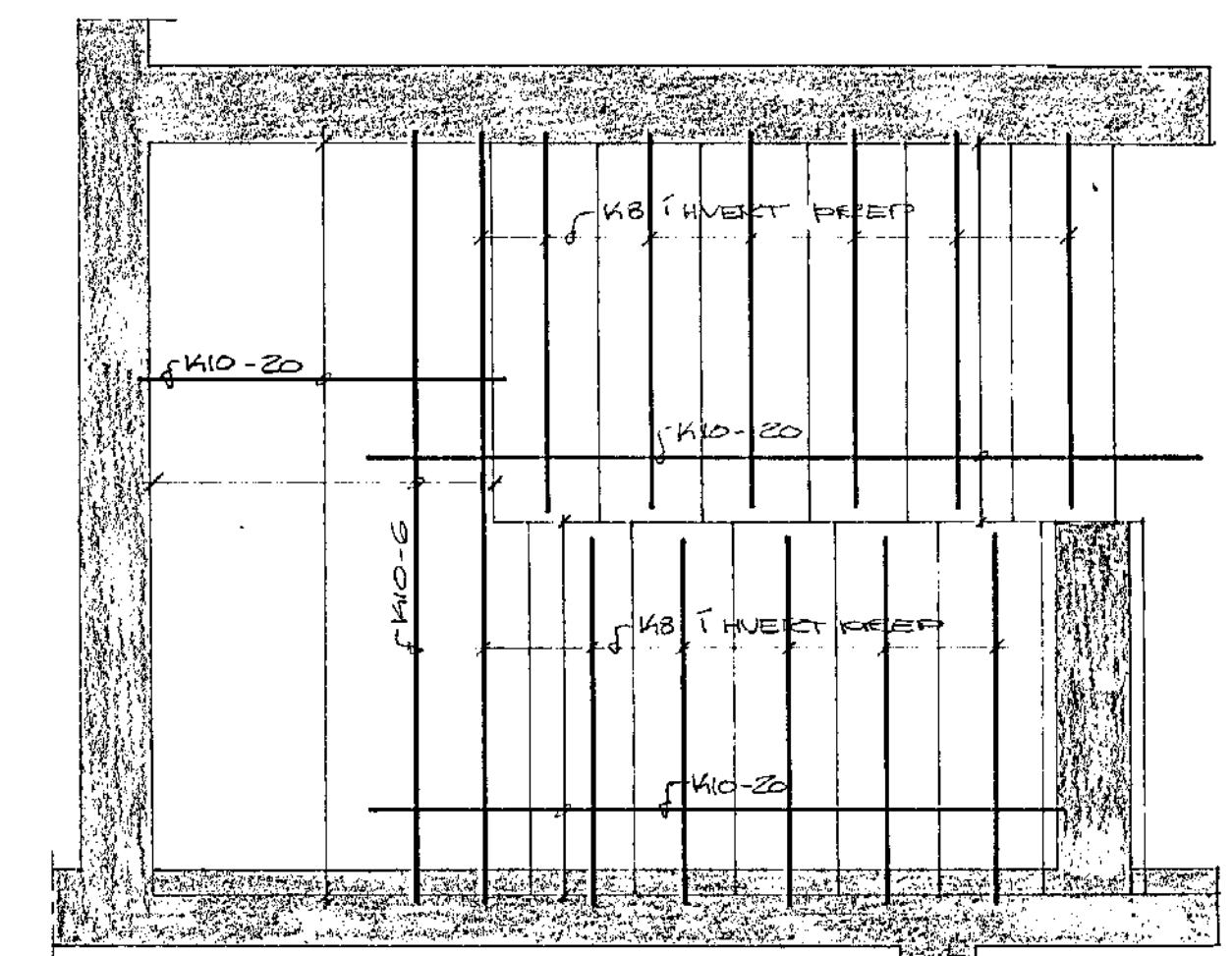
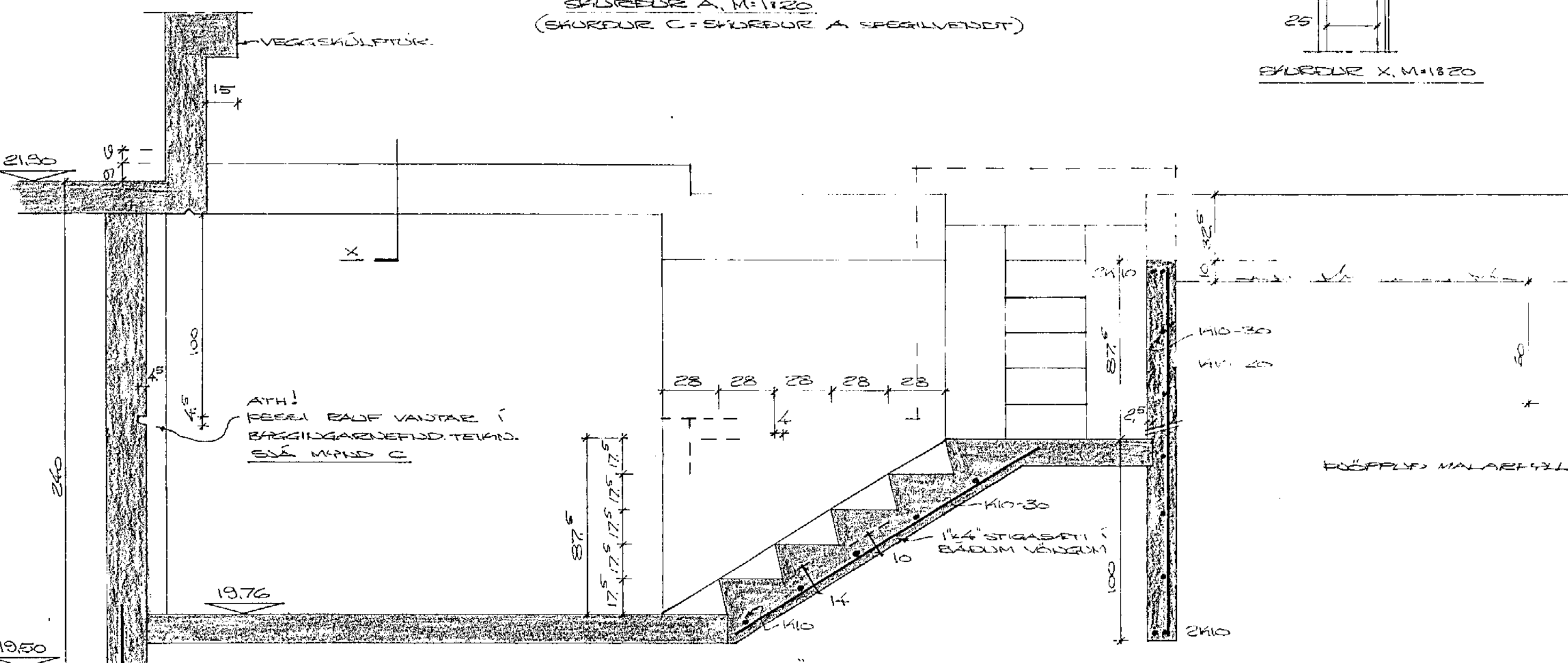


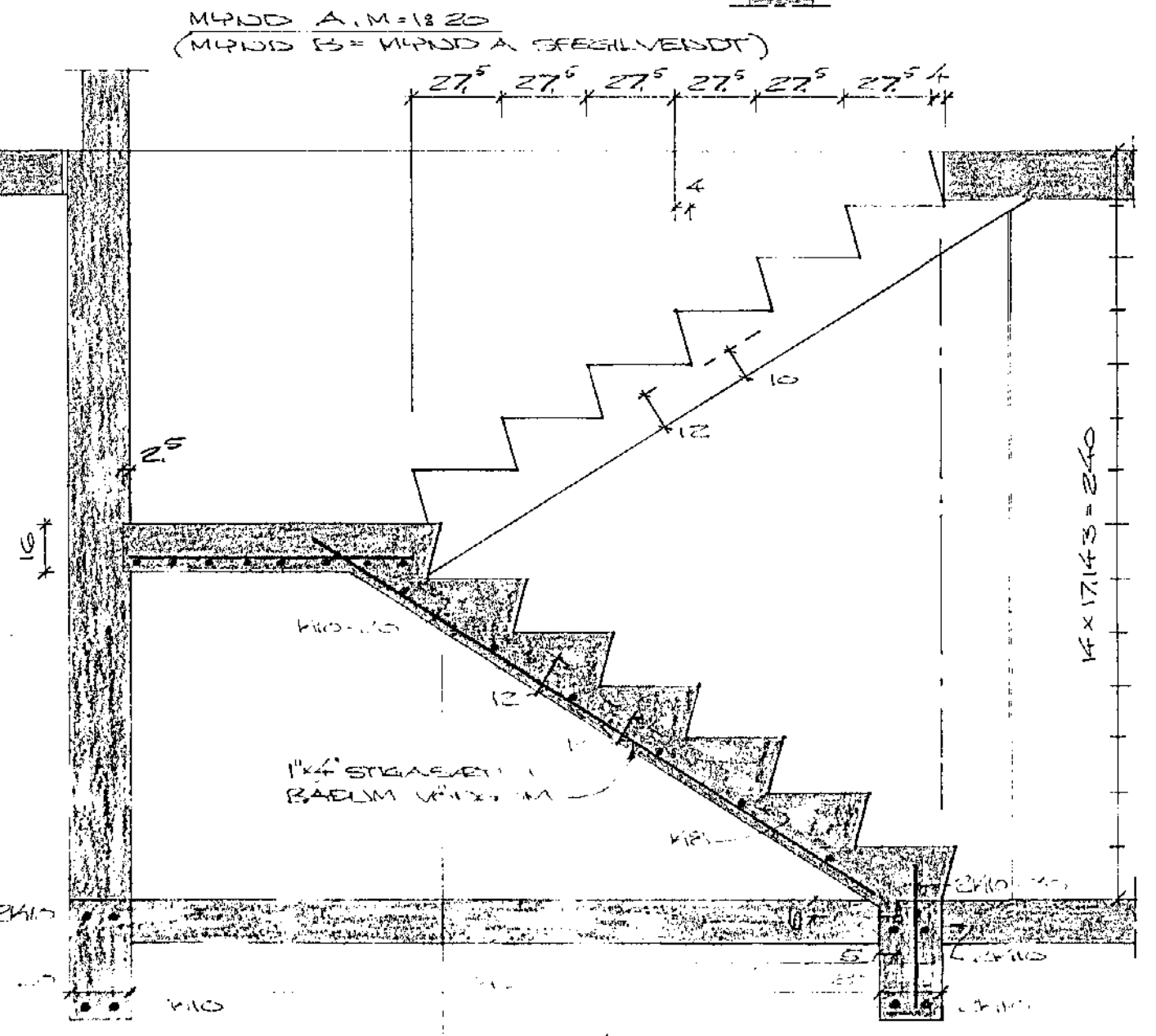
SKURDUR A, M. 1120  
(SKURDUR C + SKURDUR A SÆRILVENDT)



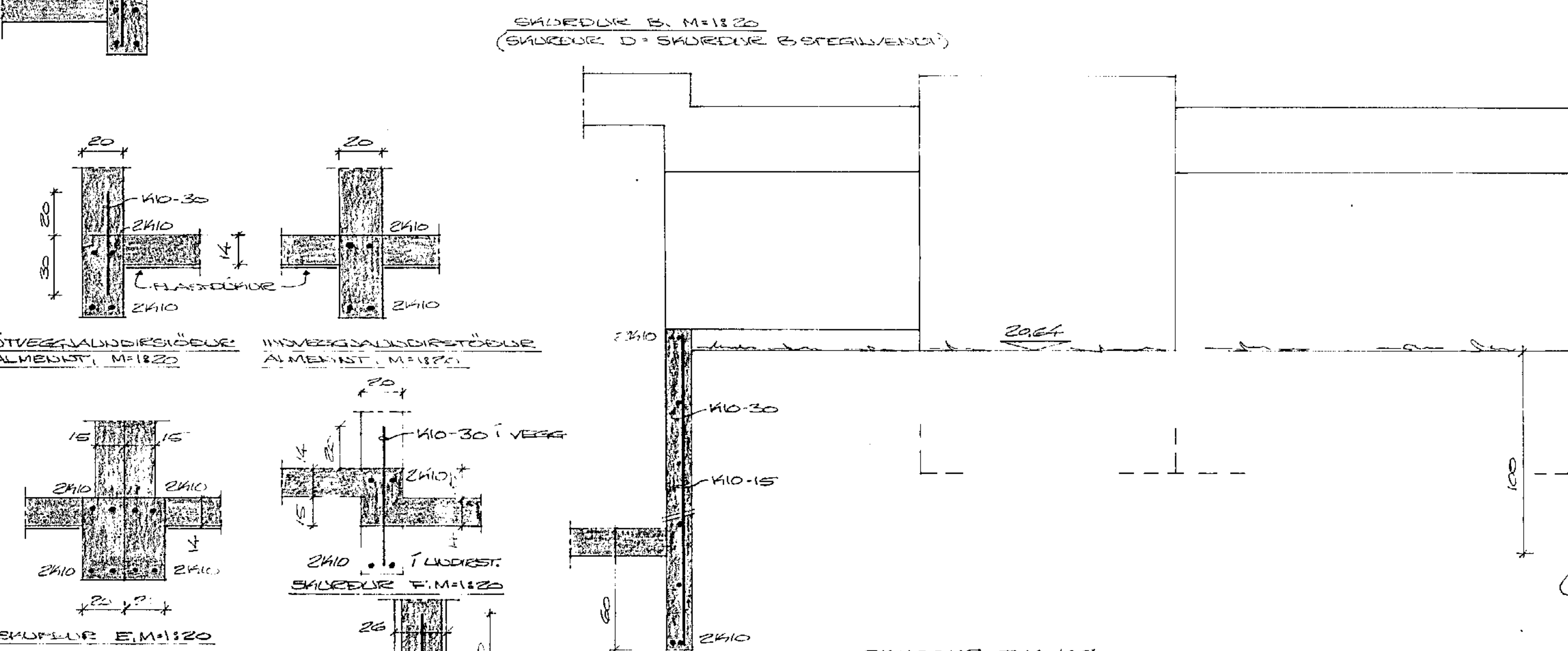
MIDD A, M. 1120  
(MIDD B + MIDD A SÆRILVENDT)



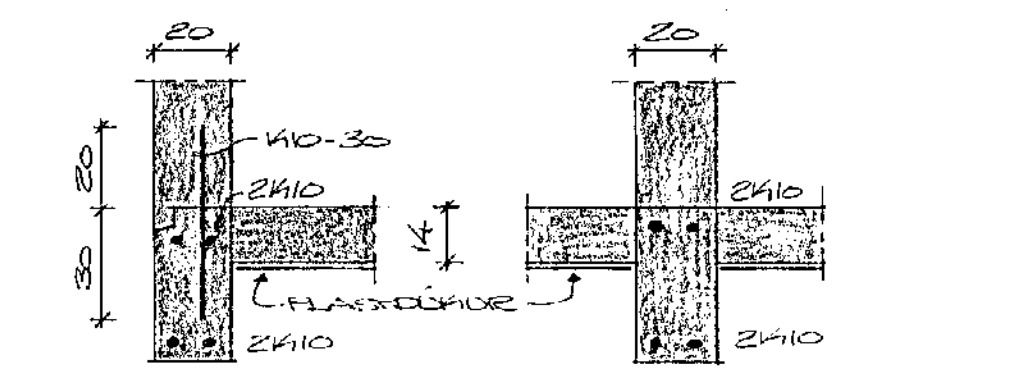
SKURDUR B, M. 1120  
(SKURDUR D + SKURDUR B SÆRILVENDT)



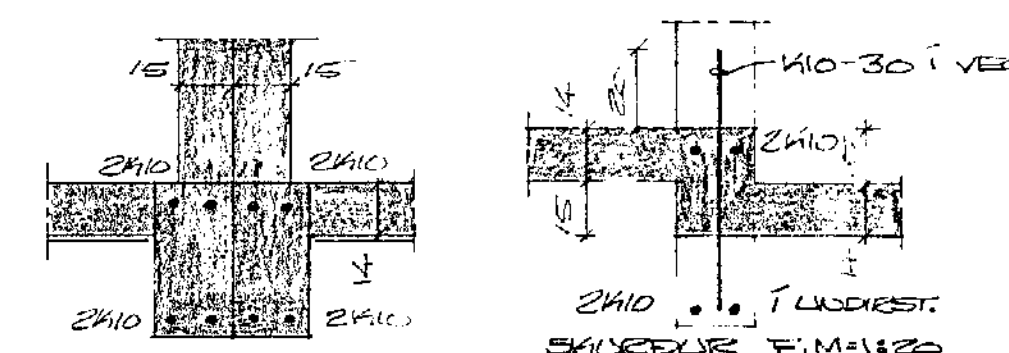
SKURDUR C, M. 1120



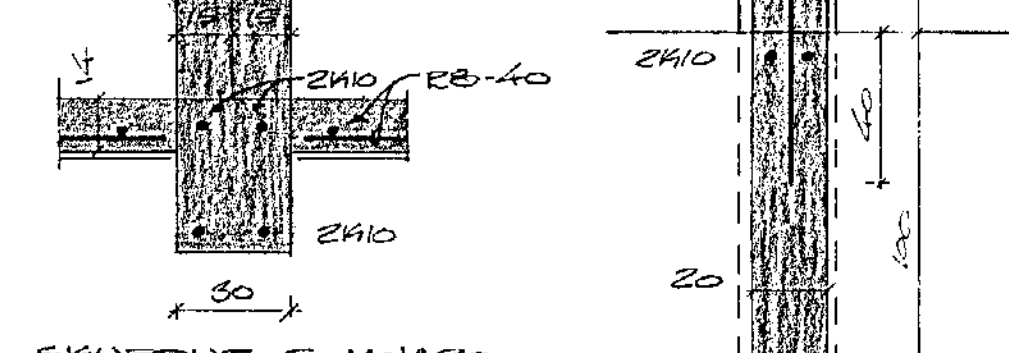
SKURDUR D, M. 1120  
(SKURDUR E + SKURDUR D SÆRILVENDT)



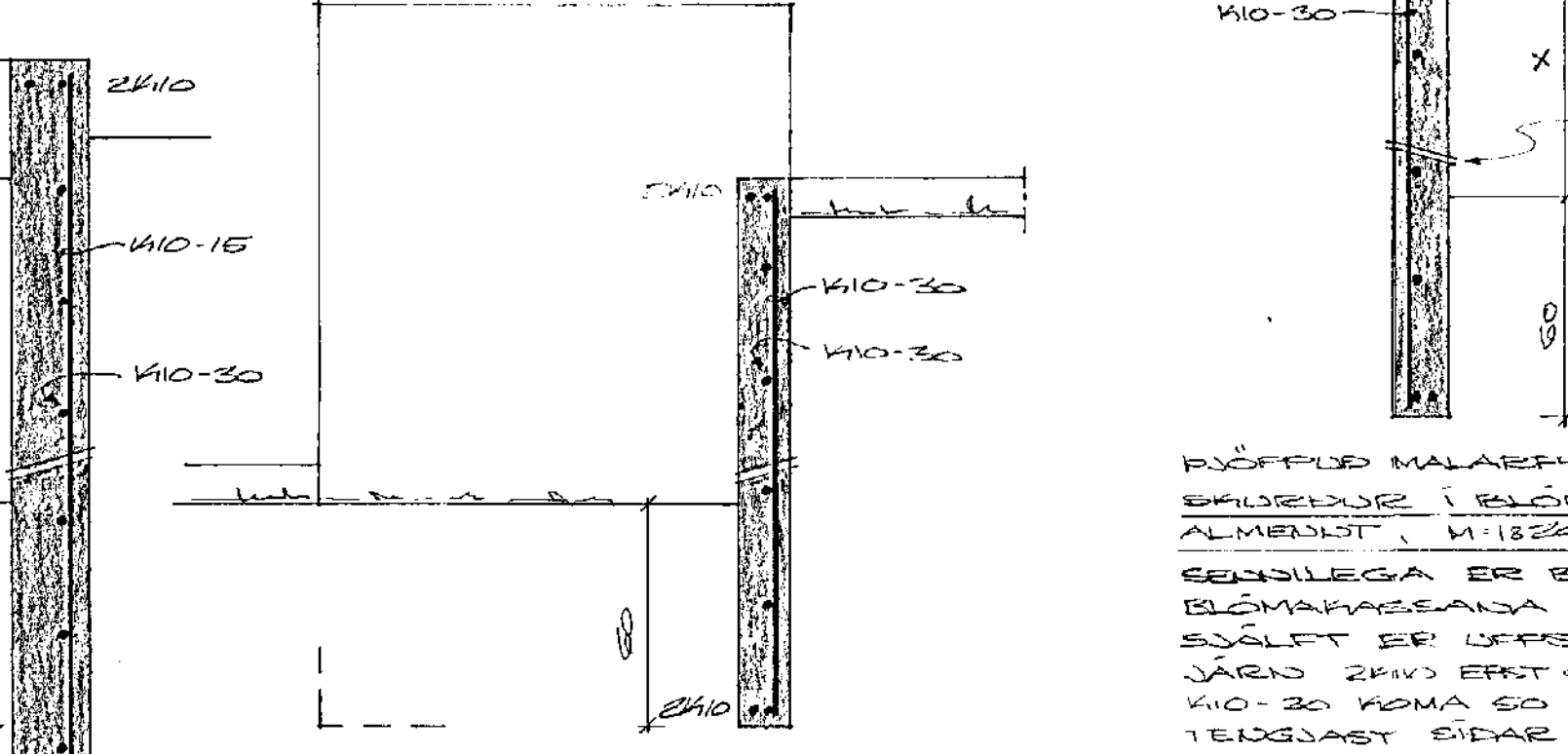
ÚTVEGGUNDIRSKURDUR ALMENN, M. 1120  
INNVEGGUNDIRSKURDUR ALMENN, M. 1120



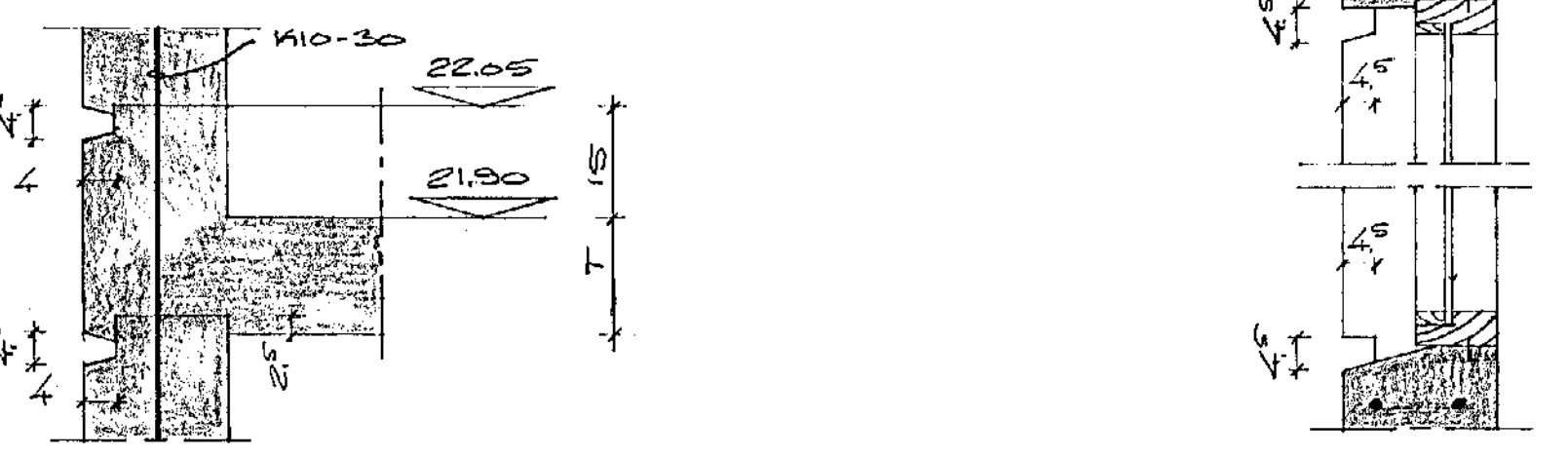
SKURDUR E, M. 1120  
SKURDUR F, M. 1120



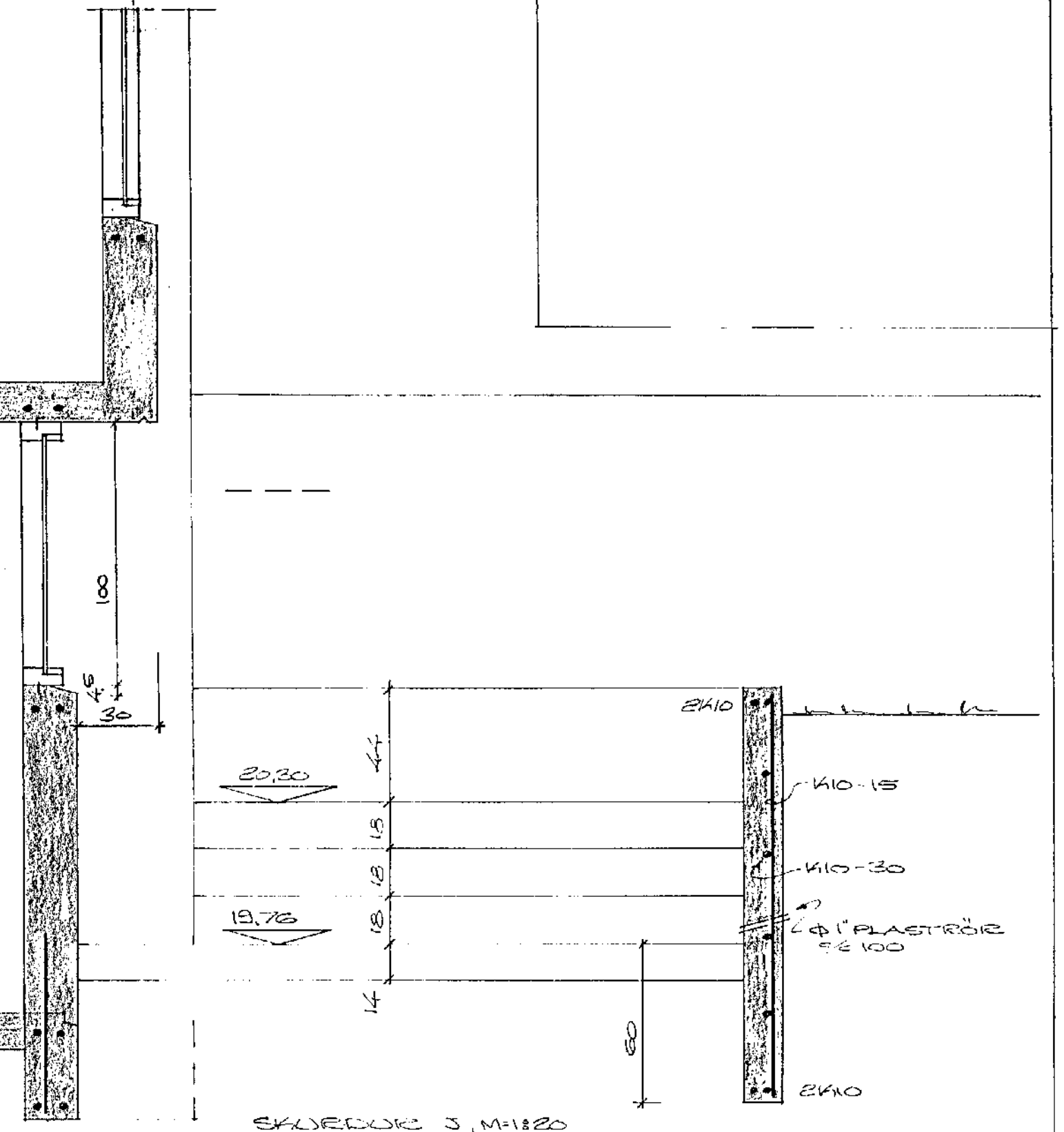
SKURDUR G, M. 1120  
SKURDUR H, M. 1120



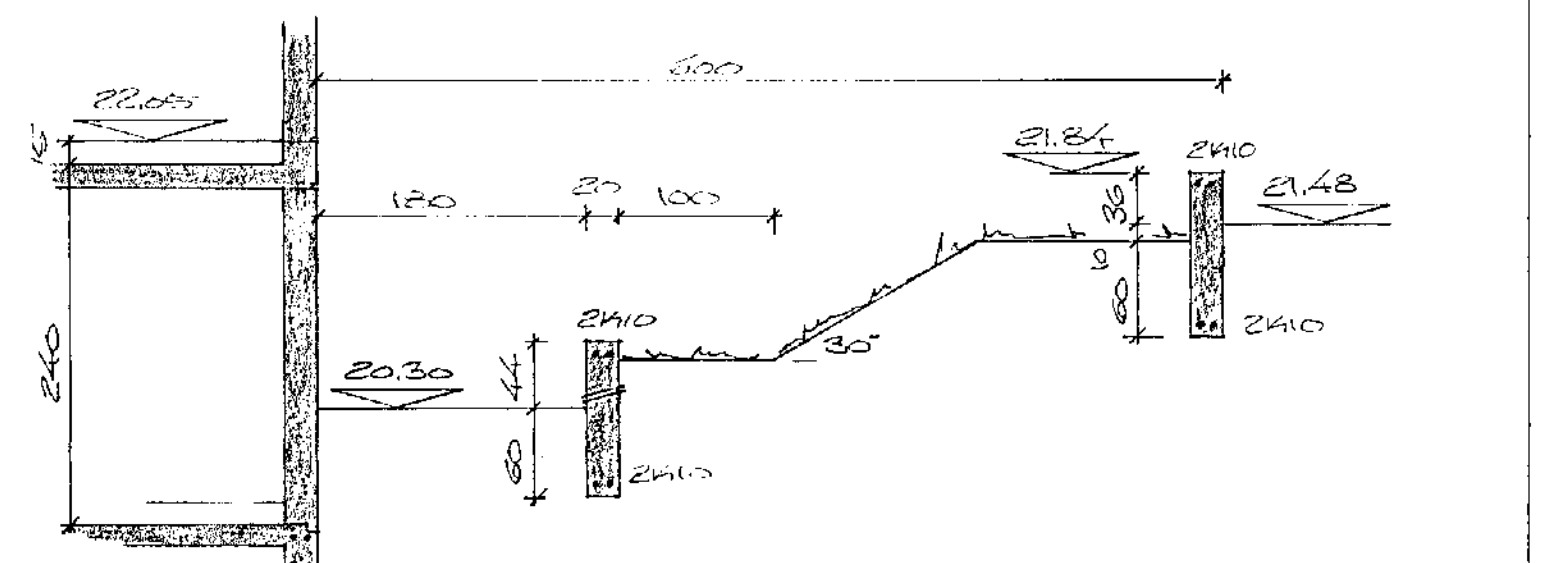
SKURDUR I, M. 1120  
(SKURDUR T + SKURDUR I SÆRILVENDT)



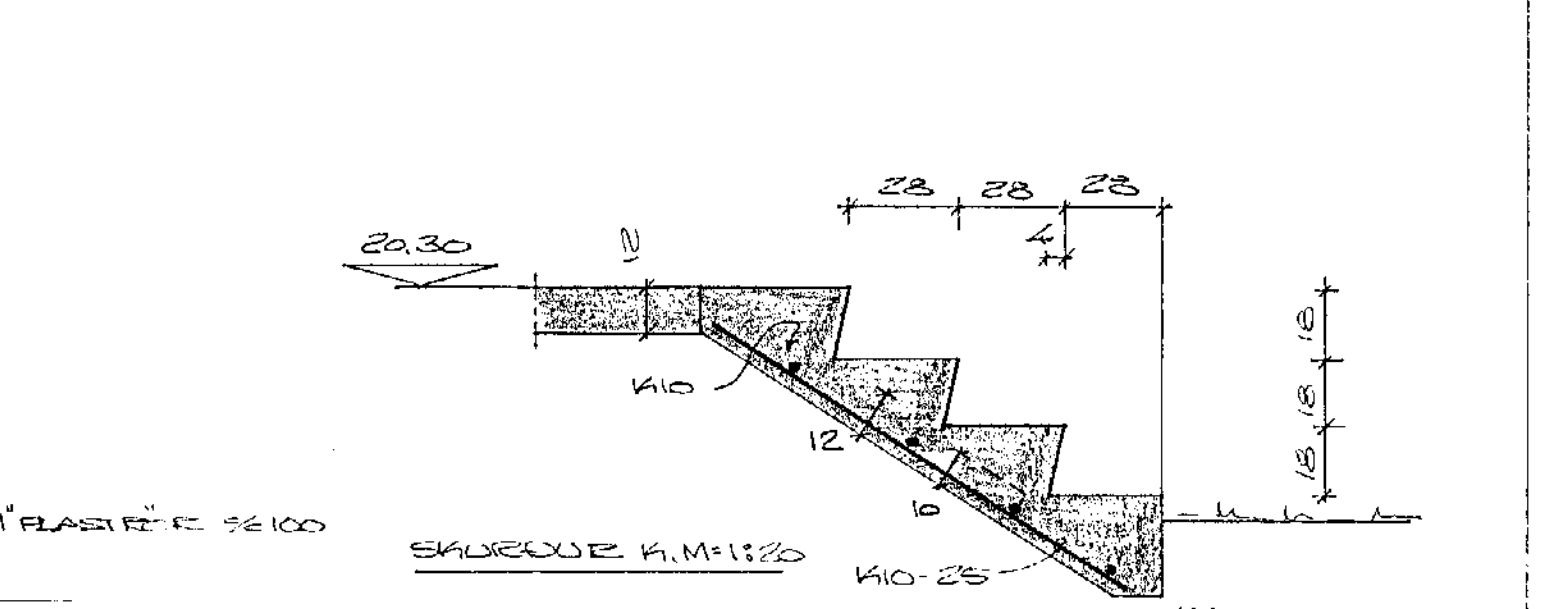
SKURDUR J, M. 1120  
(SKURDUR R + SKURDUR J SÆRILVENDT)



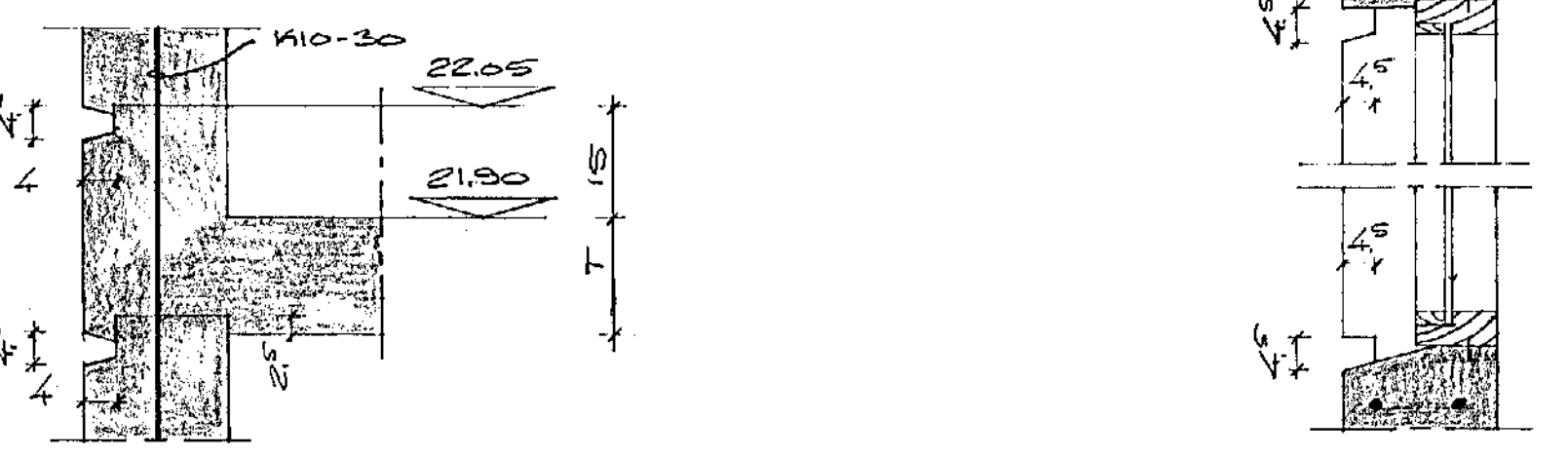
SKURDUR K, M. 1120



SKURDUR L, M. 1120



SKURDUR M, M. 1120



SKURDUR N, M. 1120  
(SKURDUR P + SKURDUR N SÆRILVENDT)

**SKÝPENDINGAR**

STEINSTEYRA: SÍGO Í FLÓTANZI FLÓTUM, UNDIRSTÖÐUM OG VEGGUM.  
 BENDISTÁL: K-VEGÓ KANGSTÁL  
 R = 577 SLETT STÁL

UNDIRSTÖÐUR SKULU ÞÁ MINNST 1,20M  
 ÞÍÐUR EFTIR JARÞVESS-ÞRÍÐUR, NEMA  
 ÞEY KLÖPP SÉ ÖFAR, EÐA TRÉTT SÉ  
 AÐ FÉÐÞRÝÐLA Í GELUNNI ÞAKI  
 EKKI UNDIRSTÖÐUM. ÞEY SKULU ALDRI  
 GANGA SKEMUR EY 30CM ÞÍÐUR EFTIR  
 BOTNÞÓTI, ÞEY SKULU STANNA Á  
 TANDSTOM JARÞVEGI.

FLÓTANZI FLÓTUR: ÞVÆRLAGA SKAL  
 ALLAR LAGSAR JARÞVESS MINNST 50 CM  
 UNDIR FLÓTU, ÞVÆRLAGA SKAL BOTNIS  
 VEL MEÐVELÞRÞR.

JARÞ Í EFTI OG NEÐRI BEYÐ SÁVALA  
 SKULU ÞEYÐ AMK. 50 CM ÞEYR  
 HÖÐ.

ÁLAG Á GELDU ER MEST 3KG/CM<sup>2</sup>  
 FLÓTURKAKKI ER 14CM

STEINSTEYRA Í STEA OG ÖRGAFALLA  
 SÉ 5200

*Arnar Magnússon, ERFI*