

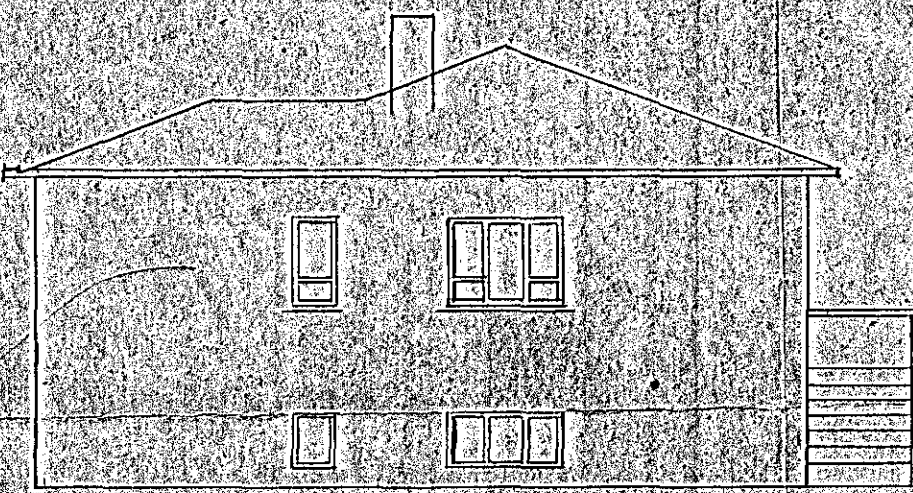
Hús Einarssonar við Holtsgötu 12

M = 1:100

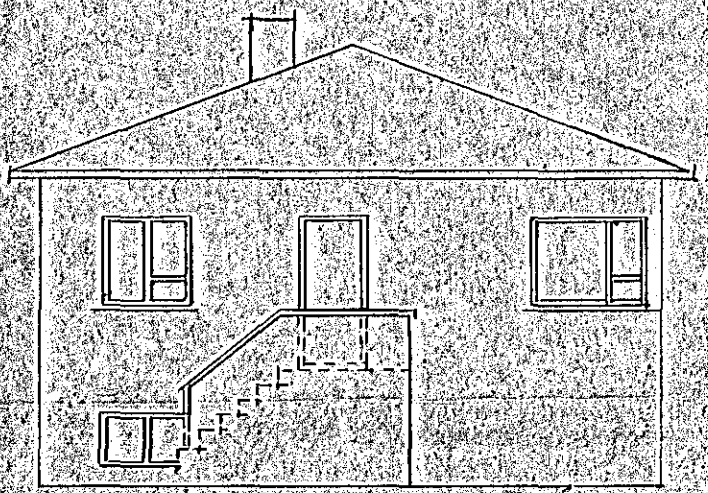
Jambykkt á fundi bygginga-
nefndar þ. 27/4 1945
BYGGINGAFULLTRUINN
I HAFNARFIRÐI
EIRIKUR PALSSON
(Skr.)



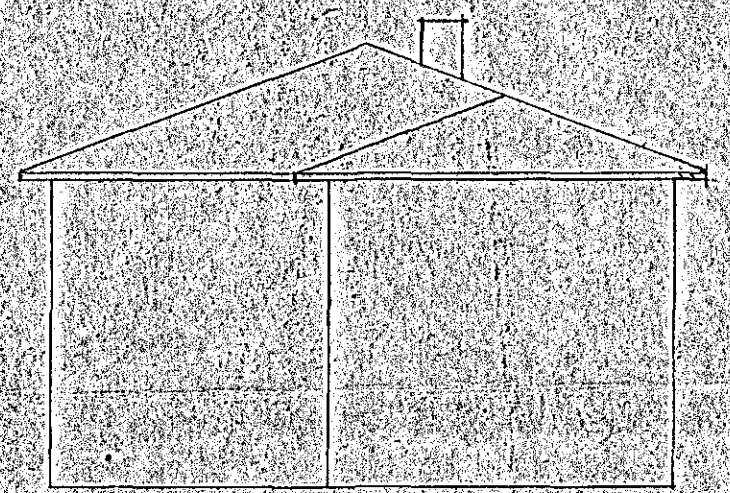
Suður



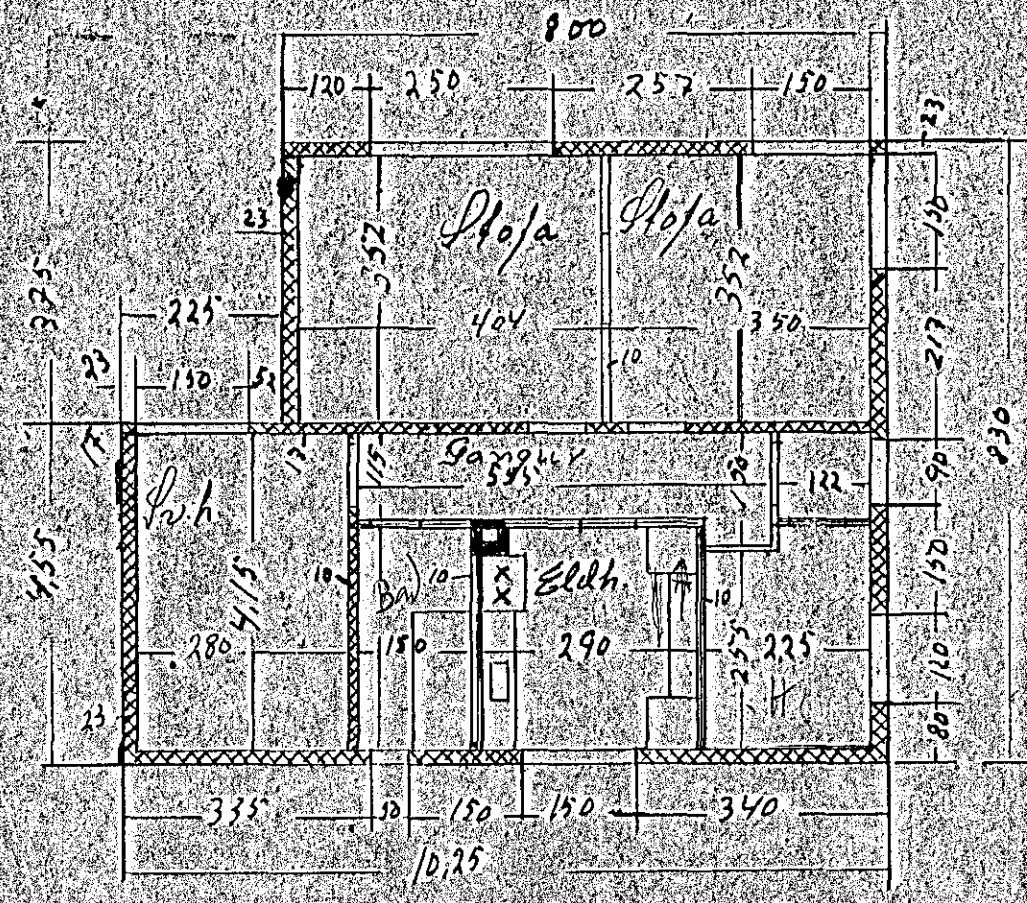
Norður



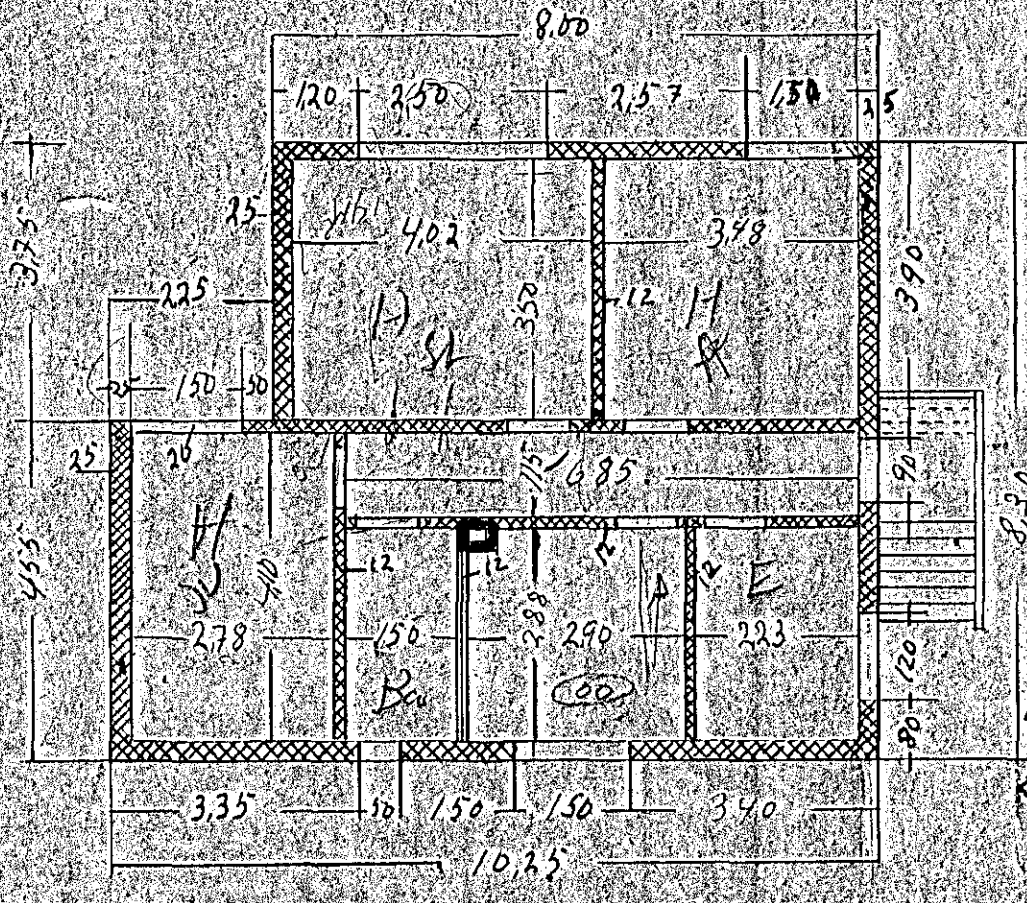
Vestur



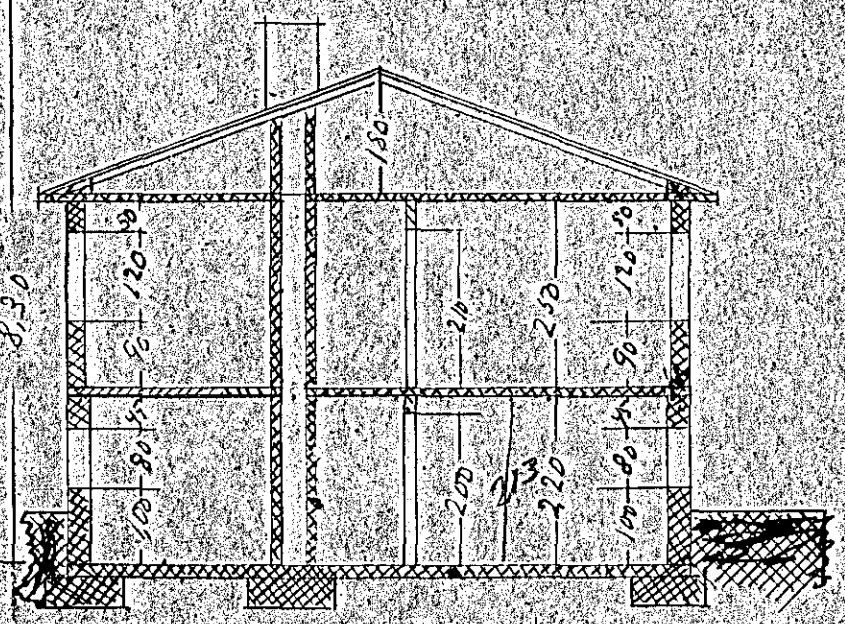
Austur



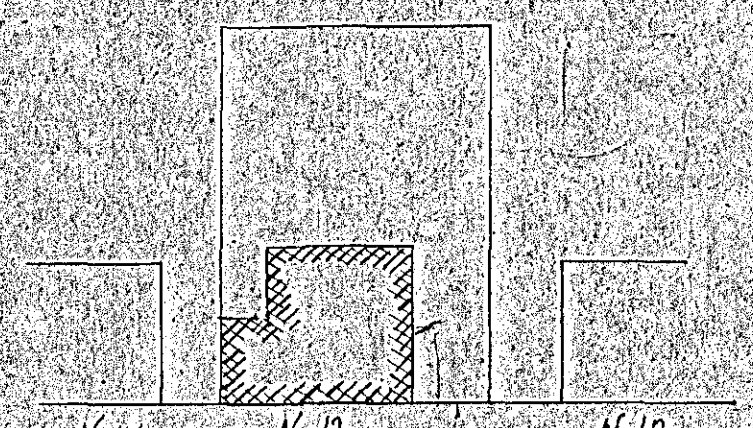
hafi



76.6m² DmH



4pursk



N.14 N.12 N.10
Afskiðum M = 1:100

Hafnarfirdi April 1945
Einar Sigurdsson