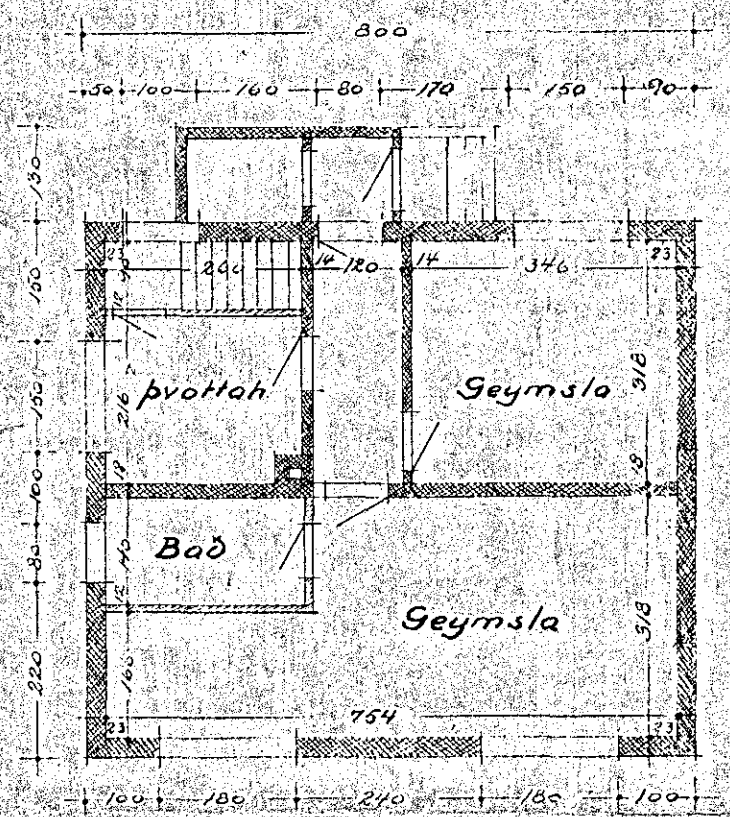
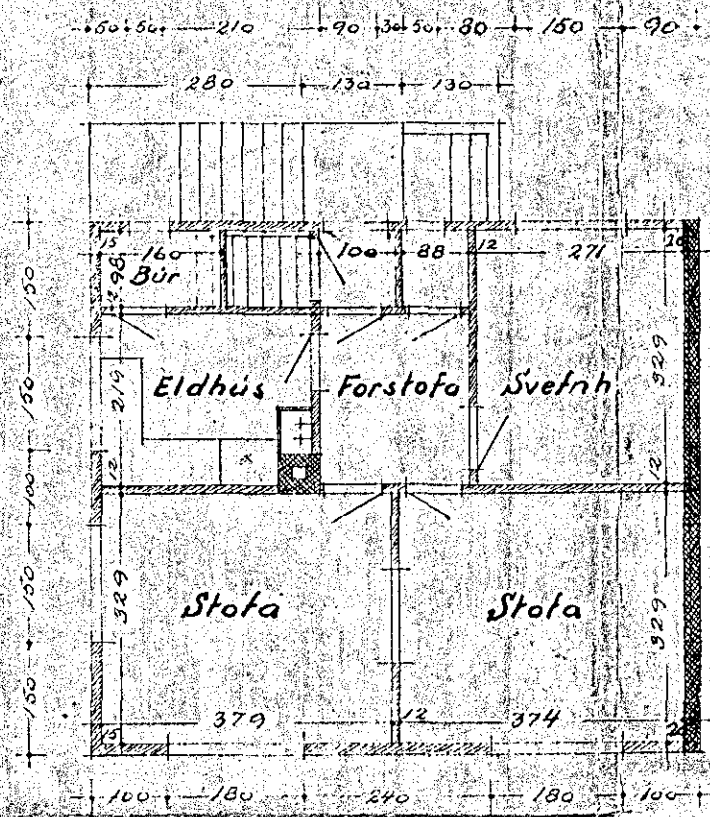


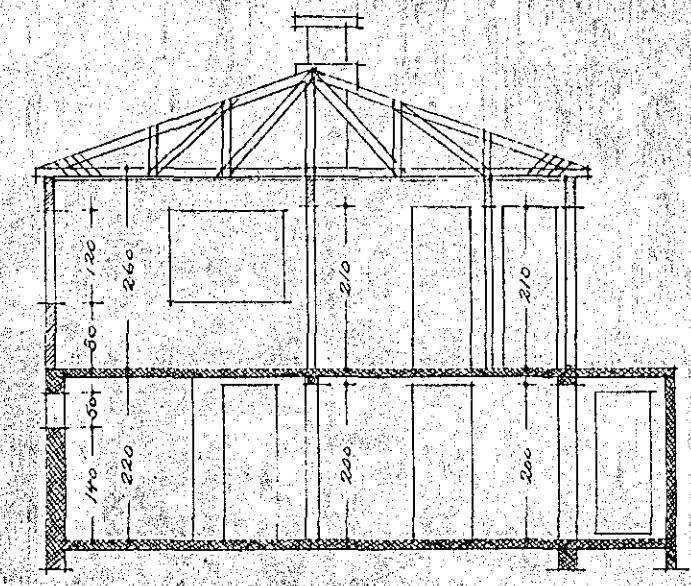
Ólafur Hallgrímsson
 Hús nr. 13 við Holtsgötu í Hafnarfirði.
 M. 1:100



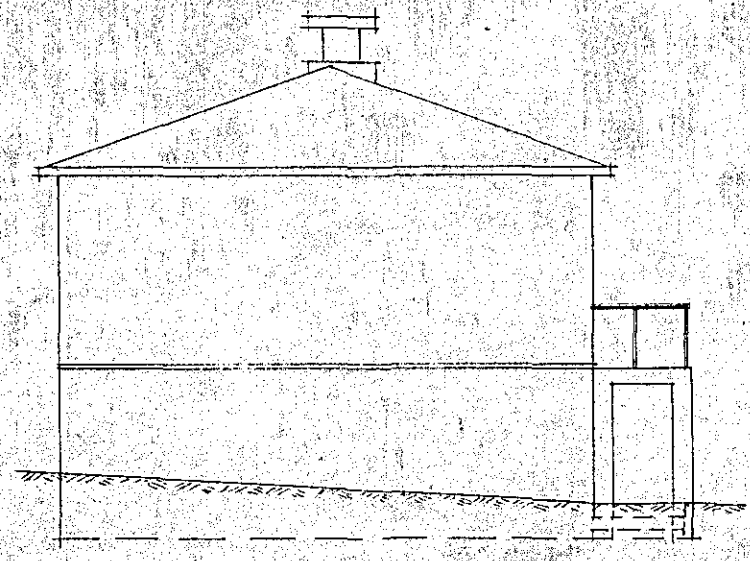
Kjallari



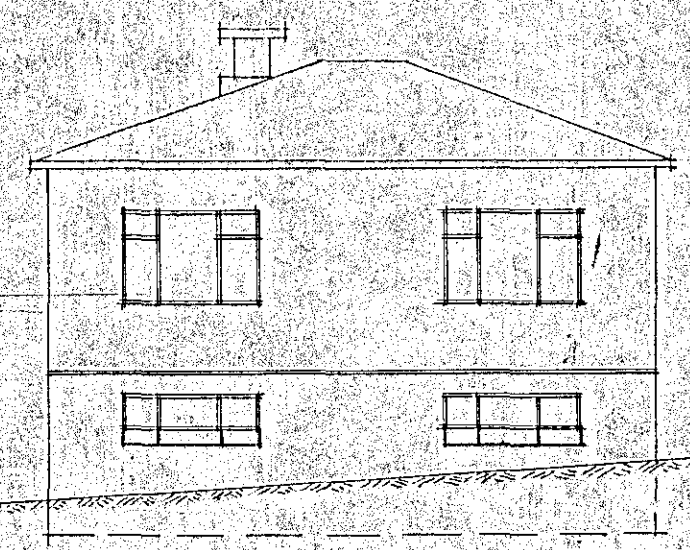
1. hæð



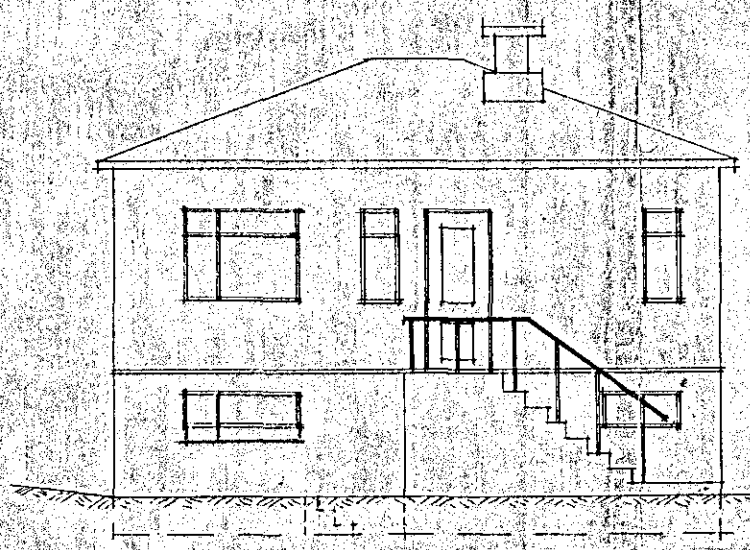
Skurður



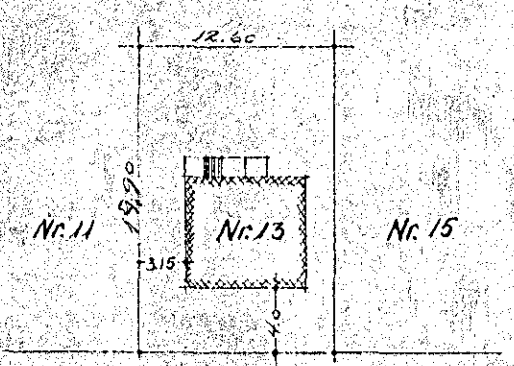
Austurgafi.



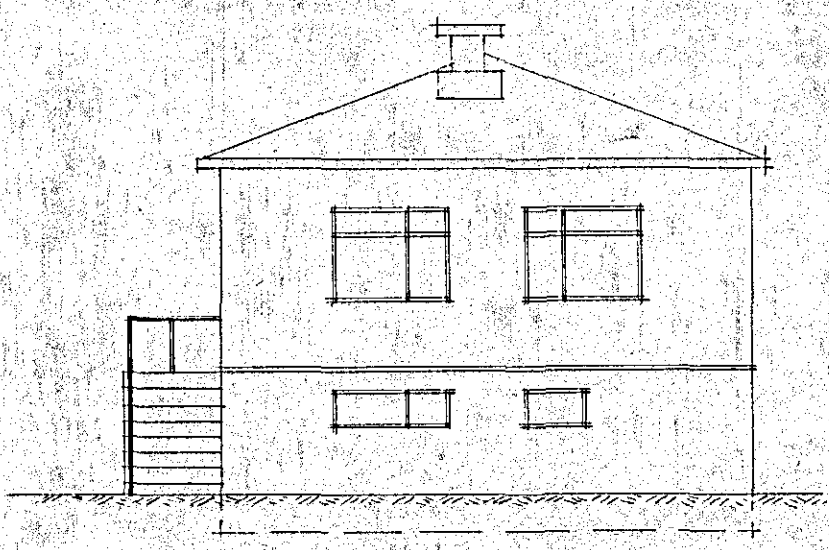
Sötuhlíð (suður).



Norðurhlíð



Holtsgata
 Afstöðumynd M. 1:500.



Vesturgafi.

Reykjavík í apríl 1945

Höfundur
 Ólafur Hallgrímsson