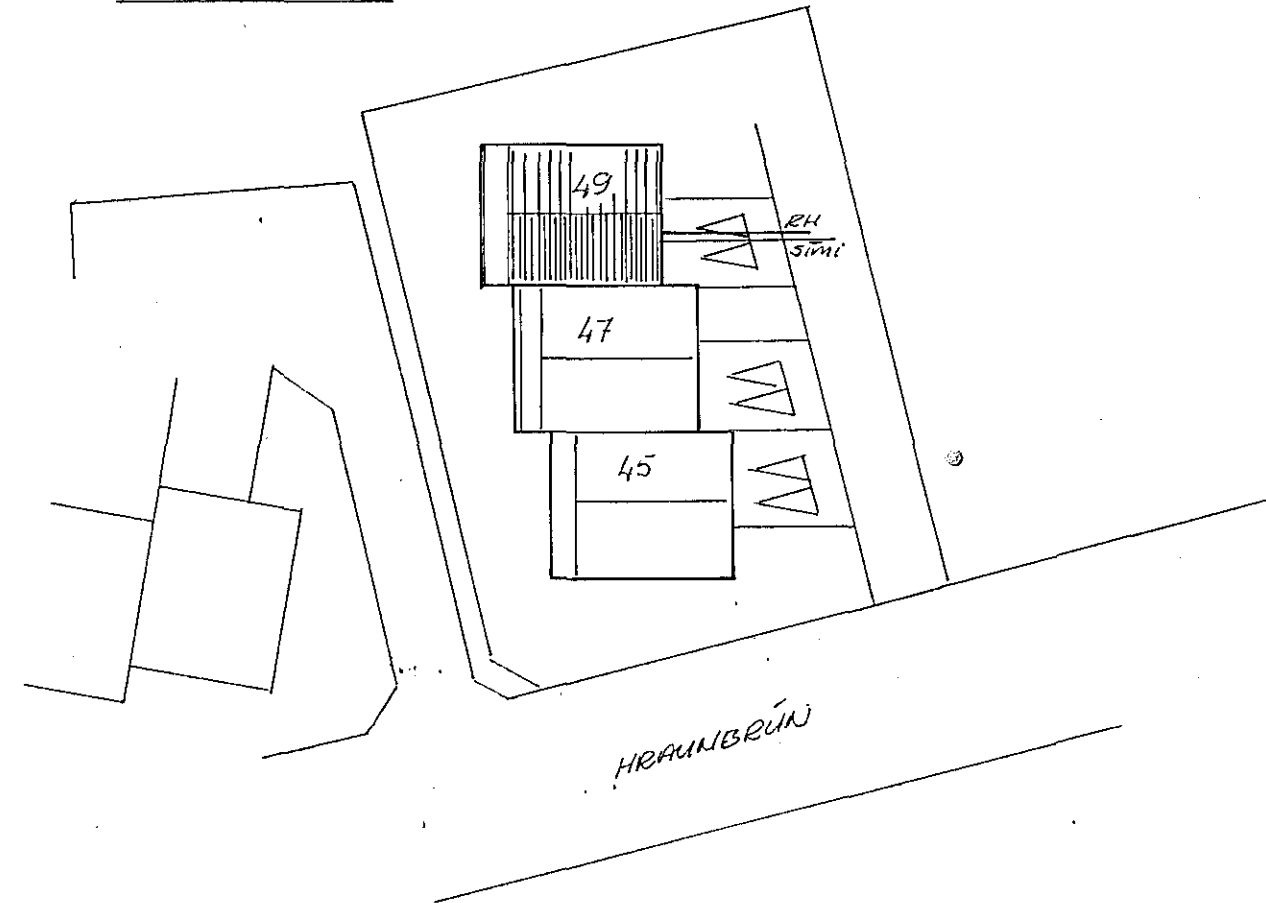


AFSTÖÐUMYND:



EINLÍNUMYNDIR:

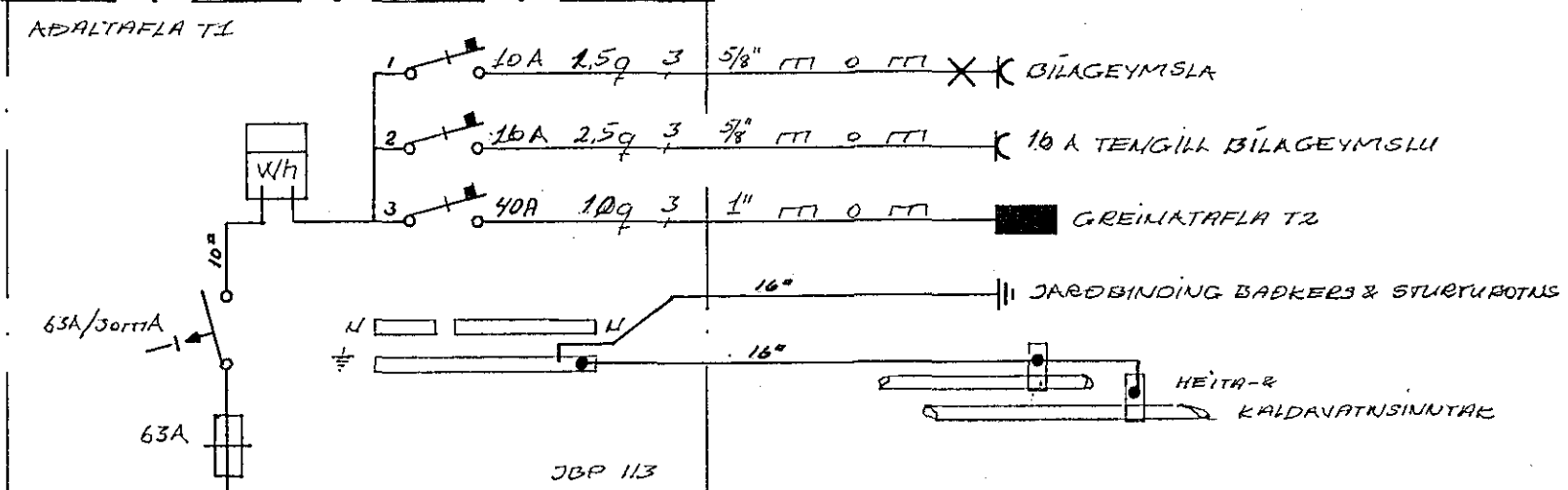
GREINATAFLA T2.

1	10A	1,5g	3	5/8"	0	0	0	0	ANDPYR, HERB, VS. HÖL
2	10A	1,5g	3	5/8"	0	0	0	0	SETUSTOFA, AÐINNHERB.
3	10A	1,5g	3	5/8"	0	0	0	0	ELDHÚS, BORDSTOFA
4	10A	1,5g	3	5/8"	0	0	0	0	FJÖLSÉYLDUHERB, HERB., BAÐ, STÍGI
5	10A	1,5g	3	5/8"	0	0	0	0	BARN, GEVMSLA, HÖÐN, PUOTTUE
6	16A	1,5g	3	5/8"	0	0	0	0	PUOTTAUËL
7	16A	1,5g	3	5/8"	0	0	0	0	KUREARI
8	16A	1,5g	3	5/8"	0	0	0	0	TENGILL ELDHÚSI
9	25A	4,0g	3	3/4"	0	0	0	0	ELDAUËL

JBP 112/6

FRÁ AÐALTOFLU TL

AÐALTAFLA TL



2 RAFAFL svf. s:53522 og 28022		
Teknað af: Gísli ARNARI	HRAUNBRÚN 49	Mkv. 1:50 Dags. 29/977
RAFLÖGN 2.HÆÐ AFSTÖUMYND EINLÍNUMYND		Samp. Jp6 bl 2 af 2