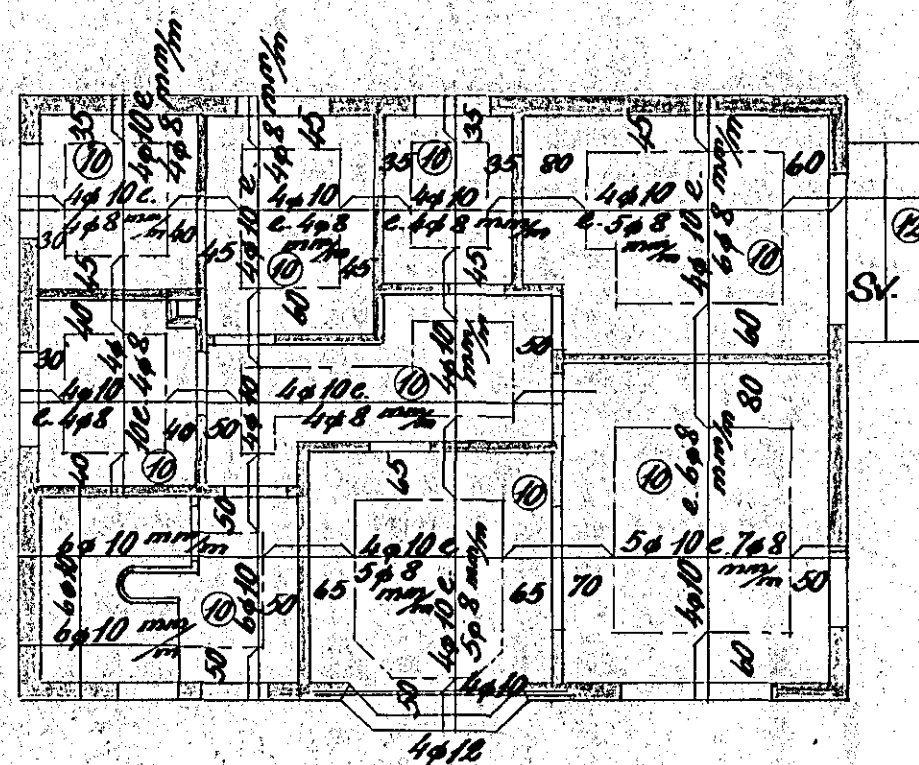
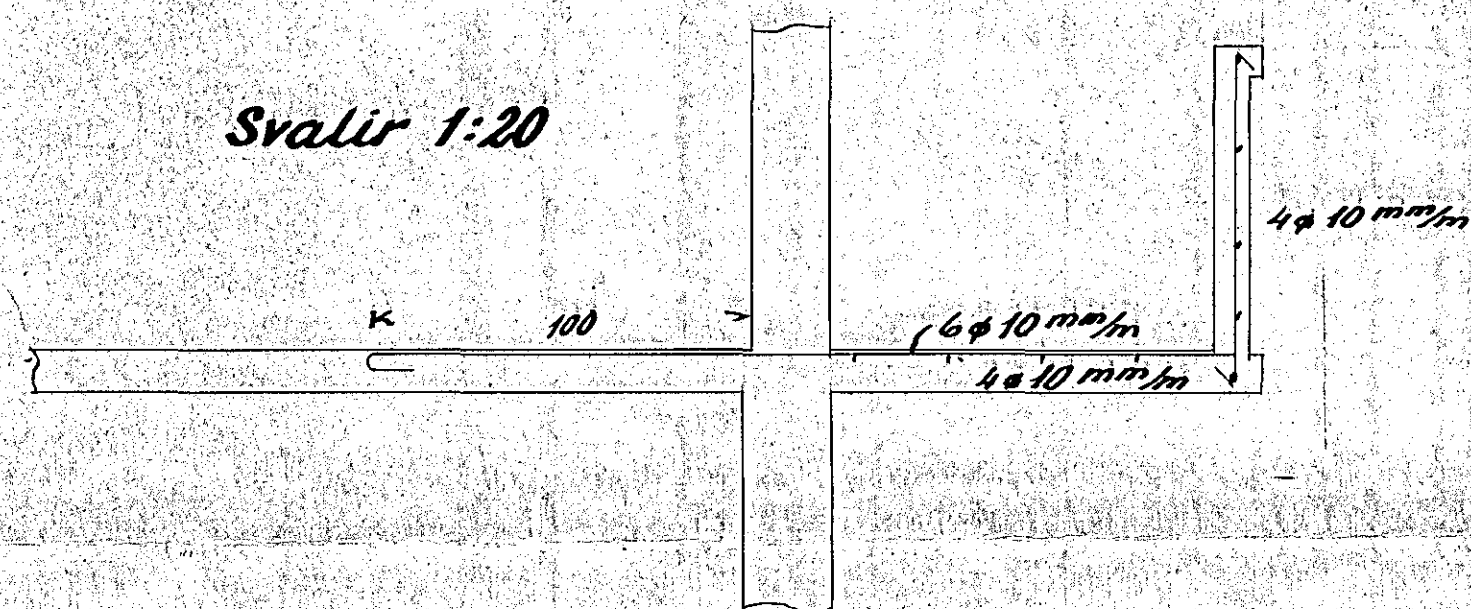


Blöndun steypu 1:2:3

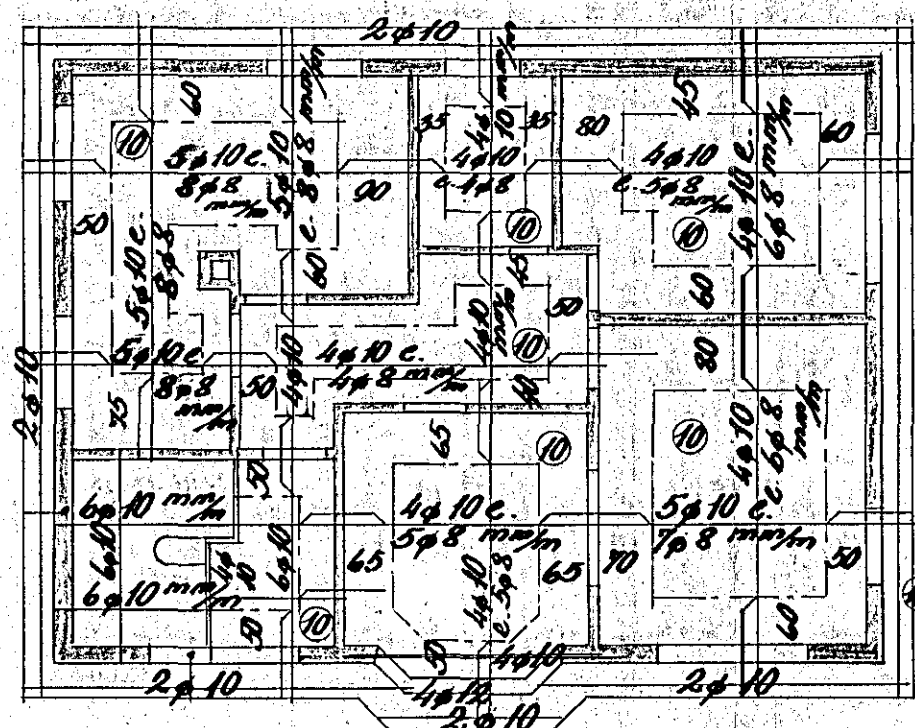
Yfir dyr og glugga korni 2 ϕ 10, nema haf

≥ 2.00 m, þar korni 4 ϕ 10

Svalir 1:20



Loft yfir kjallara 1:100



Loft yfir hæð 1:100

Hasnarf. í júlí 1954

Sig. J. Ólafsson