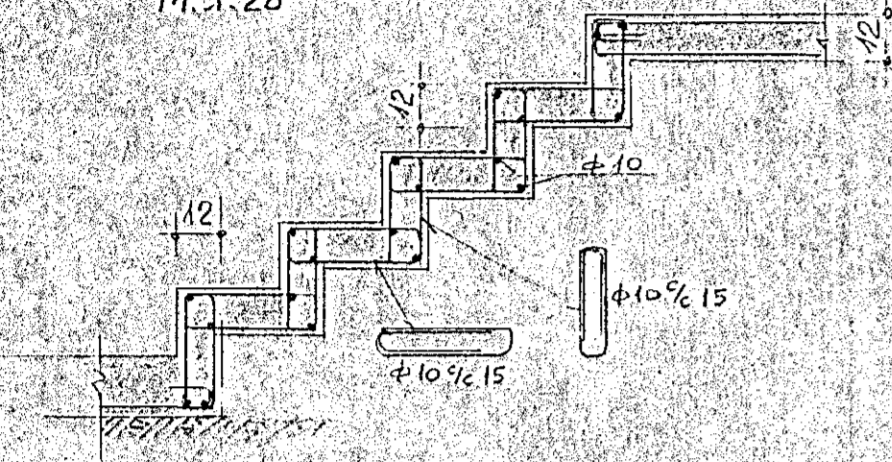
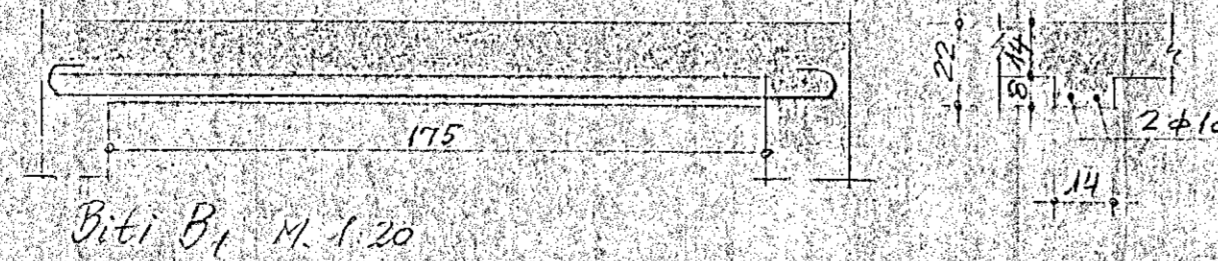
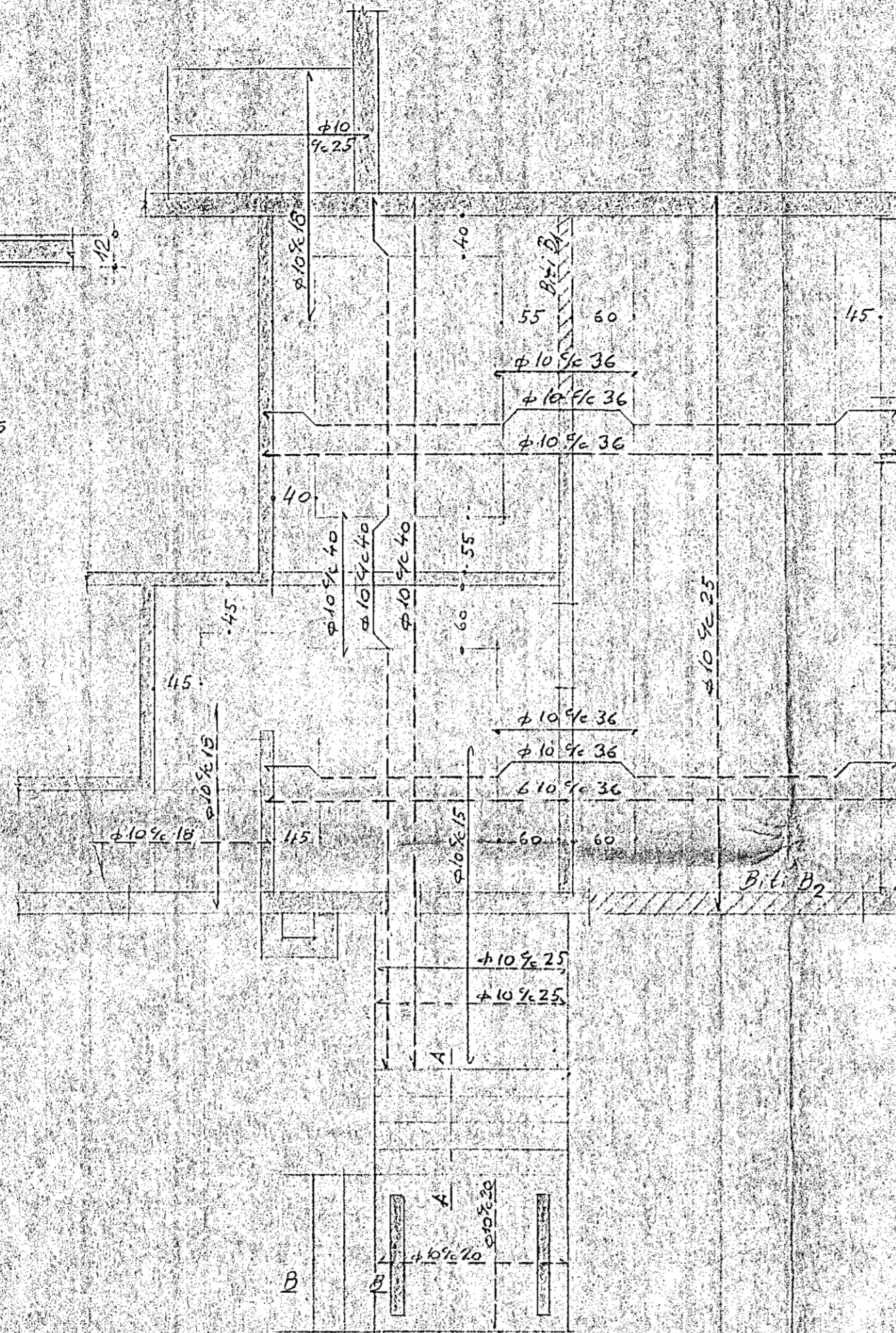


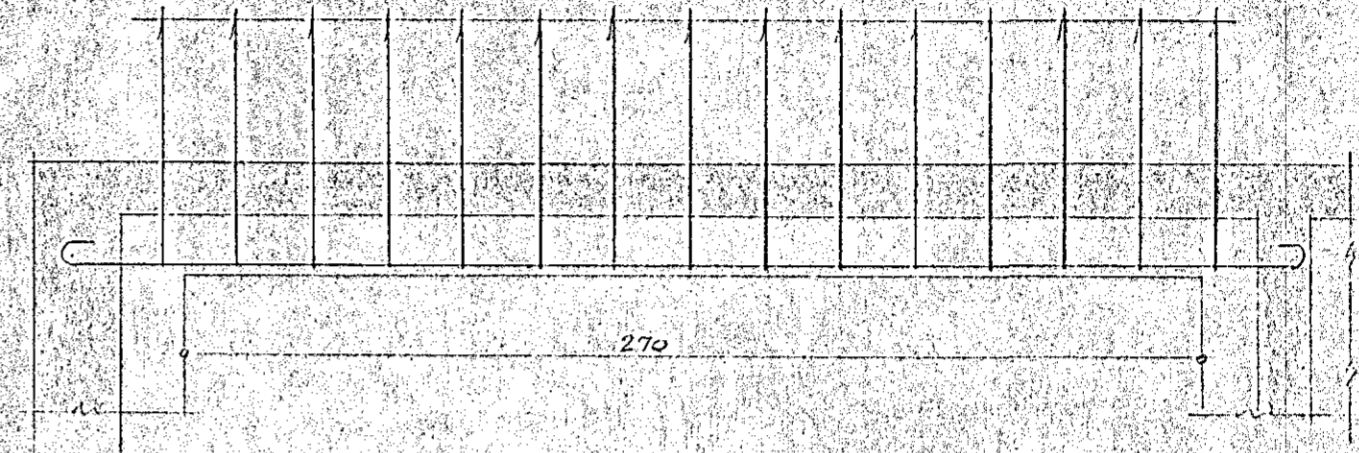
Snid A-A  
M. 1:20



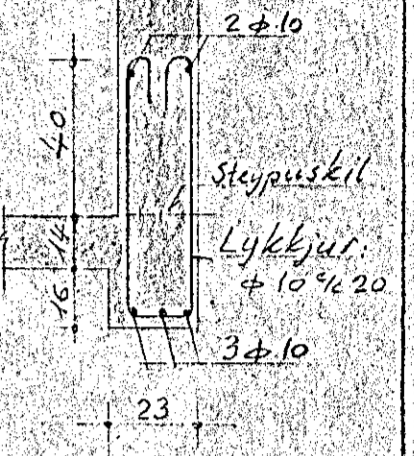
Snid B-B  
Samskonar jarnalögn  
og í snid A-A



Biti B2 M. 1:20



Snid i B2  
M. 1:20



Skýringar

1. Bláindun járnbenntar stöpu sé 1:3:3 eða sementsmagn 300 kg í m<sup>3</sup>
2. Yfir dyra- og gluggaop skal setja 3φ10
3. Skaytilengd járna 40 em
4. φ10 36 merkir 10 mm járn með 36 cm bili frá miðju á miðju.
5. Annadhvert járn er uppbyggð þar sem sýnt er.
6. Allar plötuþykktir 14 em. Stigabök og pallar 12 em.

Hringbraut nr. 59  
Hafnarfirði  
Loff yfir kjallara - jarnalögn

PÁLL FLYGENRING  
Veikfræðingur

M. 1:50  
1:20

Dagur  
15-7-59

Reikn.

Teikn.

Ath.

PF

Nr. 70.02