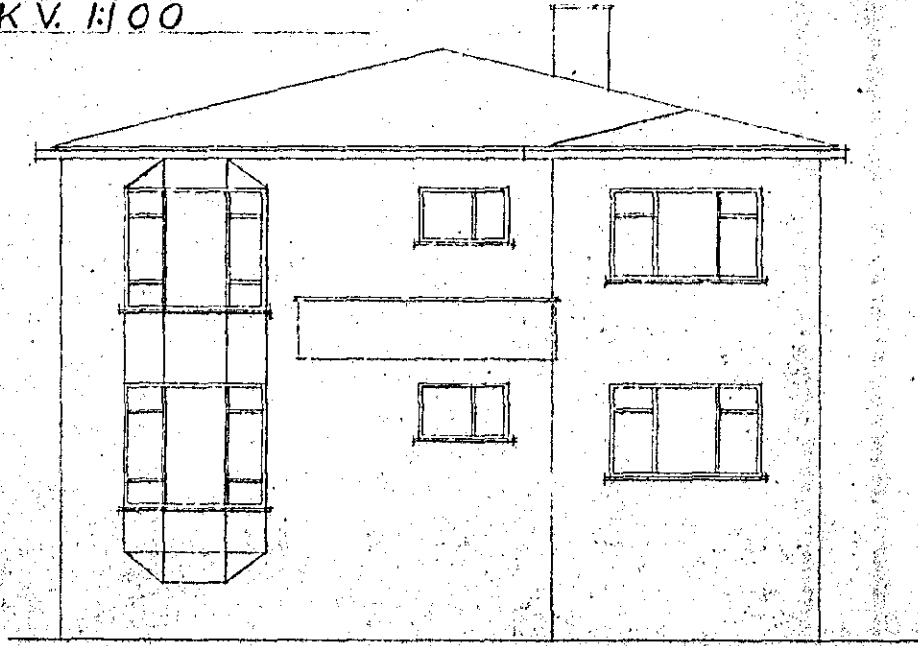
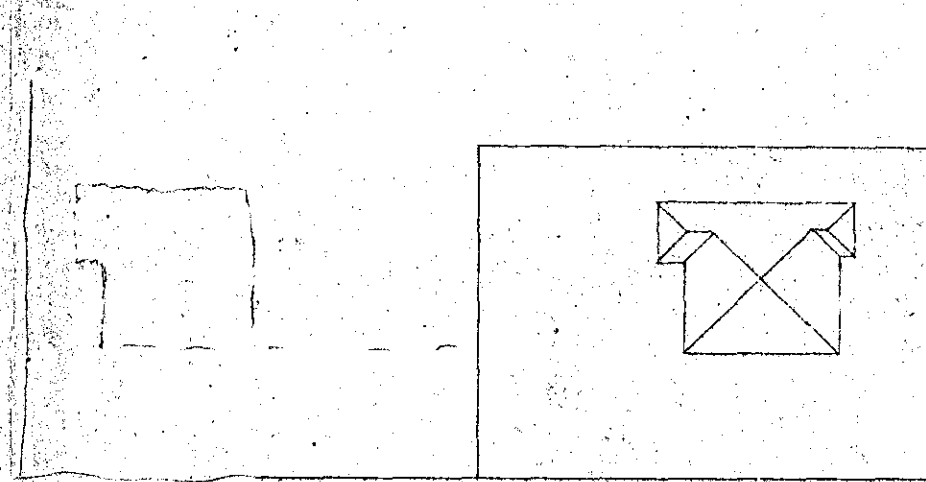


S PÁLMA AGÜSSONAR VÍÐ HRINGBRAUT NO. 69
 ELÍKV. 1:100

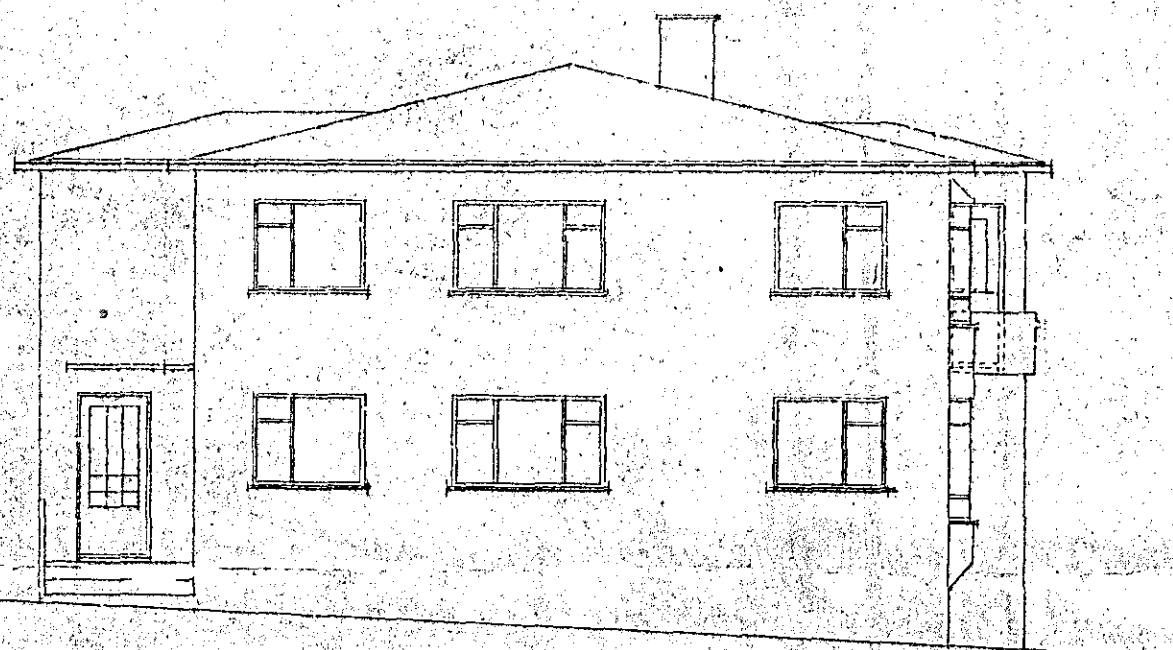


SÚÐURHLÍÐ

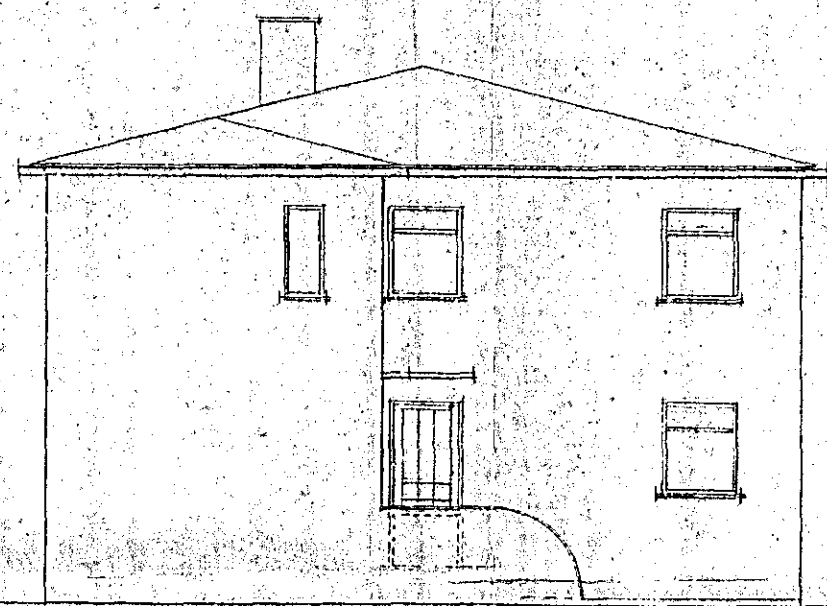


HRINGBRAUT

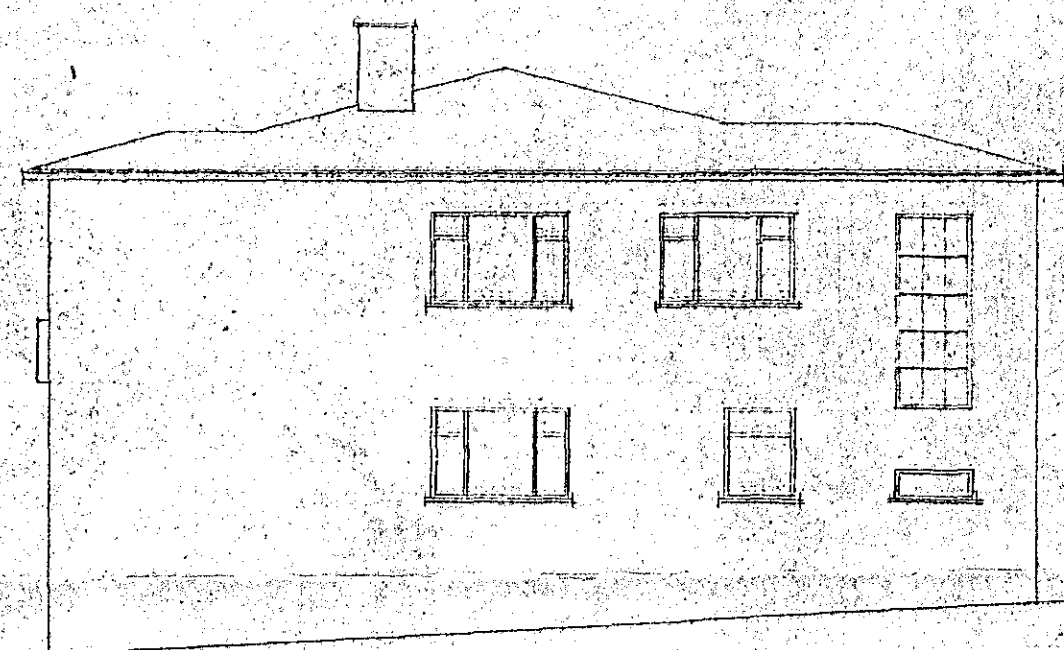
AFSTÖÐUMIND 1:500
 HÚSÍÐ 112.30 m²



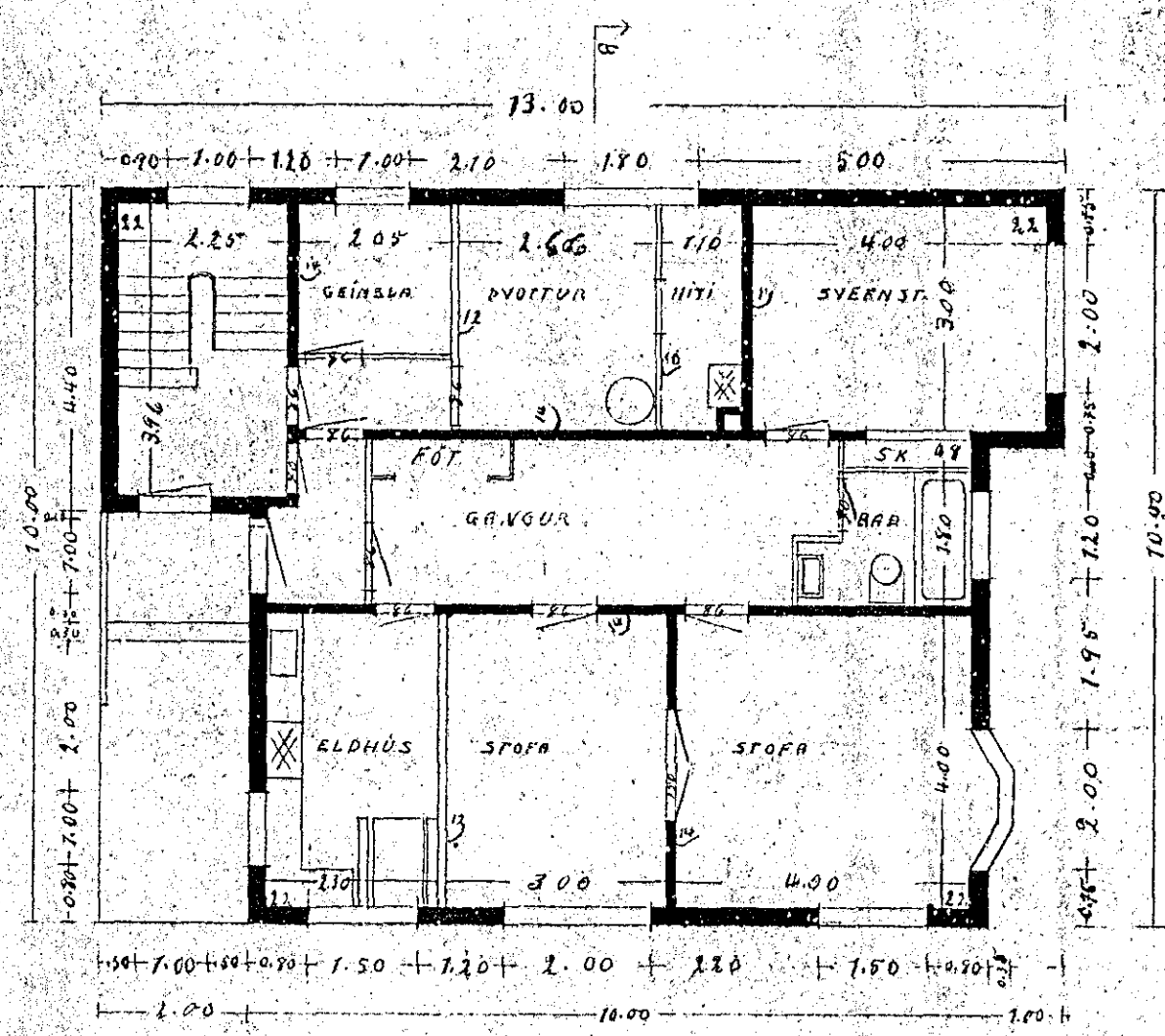
VESTURHLÍÐ



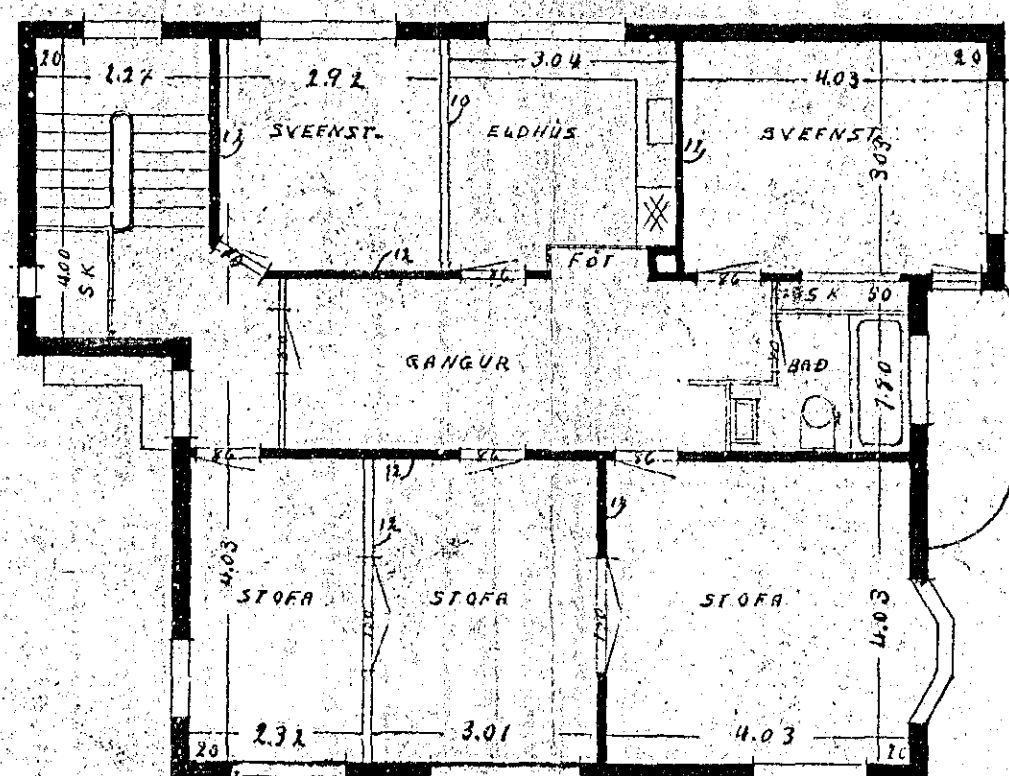
NÖRÐURHLÍÐ



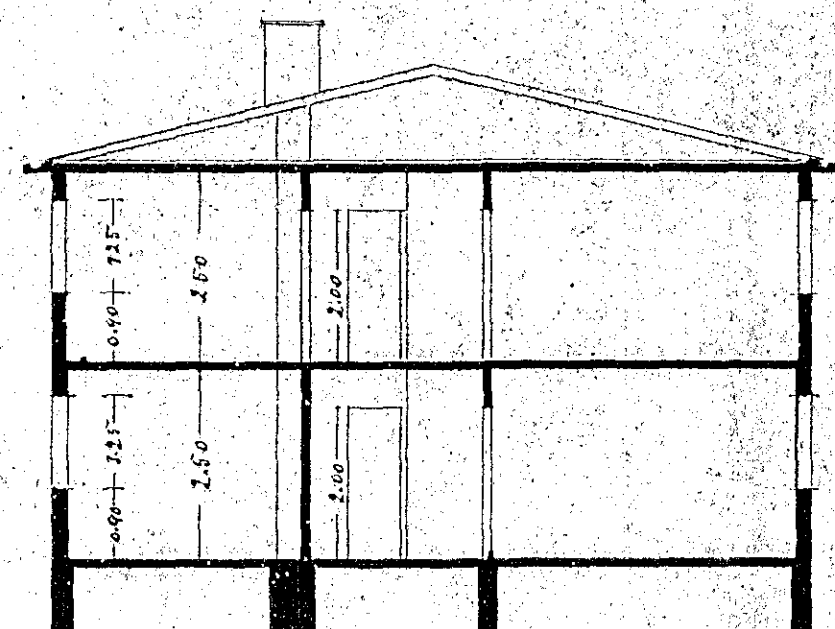
AUSTURHLÍÐ



I HÆÐ



II HÆÐ



SKURÐUR A-B

Reykjavík í Júní 1948
 Hannes Þ. Þorláksson