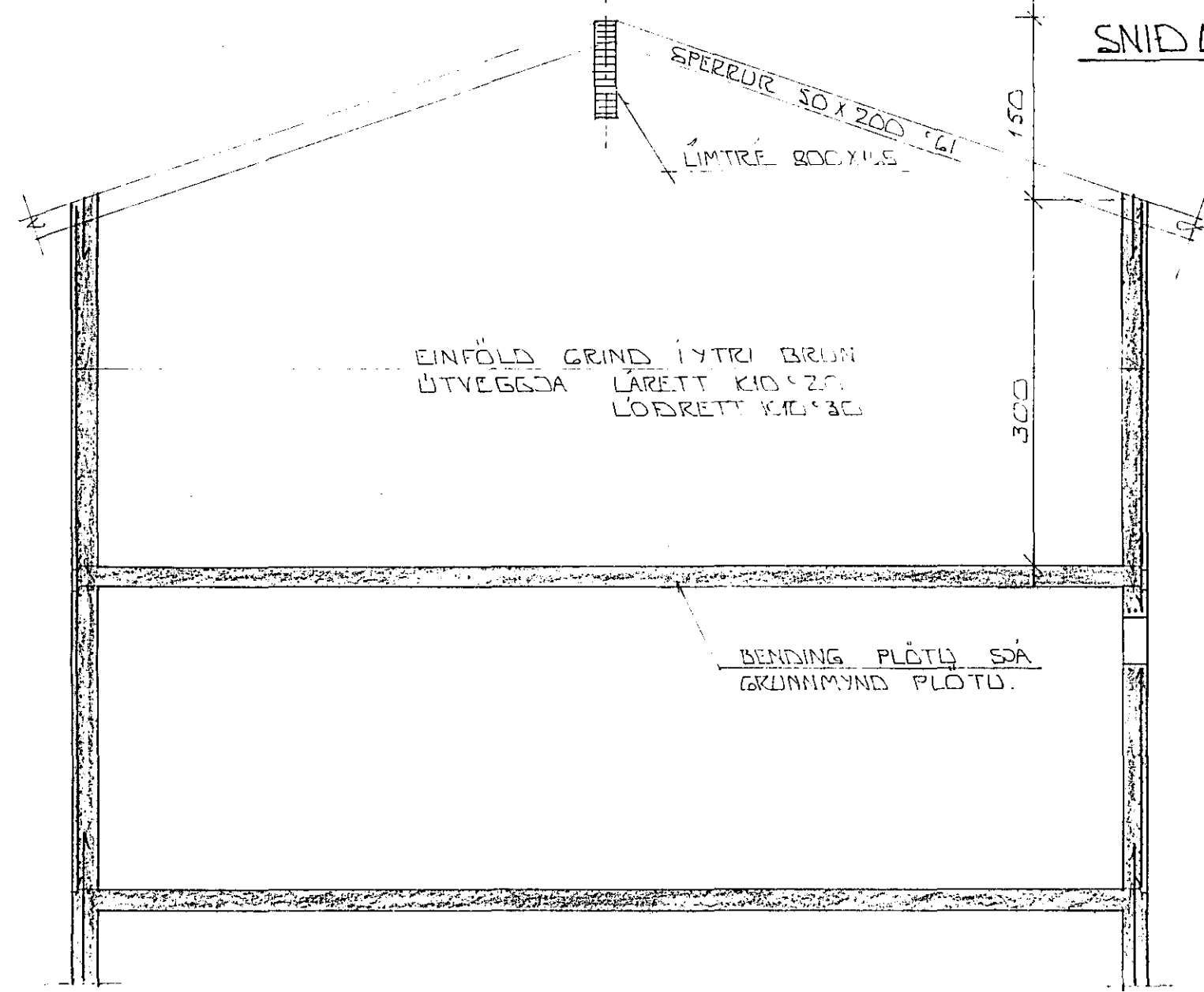
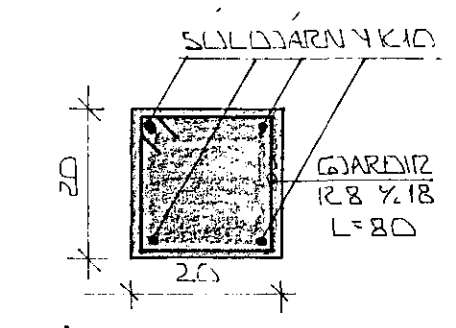


ENDA Á LIMTRÉ Í STEYPU SKAL FÓÐAÐA MEÐ 2 UMFERÐUM AF VIÐURKENNDU FÓAÐARNAREFNI. ENDA Í STEYPU SKAL KLÉÐA MEÐ 3 MM OLIUSÓBNU TRÉTÆXI. Í GEGNUM BITAENDA KOMI TEJNAR/BOLTAR ÚR 20 MM STÁLI L=550MM S 5TK. GÖT GEGNUM BITAN SKULU BÖRUEÐ NÁ KVEMLIGA FYKJE BOLTANA.

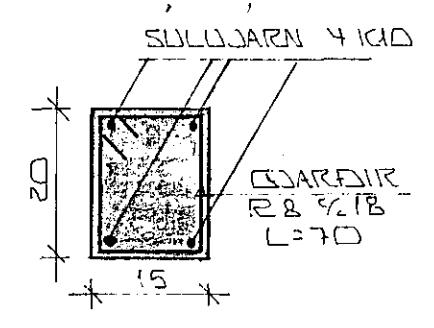
VIÐ BITAENDA KOMI 1GM HARDPRESSUÐ STEINULLAZ-EINANANGRÖUN SPERUPRESSI K10 L=120



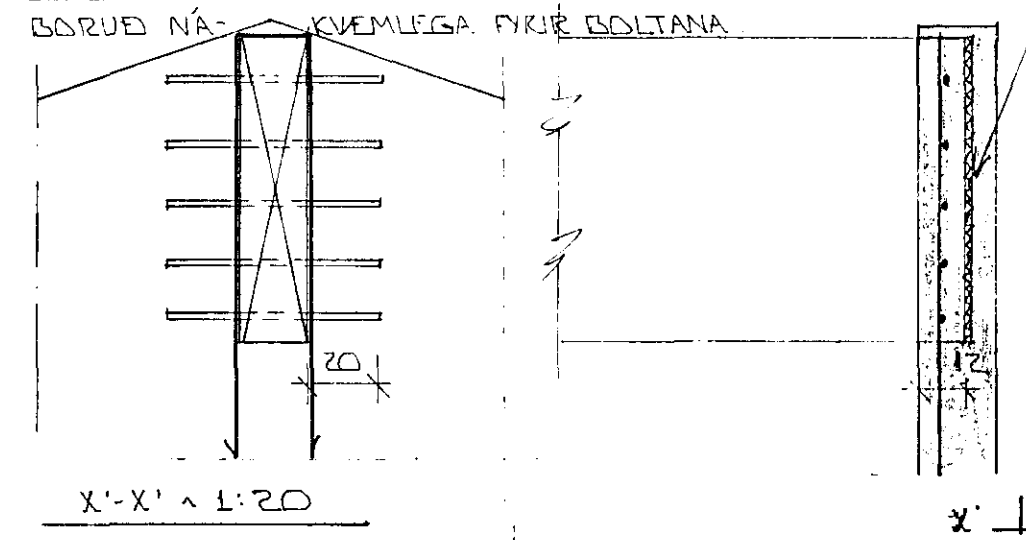
SNID 1-1 ~ 1:50



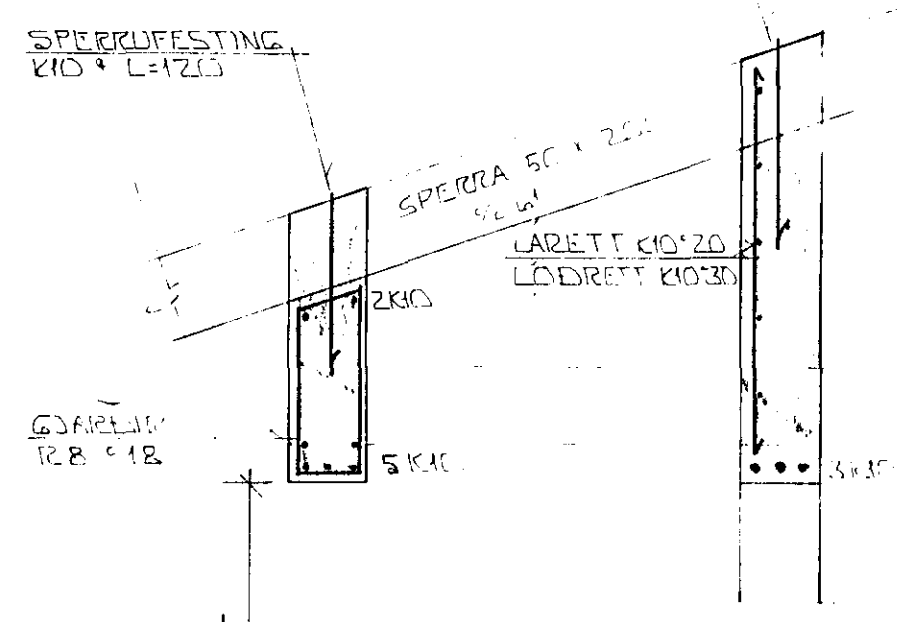
SÚLA S2.1 ~ 1:10



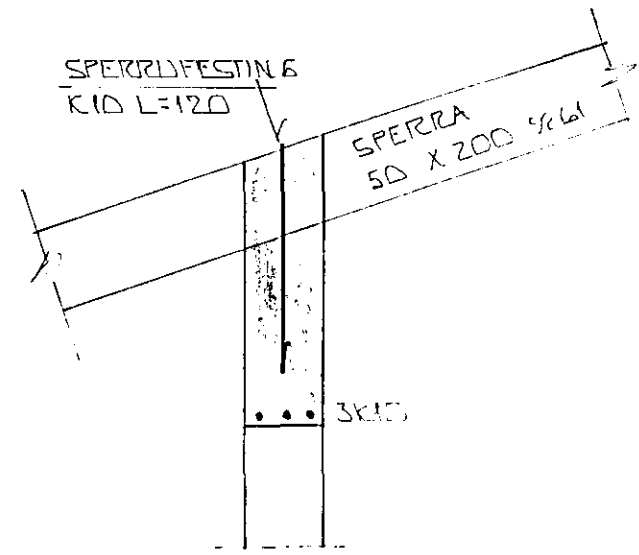
SÚLA S2.2 ~ 1:10



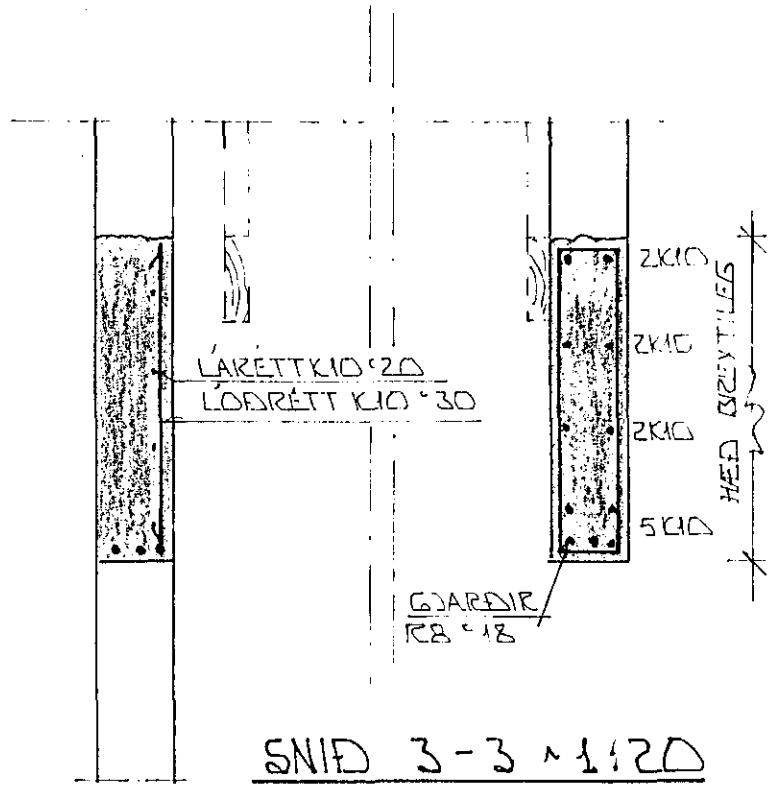
SNID 6 ~ 1:20



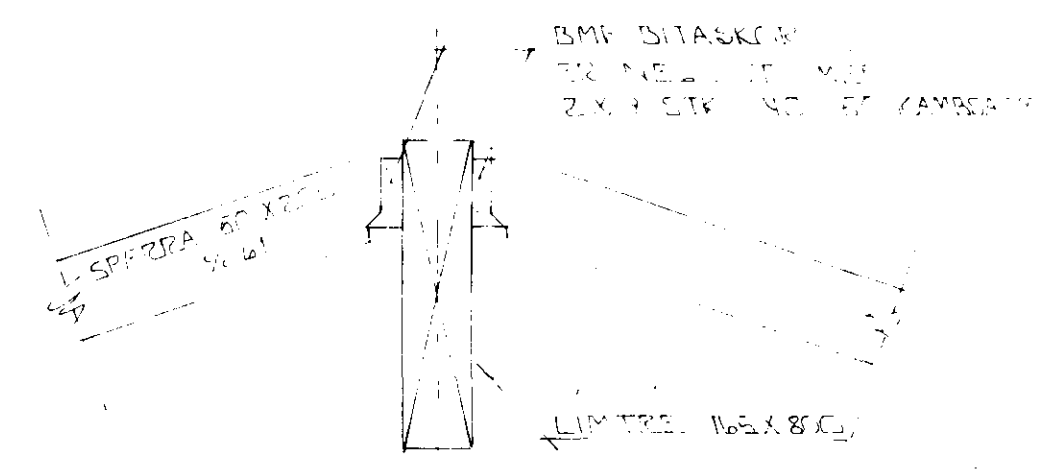
SNID 2-2 ~ 1:20



SNID 4 ~ 1:20



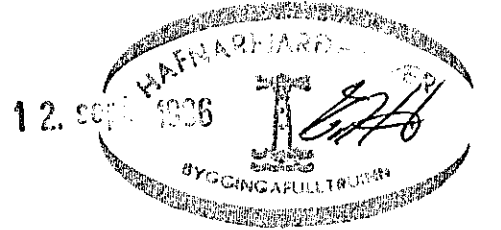
SNID 3-3 ~ 1:20



SNID 5 ~ 1:20

SKÝRINGAR:

SNID MERKT 1-6 OG SÚLUR MERKT S1 OG 2. SÁ GRUNNMÝND ÞAKVIRKIS BL. NR. 1-06 ALMENNAR SKÝRINGAR BÓATS LN. 1-01.



BR. NR.	DAGS	EDLI BREVTINGAR	SIGN.
			DAGS ÁGÓST '82
KLETTAGATA 14 HAFNARFIRÐI			HANNAÐ
ÞAKVIRKI - SNID OG SÆRMÝNDIR.			TEIKNAD
			VERK NR. 8447
MÆLIKV. ~ 1:50 ~ 1:20			BLAD NR.
SIGURÐUR ÞORLEIFSSON TEKNIFRÆÐINGUR F.T.F.I.			1-07
STRANDGÖTU 11 HAFNARFIRÐI SÍMI 54751			