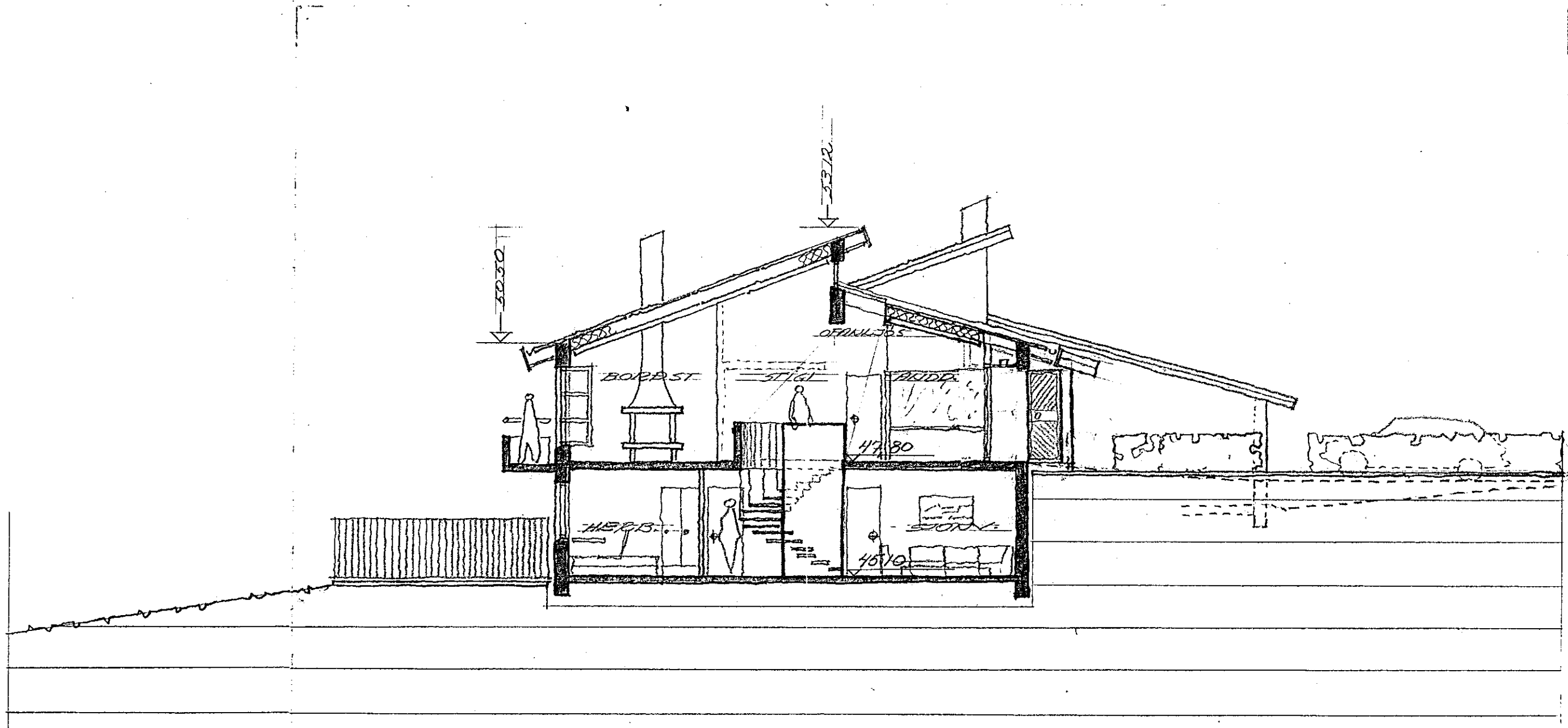


14/12 '89 Fulla J.



| | | |
|--------------|---------------|-------------|
| KLIKKUBERG | 8-10 | FYRIRSPURIN |
| BVERSNIR | 1 HUS KIR. 10 | MAL. 1:100 |
| TUGI GUNNAR | BORRARSON | D. 100 '89 |
| ESTABAKKA 18 | RÍSK. | S. 73323 |