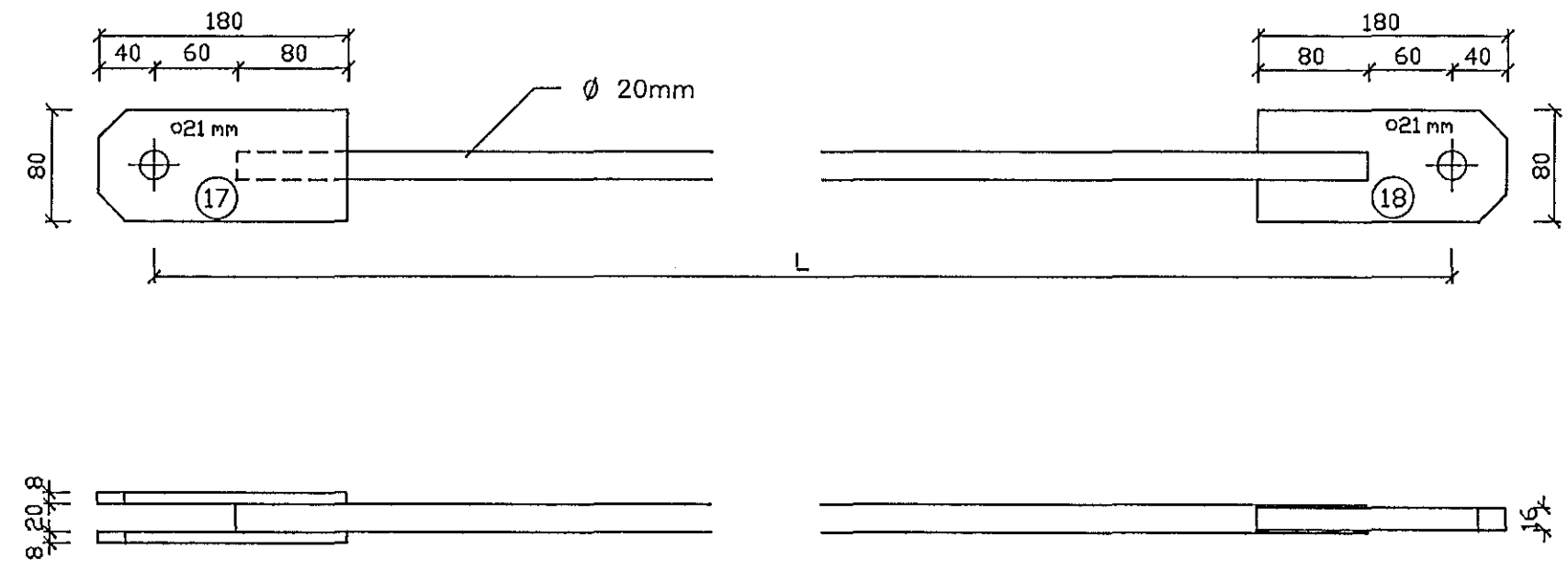
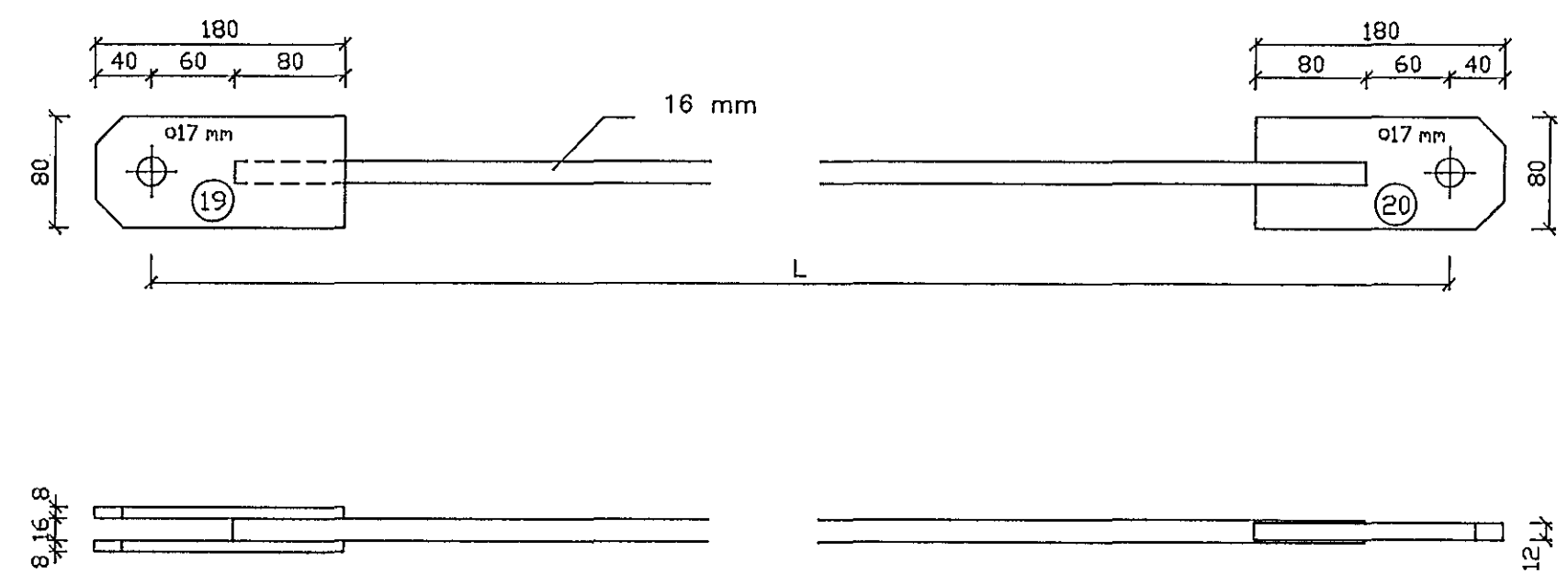


**A** HS9 – HS10 Strekkteinar Mkv. 1:5



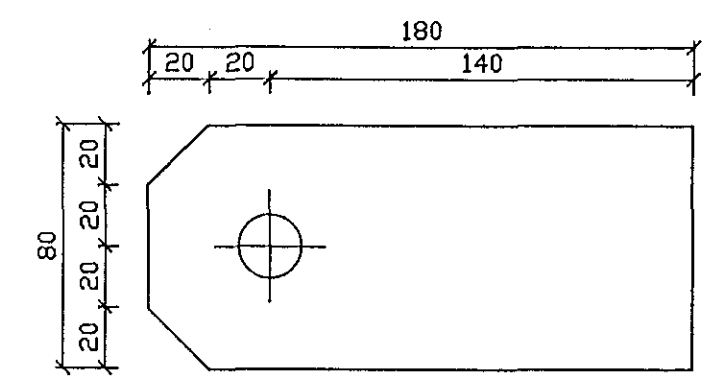
**B** HS11 – HS12 Strekkteinar Mkv. 1:5



			L	Fjöldi
A	HS9	20	4.665	4
	HS10	20	4.630	4
B	HS11	16	5.380	4
	HS12	16	5.520	4

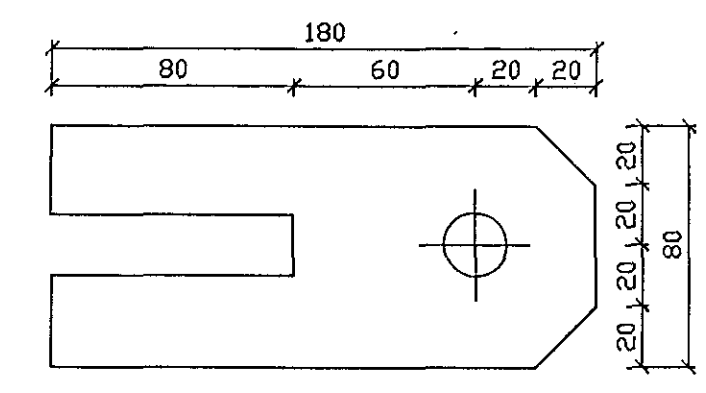
Plata 17 180\*80\*8 Mkv. 1:2,5 Samtals: 16 stk.

Plata 19 180\*80\*8 Mkv. 1:2,5 Samtals: 16 stk.



Plata 19 180\*80\*16 Mkv. 1:2,5 Samtals: 8 stk.

Plata 20 180\*80\*12 Mkv. 1:2,5 Samtals: 8 stk.



SKÝRINGAR

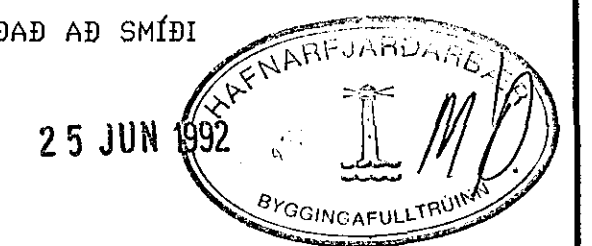
ÖLL MÁL ERU Í mm

STÁLGAÐI SMÍÐASTÁLS SÉ st. 37,2

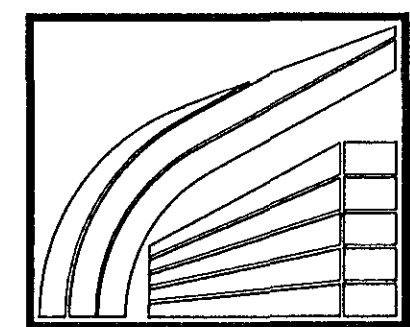
LEYFILEG POLVIK Í SMÍÐI PLATNA OG STAÐSETNINGU BOLTAGATA SÉ +/- 1 mm

SUÐUR SKULU HEILSJÓÐAST MEÐ  $\alpha \geq 5$  mm NEMA ANNÐ SÉ TEKID FRAM

ALLT STÁL SKAL GALVANHÚÐAÐ AÐ SMÍÐI LOKINNI



SORL-204.DWG



**LÍMTRÉ HF.** FLÚÐUM S: 98-66750 REYKJAVÍK S: 91-687202

Reiðskemma Sörla, Hafnarfirði

Stálfestingar

Framleiðsluteikning

TEIKN.	DAGS.
REIKN.	VERK
YFIRF.	BLAD
MKV.	1:5
204	
<i>Þorinn Þrygsson</i>	

Breyting	Dags.	Skýring	Br.