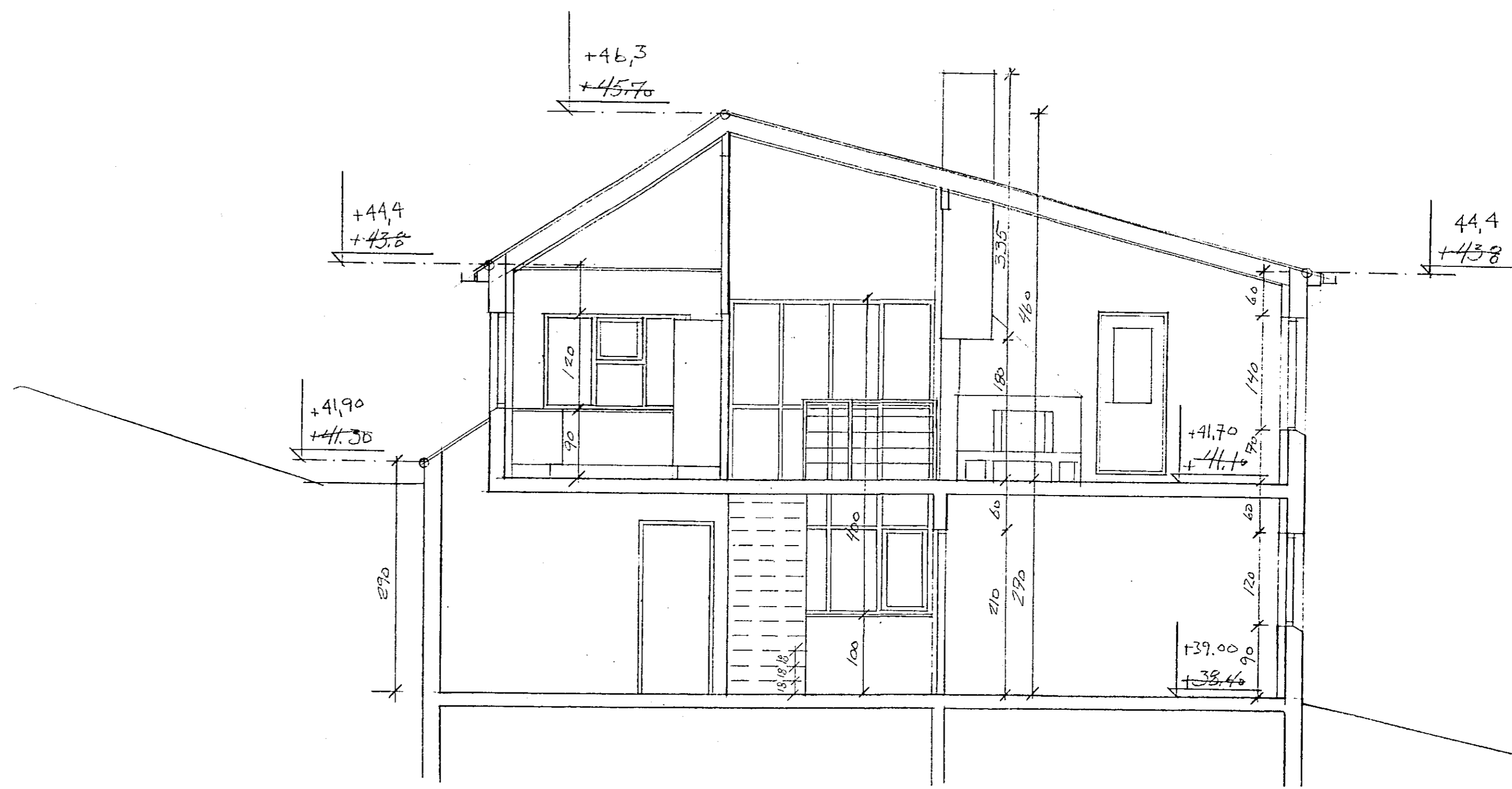
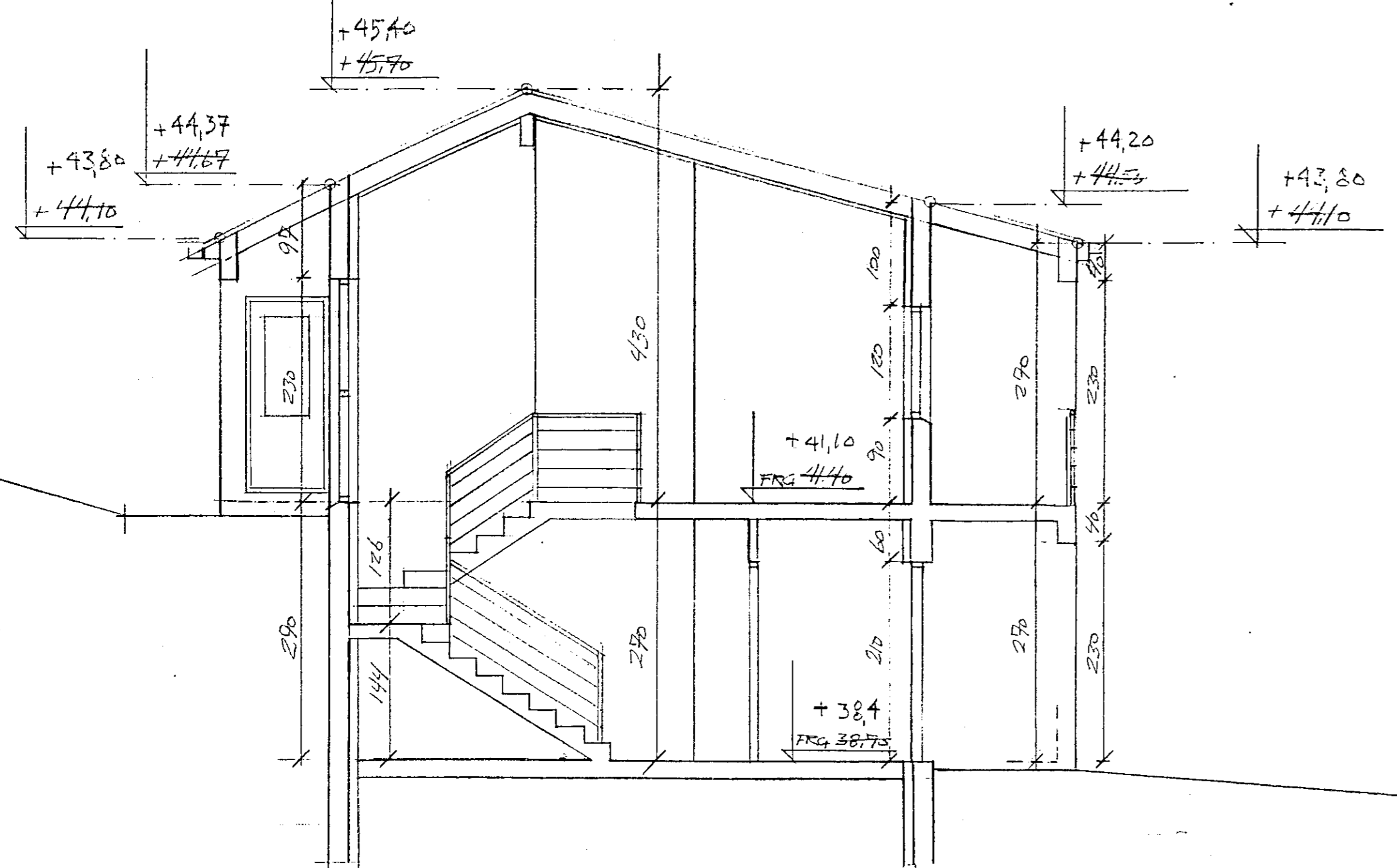


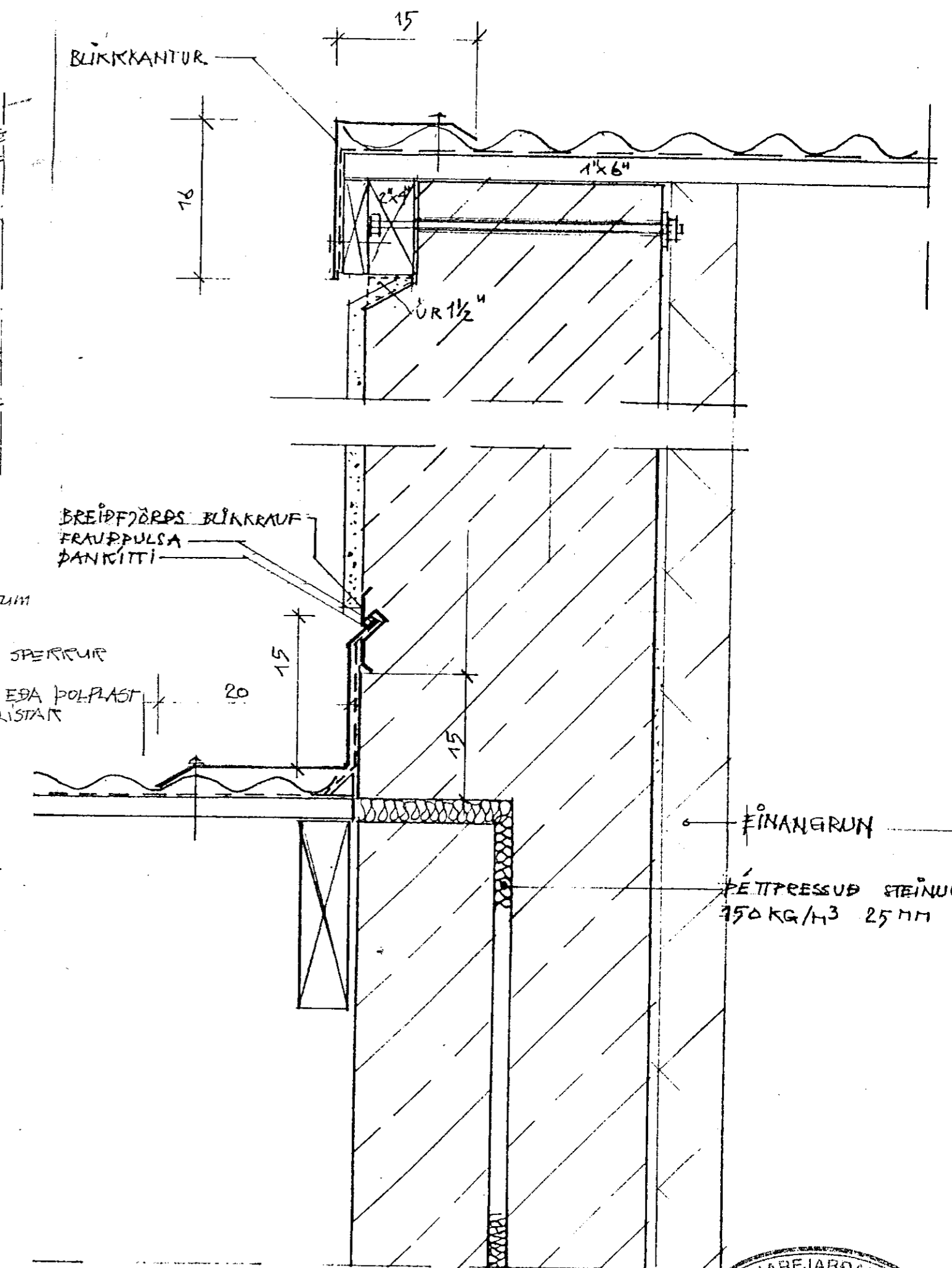
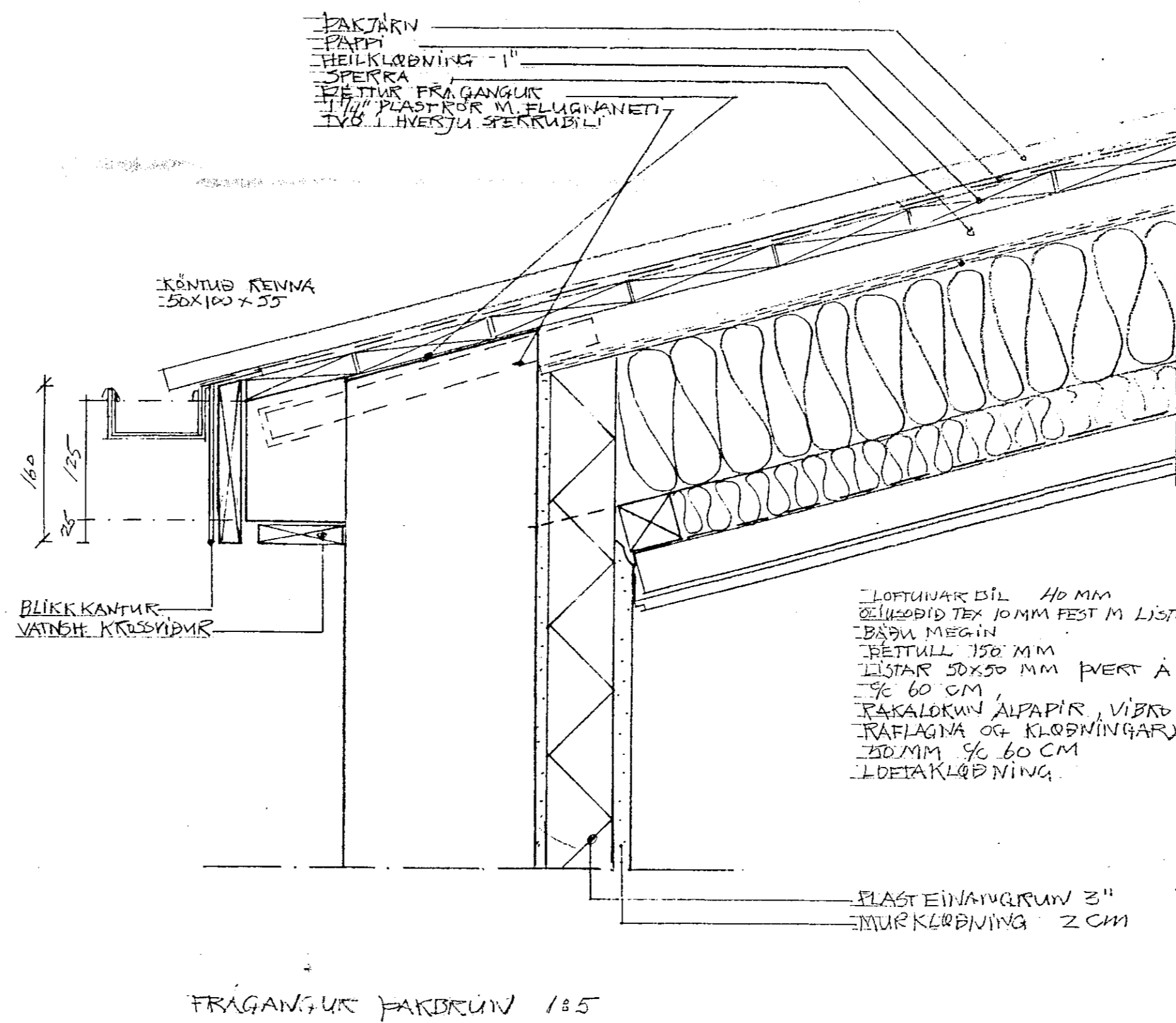
SNÍDMYND I KJARRBERG 1 A-A 1:50  
(KJARRBERG 5 SPEGLIVENT)



SNÍDMYND I KJARRBERG 5 C-C 1:50  
(KJARRBERG 1 SPEGLIVENT)

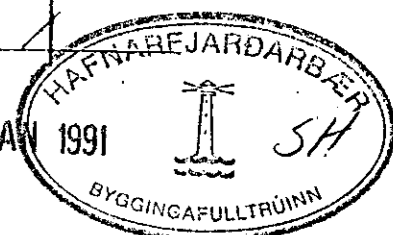


SNÍDMYND I KJARRBERG 3 B-B 1:50



SAMSKYTI HÚSA

08 JAN 1991



KJARRBERG 13. HAFNARFIRÐI A1  
Sníðmyndir, þakbrúnir  
M-1:50, 1:5, 16.11.1990  
Sigurþór Aðalsteinsson, arkitekt