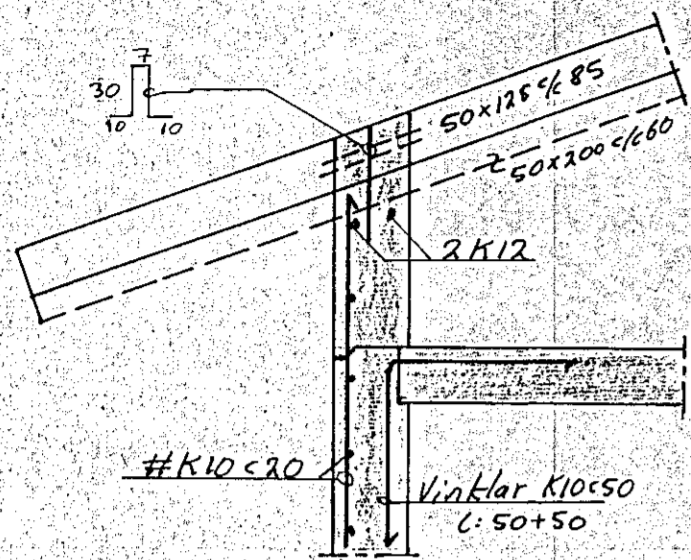
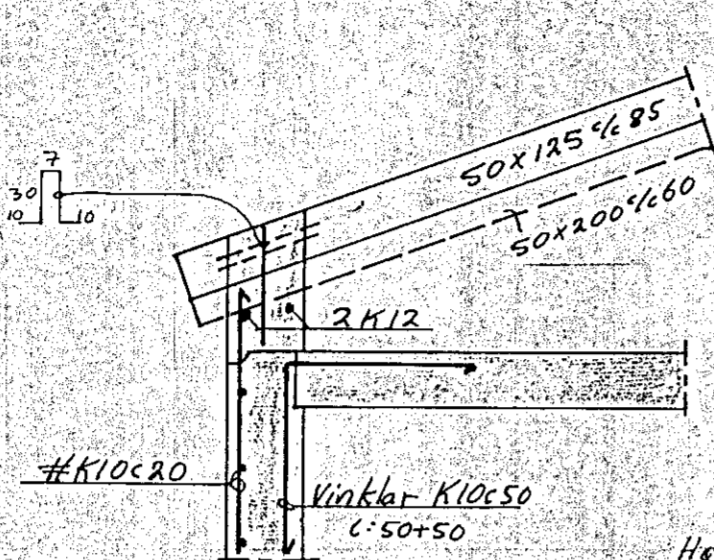


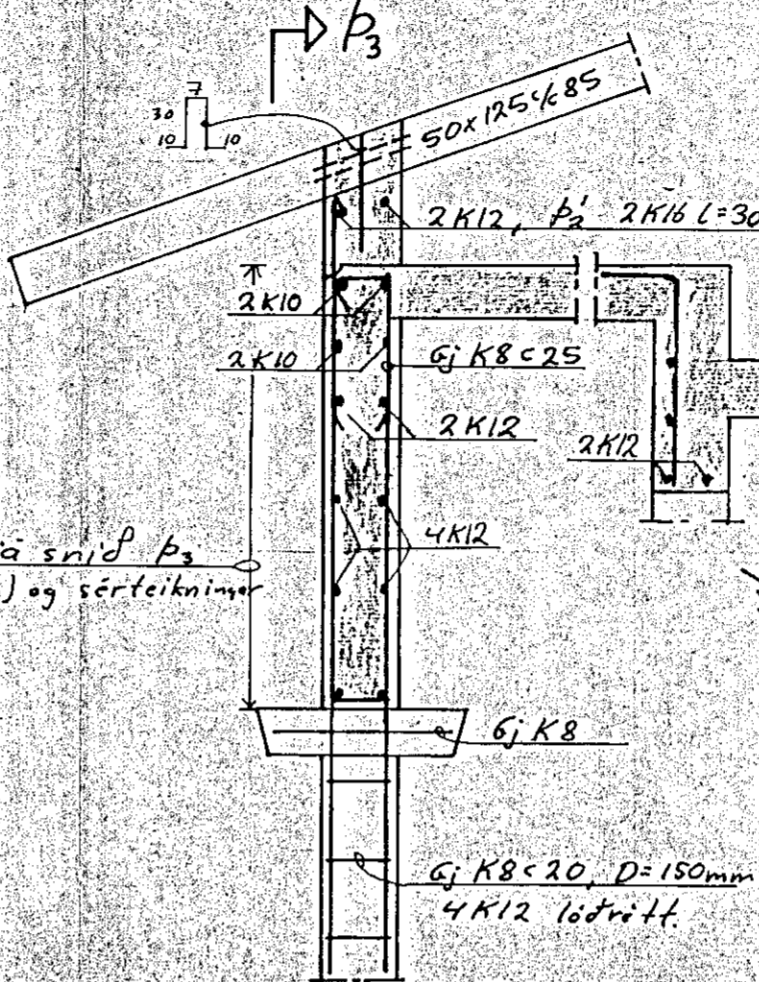
Snit p1 1:20



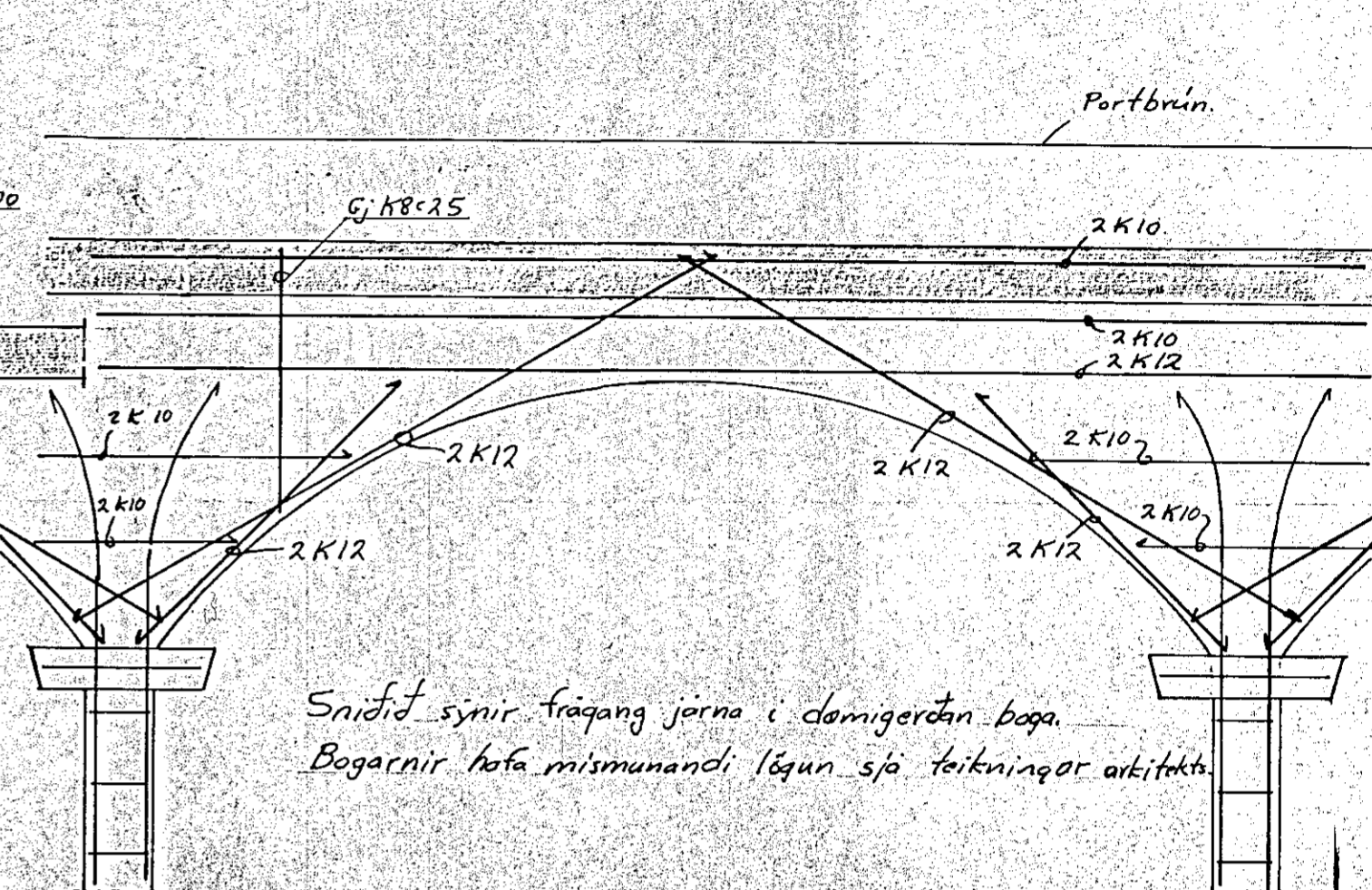
Snit p1 1:20



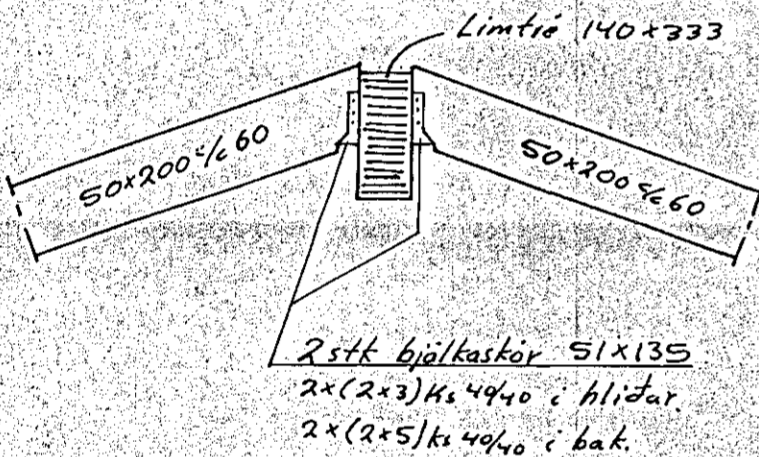
Snit p2 1:20



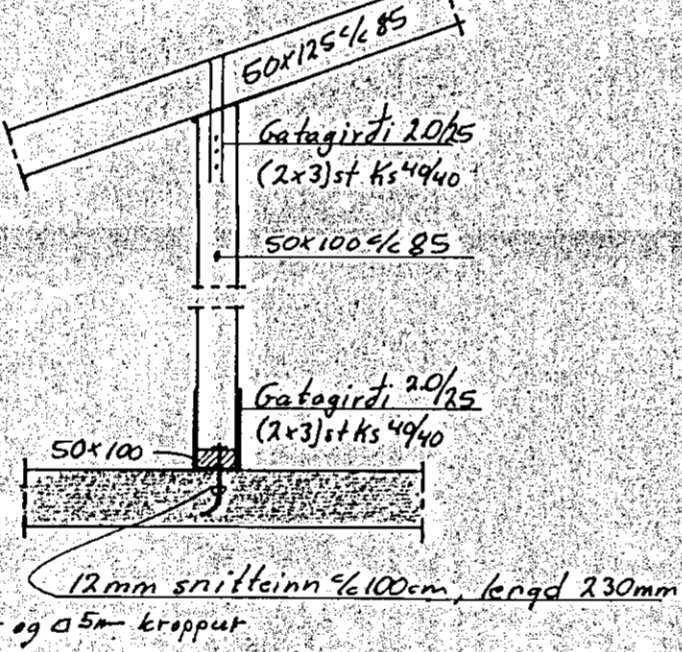
Snit p3 1:20



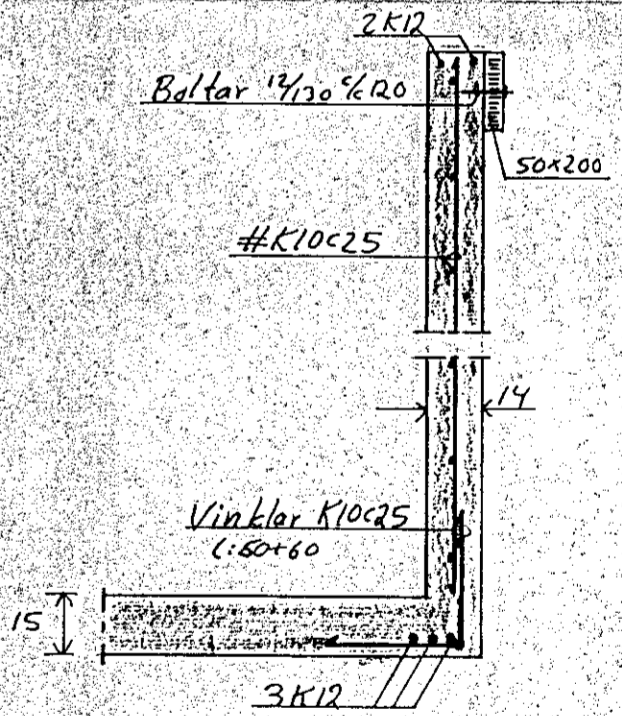
Snit p4 1:20



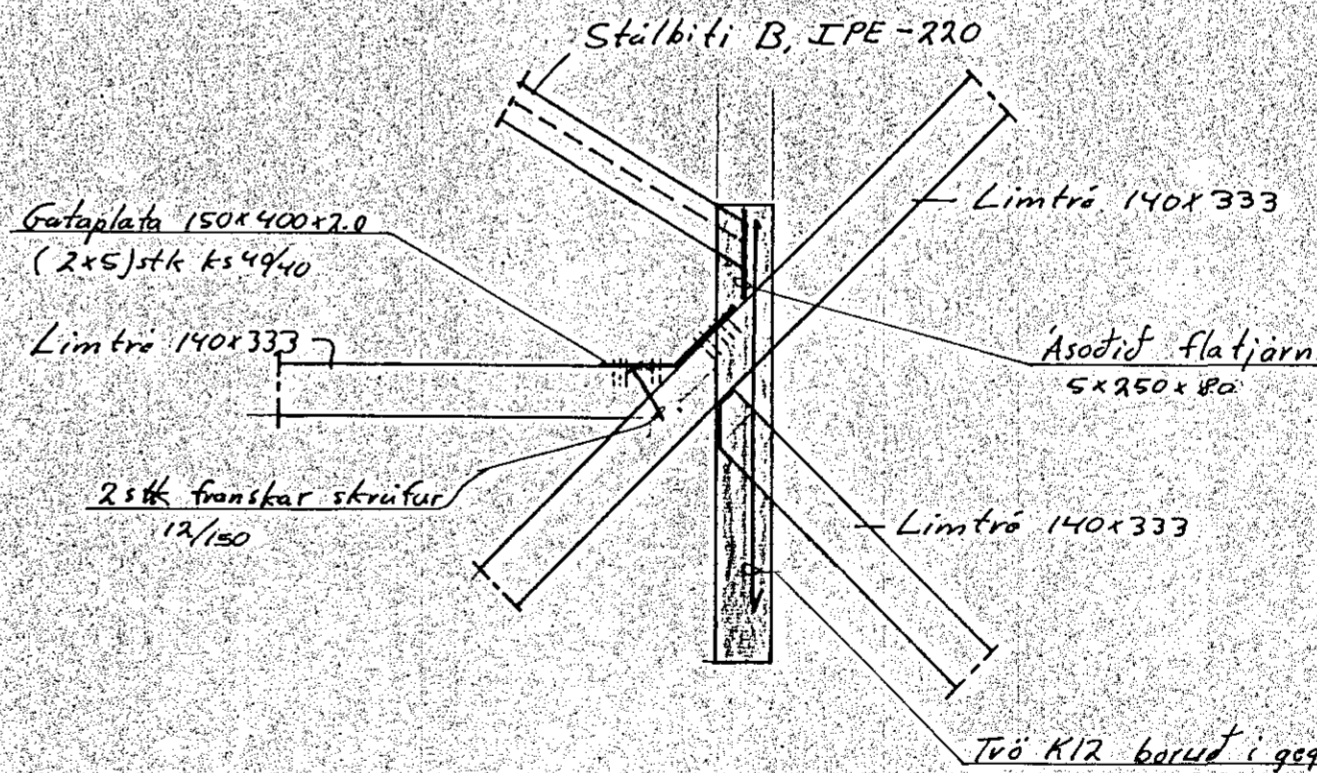
Snit p5 1:20



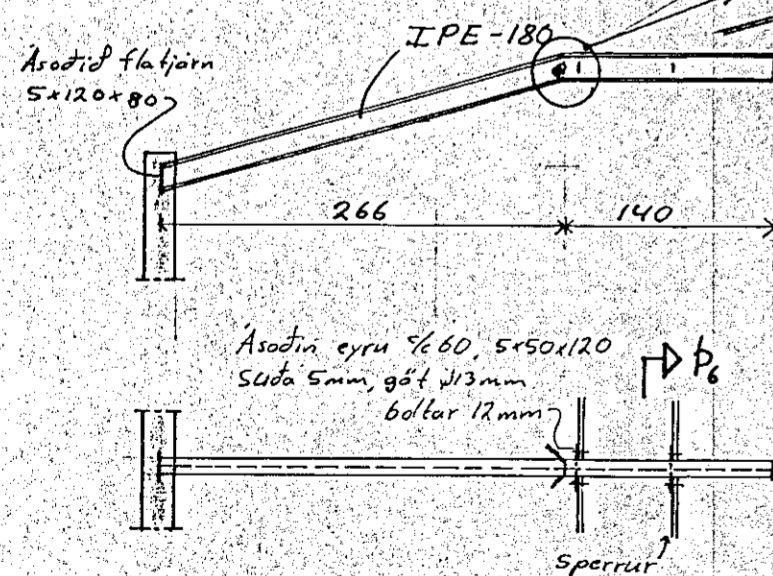
Snit p6 1:20



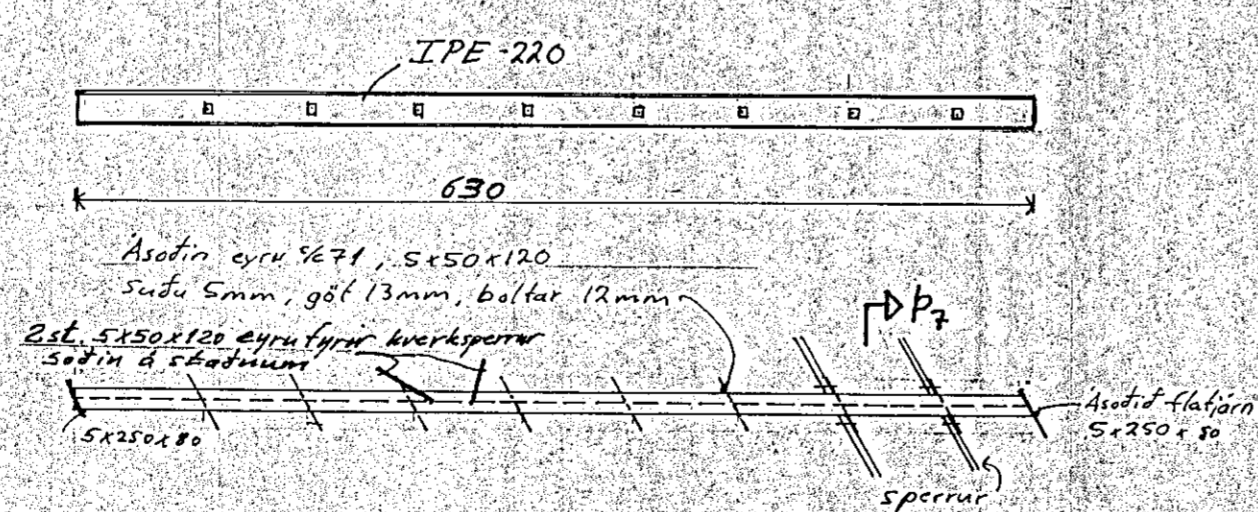
Snit F1 1:20



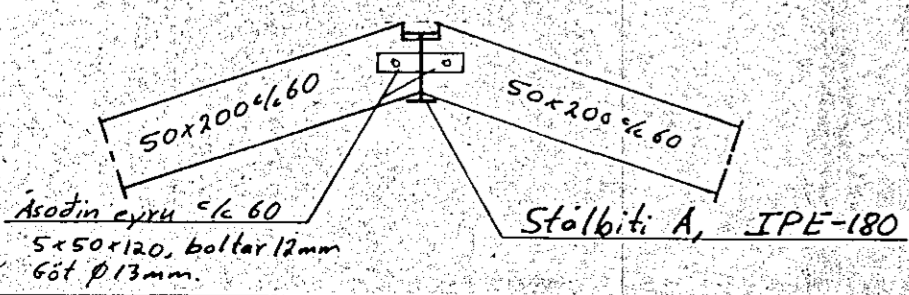
Stálbiti A 1:50



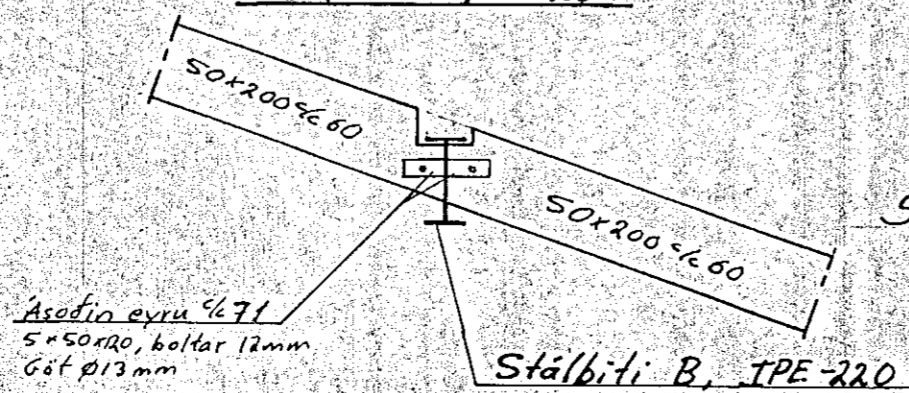
Stálbiti B 1:50



Snit p6 1:20



Snit p7 1:20



Hæð þreyfing sjá snit p2 (merking á jörnum) og sérteikningar arkitekts.

Snidit synir fra gang jerna i domigerdan bogu. Bogarnir hafa mismunandi lögun sja teikningar arkitekts.

Adur en stalbitar eru pantadir skulu malsetningar stadfestot a stöðum. Bitar A og B skulu sodnir saman a stöðum með heilsúða. (súða 5mm). Stalgaedi i gegnum/bitum sk. ISI/PS 412 Fe 360, súðuhæft.



Breytingar			LINDARBERG 2, HAENAREIRDI	
Nr.	Dags.	Nafr		
1	13/8 '91	K.P.	Verktæðistofa Þráinn Karlsson og Benedikt Skarphéðinsson sf. LAUGAVEGI 17B. SIMAR: 31770, 69775	HAFNARFJARDARBÆR M 1:20
				Nr. 7
				Dags. Mars '91

SNID Í BURÐARVIRKI