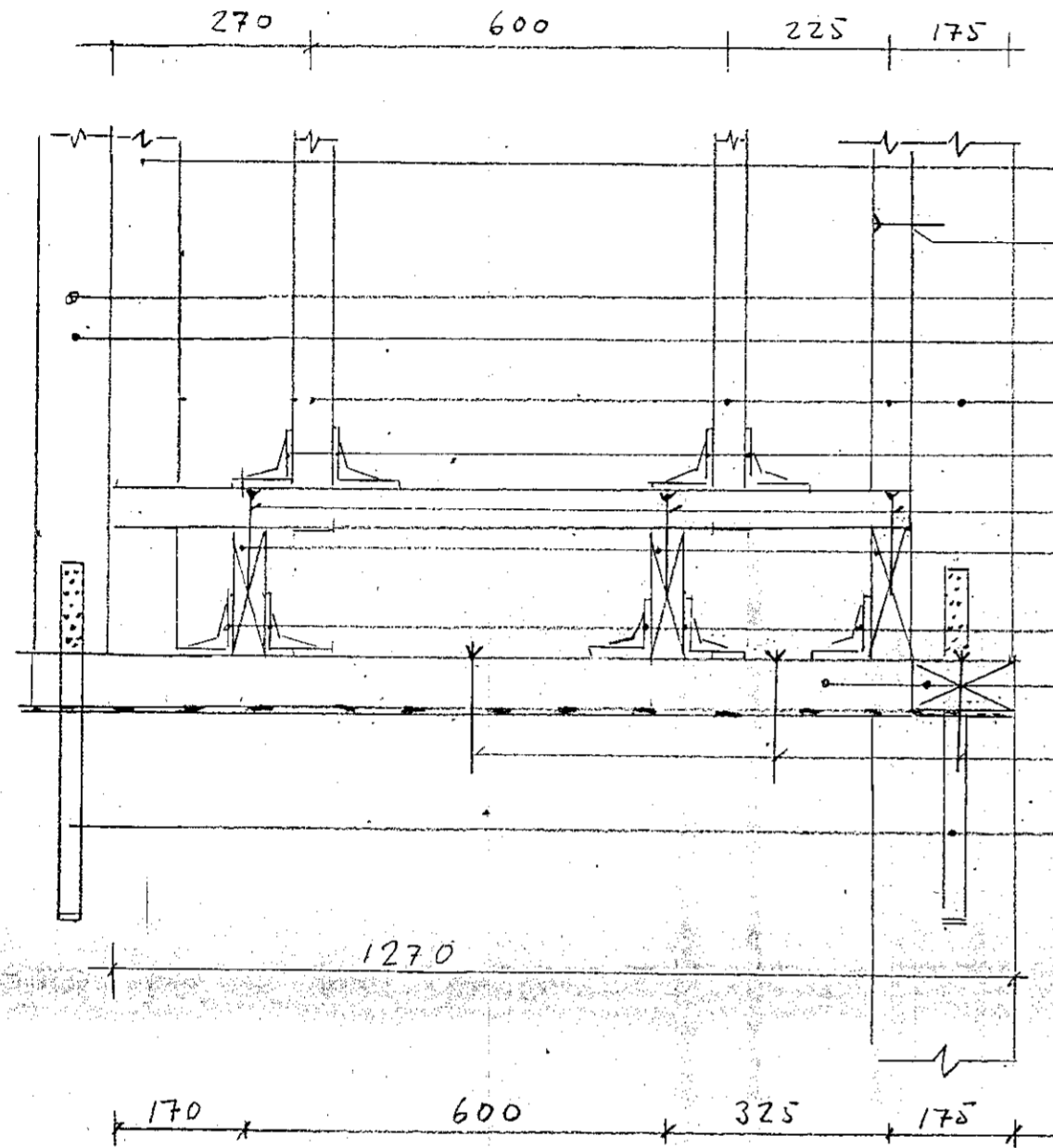
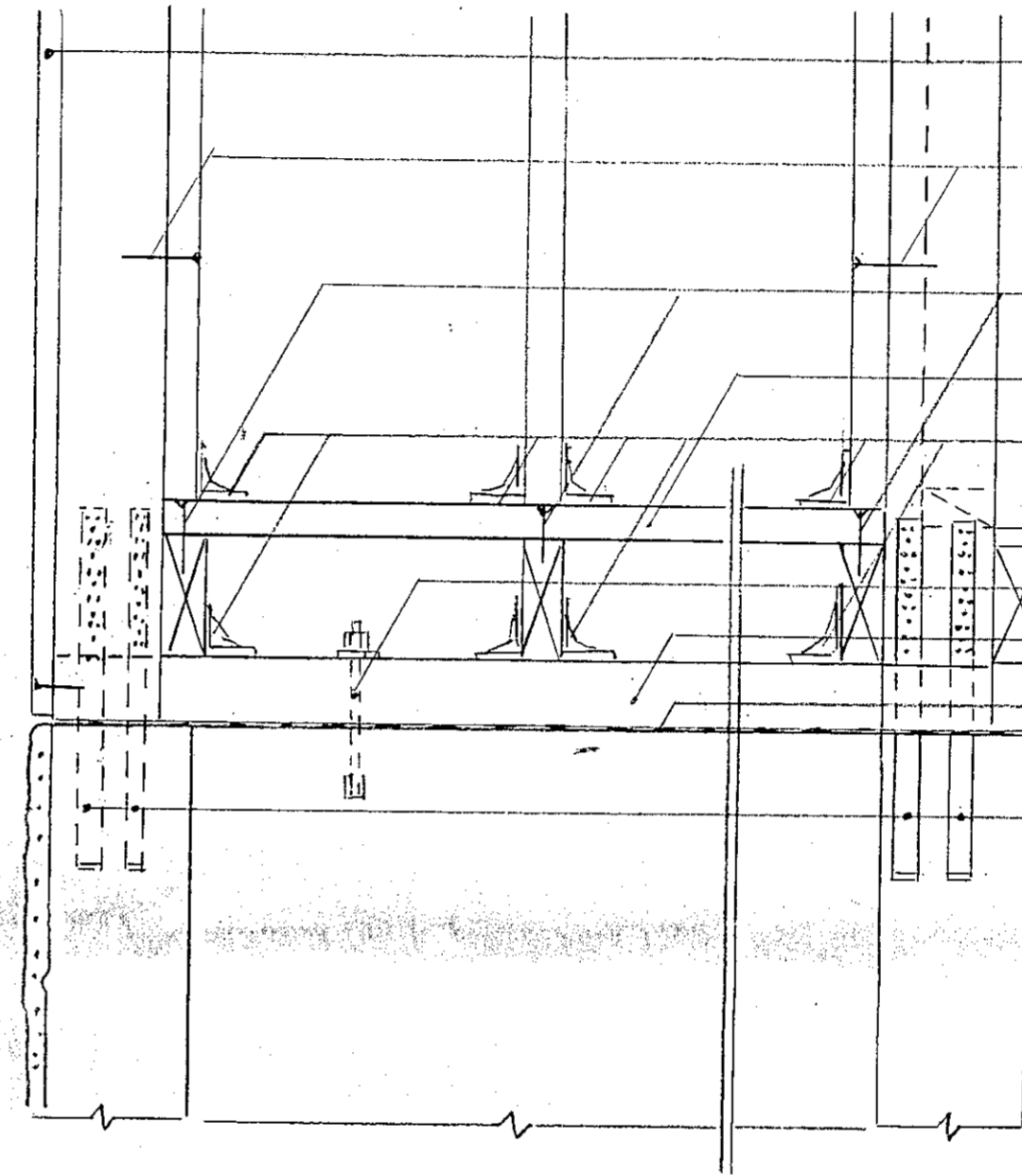


Snið B-B M 1:10

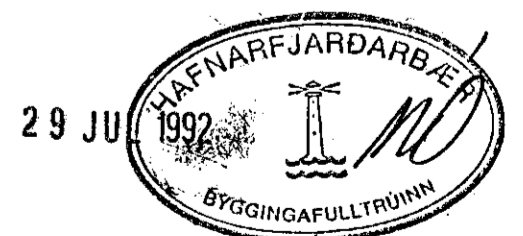


- Stoð 50 x 100
- Naglar 40/100 $\frac{1}{2}$ 300
- M12 3 stk á hældina
- Stoð 100 x 100
- Stoðir 50 x 150
- BMF-vinklar 90, 6+8 $\frac{40}{60}$
- Skrúfur 10 mm L=150
- Gólfbitar 50 x 175
- BMF-vinklar 90, 6+8 $\frac{40}{60}$
- Fótreamar 75 x 150
- 10 mm múrboltar L=175
- 2 BMF ankeri 500 x 4
- 2 x 12 stk $\frac{40}{40}$

Snið A-A M 1:10



- 22 mm spónaplatu, neqlist á röndum með $\frac{40}{60}$ $\frac{1}{2}$ 100
- $\frac{40}{100}$ $\frac{1}{2}$ 250
- 10 mm skrúfur, sökk
- Reim 50 x 150
- BMF vinklar 90 neqlist með $\frac{40}{60}$ 6+8
- 10 mm múrbolti L=175
- Fótream 50 x 150
- Tjörupappi
- BMF-ankeri 500 x 4 neqlist með 12 x $\frac{40}{40}$ á stykki.



HANNAÐ	13.7.92	RAF	Lækjargata 12 B Fótreamar, gólfbitar, stoðir Snið				
TEIKNAD	13.7.92	RAF					
YFIRFARIÐ		RAF					
SAMP.		RAF					
			TEIKNINÚMÉR: L5				
ÚTG.	BREYTING	DAGS.	NAFN	UPPHAFLL.	ÖGILDIR:	MÆLIKVARÐI: 1:10	A2