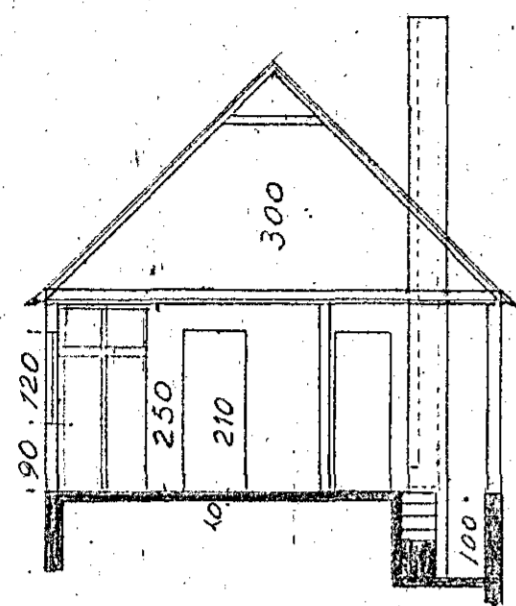
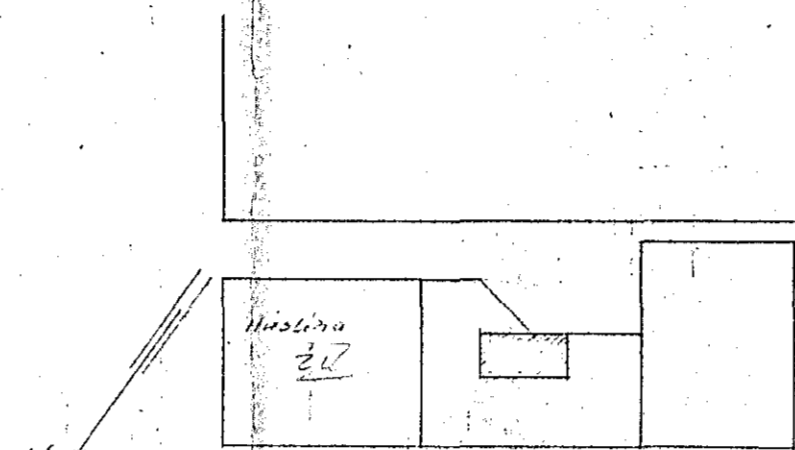


df. 20/6 1956

Hjalmar Þorgrímur

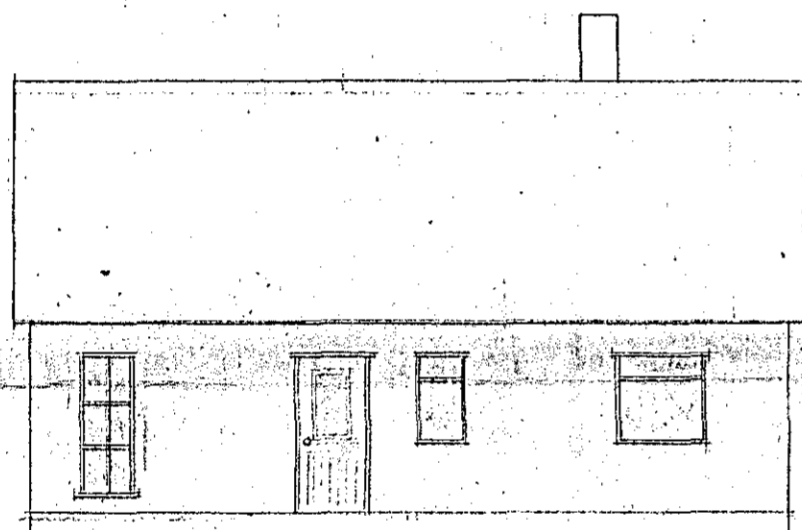


Sneið A-A

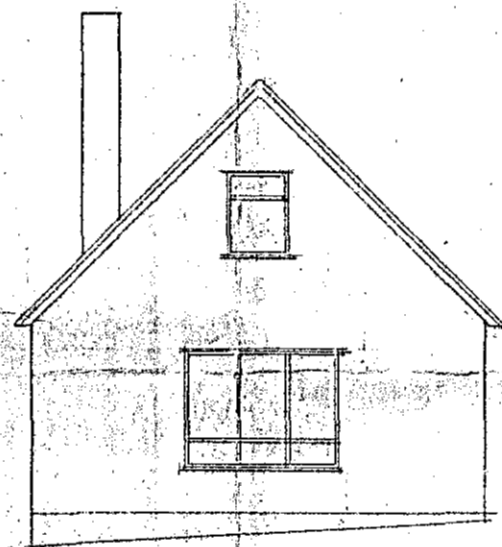


Reykjanesbraut

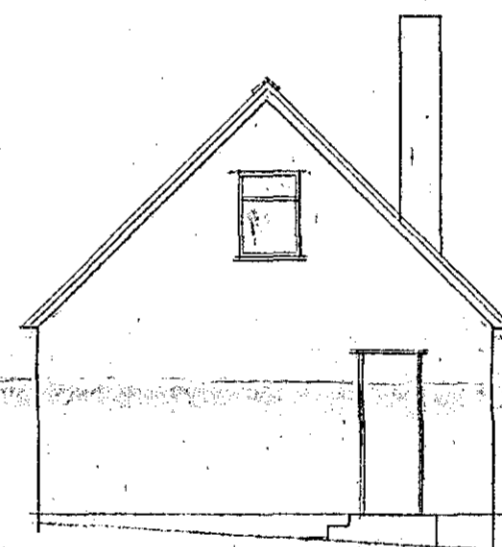
Afstöðumynd 1:1000



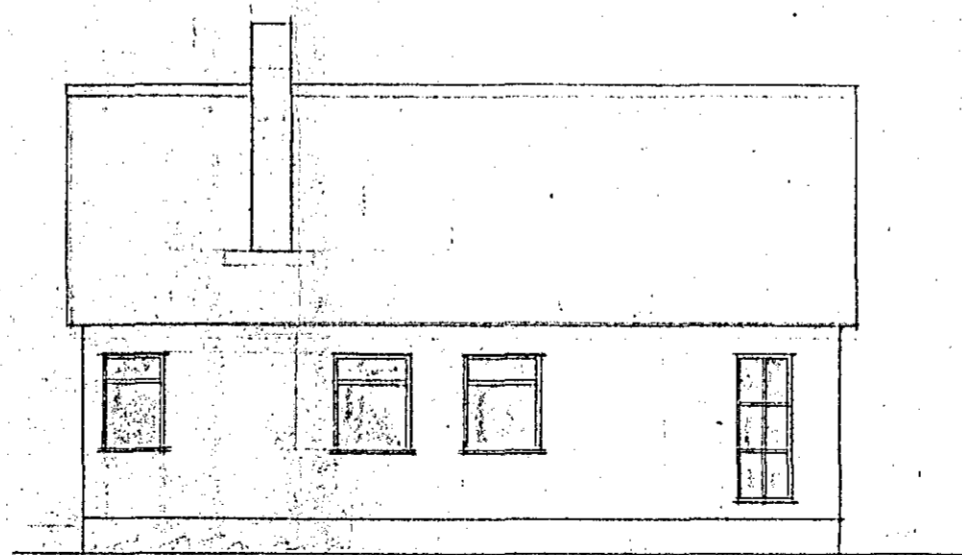
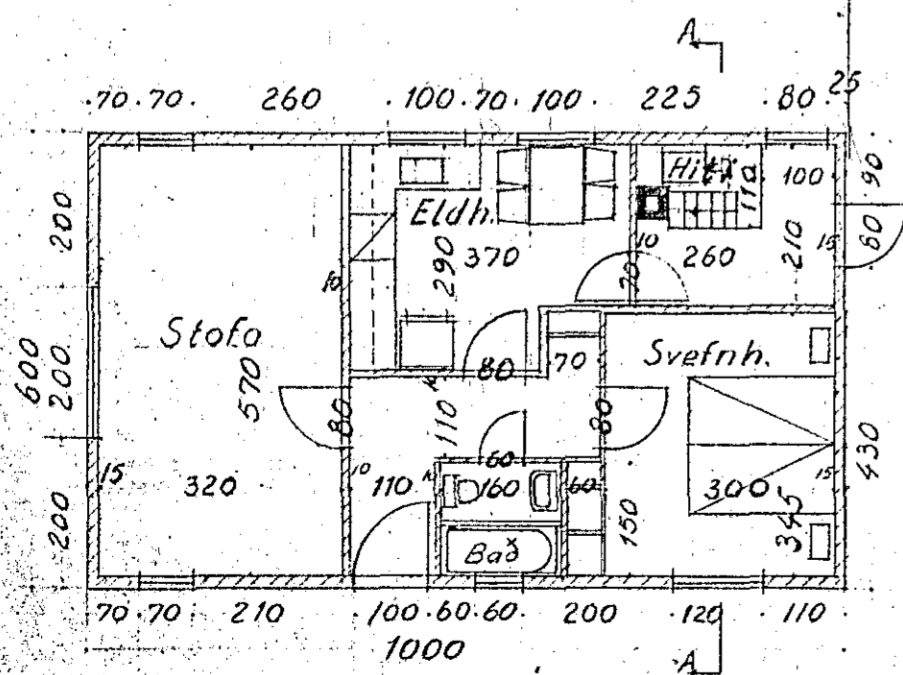
Suðurhlíð



Vestur



Austur



Norðurhlíð

Eignir G. J. Teiknari Gísli Júlíusson verkfræðingur Teikningur 11-13-21 Blað nr. 1 Mál. 1:100 Reykjavík 20-6-1956 Guðrún Júlíusson	Landstólpi h.f. verkfræðiskrifstofa Ingólfsstræti 0 - Sími 82757 4B M. Ólafsson Húsnr. 22 við íslefnagötu Eig. Arni Eiríksson Hafnarfirði
--	---