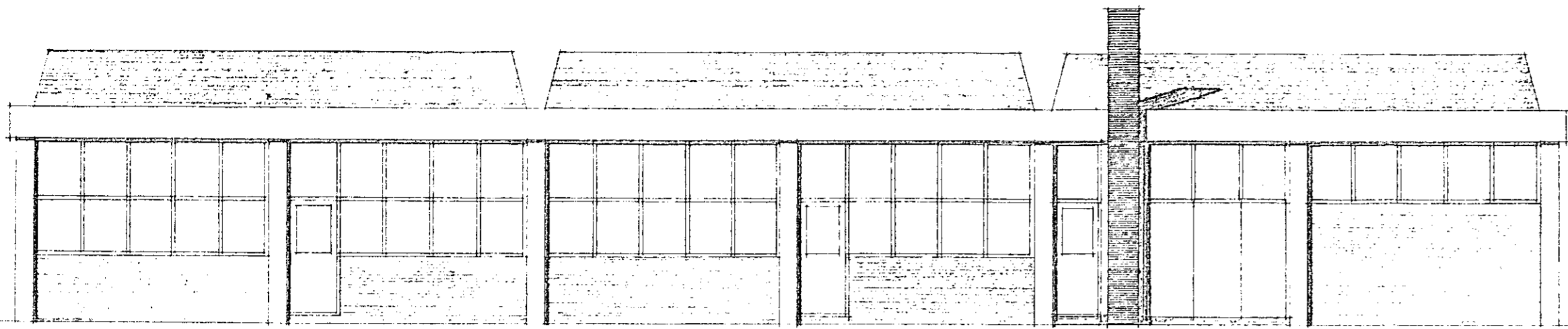
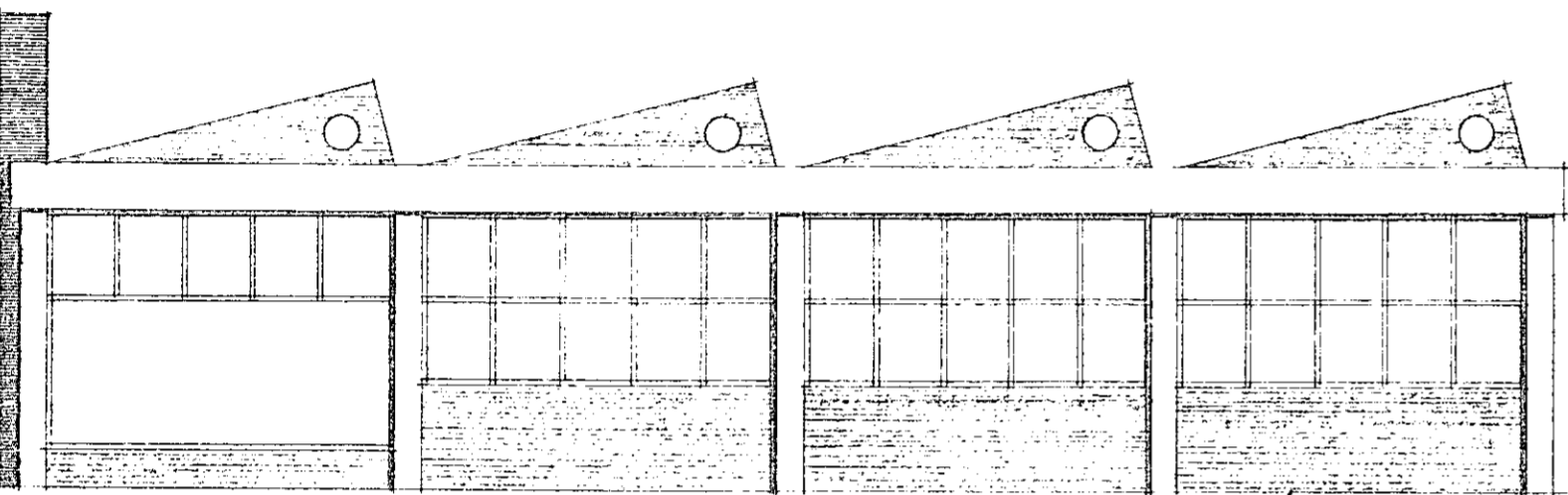


GÚMMÍVIÐGERÐARVERKSTÆÐI
ÚTLIT OG SNEIÐIR, MÁL 1:100.

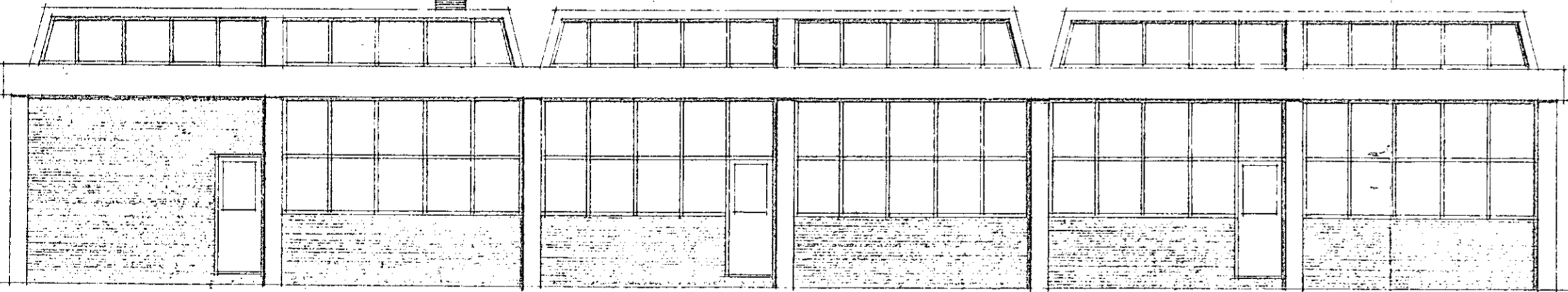


NORÐURHLIÐ

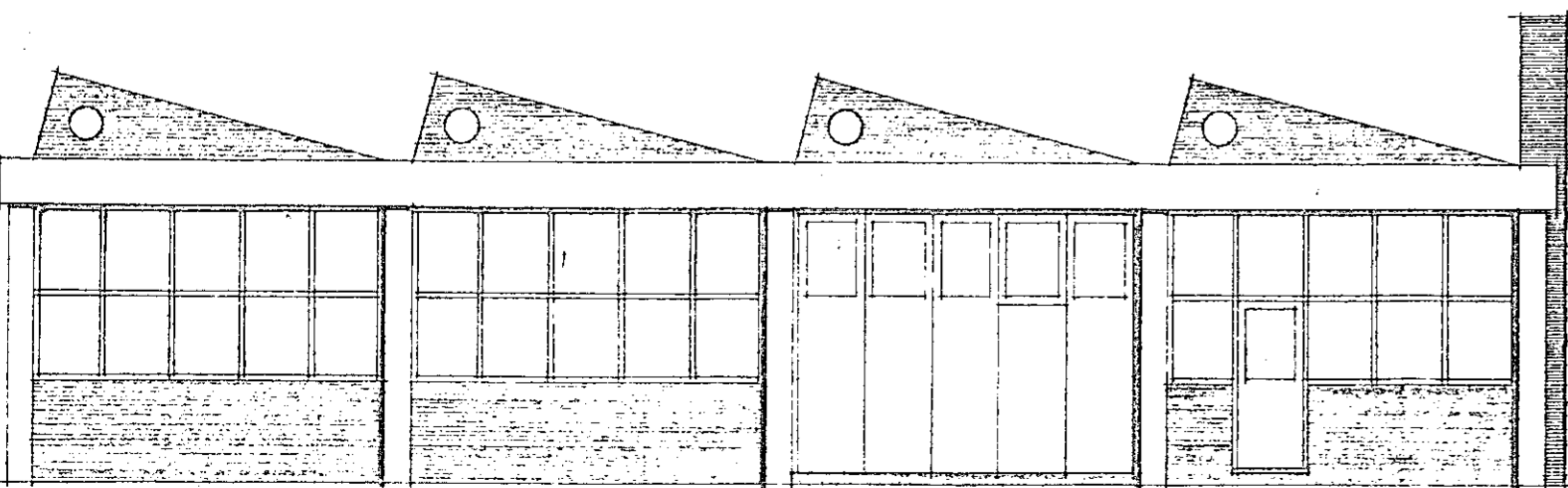


VESTURHLIÐ (AD VEG

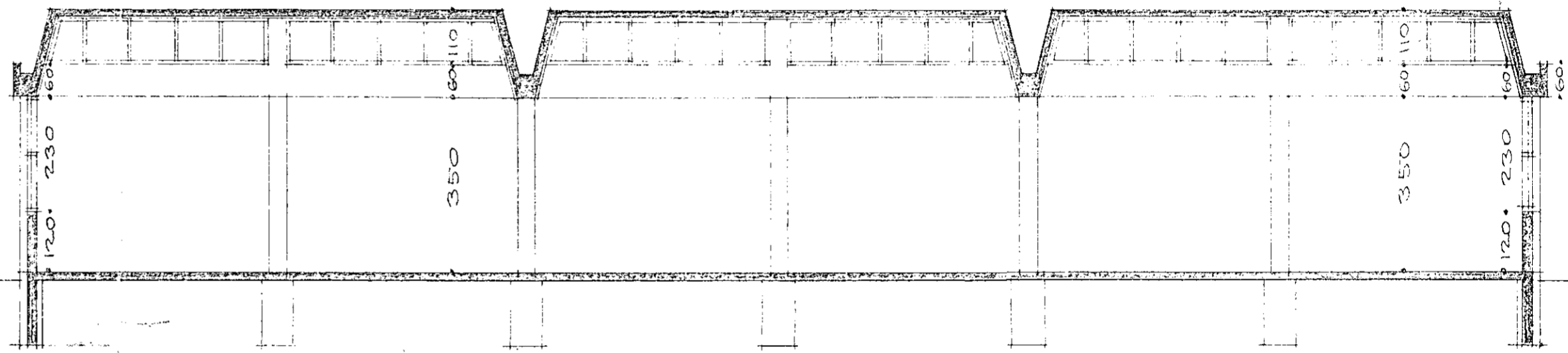
Samp. hertun á þessari hlið
F. H. Ólafsson
Olufsson & Sæmundsson
Suðurlandsbraut 46 - 2201199



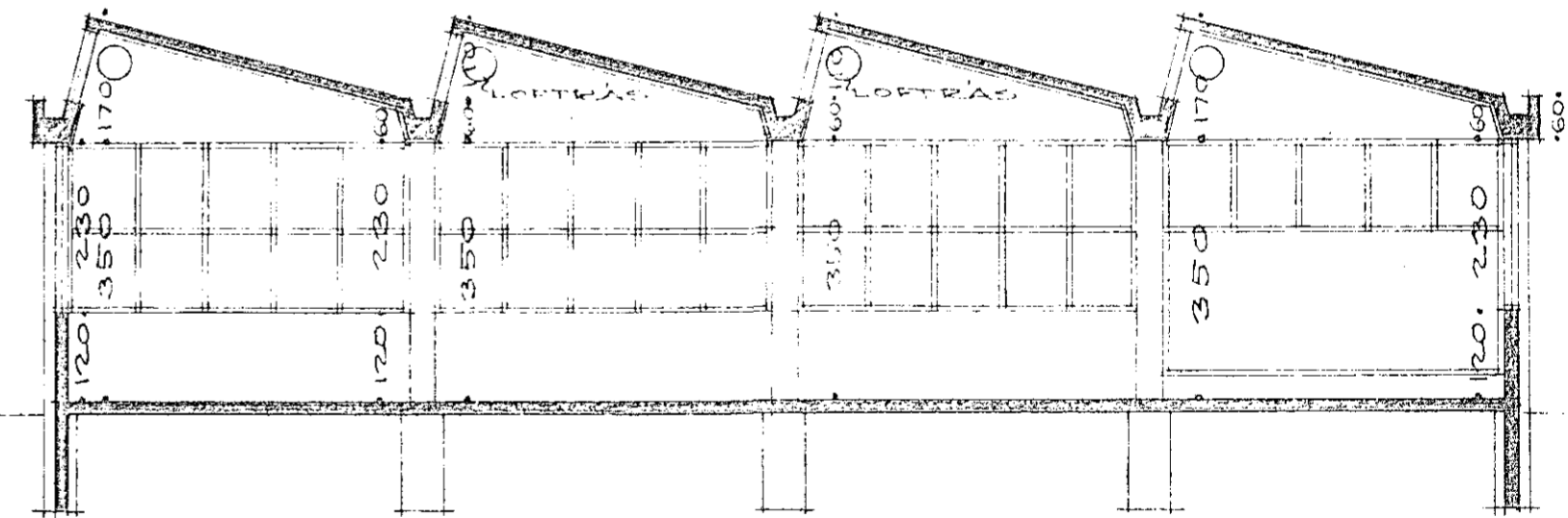
SUÐURHLIÐ



AUSTURHLIÐ



SNEIÐING



SNEIÐING

Husarm Háaldur Þorvaldsson
Munarm Þórisbjörn Þorvaldsson
Piparm Gunnar Halldórsson

BYGGINGAFLUTRÚNN
I HAFNARFÉÐI
1964

V-223-3
SNEIÐIR OG ÚTLIT
MÁL 1:100.
5-9-1964.
KVARTAN SIGURÐSSON
ARKITEKT P.A.L. HAGAMEL38.