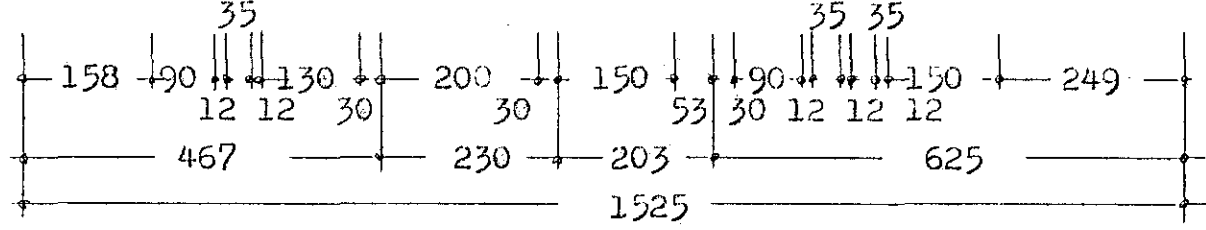
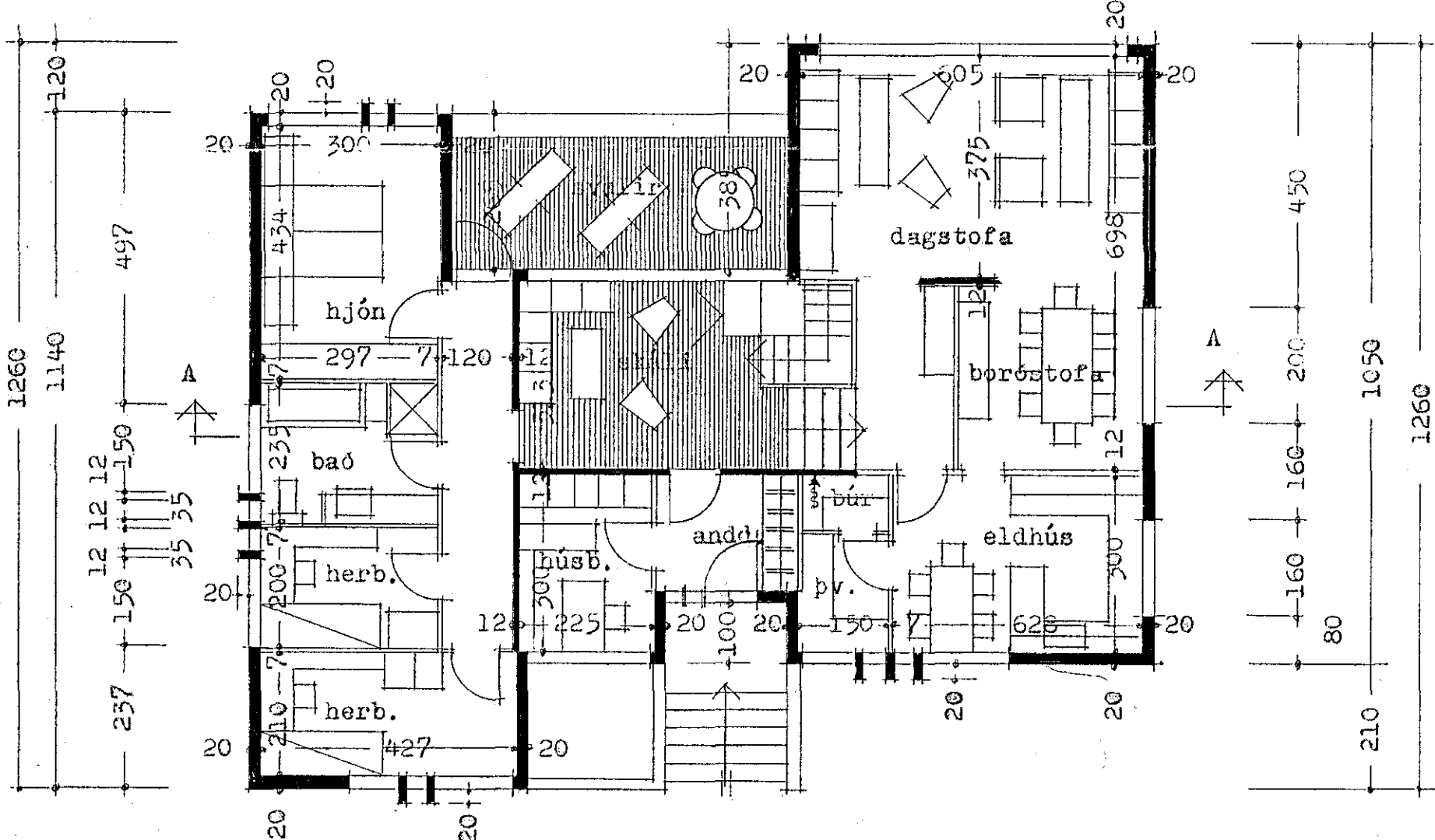
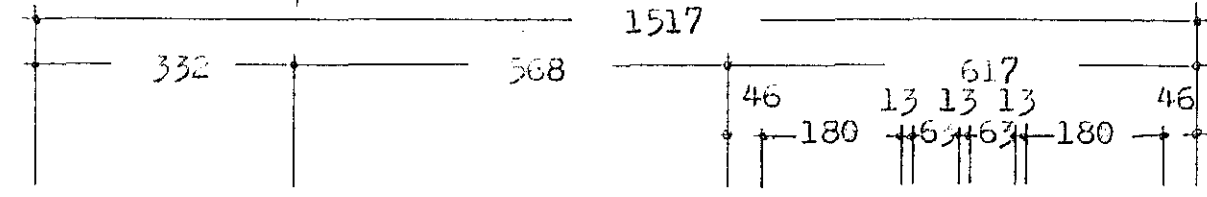
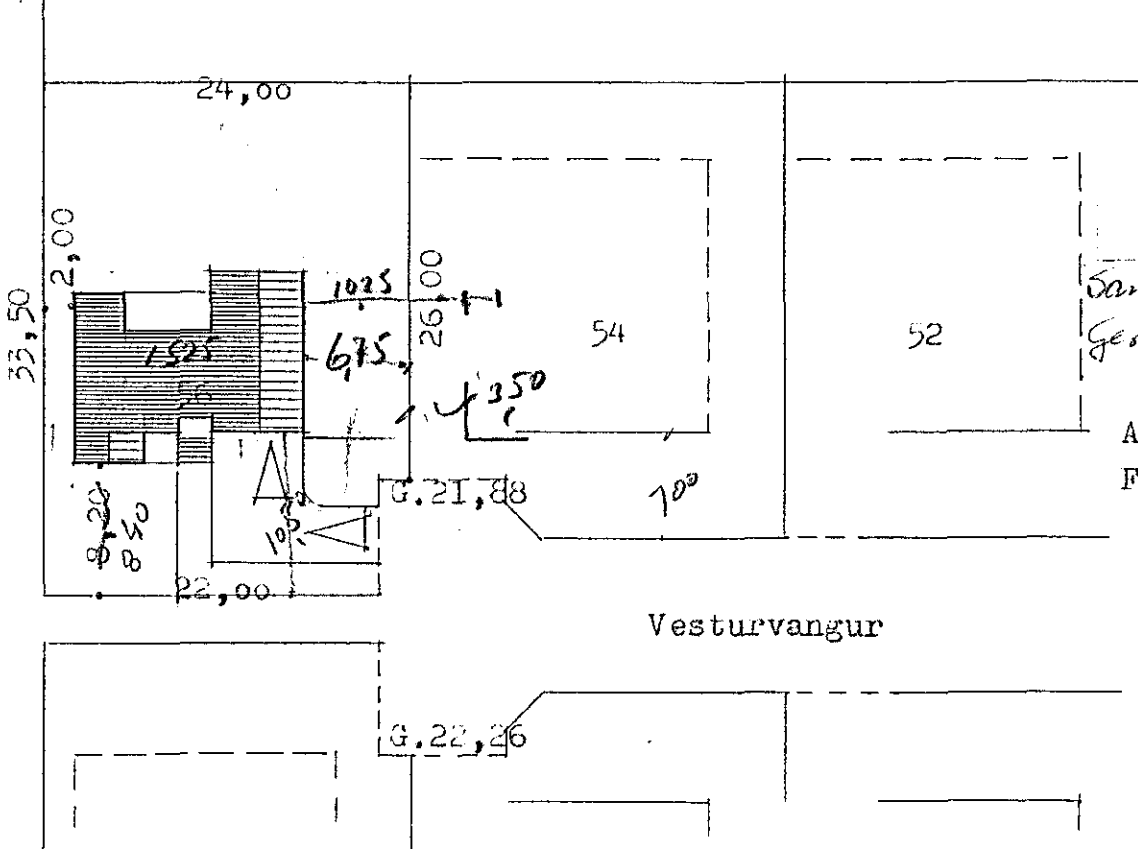
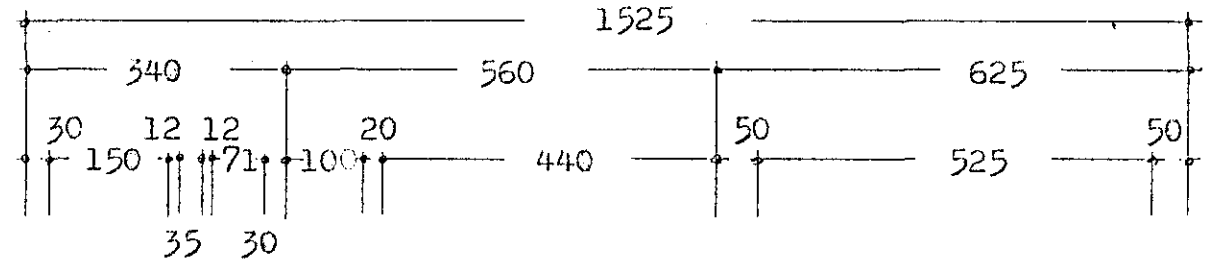
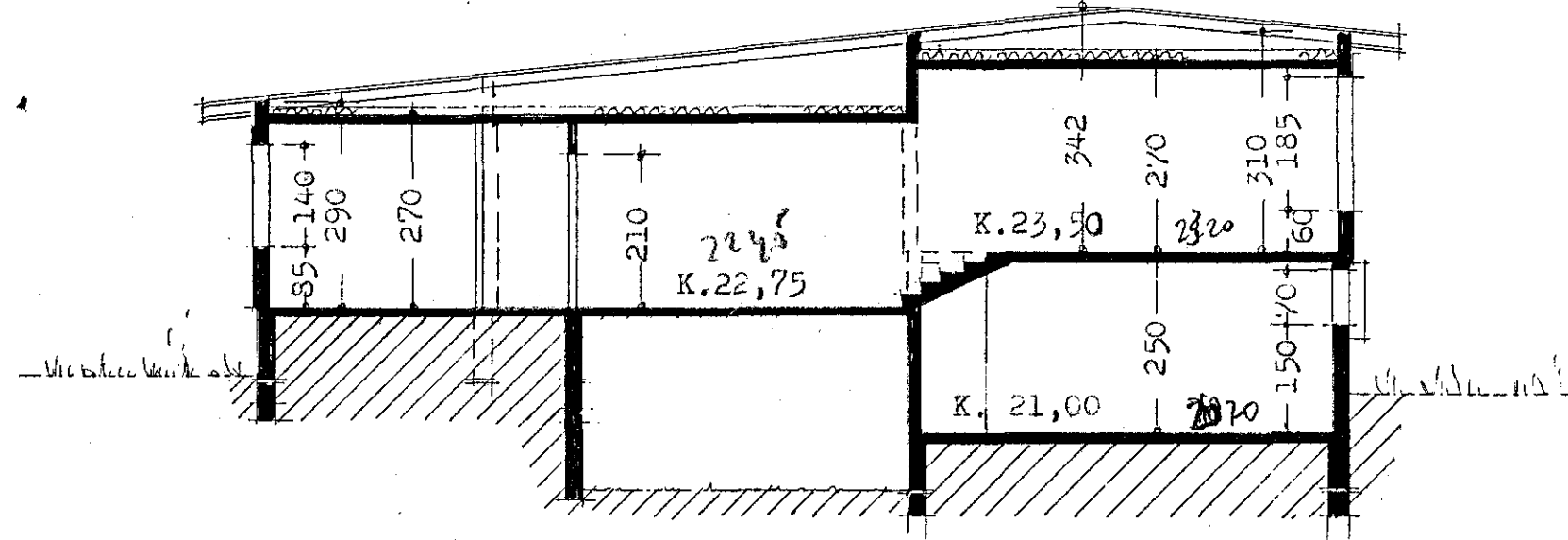


Samþykkt á fundi bygginga-  
nefndar þ. 13/11 1974  
BYGGINGAFULLTRÚINN  
Í HAFNARFIRÐI  
F. Sigurðsson

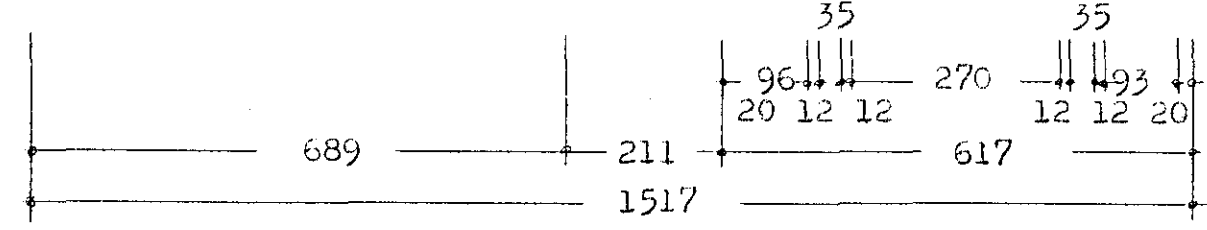
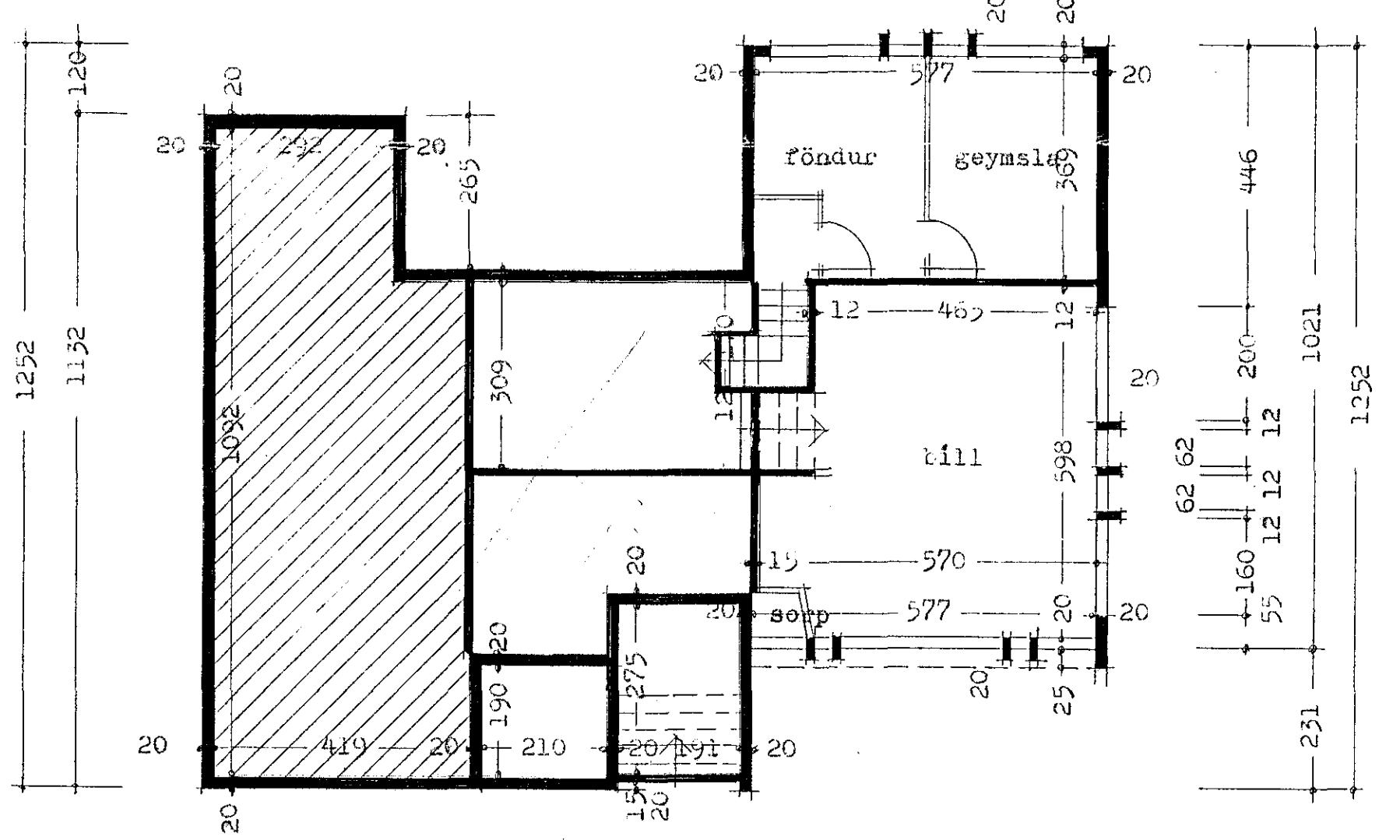
Vardi húsið lifað upp til...  
með olíuendileikjum...  
stál hafi fallt samræð við...  
og stökkuð ísþjóra um frétta...  
útr. naðar.

Samtæma þarf húsastela byggingarskiðna.  
Gera þarf eplu fyrir hitaveitunnetki.

Afstöðumynd m.1:500  
Flatarmál 1. hæðar 141,7 m.<sup>2</sup>



grunnmynd 1. hæð



grunnmynd kjallara

Reykjavík í nóv. 1974  
Þjartar Sveinsson