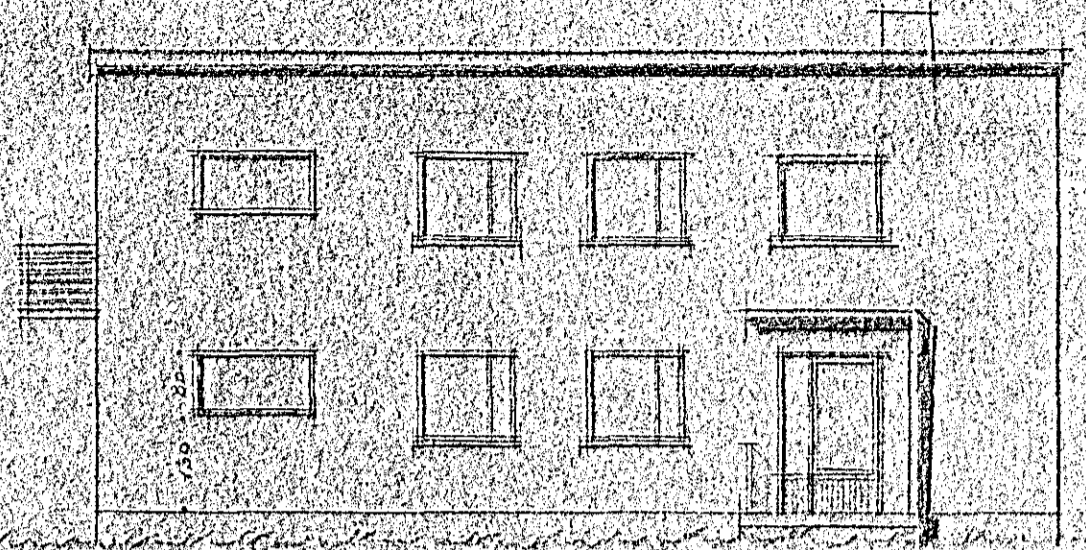


Húsið við Eilífubærinn nr. 11  
M 1:100

Hússkilið 120,0 m<sup>2</sup>

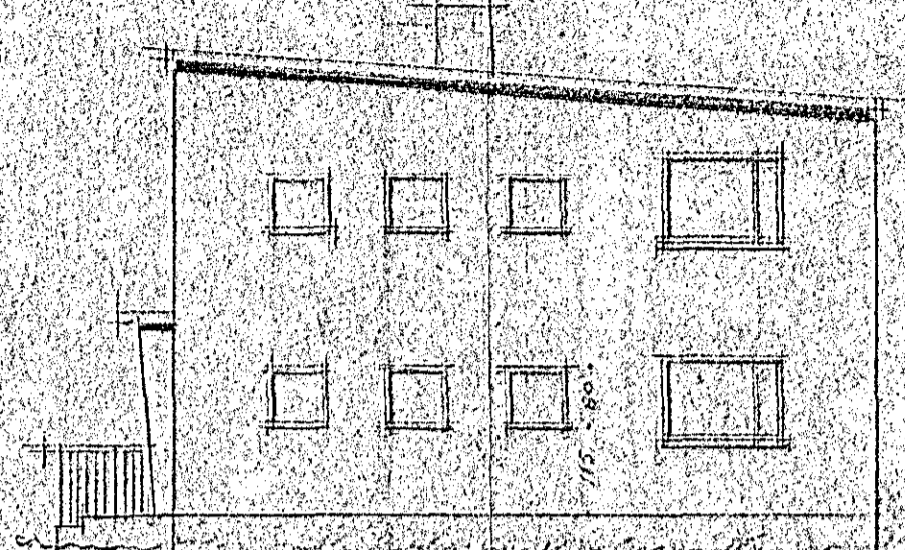
Ólafur Stefánsson

SP 8/8 5/8



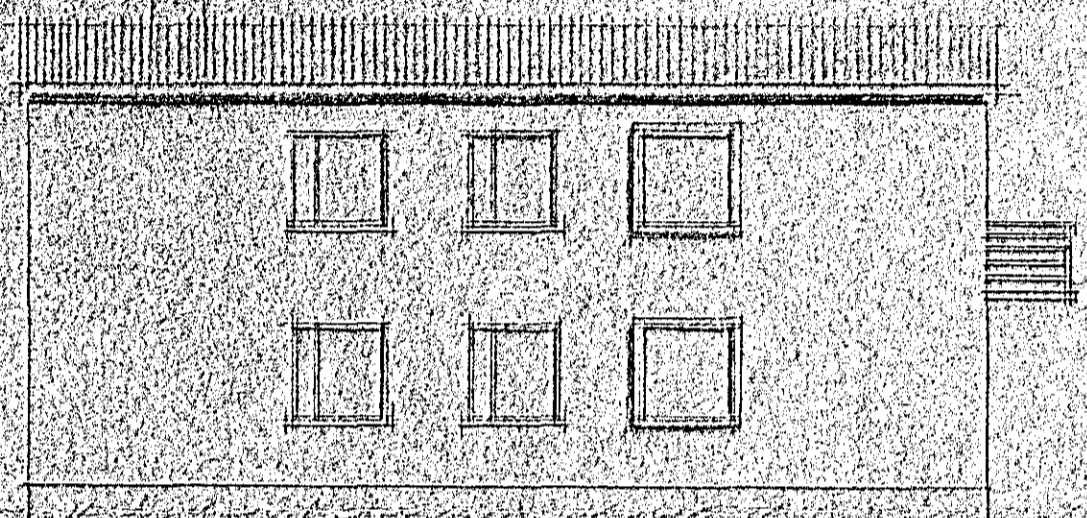
Gæðullíð

SV



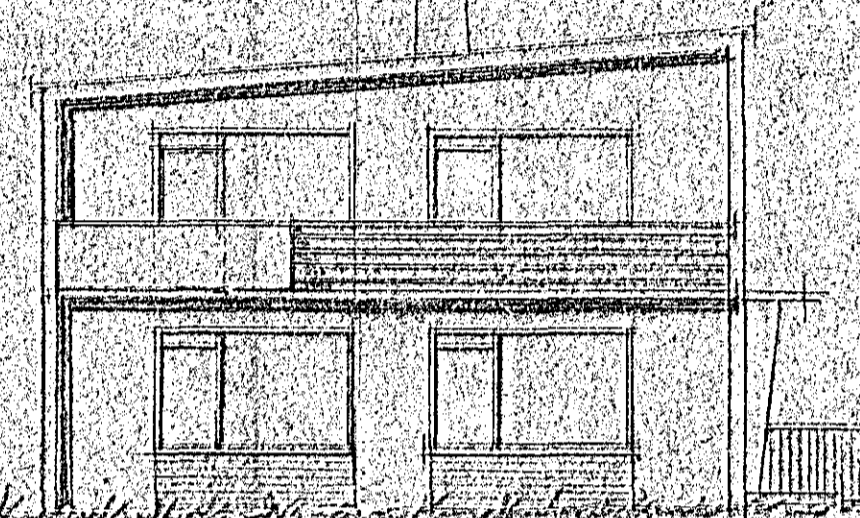
Norðarsíða

SA



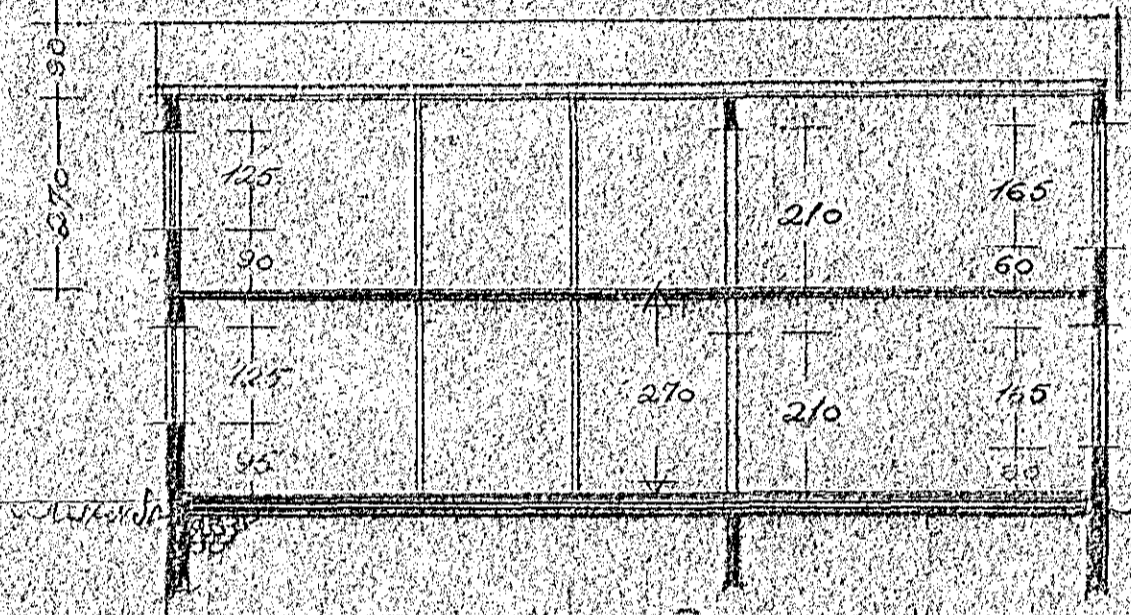
Norðvestri

NA

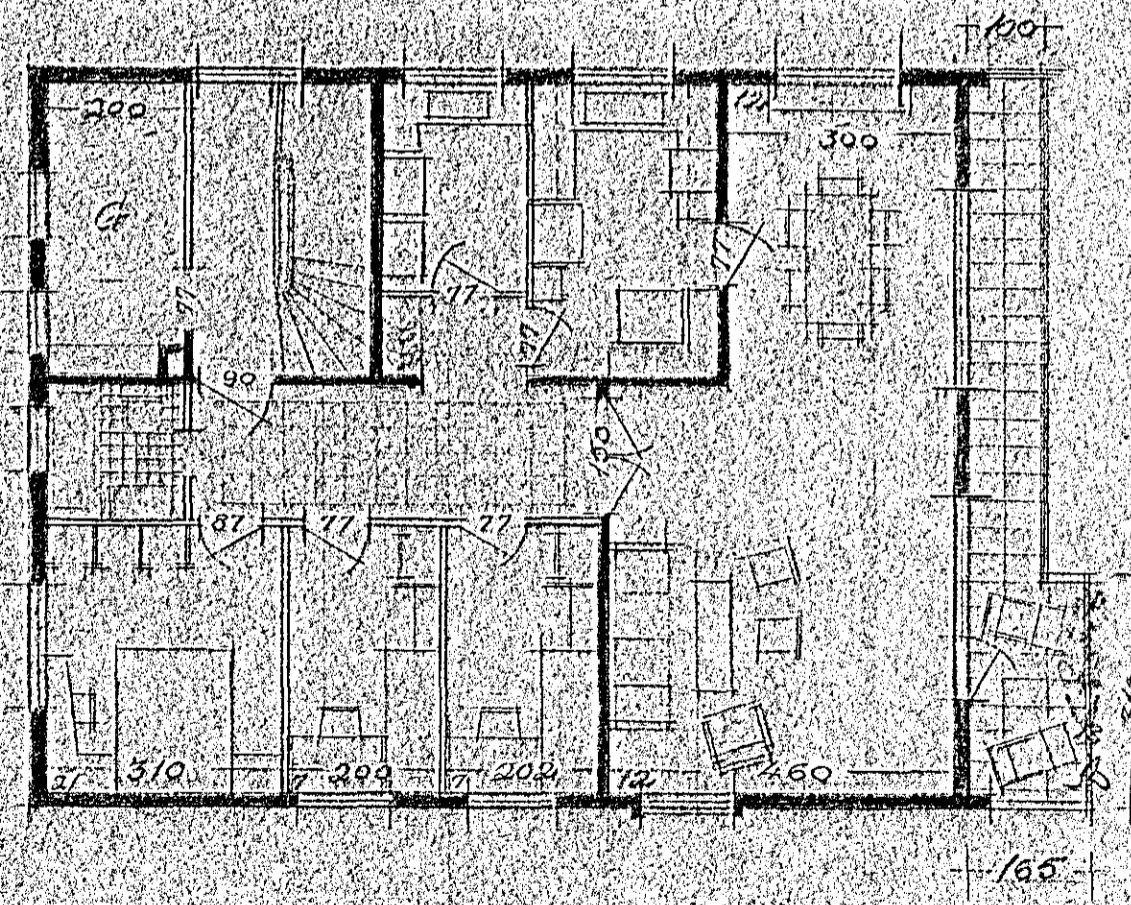


Sudvestri

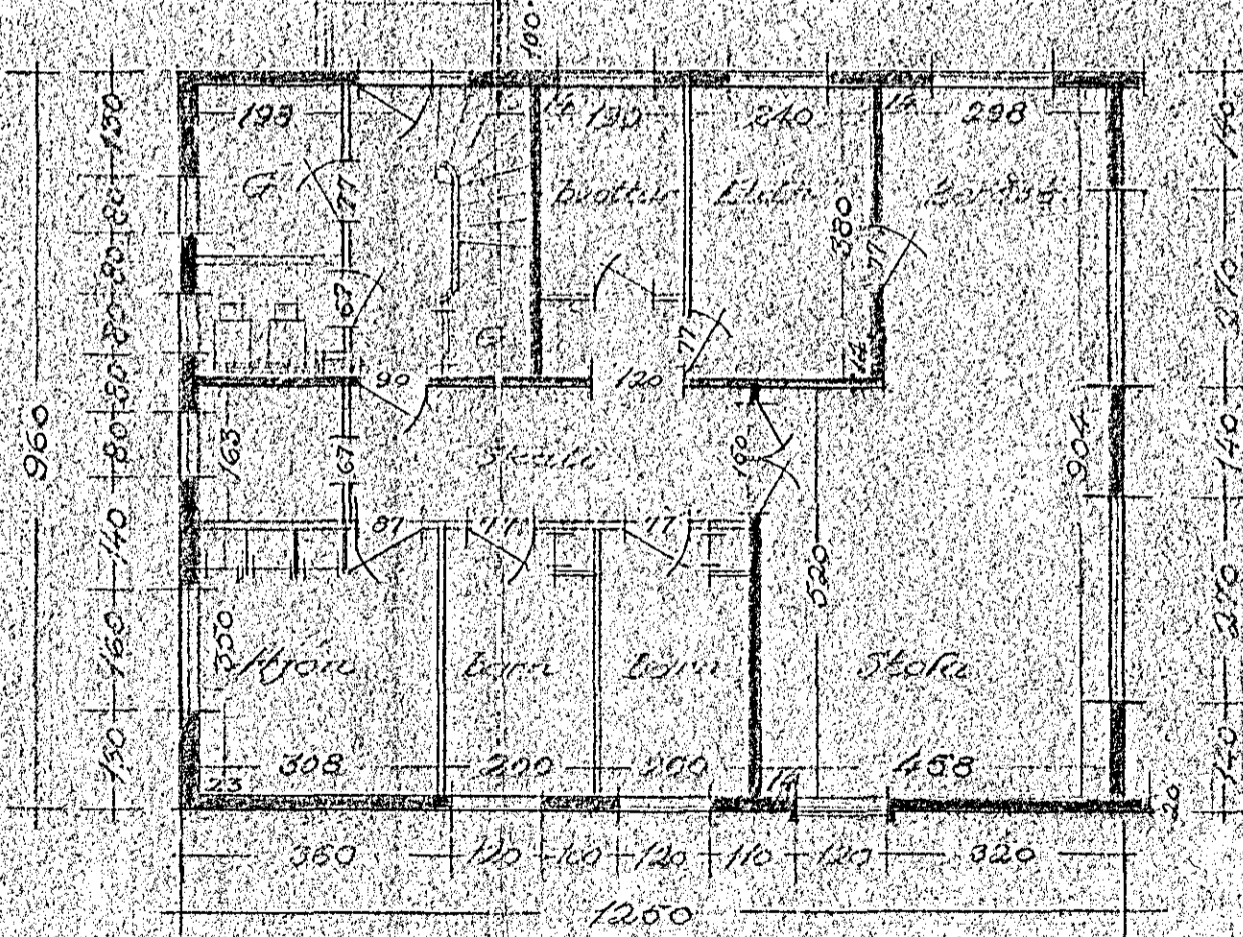
NV



Skemmdir

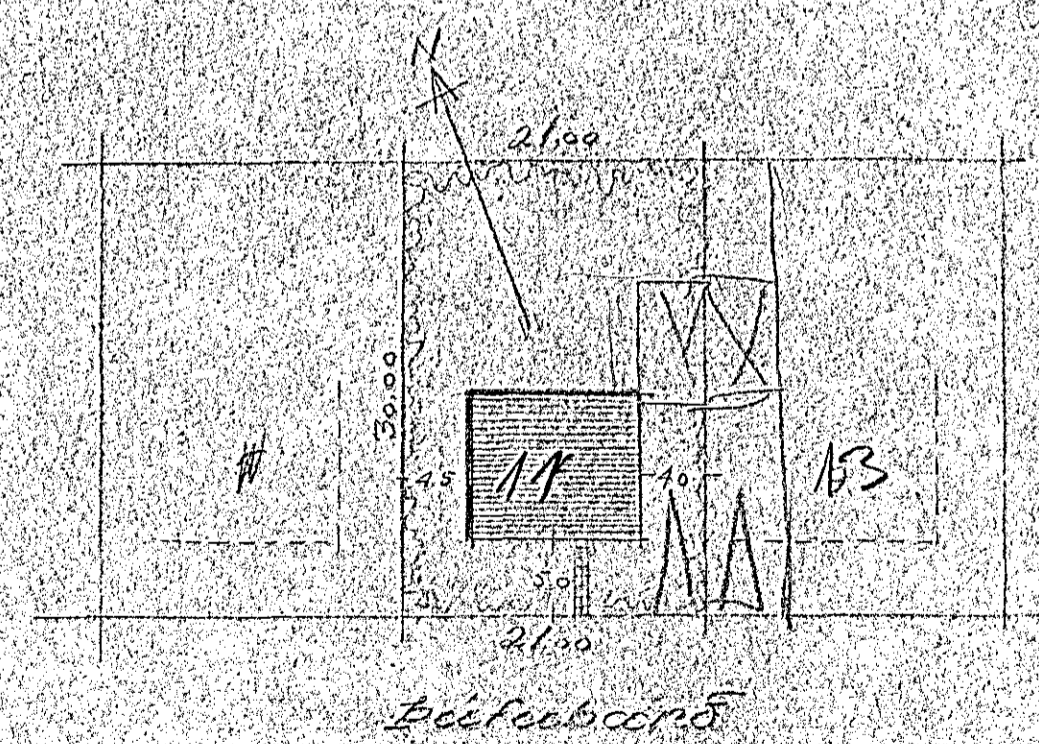


2. hæð



4. hæð

Afskið 1:500



Eilífubærinn

Reykjavík, 2. júní 1958  
Ólafur Stefánsson