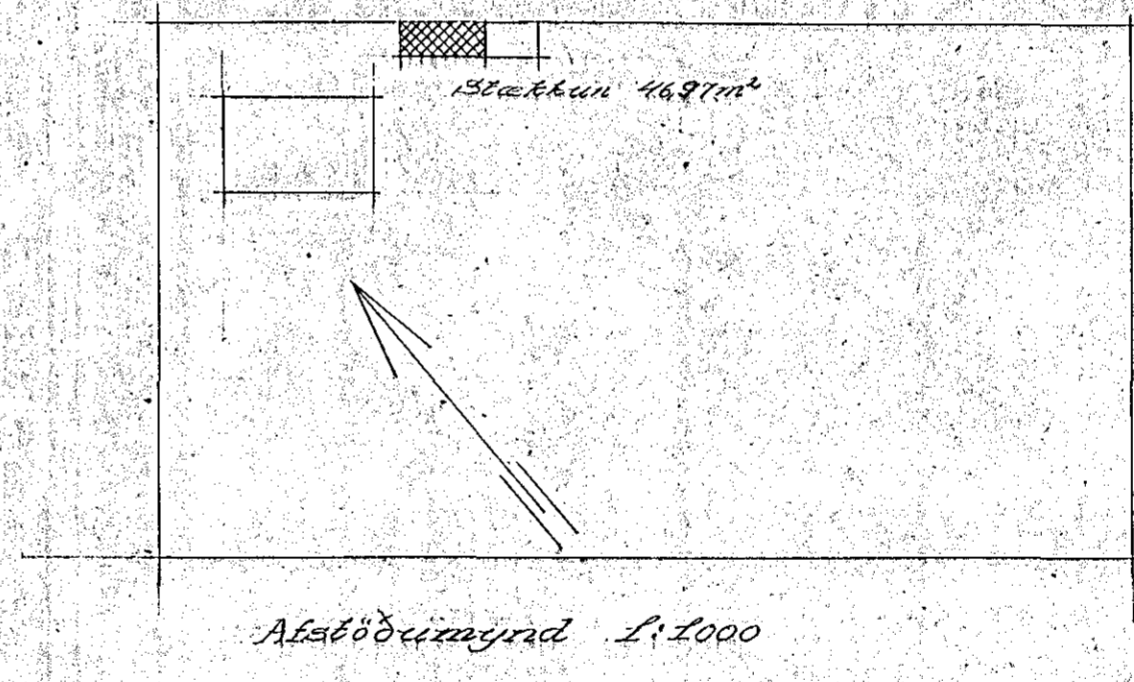
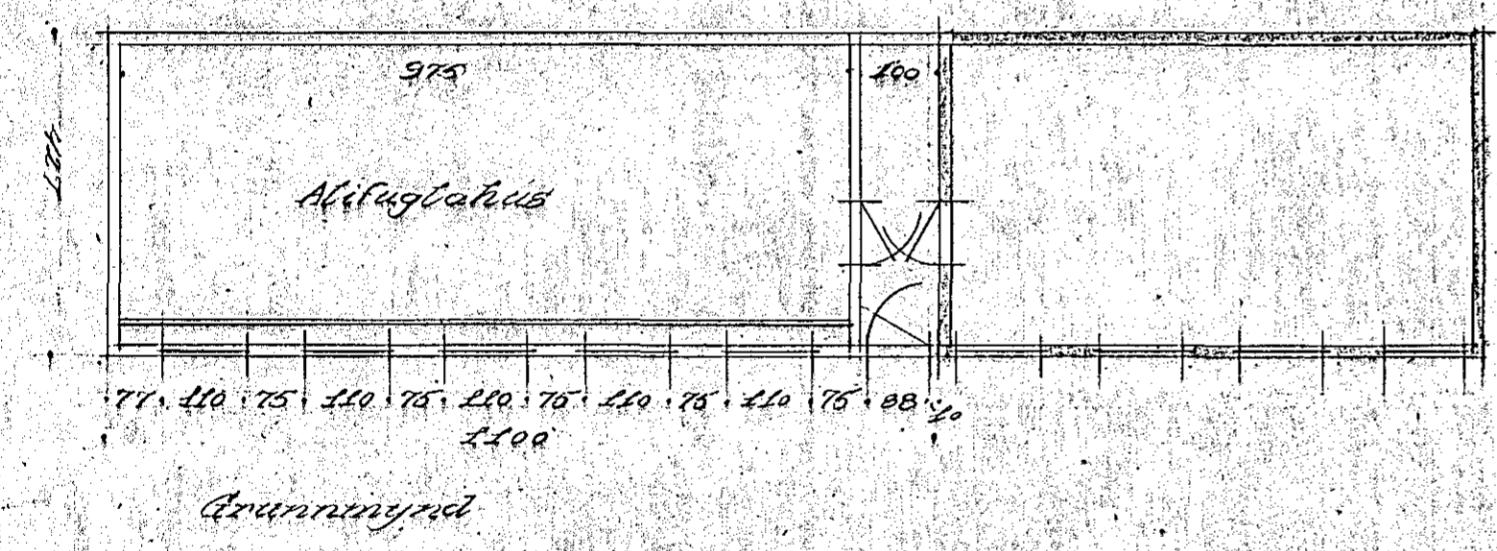
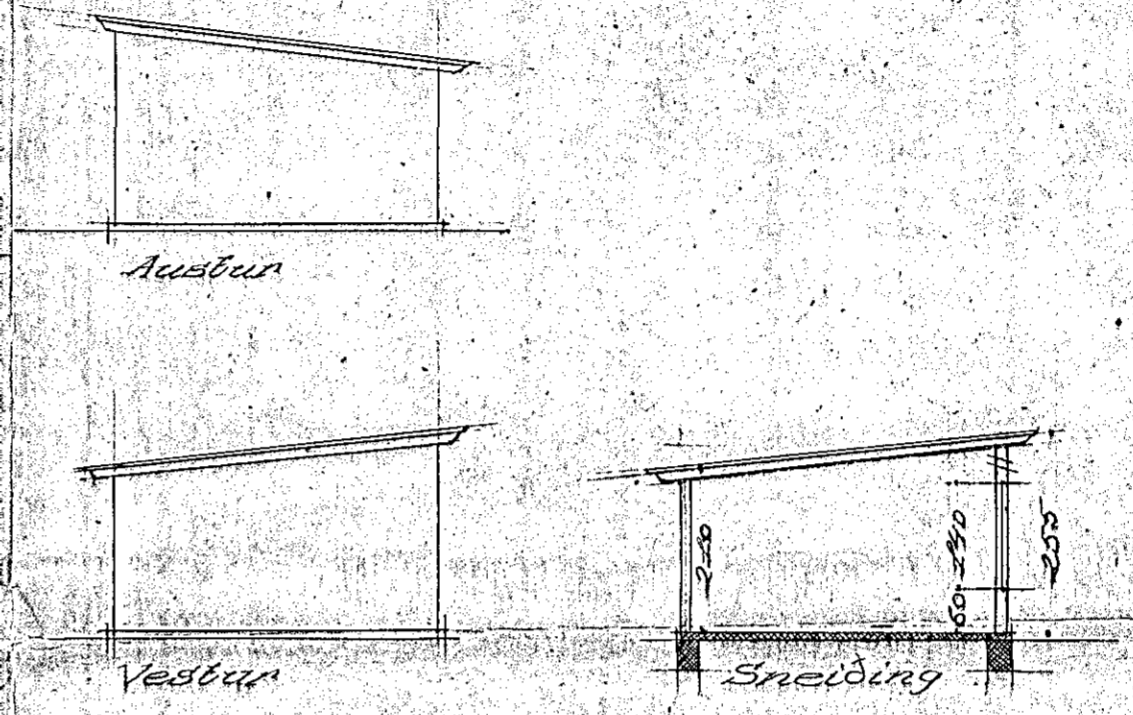
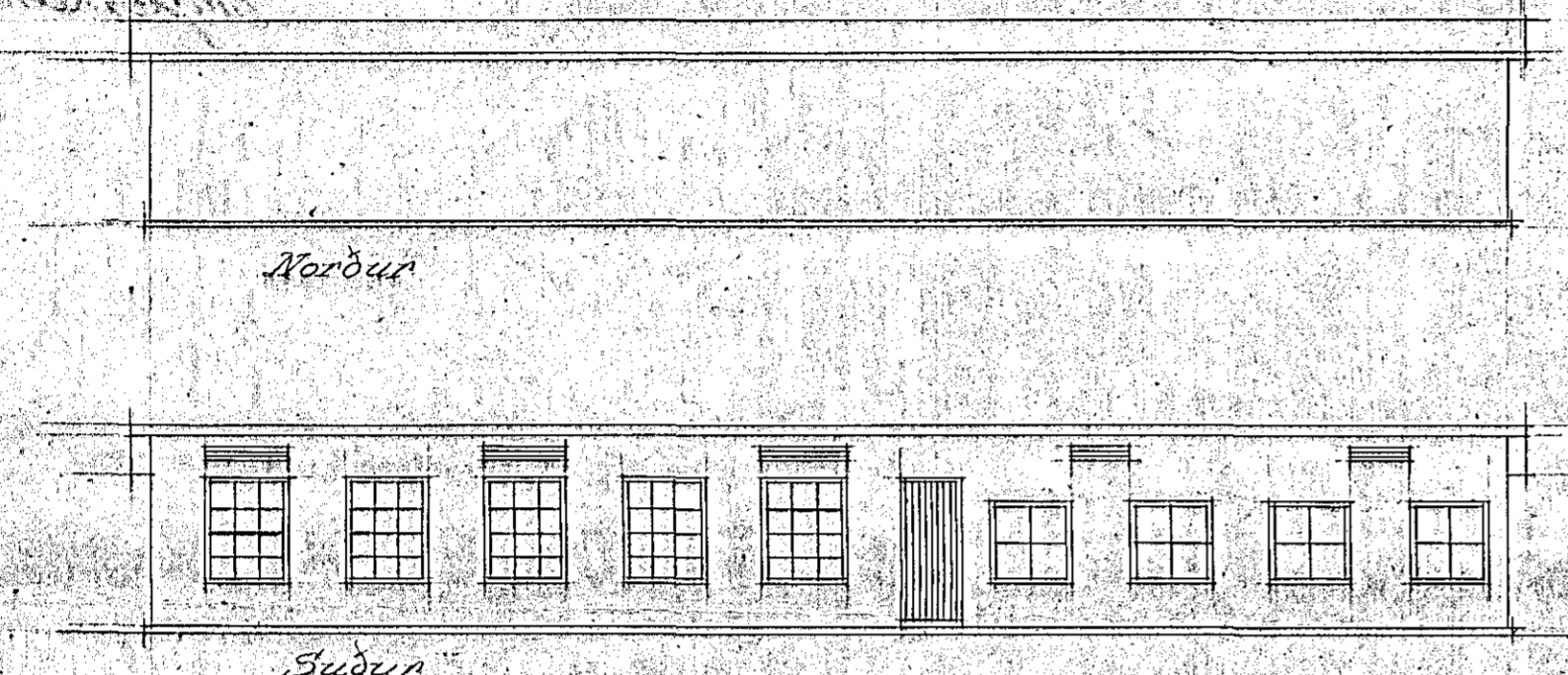


Nifuglahús, Stakkur  
 Eig. Karmelísystír Klaustrin.

8p. 10/8 '55

Handwritten notes in Icelandic, including "1000 m. í hvern 500 m. í hvern 1000 m." and "1000 m. í hvern 500 m. í hvern 1000 m."



Mafraknið 24-7-55  
 Stefan Sigurbjörnsson