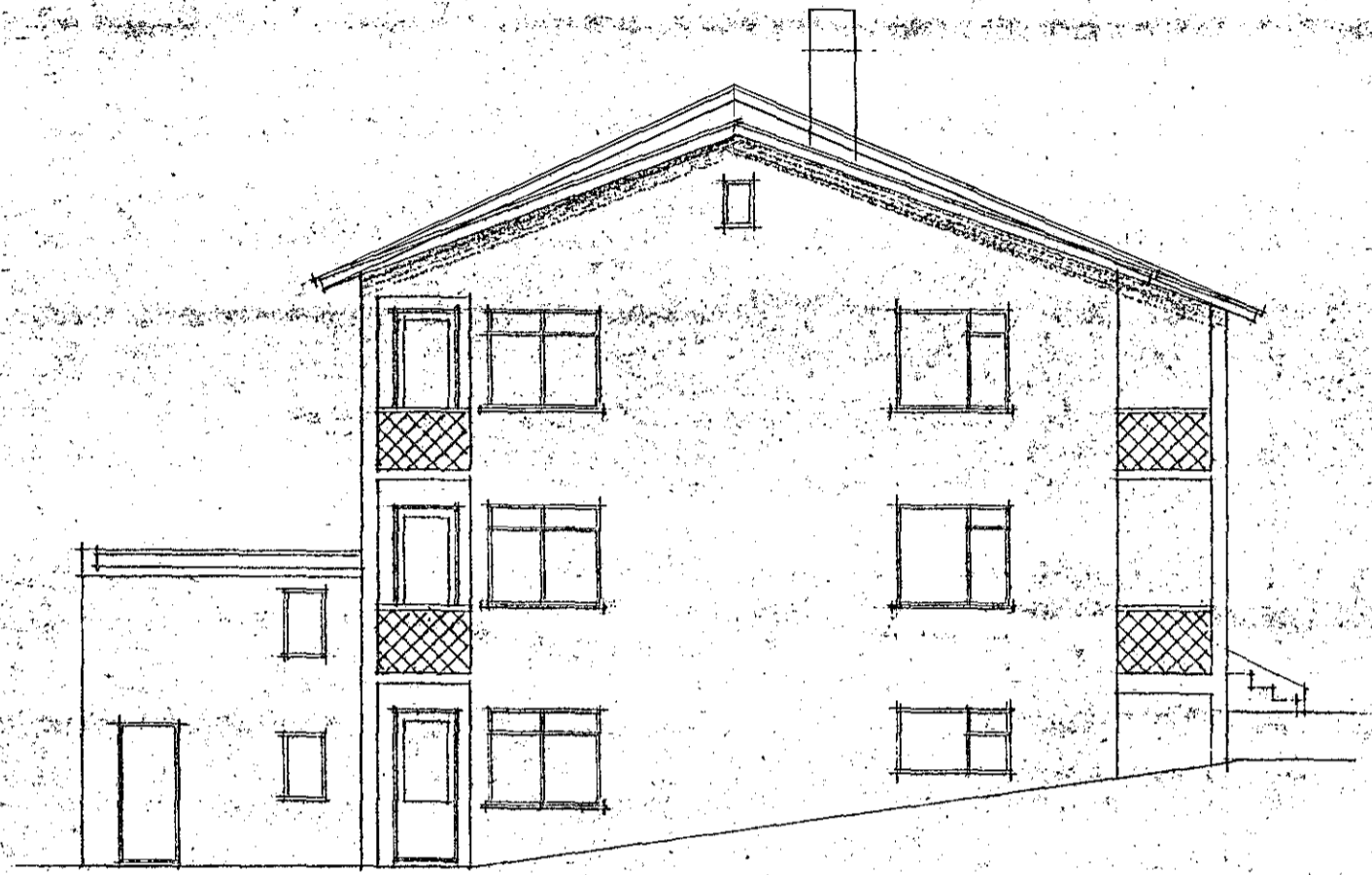


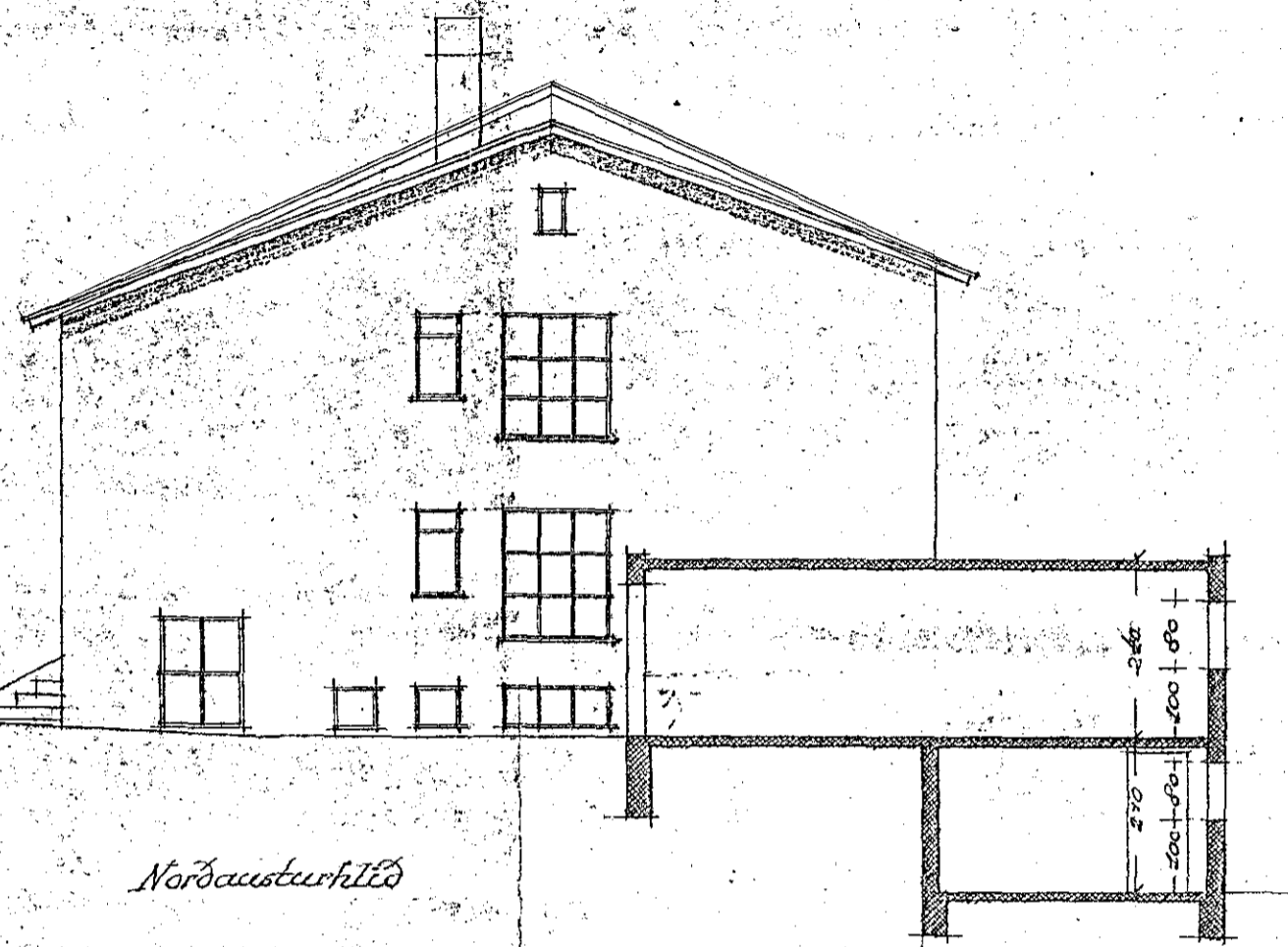
Hús Olafs Þinarssonar, leknis  
við Klaustarsveg nr. 40

Essa Þjundar

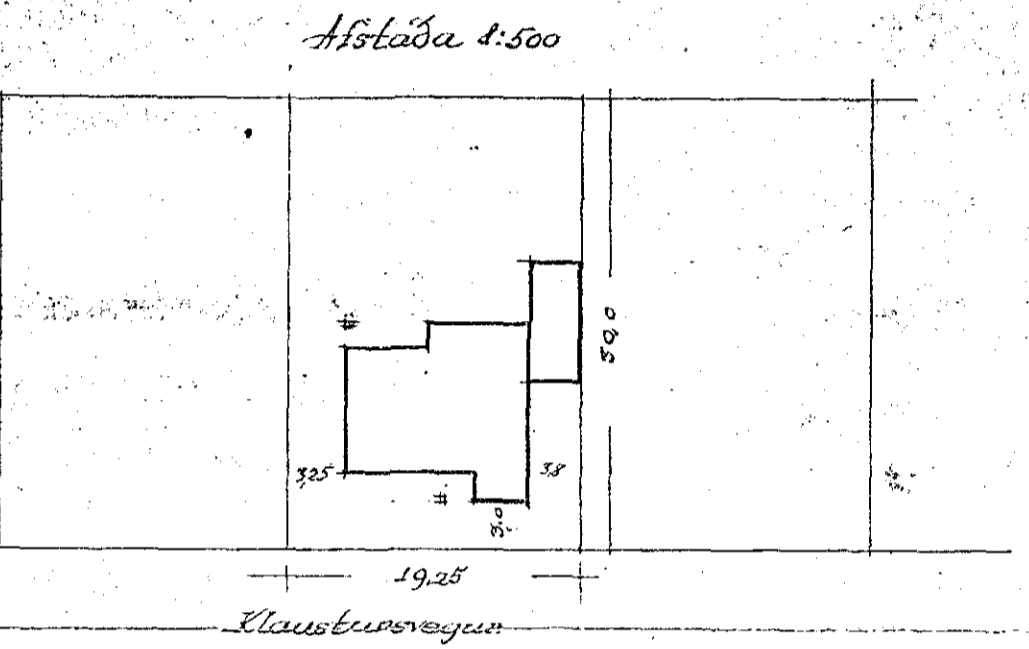
Þinnar Þundar



Suðvesturhléð



Norðausturhléð



Afstæða 1:500

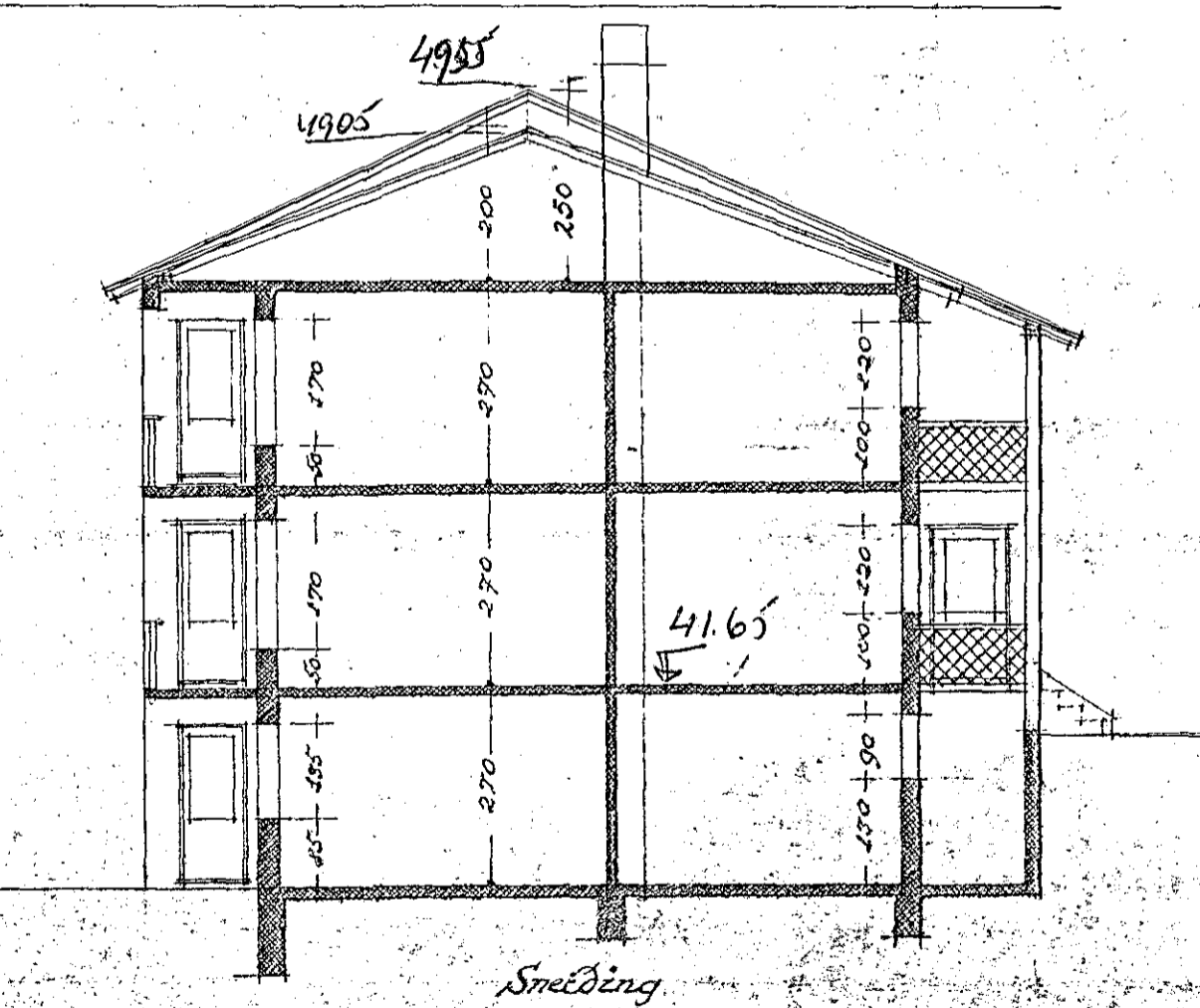
Klaustarsvegur



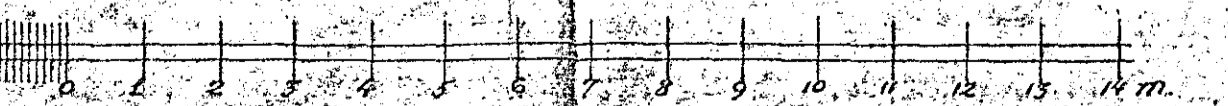
Norðvesturhléð



Óstæð



Sméðing



Reykjavík, í ágúst 1954  
Sigrún Halldórssón