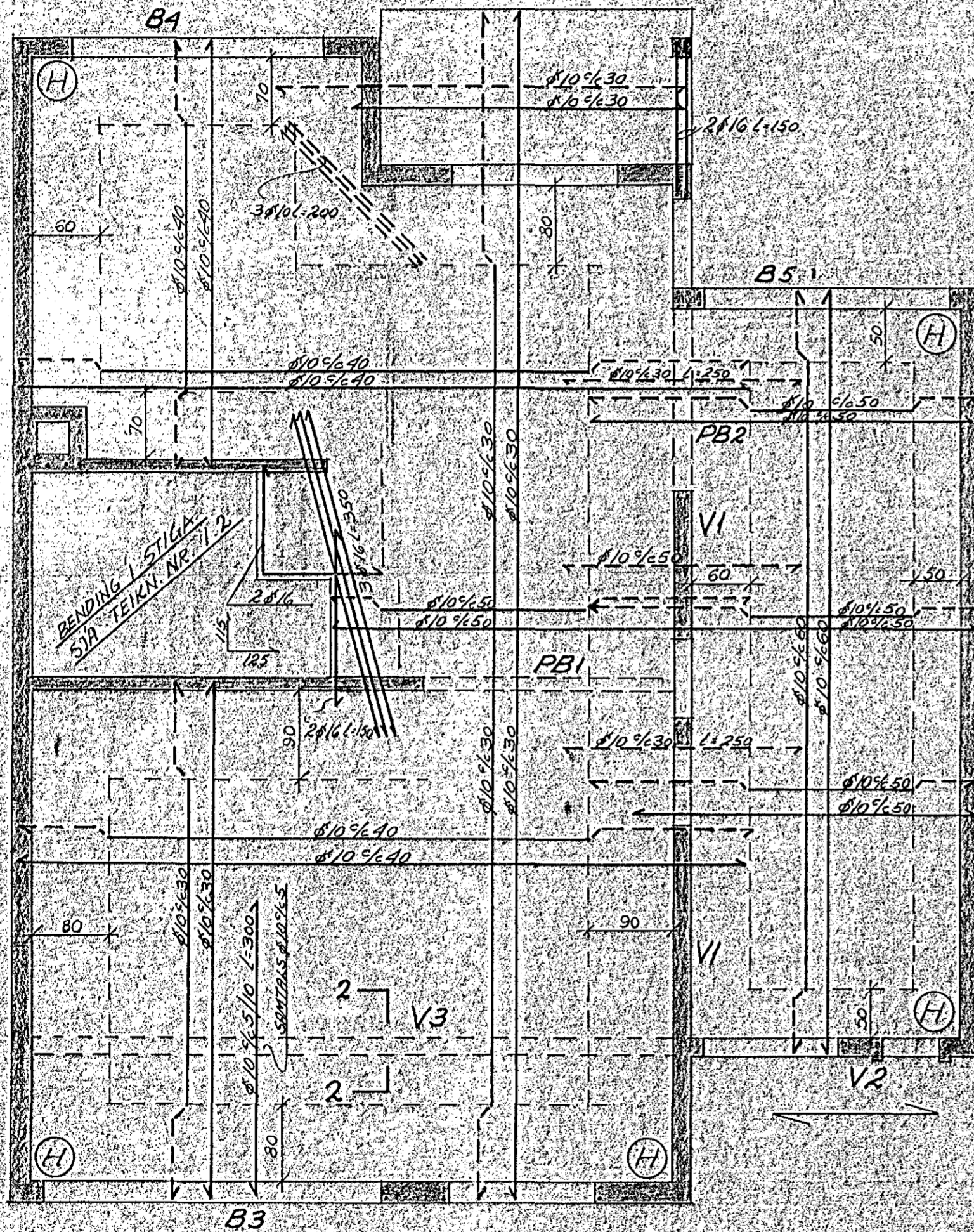
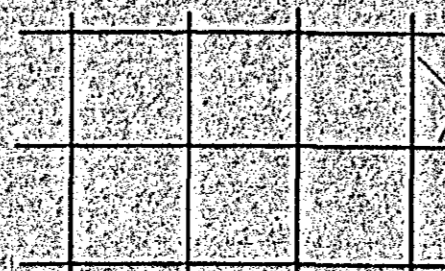


PLATA YFIR I. HÆÐ, GRUNNMYND 1:50



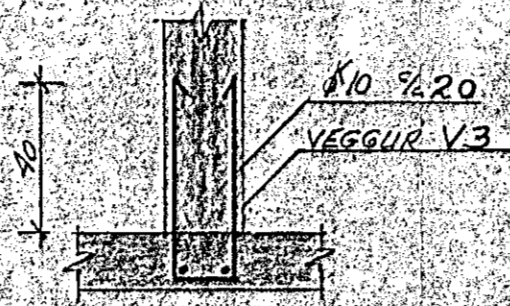
PLÖTUÞYKKT 15 sm.

VEGGIR V1, V2 OG V3

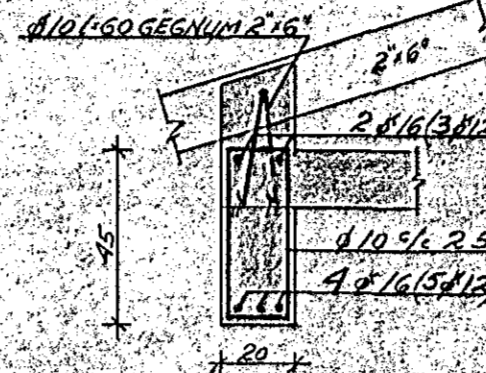


Ø10 1/2 30 # Í MIDJUM VEGG,
SJA ÞÁ SÉRMÝND AF
V3 HÉR AÐ OFAN OG JARN
MEÐFRAM ÖÐRUM VEGGJUM

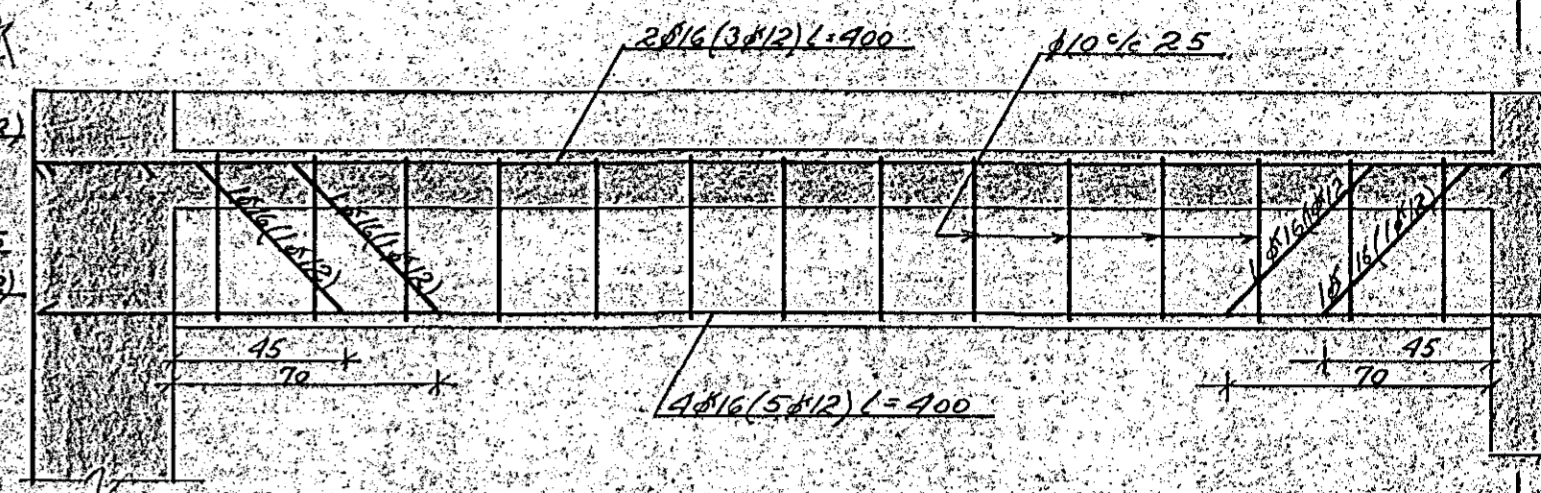
SNID 2-2 1:20



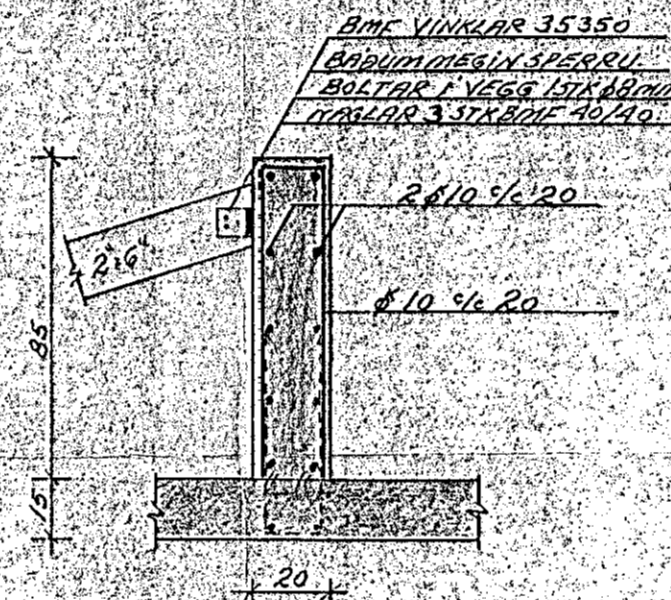
BITI B3 SNID 1:20



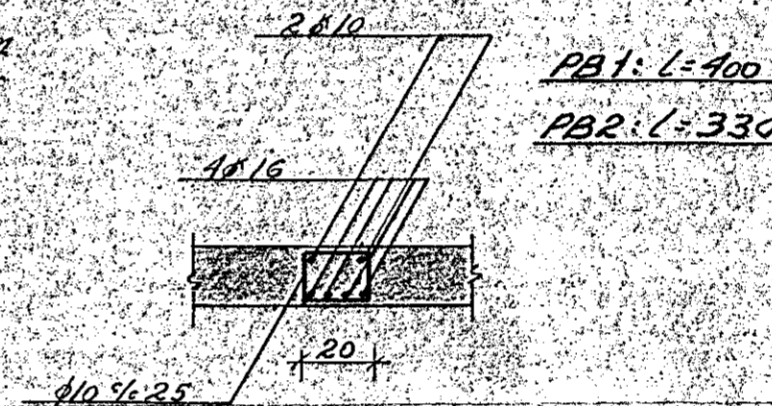
BITI B3 HLIDARMYND



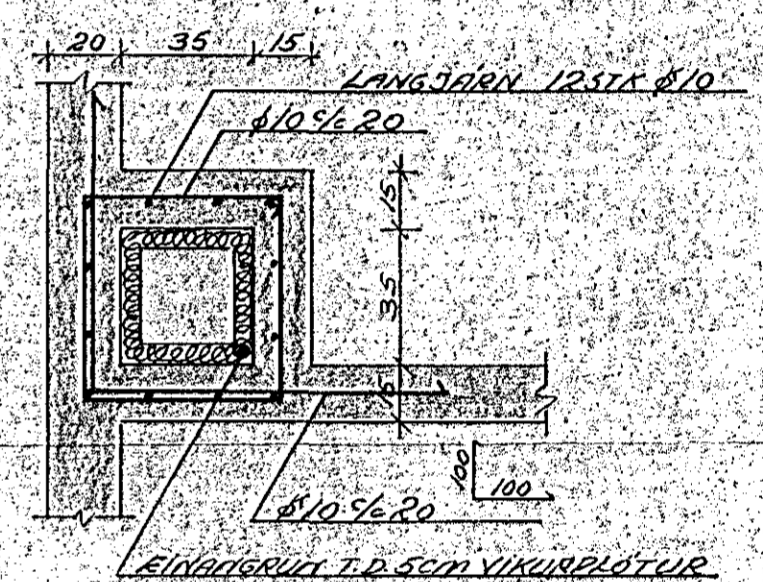
VEGGUR V3 UNDIR GLUGGUM 1:20



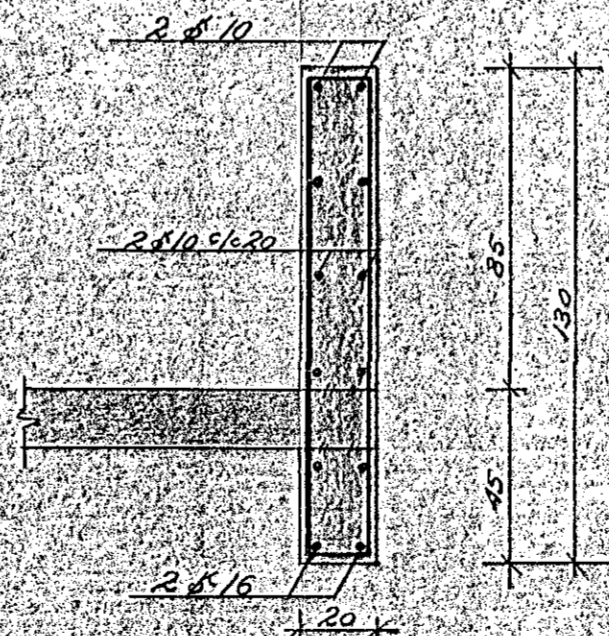
PLÖTUBITAR PB 1:20



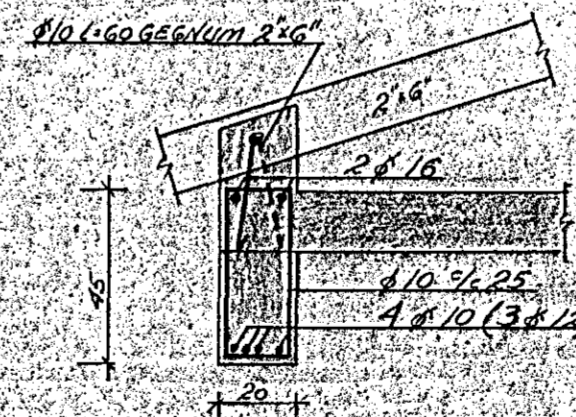
SKORSTEINN SNID 1:20



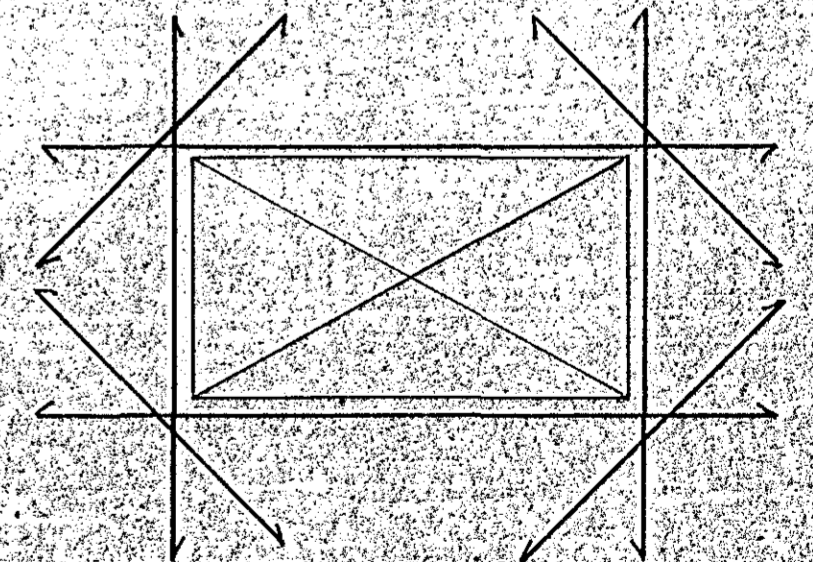
BITI B4 SNID 1:20



BITI B5 SNID 1:20



JARNALÖGN KRINGUM GLUGGA OG OP



ÖLL JARN ERU 2Ø10 OG NA' A.M.K. 50CM ÚT FYRIR ÖR JARN YFIR
GLUGGUM, SEM ERU 150-200 CM BREIÐIR, ERU 3Ø10
OG 200-300 CM BREIÐIR ERU 4Ø10



ÖLL STEYPA SE 5-200

ÖLDUSLÓÐ 39-47
HAFNARFIRÐI 47
MÁI 1982
JÄRN BENDING
PLATA YFIR I. HÆÐ
TEIKNING NR. 1.3.
REIKN. HAFNARFIRÐI
TR. HAFNARFIRÐI
HALLDÓR HANNESSON BYGGVERKFR.
GUNNARSSUNDI 10, HAFN. S. 53423