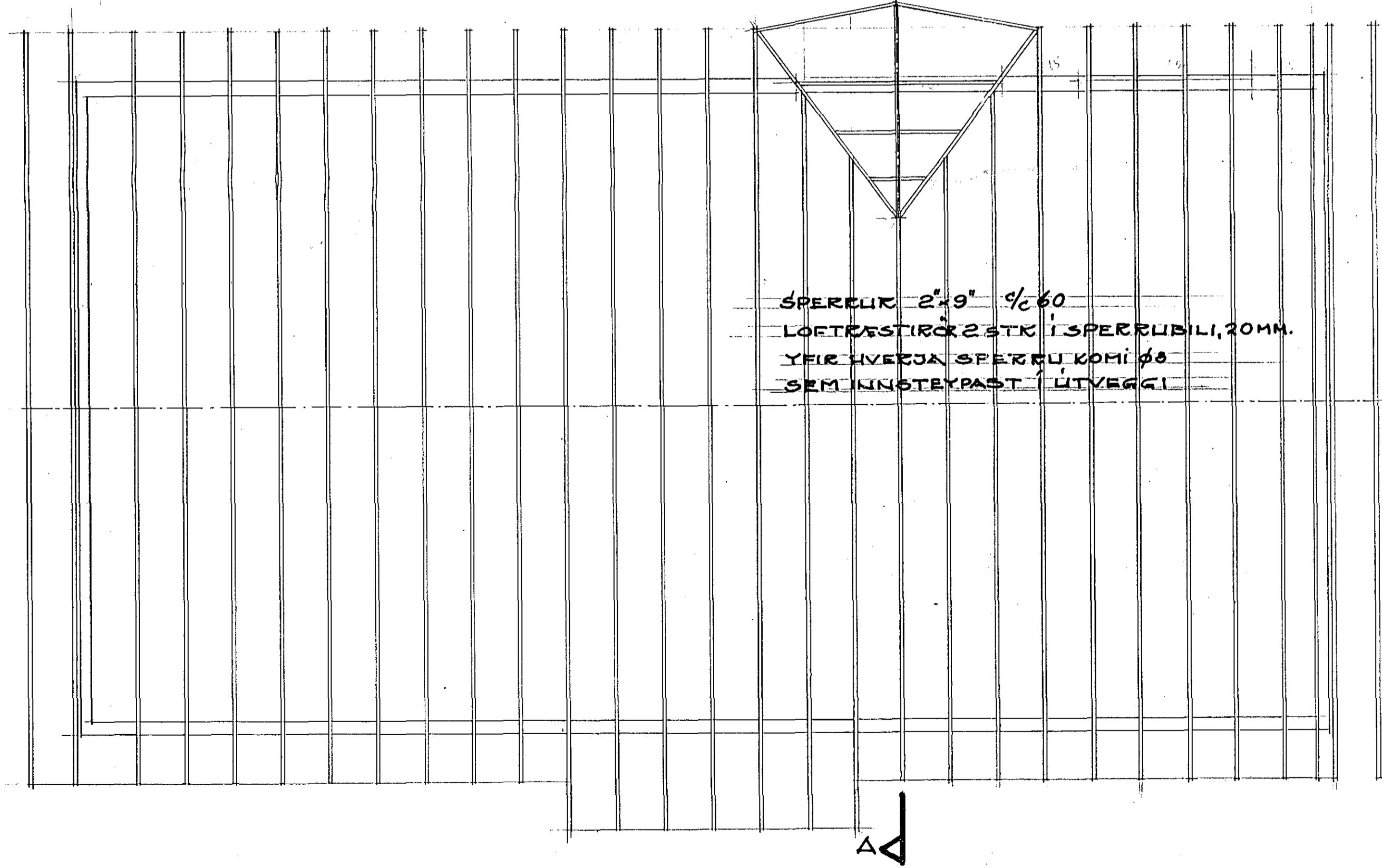
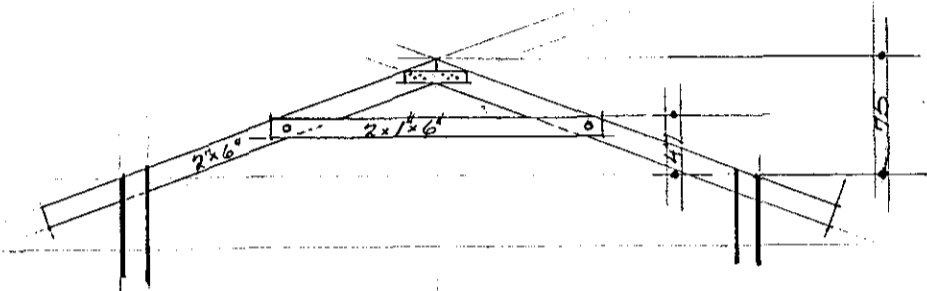


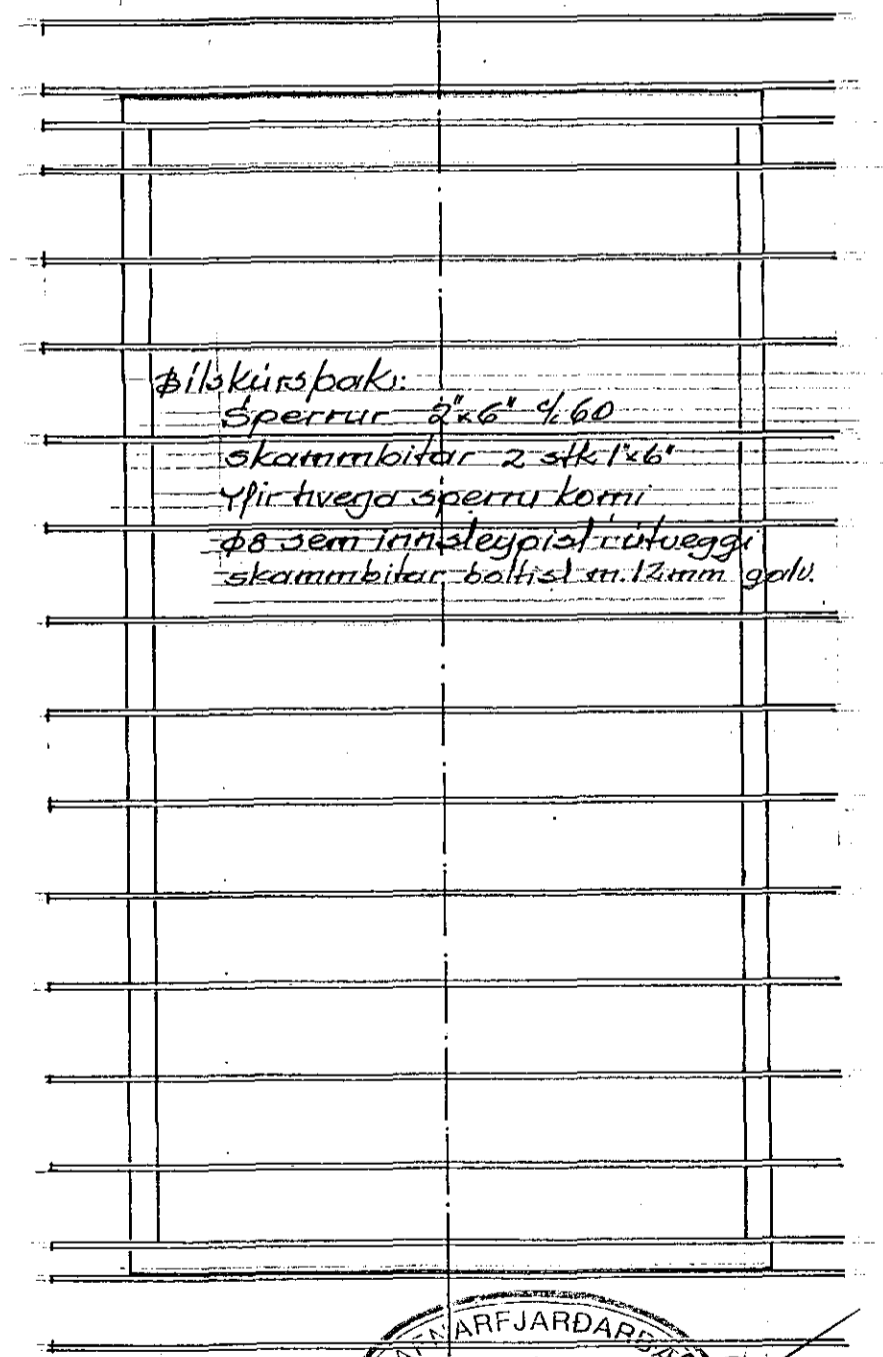
þakjárn.  
 pappi  
 1" klæðning  
 20-25mm loftbil.  
 vindpappi  
 sperrur 2x9" einangrun 20cm steinull.  
 0,2mm plastdúkur.  
 35mm afreitingargrind  
 loftaklæðning  
 plasthór 20mm. 2stk í hvergu sperrubili  
 járn  $\phi$  8 yfir sperrur, innsteyp.

Skammbitar 2x2x6 heflad  
 Boltar 15mm galu nota skal 2mm skinnur  
 bæjja megin  $\phi$  50mm og "bulldog" járn 2stk pr boltar.  
 gataplötur 2mm 100x300 galu. tregl. 4x5 stk 1/40 kam.  
 Kvistmænic og sperrur 2x6"

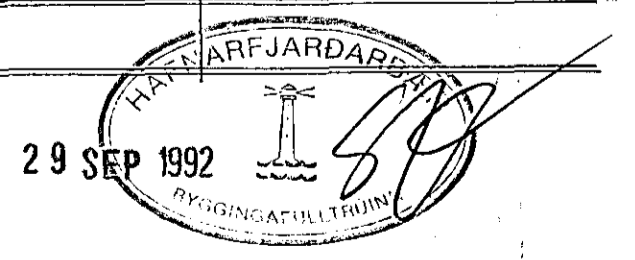
SKURÐUR  $\Delta$ - $\Delta$  1:20



SPERRUR 2x9" 1/2 60  
 LOFTRÆSTIRÖR 2 STK Í SPERRUBILI, 20MM.  
 YFIR HVERJA SPERRU KOMI  $\phi$  8  
 SEM INNSTEYPAST Í LITVEGGI



Þilskúrsþak:  
 Sperrur 2x6" 1/2 60  
 Skammbitar 2 stk 1x6"  
 Yfir hverja sperru komi  
 $\phi$  8 sem innsteypast í litveggi  
 skammbitar boltast m. 12mm golu



<b>STEINAHLÍÐ 7 HAFNARFIRÐI</b>			
			ÞAKVIEKI
Baldurinn Ólafsson	1:50/1:80	sept '98	04.