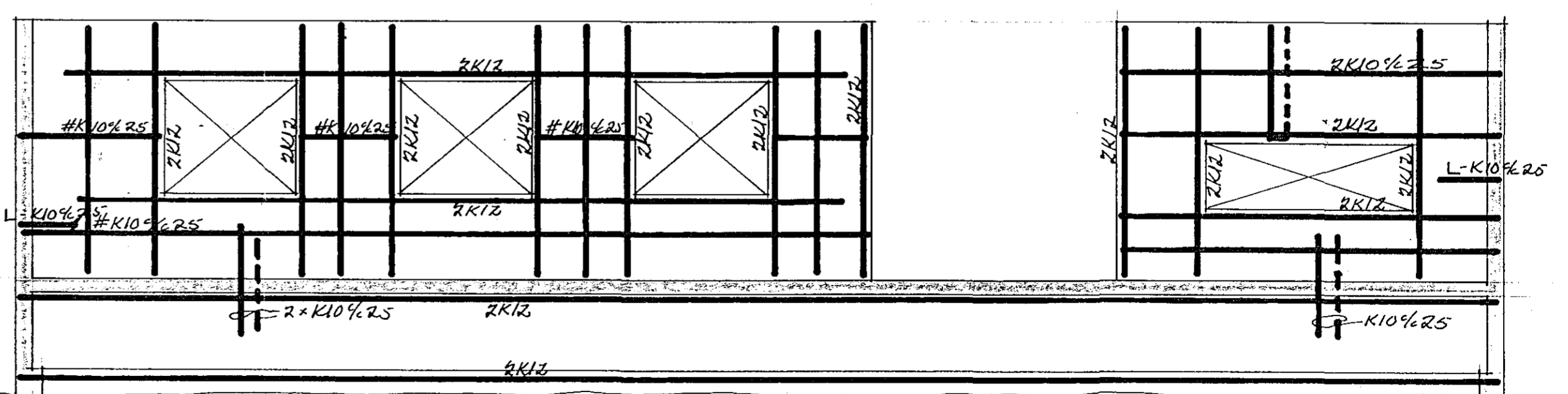
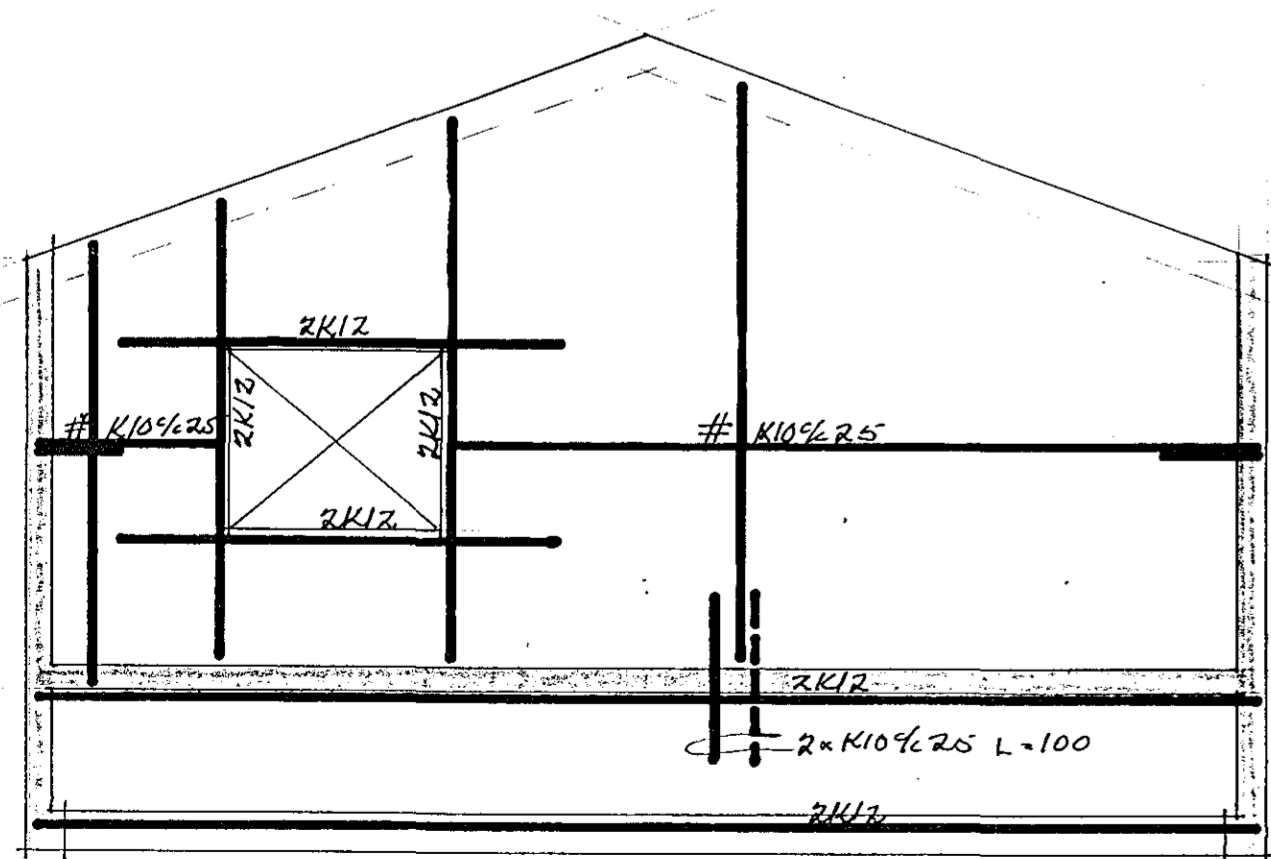
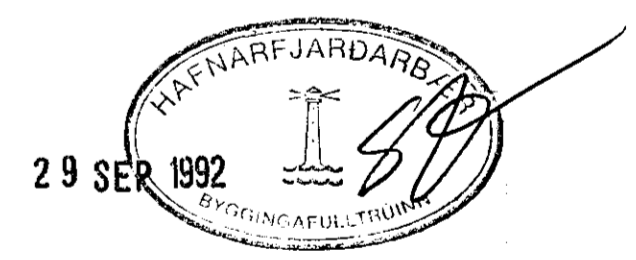


Í vegg bílskúrs komi einfalt net K10%25 og 2K12 um 811 op
 Skeytilegd allra járna sé a.m.k. $\phi=45$
 Steypa í öllum útveggjum $\beta=250$



Stanchild 7.			
Lagifn. Antónsson M.B.F.		JARN Í ÚTVEGGJUM.	
Þóðinn Einarsson M.B.F.			
B. E. III	1:50 sept 1992	03.	