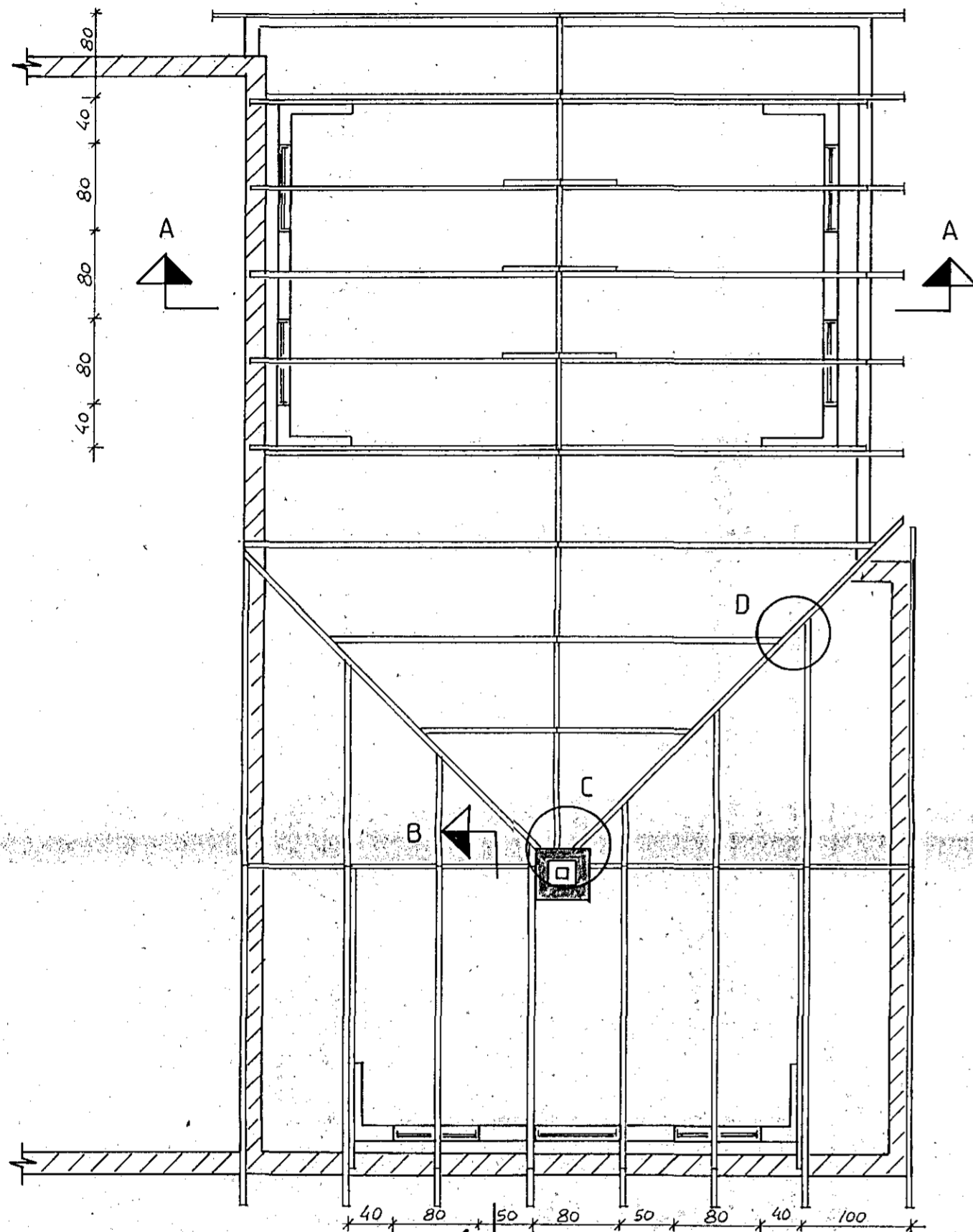
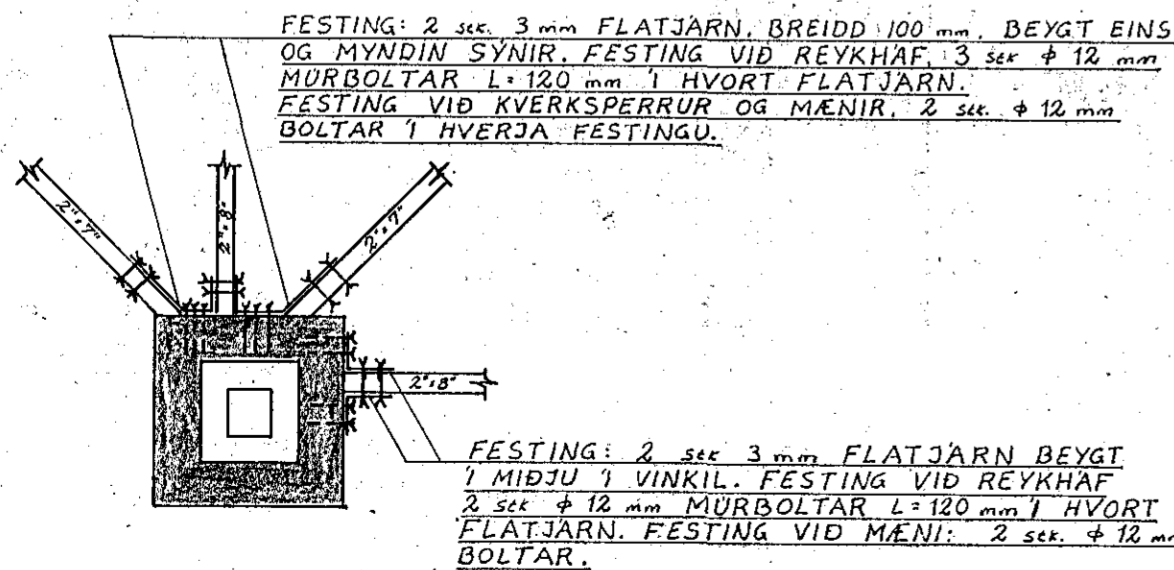


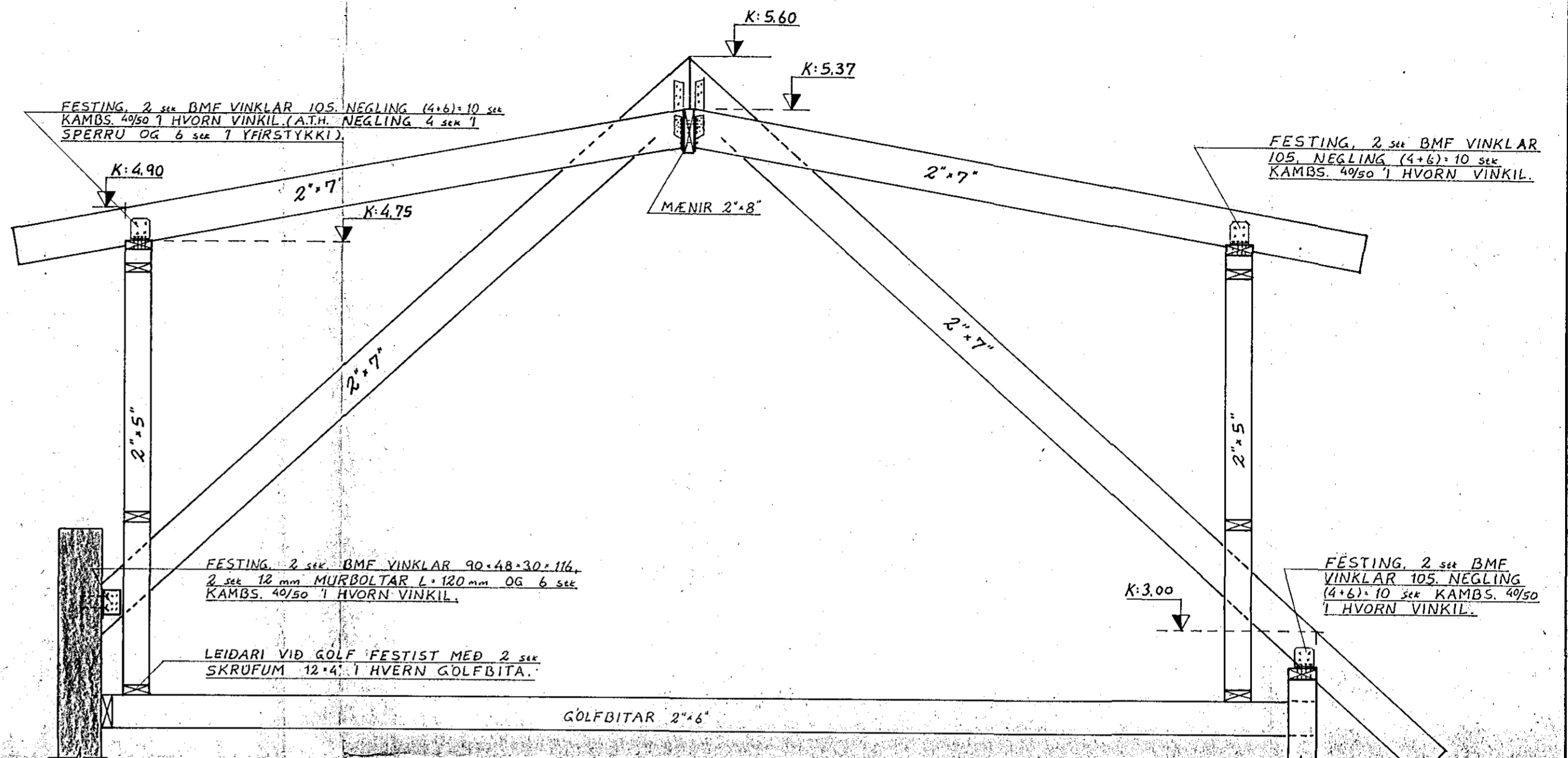
GRUNNMYND ÞAKS 1:50



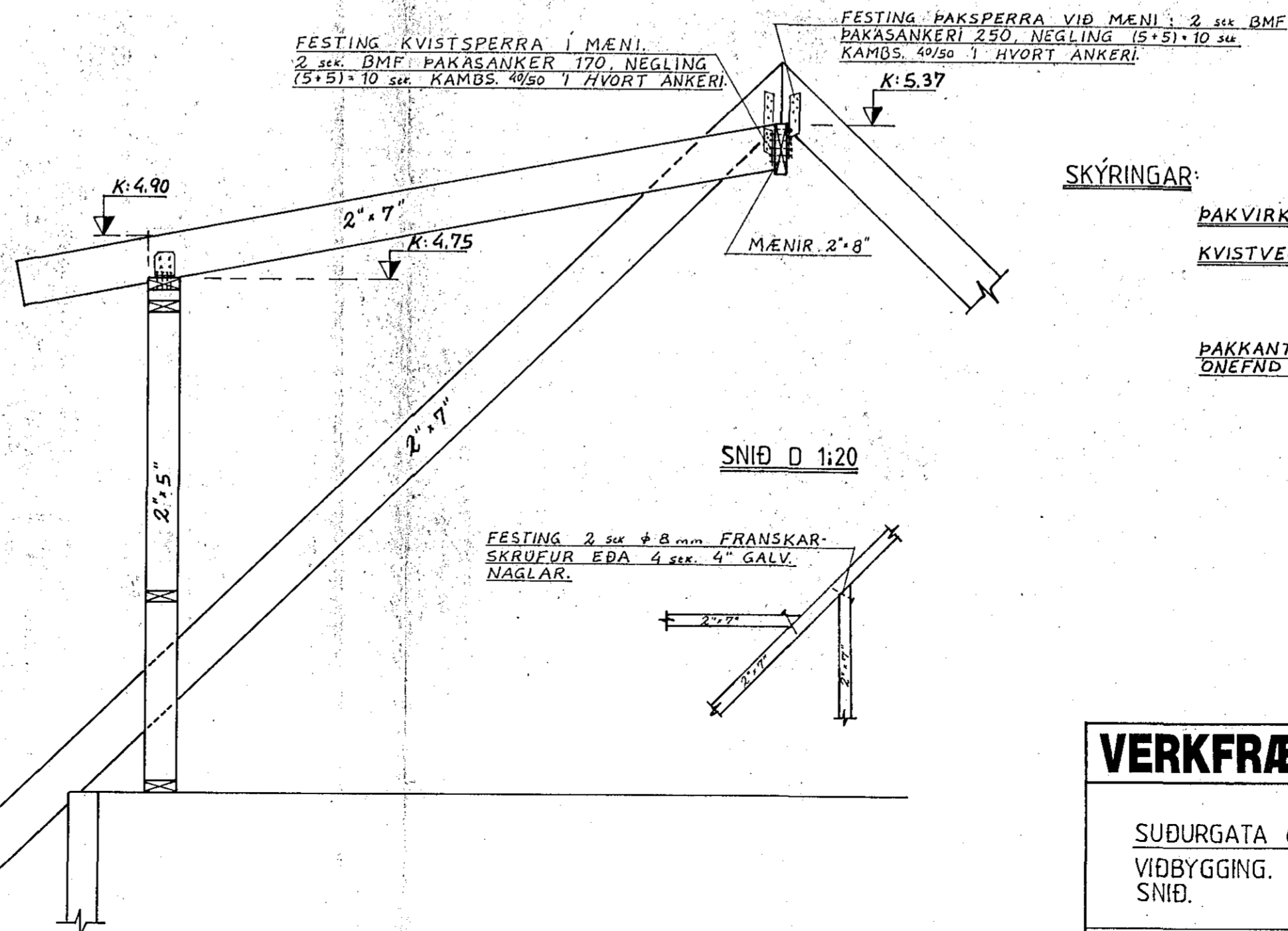
SNÍÐ C 1:20



SNÍÐ A-A 1:20



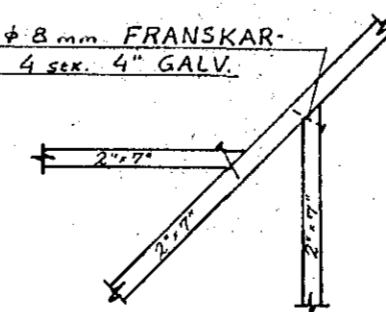
SNÍÐ B-B 1:20



SKÝRINGAR:

- ÞAKVIRKI: MÆNAR 2"x8", SPERRUR 2"x7" $\frac{1}{2}$ 75-85.
- KVISTVEGGIR: GRIND 2"x5" $\frac{1}{2}$ 40-60.
- ALLAR FESTINGAR Í GRIND, NEMA Á LAUSHOLTUM, ERU 2 stk. BMF VINKLAR 35350, NEGLING 7 stk. KAMBS. 40/50.
- ÞAKKANTAR SJÁ SÉRTEIKNINGU ARKITEKTS. ÖNEFND MÁL ERU 1 cm.

SNÍÐ D 1:20



VERKFRÆÐISTOFA HALLDÓRS HANNESSONAR S. 91-54355
SUDURGÖTU 14 - 220 HAFNARFJÖRDUR

SUDURGATA 67 HAFNARFIRÐI
VIÐBYGGING, ÞAKVIRKI GRUNNMYND OG SNÍÐ.

Mkv: 1:50, 1:20
Reiknað: *S. B.*
Teiknað: *S. B.*
Yfirfarið: *P.P.*

Verk: Blað nr: 1.3 Dags: Október '87