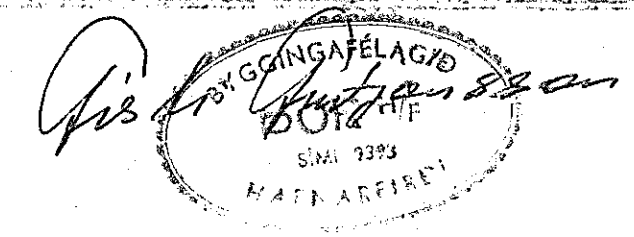


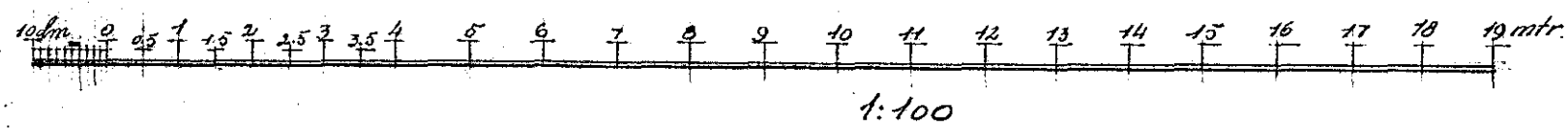
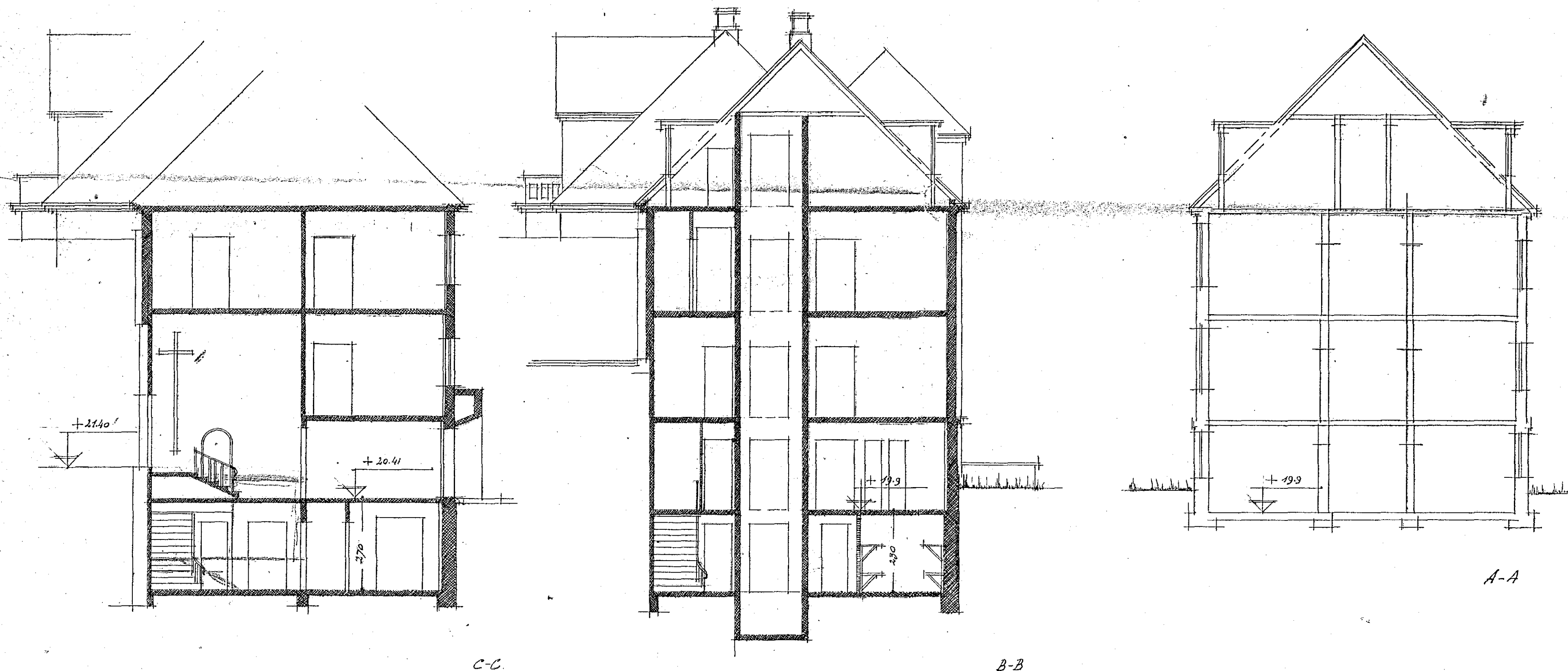
ST. JOSEPHS SPITALI HAFNARE.

VIÐBYGGING. *Smíðingur 1:100*



*Áh. Lofhæðir, aðrar en þær sem sýndar eru skv. hæðarpunktum skal mæta við gólfhæðir gamla húsnæðis.*

*Blad nr. 6.*



*Lösmálferti í jan'54  
Sigrún Guðmundsdóttir*