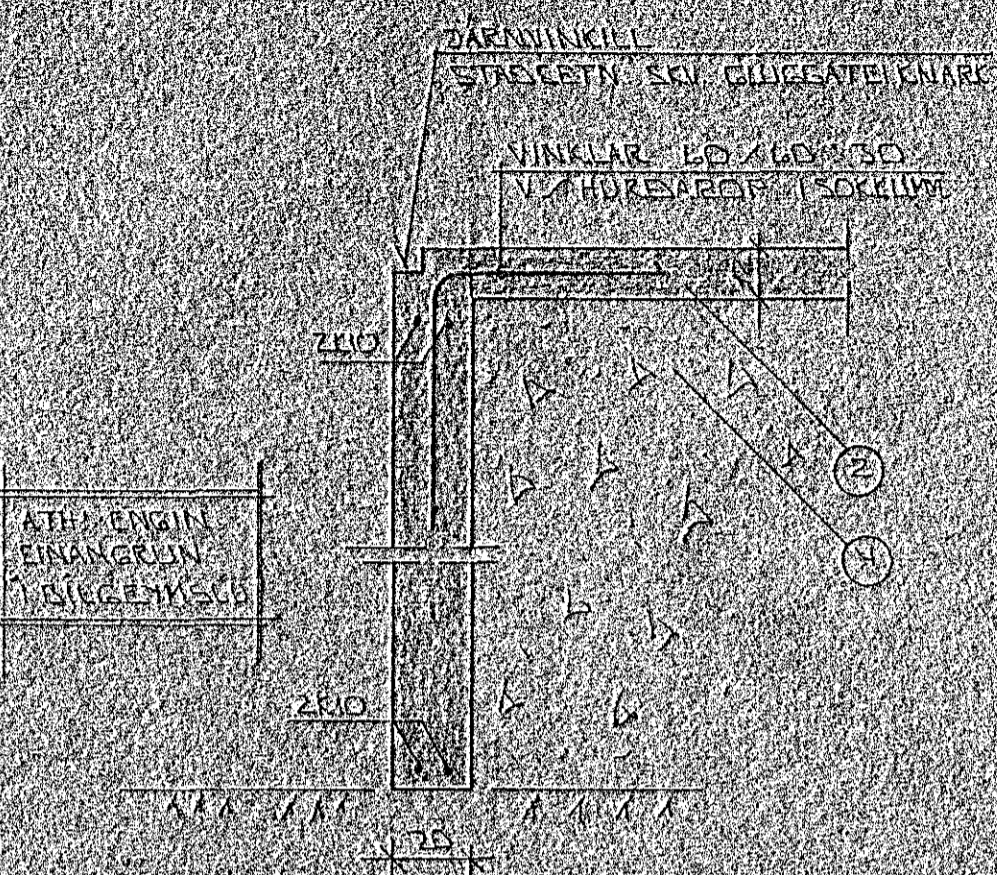
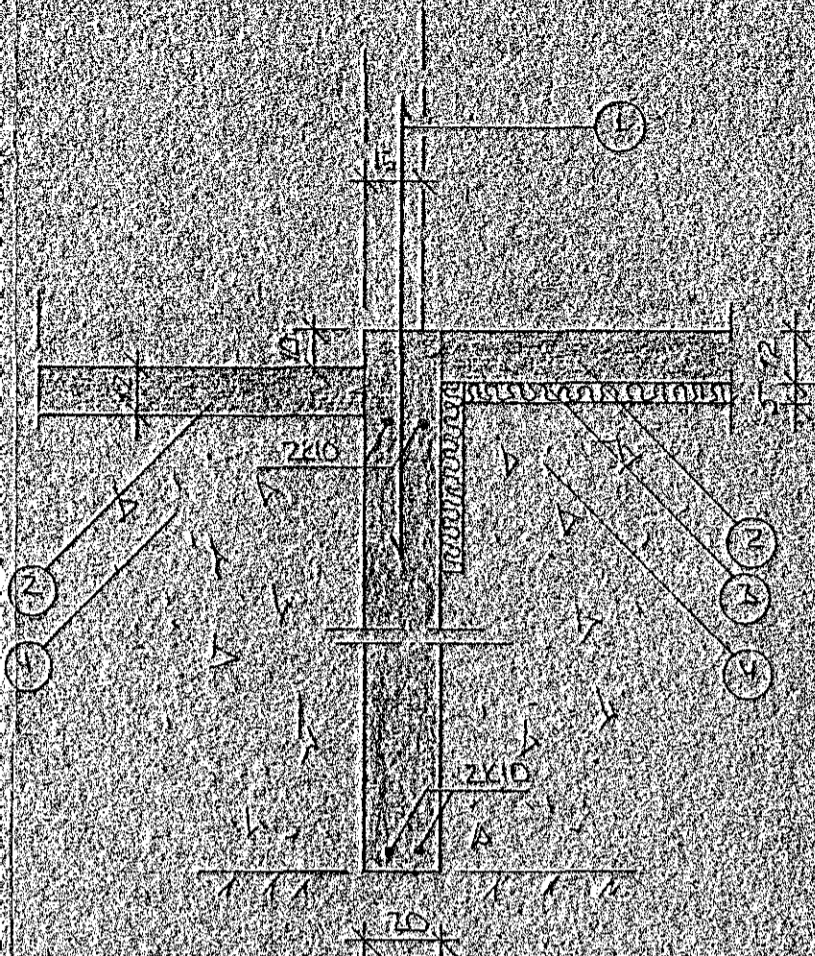


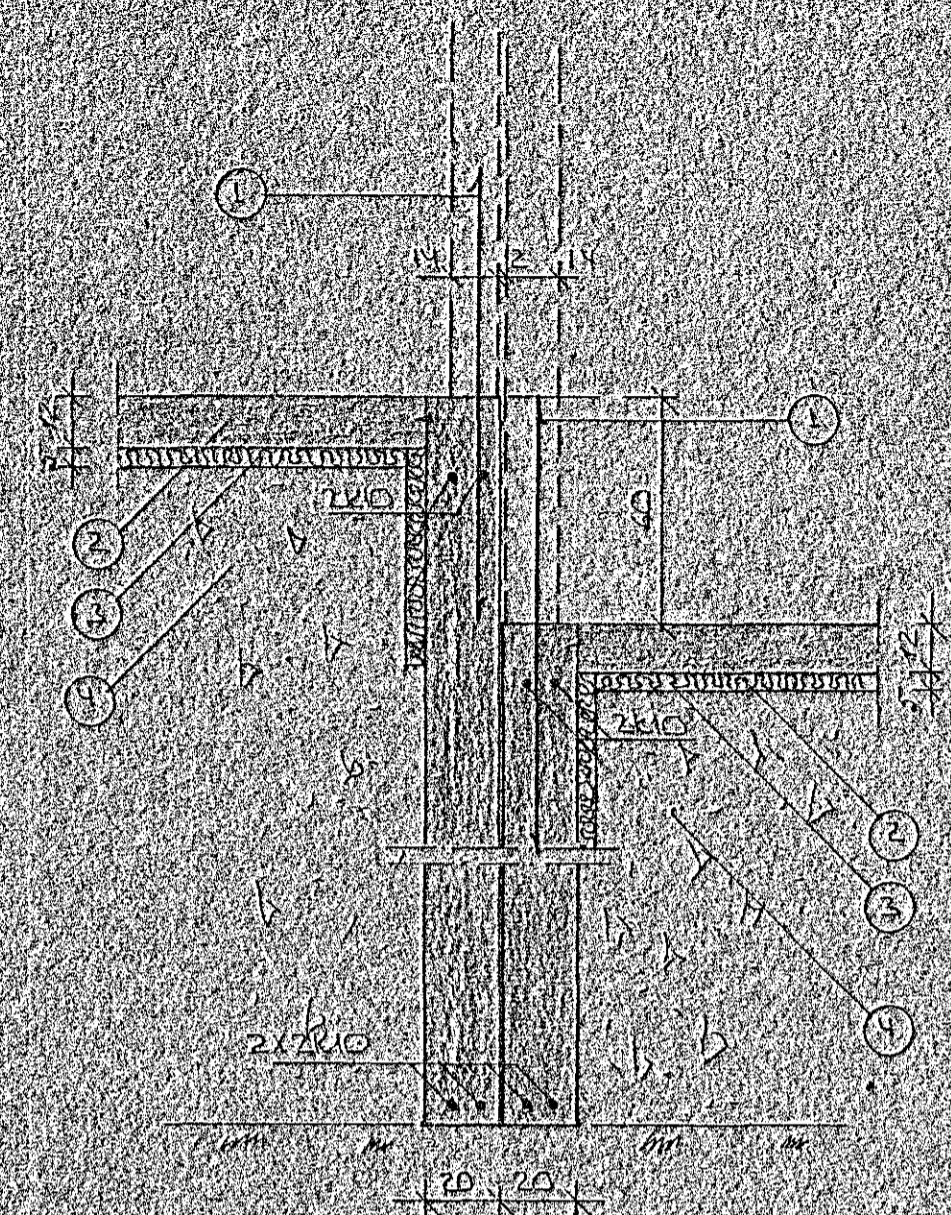
SNID 1:1:20



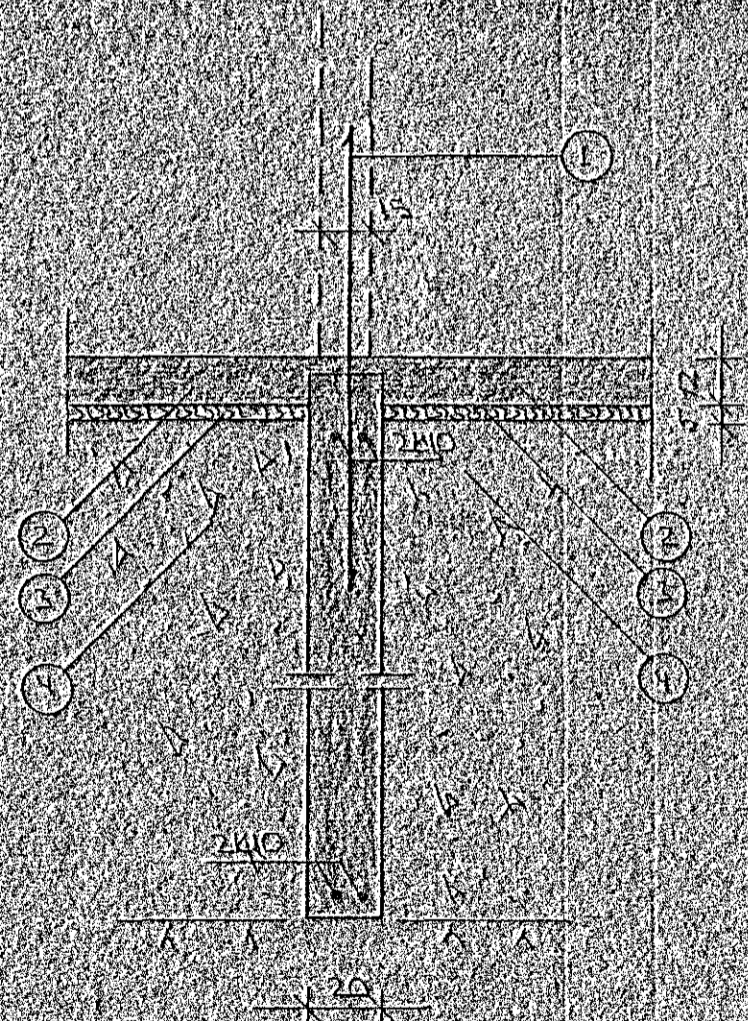
SNID 2:1:20



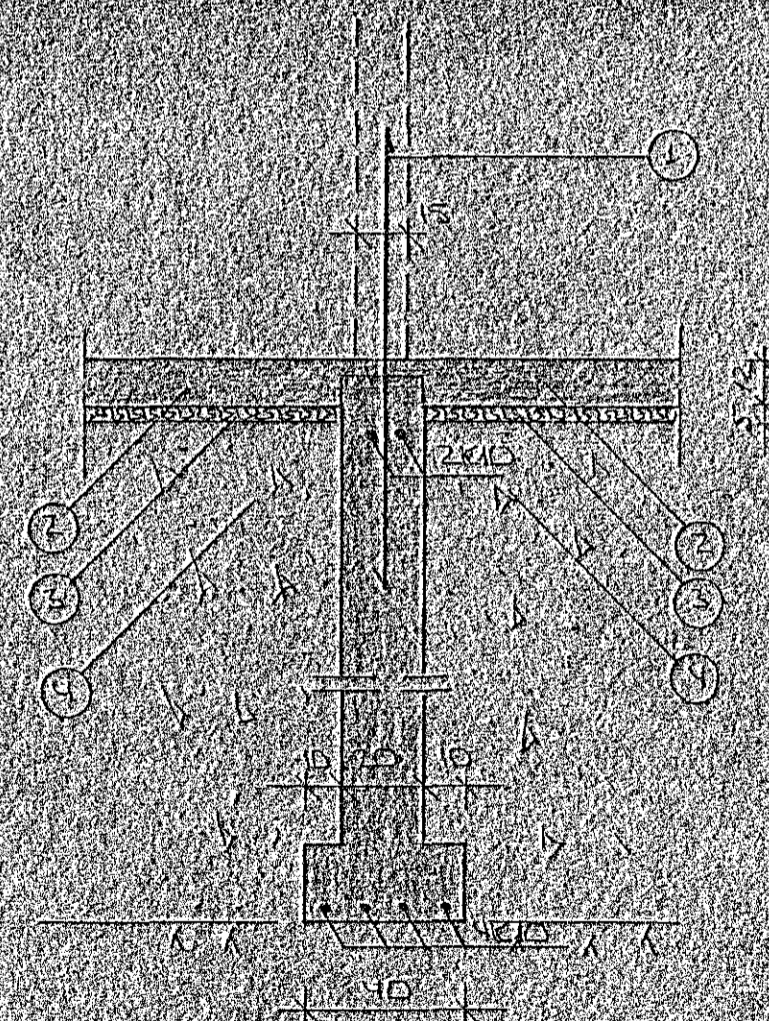
SNID 5:1:20



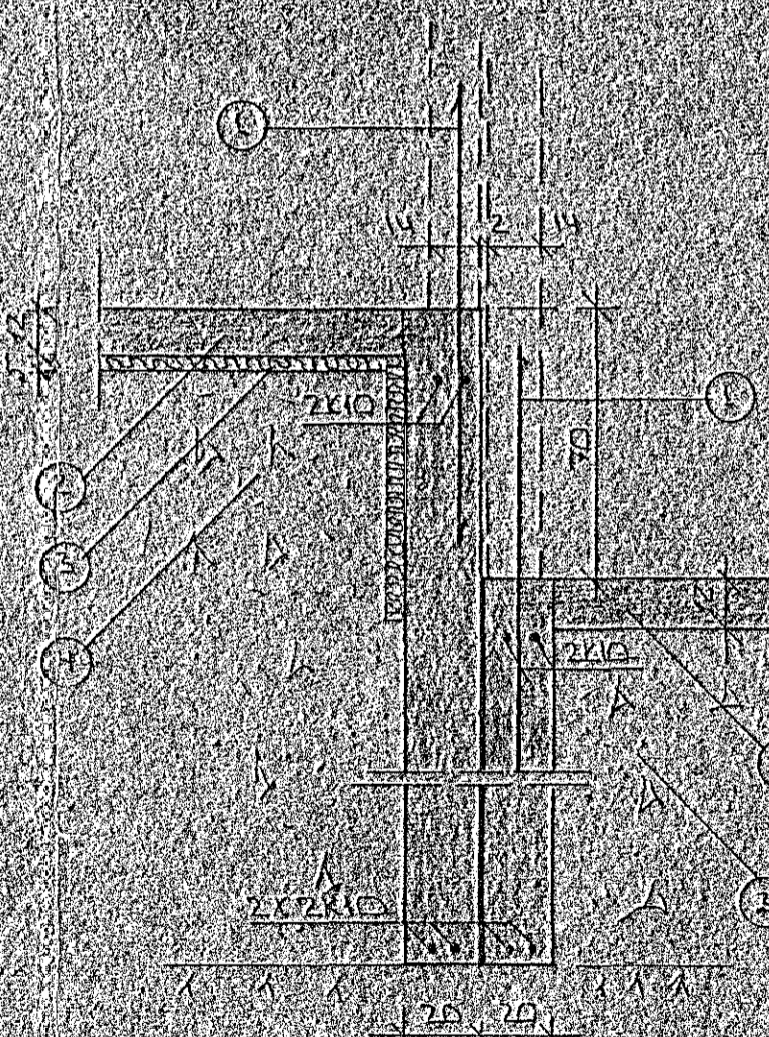
SNID 6:1:20



SNID 3:1:20



SNID 4:1:20



SNID 7:1:20

SKYRINGAR

- ① — JARNINGI 10x10 LE 10 OG STANDI AMK 50 CM NFK FLÖTU
- ② — 1,5 CM GARNBENT FLATA
- ③ — 50 MM P/C EINANGRÖUN HARÐPRESSUÐ P/L 25x30 KG/M³ EINANGRÖUNIN NAF AMK 50 CM NIELIK FJÖR FLÖTU A LITREGGUM
- ④ — GRISAR Eða HVALFILLING FROSTEN OG KJAPPST Í LÖGUM MED TITRANSDÖPNU LAGFJÖK RÖÐIST AF STÖRÐ ÞJÖPÐUNNE 2x10 EFET OG NEDST Í SOKKULVEGGUM JARNIN SÍU SAMFELD OG HEIL UM HÖRNU NIB SAMSKEMT SKULU PÁL SKELT AMK SEM SVAKAR SKRYTILENGD ATHYGLI ER VAKIÐ A AKVEÐUM RAFFELD UM SAMTENGINGU NEDR SOKKULIARNA EÐR TEKNINGU RAFFAGNAÐUNNEK



BR. NR.	DAGA	EDLI	SKYRINGAR	SIGN.
			SJURARVAMMUR 11-22 HAFNARFIRSI	BAAS. OPS. 37
			SNID 1 UNDIRTÖÐUR	HANNAS
				TEIKNAR
				VERIS. NR. 8752
MELI. V. 1:1:20			SIGURDUR ÞORLEIFSSON	TEKNI. RAÐGJAFUR FTTFI
			STRANDGÖTULI 11 HAFNARFIRSI	SÍMI 5474
				BLAD NR. 1-D3