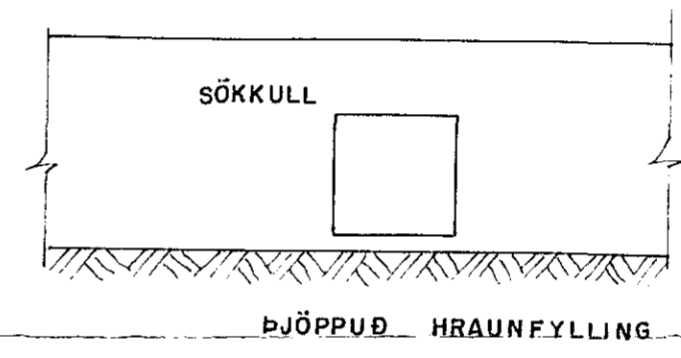
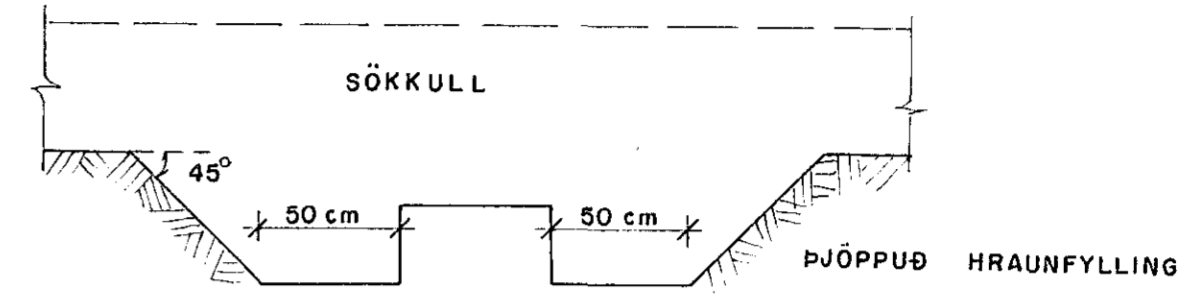
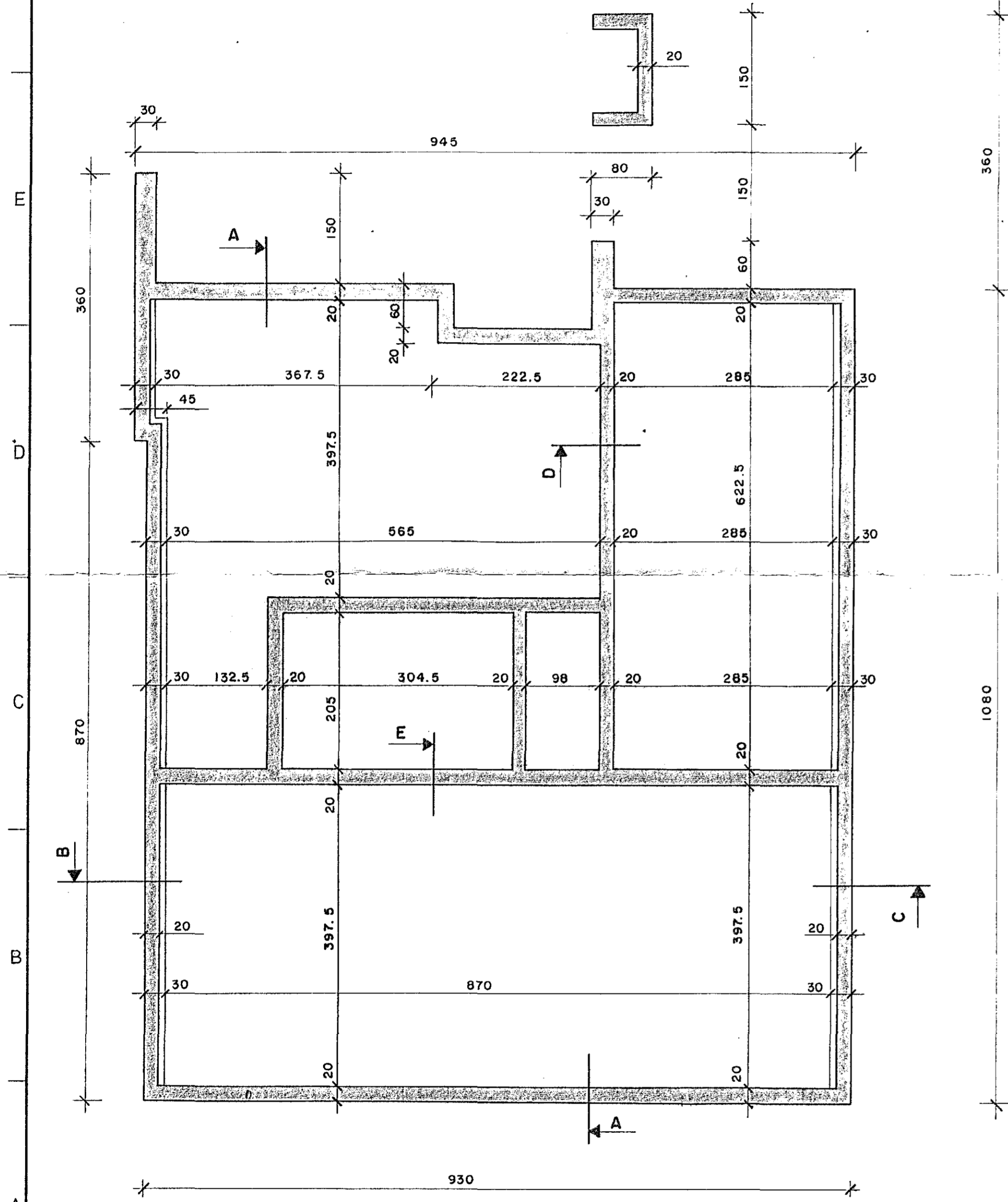
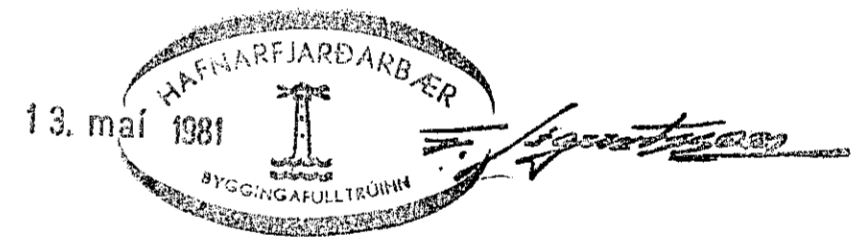


GRUNNMYND UNDIRSTÖÐUR Mkv. 1:50



GRAFID SKAL FYRIR LÖGNUM UNDIR SÖKKLUM ÁÐUR EN ÞEIR ERU STEYPTIR



SKÝRINGAR :

- ÁLAG Á GRUNN 140 KN/M<sup>2</sup>
- STEYPUGÆÐI S 200 , SIGMÁL 5-10 CM
- LOFTBLENDI 5% , FRKVFL. B SAMKV. IST. 10
- K: TÁKNAR KS 40 KAMBSTÁL SKV. IST 10
- R: - " - SLÉTT RÚNJÁRN - " - SI 37
- STEYPUHULA JÁRNA SKAL VERA , A.M.K. 20MM
- NEMA ANNAÐ SÉ TEKIÐ FRAM Á TEIKN.
- ÞÓ SKULU JÁRN Í JÖRÐ HAFI 50 MM STEYPUHULU
- SNID ERU Á TEIKN. NR. 102

<b>STEKKJARHVAMMUR 25</b>		
Mkv. 1:50	<b>UNDIRSTÖÐUR</b>	
Hannað: E.M.E.		
Teiknað: P.S.		
Yfirfarið: <i>Einar</i>	Dags. APRÍL '82	Teikn.nr. 101
<b>Einar Magnús Einarsson FTFÍ</b> Sléttahraun 19, Hafnarfirði Sími 518 51		

BREYTT 12.5.'82 SNID A *Einar*