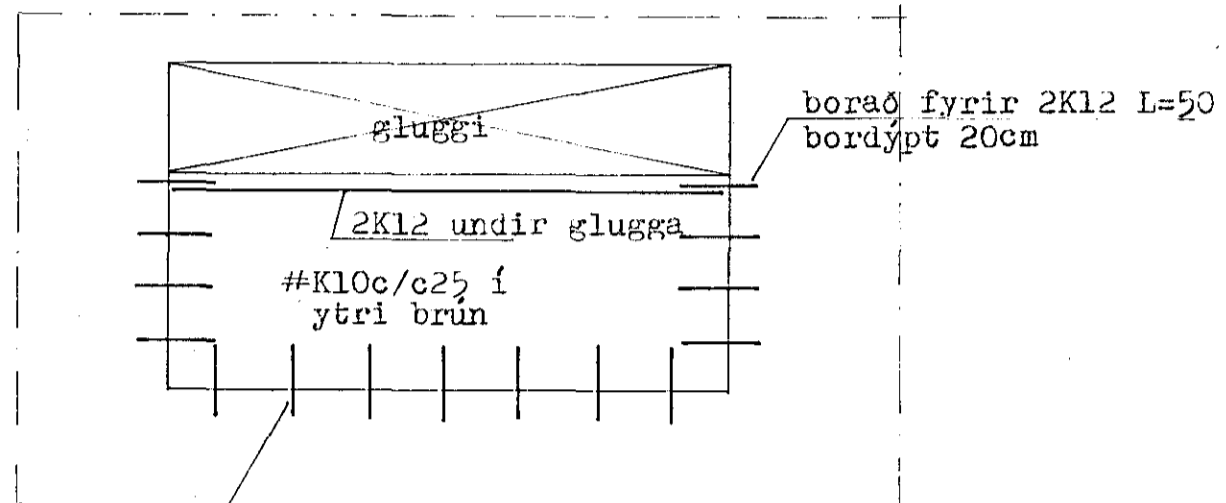


GLUGGI G2 og G3

ekki í kvarða

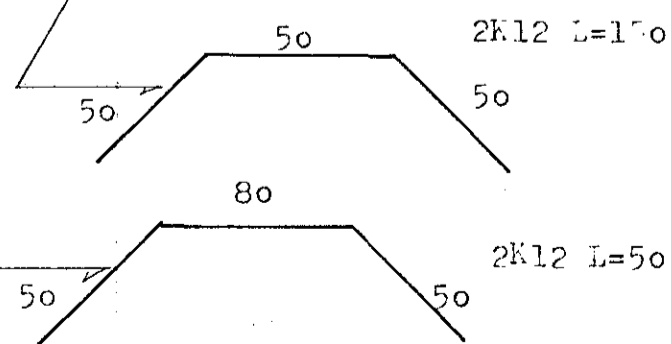
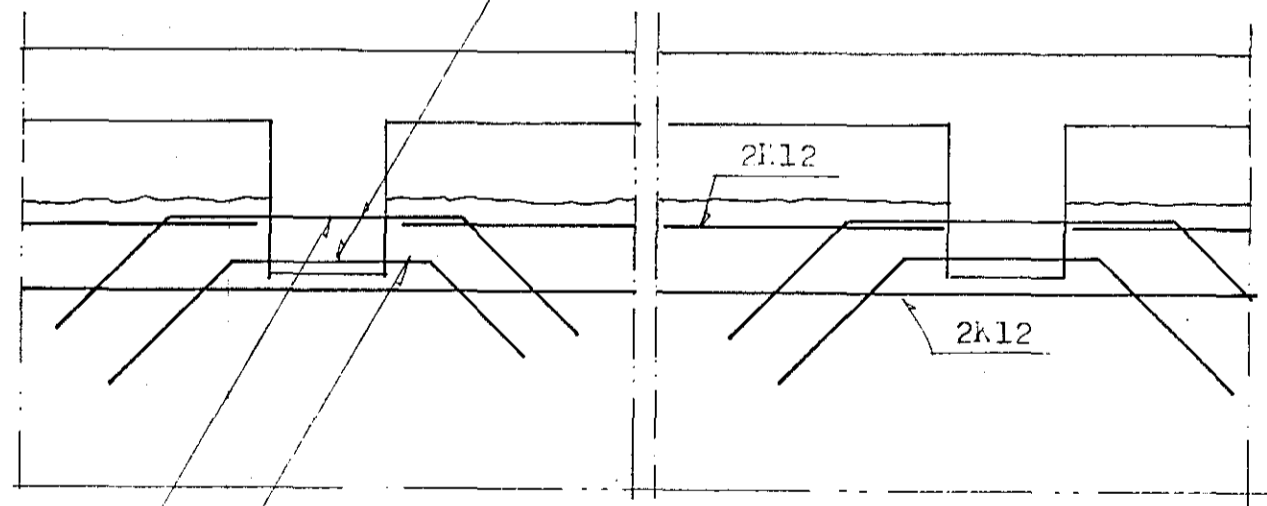


borað fyrir 2K12 L=50
bordýpt 20cm

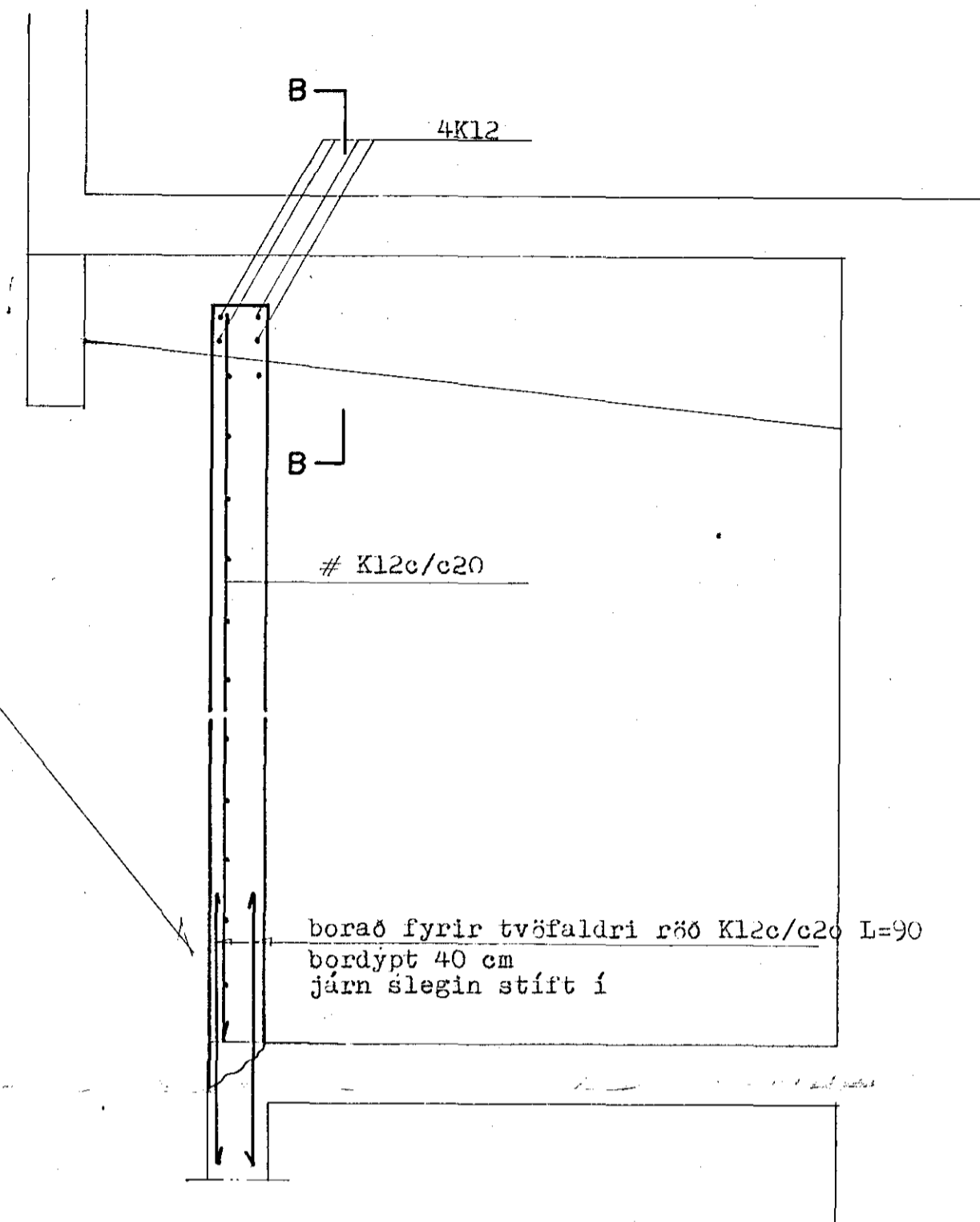
borað fyrir K12c/c25 L=50
bordýpt 20cm

SNID E-B 1:20

Borað fyrir járnum K12
í gegnum bita



SNID A-A

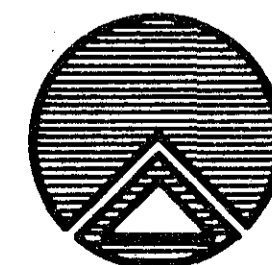
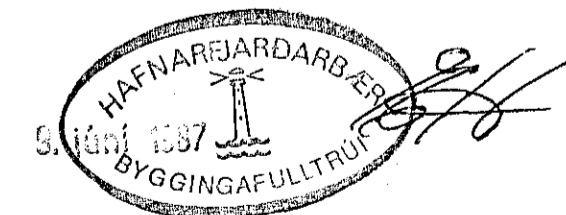


eldri kantur
brotinn burt

B

K12c/c20

borað fyrir tvöfaldri röö K12c/c20 L=90
bordýpt 40 cm
járn slegin stíft í



TEIKNISTOFAN RÖDULL

ÁRMÚLA 36 - 108 REYKJAVÍK - SÍMI 33950 & 33577

Iðnaðarbanki Íslands
Strandgötu 1, Hafnarfirði

steypt undir glugga og nýjir veggir

TEIKN. hg	DAGS. Júní '87
REIKN. hg	VERK. 87001
YFIRF.	BLAD. 2.03
MKV.	

Alþingi