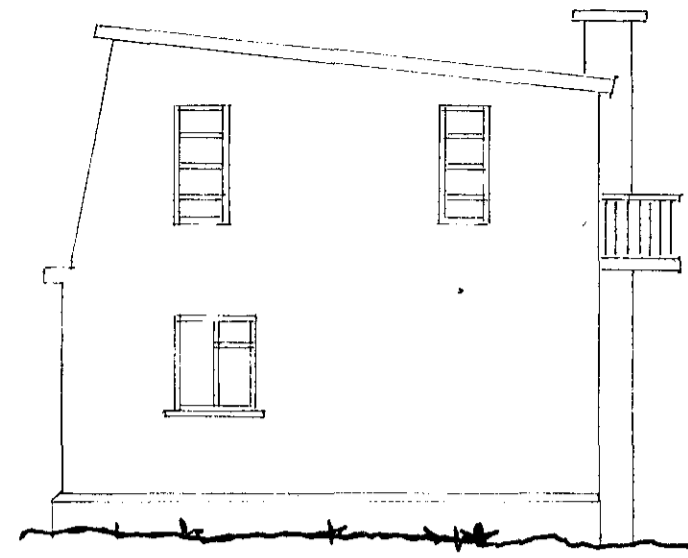
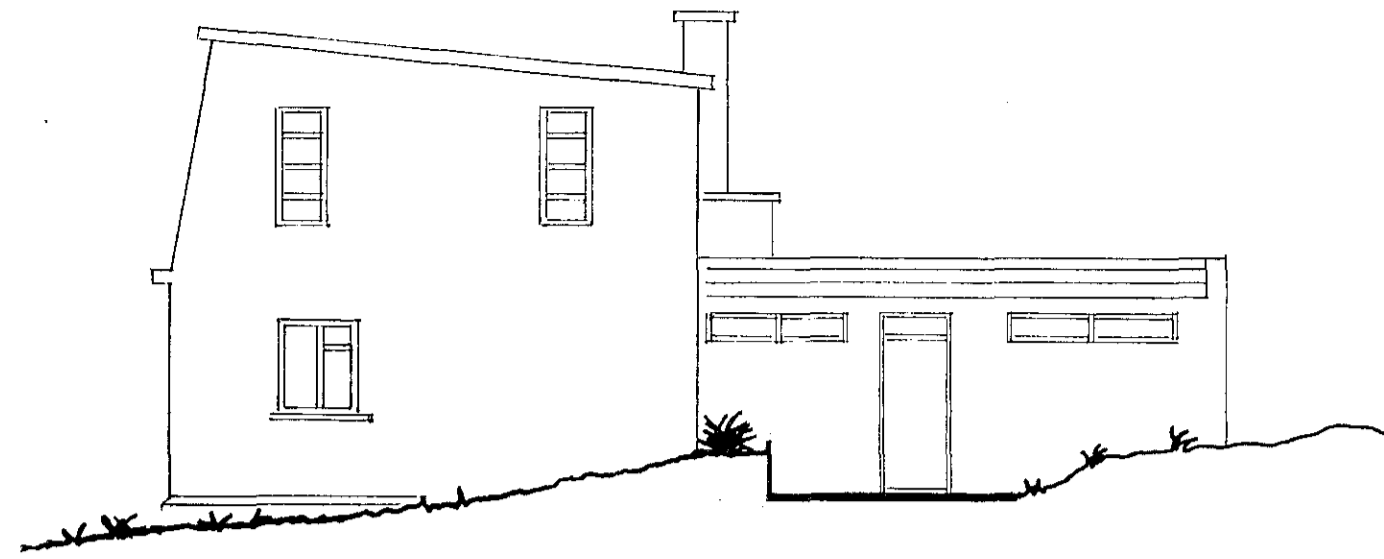


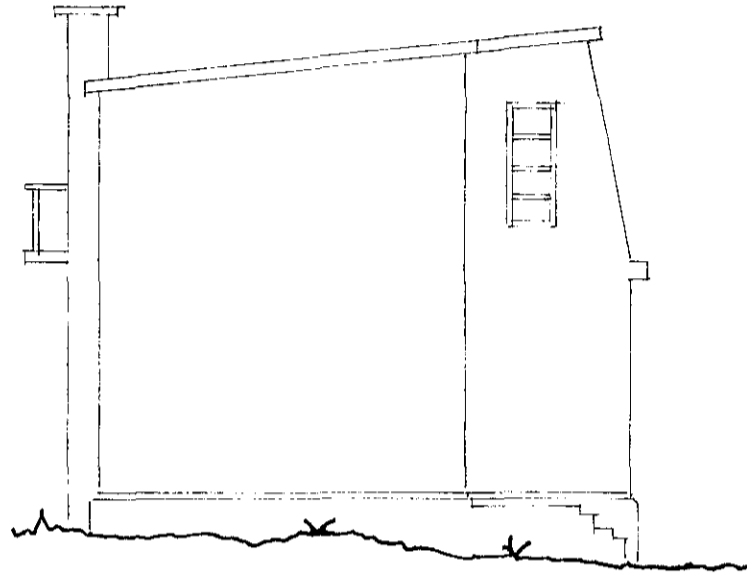
Samþykkt á fundi bygginga-
nefndar þ. 16. 7. 1975
BYGGINGAFULLTRÚINN
Í HAFNARFIRÐI
V. Sigurðsson



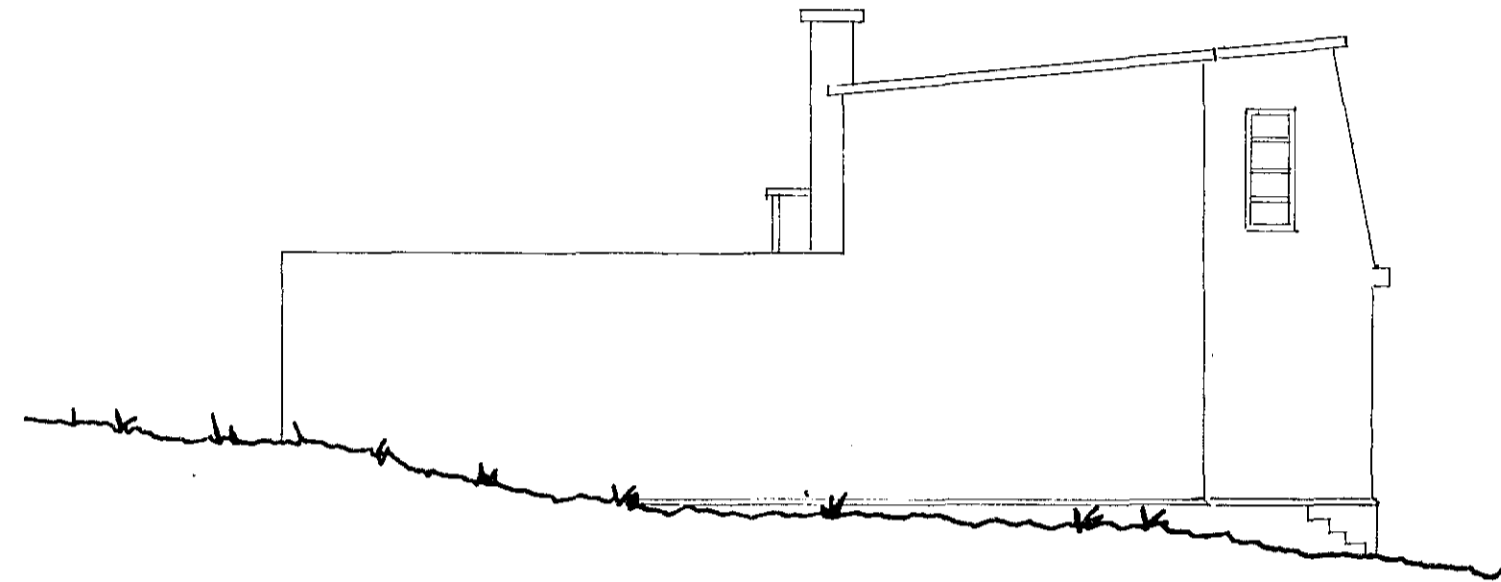
SHD - VESTUR



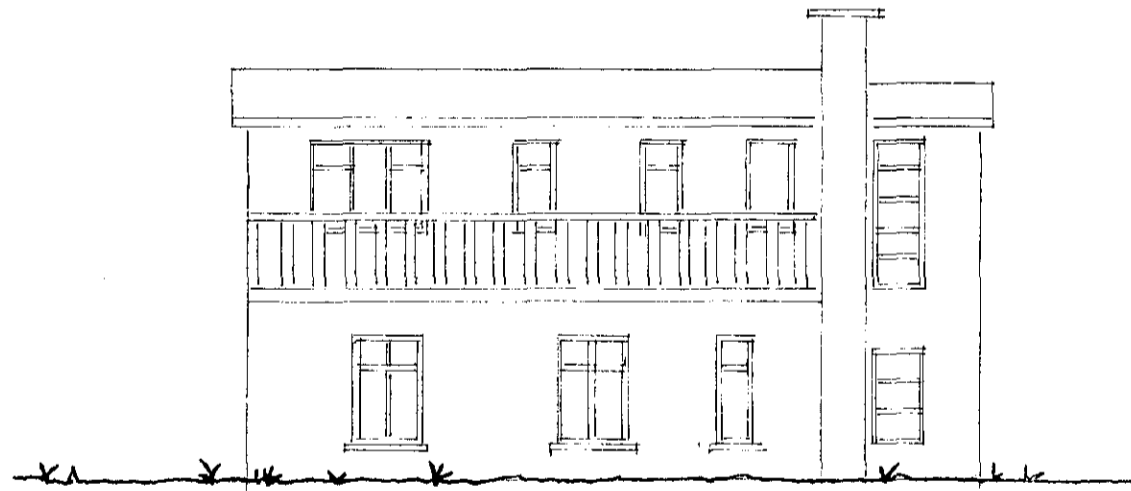
SUD - VESTUR



NORD - AUSTUR.



NORD - AUSTUR.



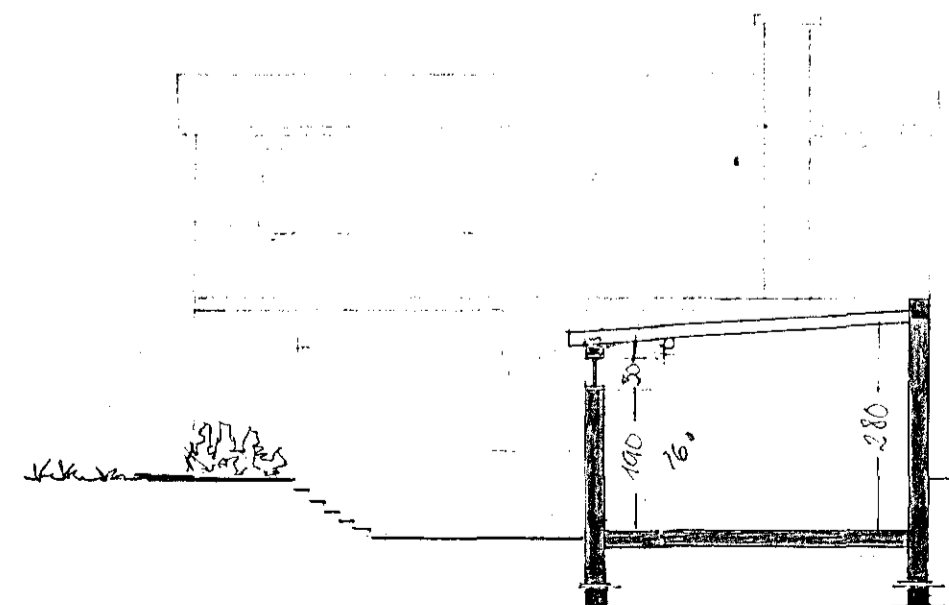
SUD - AUSTUR



SUD - AUSTUR

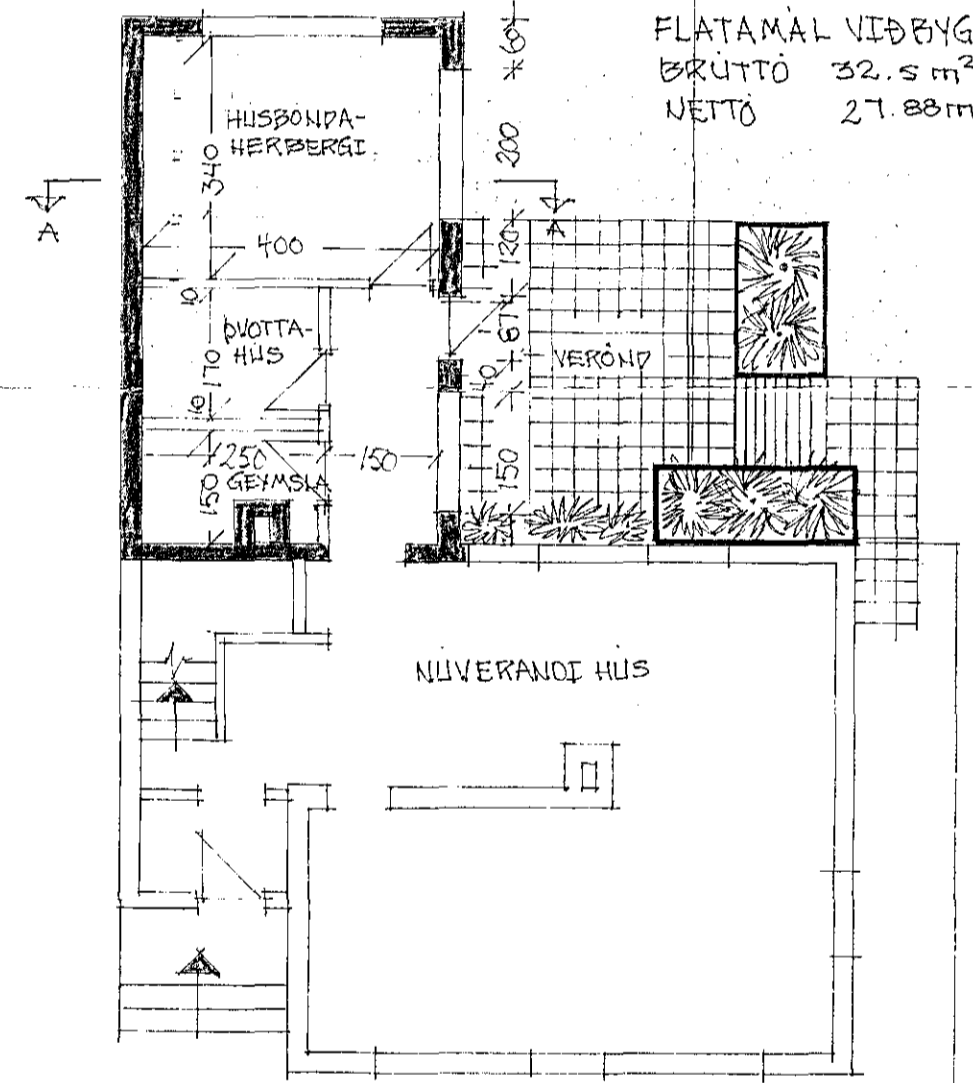


NORD - VESTUR.



SNEIÐING A-A

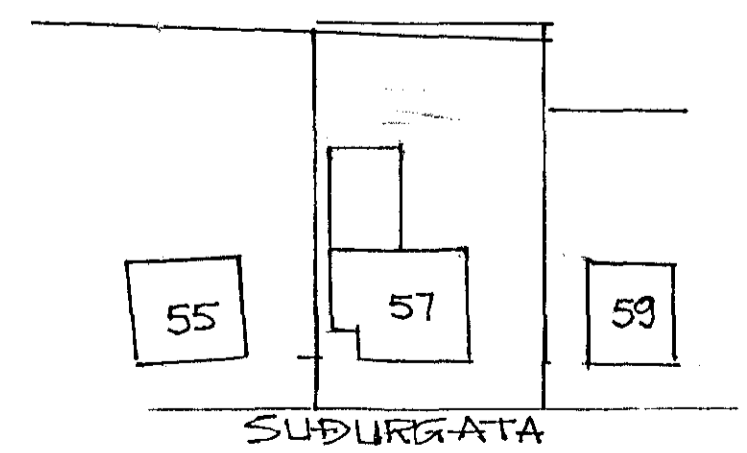
20
4180 * 250 * 100+



FLATAMÁL VIÐBYGGINGAR.
BRÚTTÓ 32.5 m²
NETÓ 27.88 m²

GRUNNMYND

$32,5 \times 2,7 = 88 \text{ m}^2$



SUDURGATA