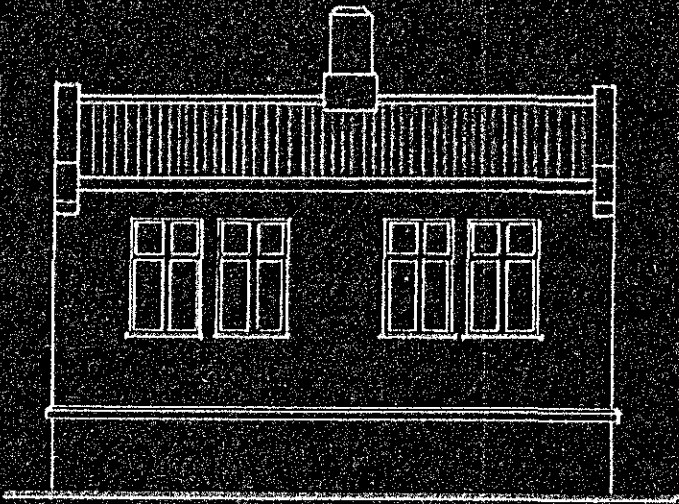


HUS SIGVALDA GUDMUNDSS. HAFNARFIÐI

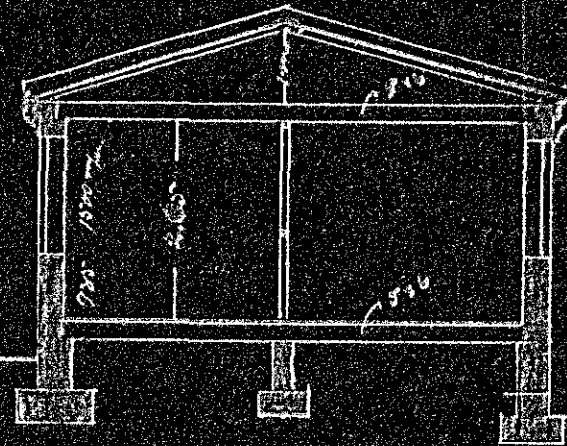
NORÐURHLID (AÐ SÚÐUR) (A)



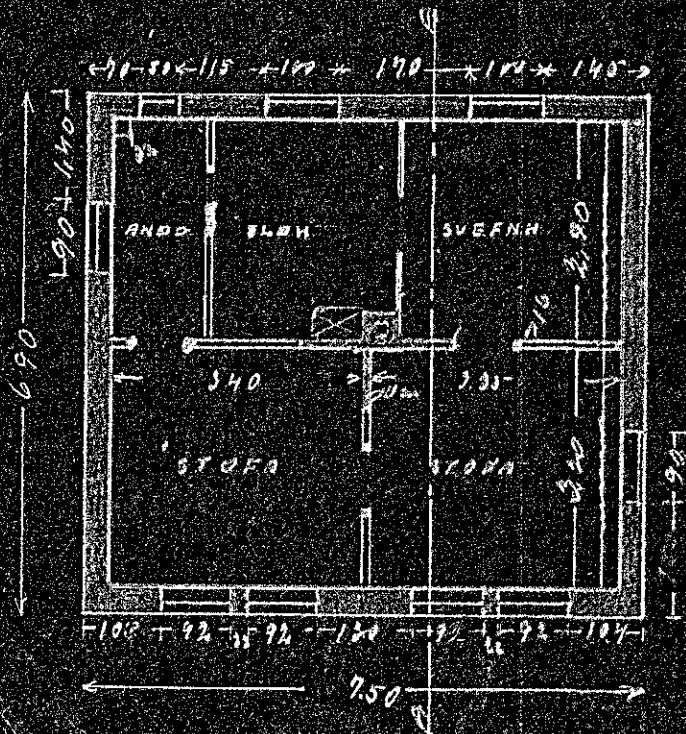
SÚÐURHLID



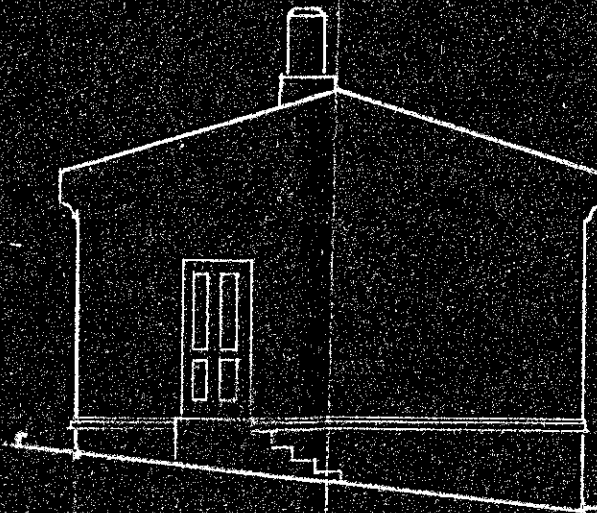
SKURÐUR A-A



I COO LOF



AUSTURCOAFL



VESTURCOAFL



Skurðir 1:100  
 Hafnarfið 2910-29  
 Sigvalda Guðmundsson