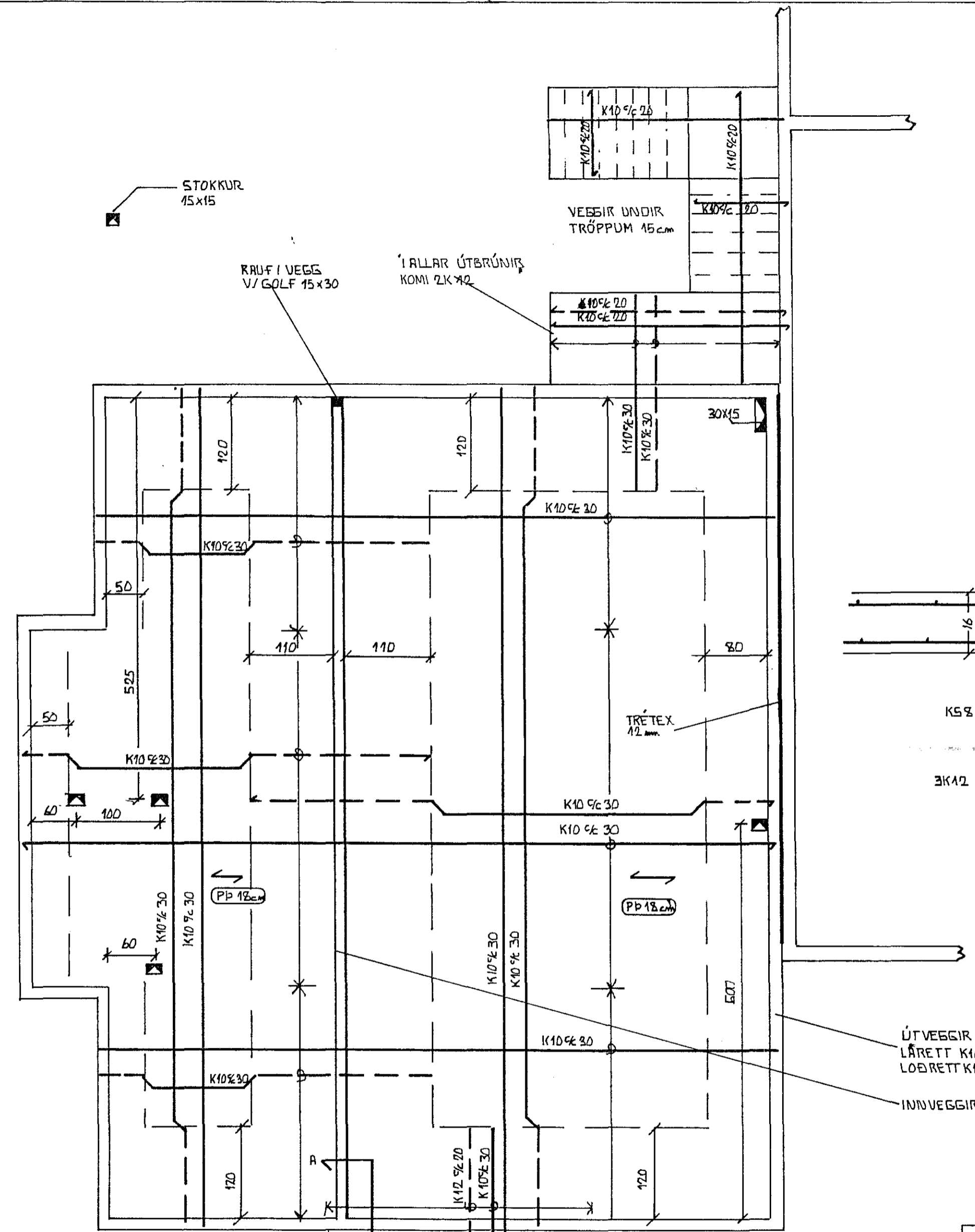
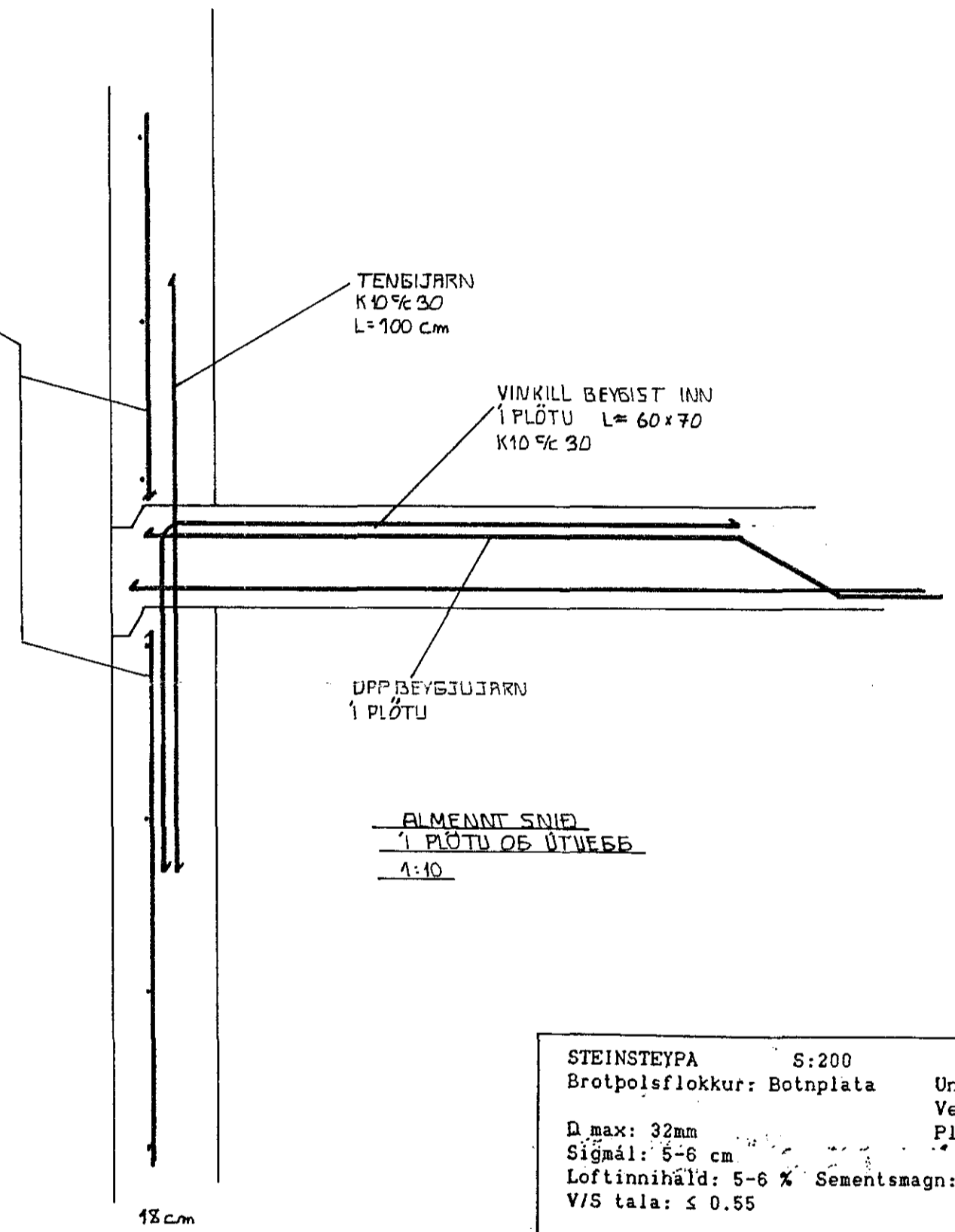
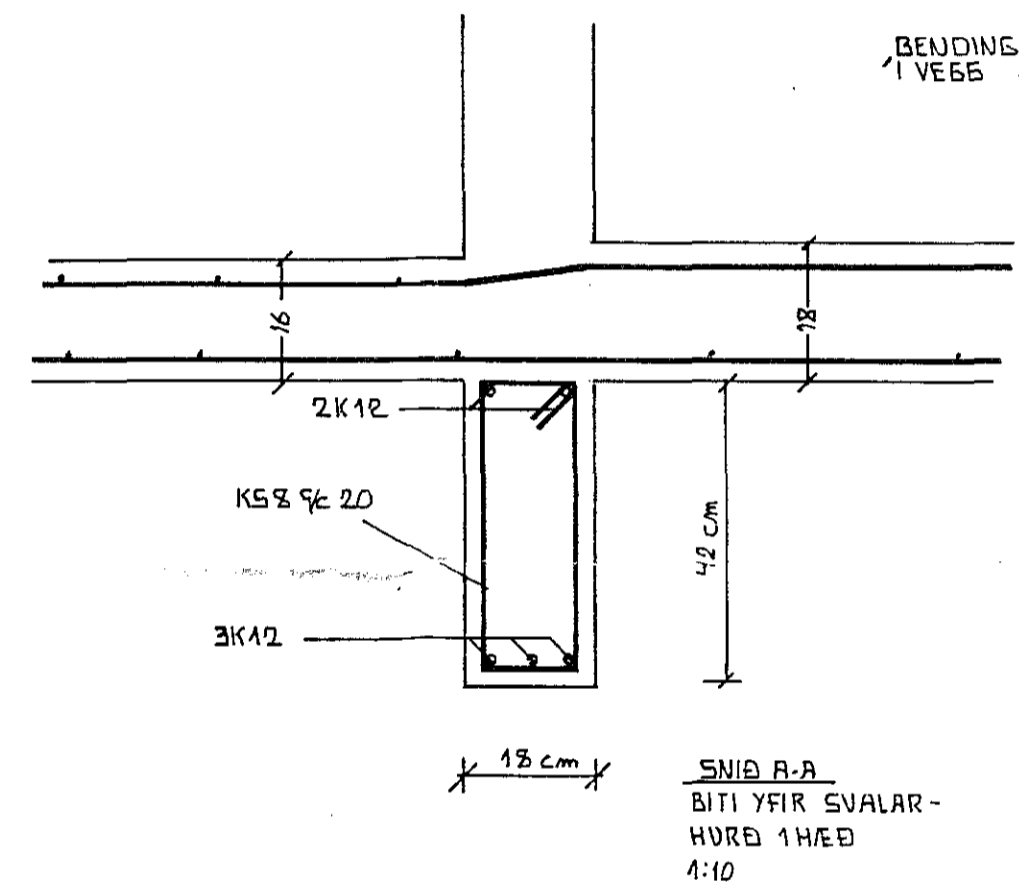


JARNBENDING PLATNA
 Alag: Notálag skv. 1ST 12.2
 Þök 2.0 KN/m² (Snjóálag innifalið)
 Gólfplötur íbúða 1.5 KN/m²
 Vindálag skv. 1ST 12.3 1.4 KN/m²
 Snjóálag skv. 1ST 12.4 1.0 KN/m²

———— Bending í neðri brún plötu
 - - - - - Bending í efri brún plötu
 (PP.....) Plötupykkt í cm
 C/C: Bil milli bendistanga miðja á miðju
 K : Kambstál Ks40 Skriómörk 400 N/mm²
 R : Slétt stál Skriómörk 240 N/mm²
 STEYPA : S200 V/S < 0.55 sigmál 5-10cm



ATH. JARNBENDING VEGGJA OS PLATNA Í NR 92 ER SPEGIL-MYND AF NR 90



ÚTVEGGIR 18cm
 LÁRETT K10 c/c 20
 LÖÐRETT K10 c/c 30
 INNVEGGIR 15cm

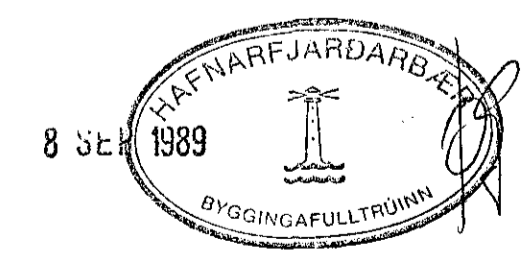
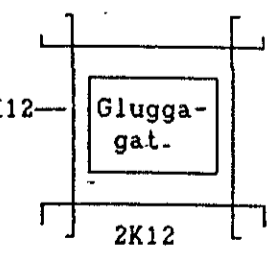
STEYPA S:250

JARNBENDING VEGGJA

ÚTVEGGIR
 Lárétt: k10 c/c 20
 Löðrétt: k10 c/c 30

INNVEGGIR
 Lárétt: k8 c/c 30
 Löðrétt: k8 c/c 30

I kringum öll glugga og hurðargöt komi 2K12 sem gangi minnst 50 cm útfyrir gatið I alla veggenda komi 2k12 löðrétt



STEINSTEYPA S:200 S:250
 Brotþolsflokkur: Botnplata Undirstöður
 Veggir Plötur

D max: 32mm
 Sigmál: 5-6 cm
 Loftnihald: 5-6 % Sementsmagn: 2300kg/m³
 V/S tala: ≤ 0.55

BENDISTAL
 Bendistál skal vera í samræmi við
 Íslenskan staðal 1ST 10

Slétt stál ST 37 skriómörk = 240 N/mm²
 Kambstál KS 40 skriómörk = 400 N/mm²

SVÖURSATA 90-92	DAES ASÚST'89
	MKU 1:50
PLÖTUR V/ 1H/ED VEGGIR 1H/ED	REITN EV TÖKN EV
EYJOLFUR VALSARESSON BYGGINGA-TEKNIFR/TEIINGUR	LAUFVANI 42 SIMI 54793