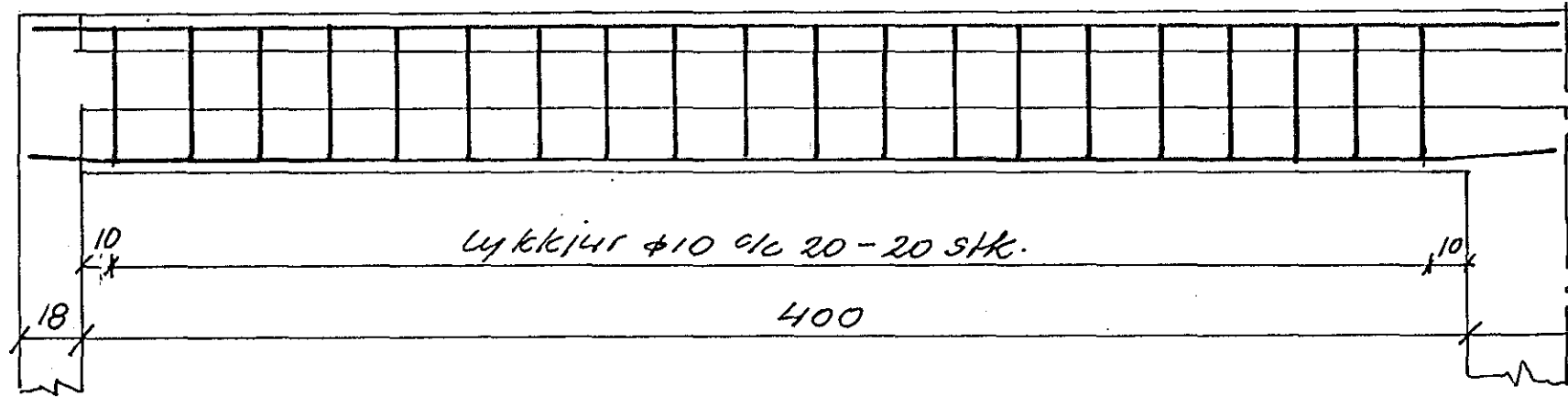


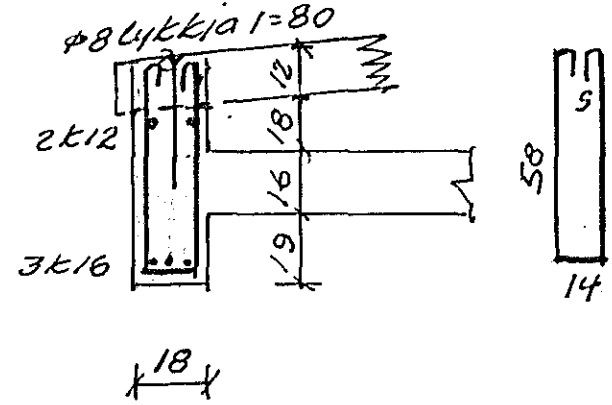
B3.1 1:20



2k12 l = 480

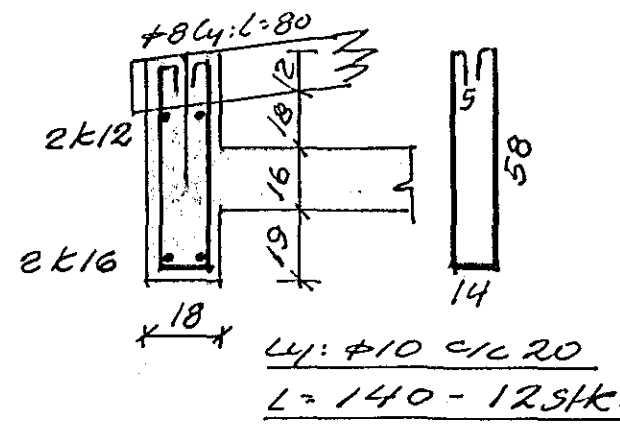
3k16 l = 480

Snið i B3.1

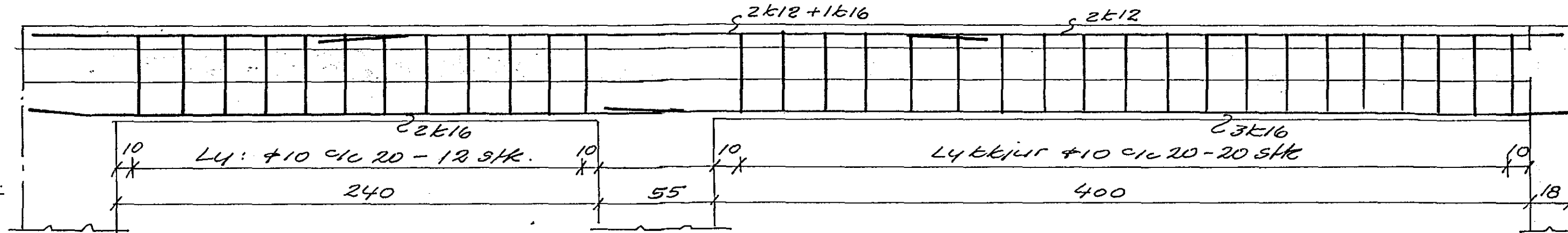


Lykkjur $\phi 10$ c/l 20
L = 140 - 20 stk.

Snið i B3.2



B3.2 1:20



1k16 l = 350

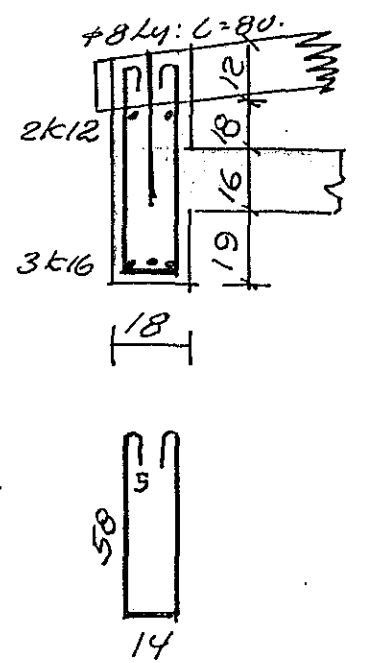
2k12 l = 780

1k16 l = 460

2k16 l = 780

B3.3 1:20

Snið i B3.3



L4: $\phi 10$ c/l 20
L = 140 - 20 stk.

Endi á k16 30/5

Benedikt B. Sigurdsson
veftr.

Súðurvangur nr. 4-Hf.

M. 1:20 Járnhent skýpa.

D. apr. '71 Bitar.

Nr. 6. bl. Þm. B. Sigurdsson.

