

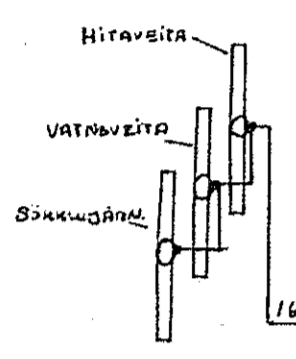
lantök samþykkt 8.11.2. 1978

f.h. RAUFELTU HAFNARFJÁRDAR
P. E. Einarsson

Húsvita nr. 1575 Teikning nr. 178
Samþykkt þ. 15.11. 1978
f.h. RAUFELTU HAFNARFJÁRDAR
E. Einarsson
Elektrískur fellaframa

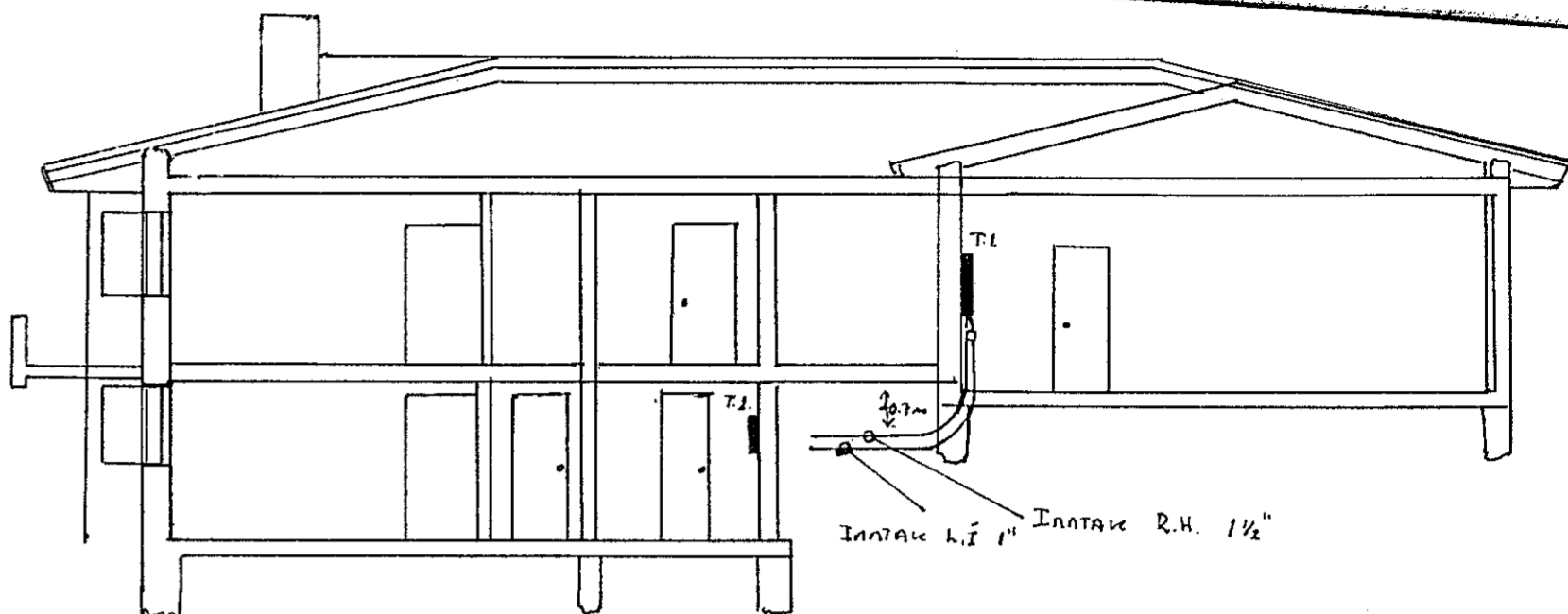
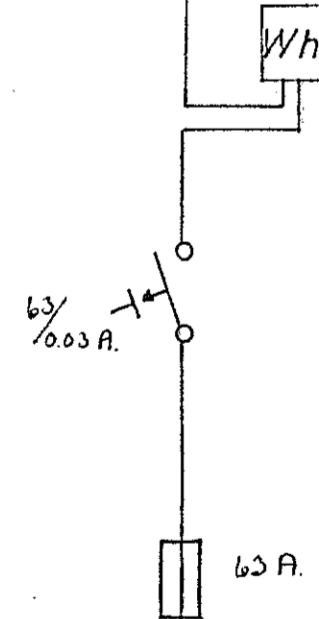
T. 1.

- 1. 10A $\Pi 0 \frac{5}{8} \times 1.5^2$ K Sónvarpsherb. V.S. Þjötta og geimsla
- 2. 10A $\Pi 0 \frac{5}{8} \times 1.5^2$ K Hjón. Barnaherb. vestur.
- 3. 10A $\Pi 0 \frac{5}{8} \times 1.5^2$ K Stofa
- 4. 10A $\Pi 0 \frac{5}{8} \times 1.5^2$ K Borðstofa og forgangur
- 5. 10A $\Pi 0 \frac{5}{8} \times 1.5^2$ K Eldhús og búr.
- 6. 10A $\Pi 0 \frac{5}{8} \times 1.5^2$ K Húsb.herb. forstofa og gesta. V.S.
- 7. 10A $\Pi 0 \frac{5}{8} \times 1.5^2$ K Þvottavél
- 8. 10A $\Pi 0 \frac{5}{8} \times 1.5^2$ K Þurrhari
- 9. 10A $\Pi 0 \frac{5}{8} \times 1.5^2$ K Bílskúr
- 10. 20A $\Pi 0 \frac{3}{4} \times 2.5^2$ K Ofn
- 11. 20A $\Pi 0 \frac{3}{4} \times 2.5^2$ K Eldavél.
- 12. 16A $\Pi 0 \frac{5}{8} \times 1.5^2$ K Uppþvottavél.

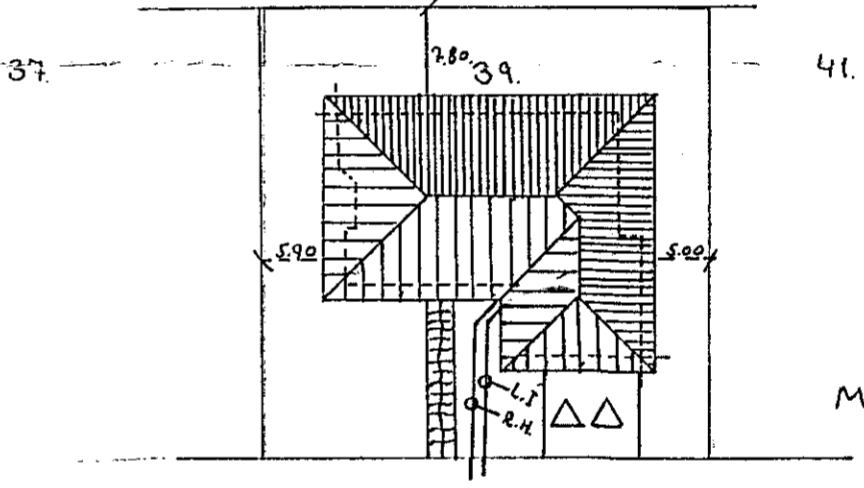
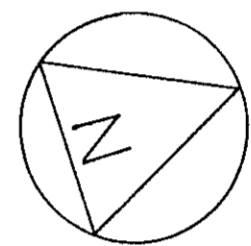


13. 40A $\Pi 1 \times 3 \times 6^2$ KVISL AD TÖFU 2 VALLARA
- 1. 10A $\Pi 0 \frac{5}{8} \times 1.5^2$ K Stofa, gangur og herb.
 - 2. 10A $\Pi 0 \frac{5}{8} \times 1.5^2$ K Keramik og ljós gufu
 - 3. 20A $\Pi 0 \frac{1}{2} \times 4^2$ C Gufuofn. óákvæð.
 - 4. 16A $\Pi 0 \frac{3}{4} \times 2.5^2$ K Tengill keramik
 - 5. 16A $\Pi 0 \frac{3}{4} \times 2.5^2$ K - II - II -

T. 2.



SNIP A-A M:100



M:1:500

SÆVANGUR

| | MÆLIKVARDI | VERK | TEIKN NR |
|-------------------------------|---------------------|---------------------|-------------------|
| RAFLÖAM. EINLÍNUNUMYND | | | |
| SÆVANANGUR. 39. HAFNARFJÁRDAR | Hannað. Teiknað. | Yfirfarið. Samþ. | DAGS 15/10 '78 |
| Porgeir Haraldsson | BREYTT | | |