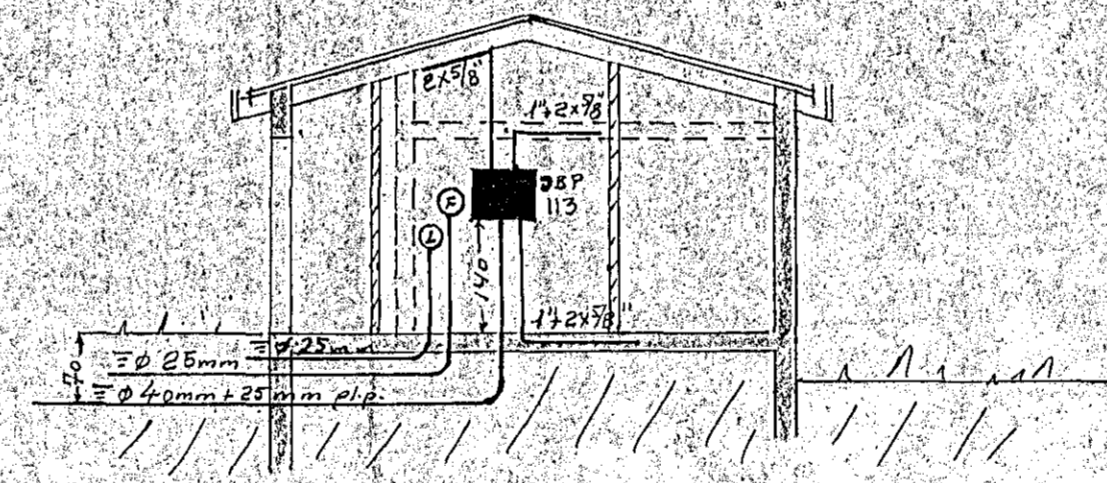
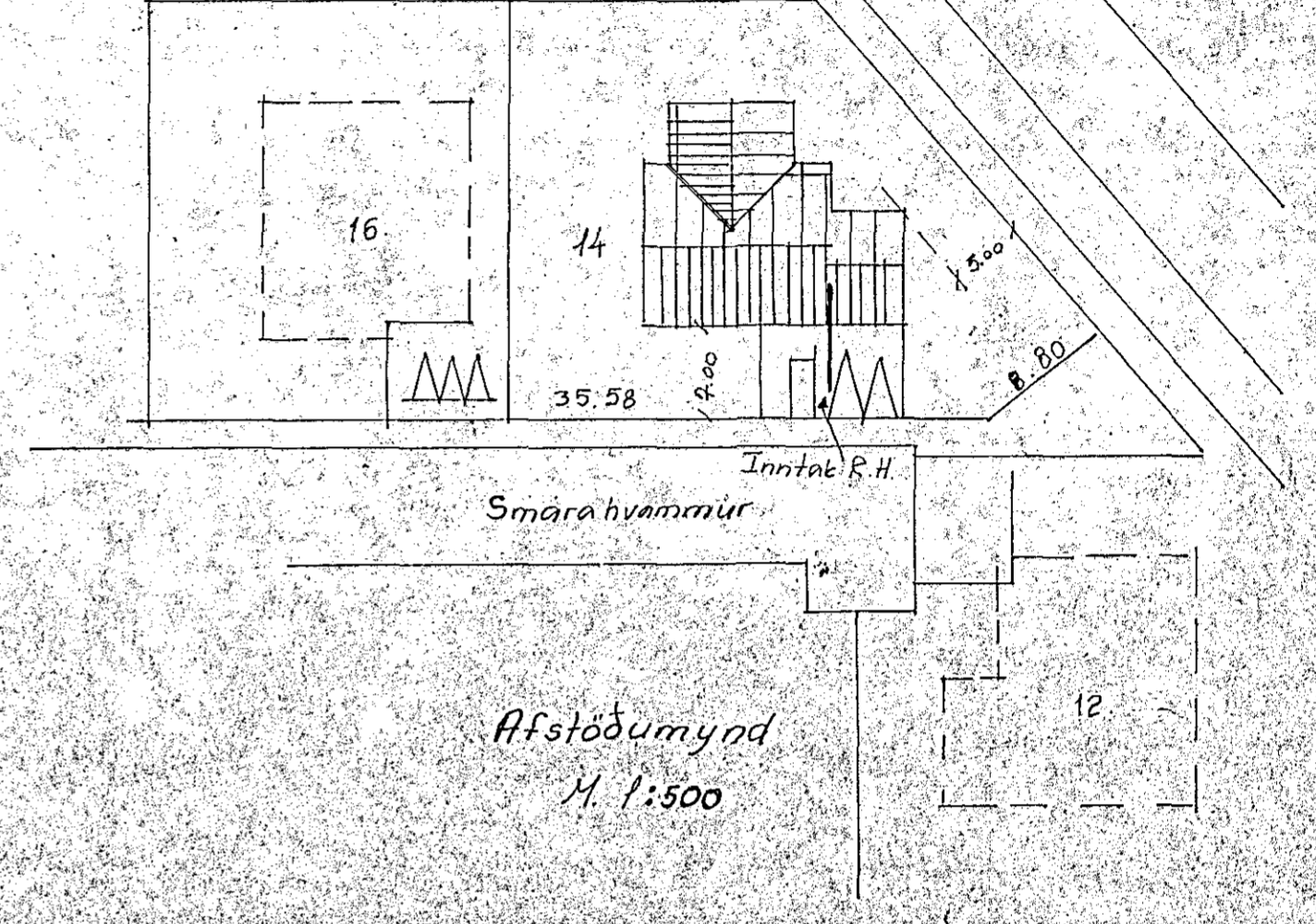
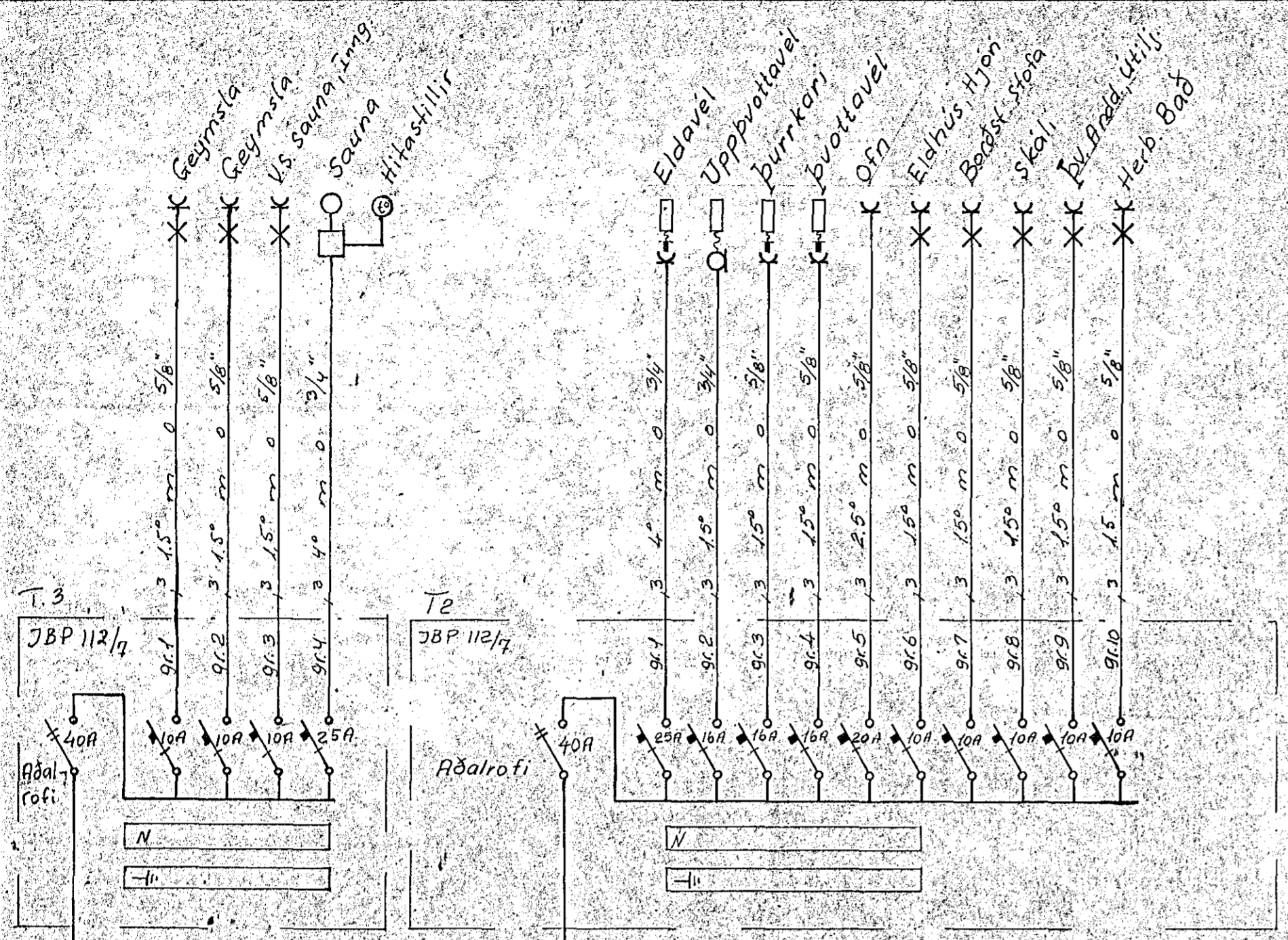
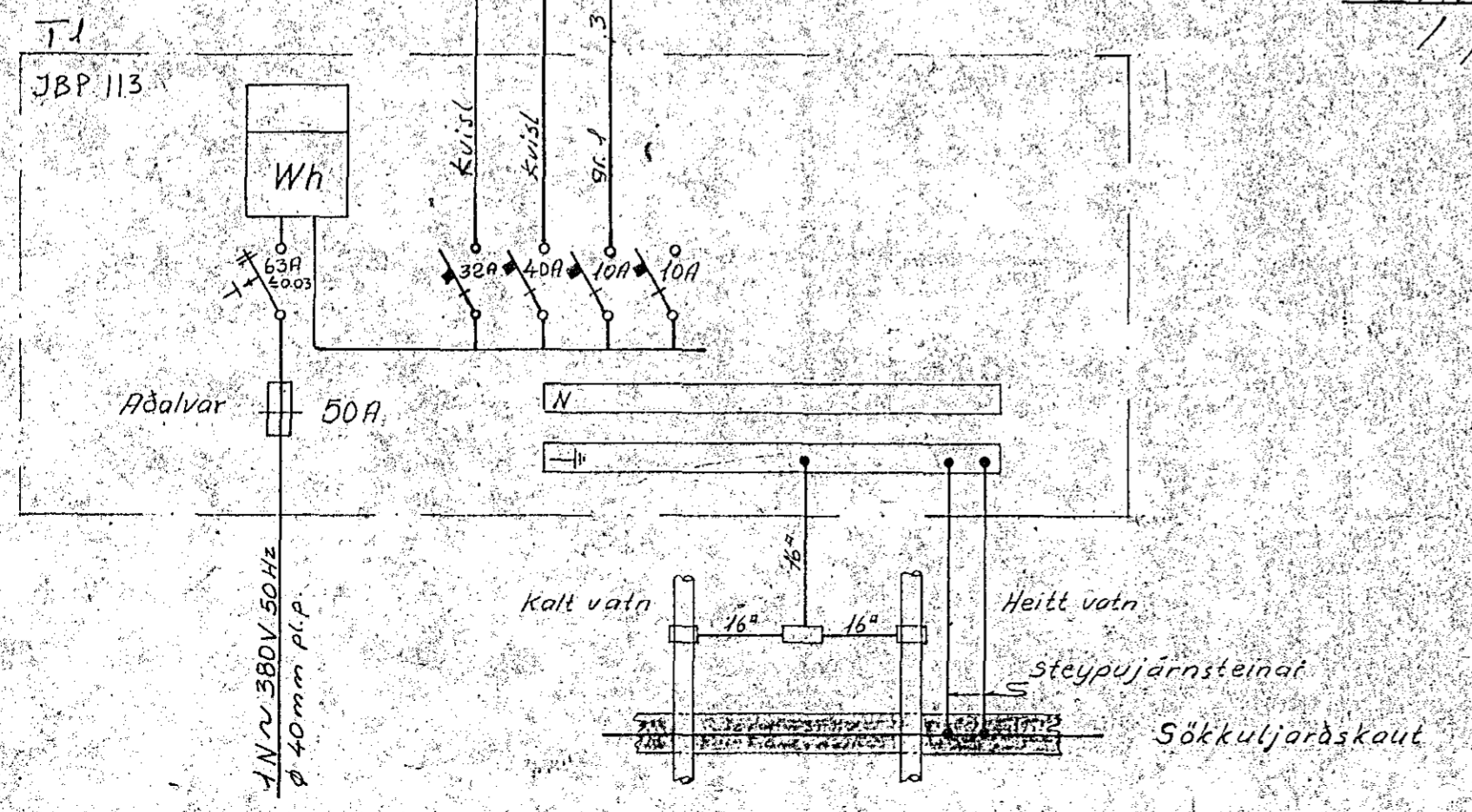


Húsvetta nr. 2814 Teikning nr. 1985
 Samþykkt þ. 15.10. 1981
 f.h. RAFVEITU HAFNARFIJARDAR
Jón Ólafsson
 Eftirlitsmaður rannsóknar

Lauslök samþykkt 15.10. 1981
 f.h. RAFVEITU HAFNARFIJARDAR
 Albert Kári Steinarsson



SKÝRINGAR:
 Lagnir eru huldar 5/8" pipulagnir og taugar 3x1,5". Hæð rofa sé 105sm.
 Hæð tengla sé 20sm.
 F=Bæjarísími L=Loftnet DS=Dyrasími } Nema annars
 Málstraumur rofa og tengla sé 10A } sé getið



SMARAHVAMMUR 14	mælikv. 1:100, 1:500 /
	dags. AGUST 1980
AFSTAÐA, SNIÐ, SKÝRINGAR	tekn. T.S. bl. 1 af 3
EINLÍNEMYND	samþ. Trausti Sveinbjörnsson
	teikn. nr. 54-B 43