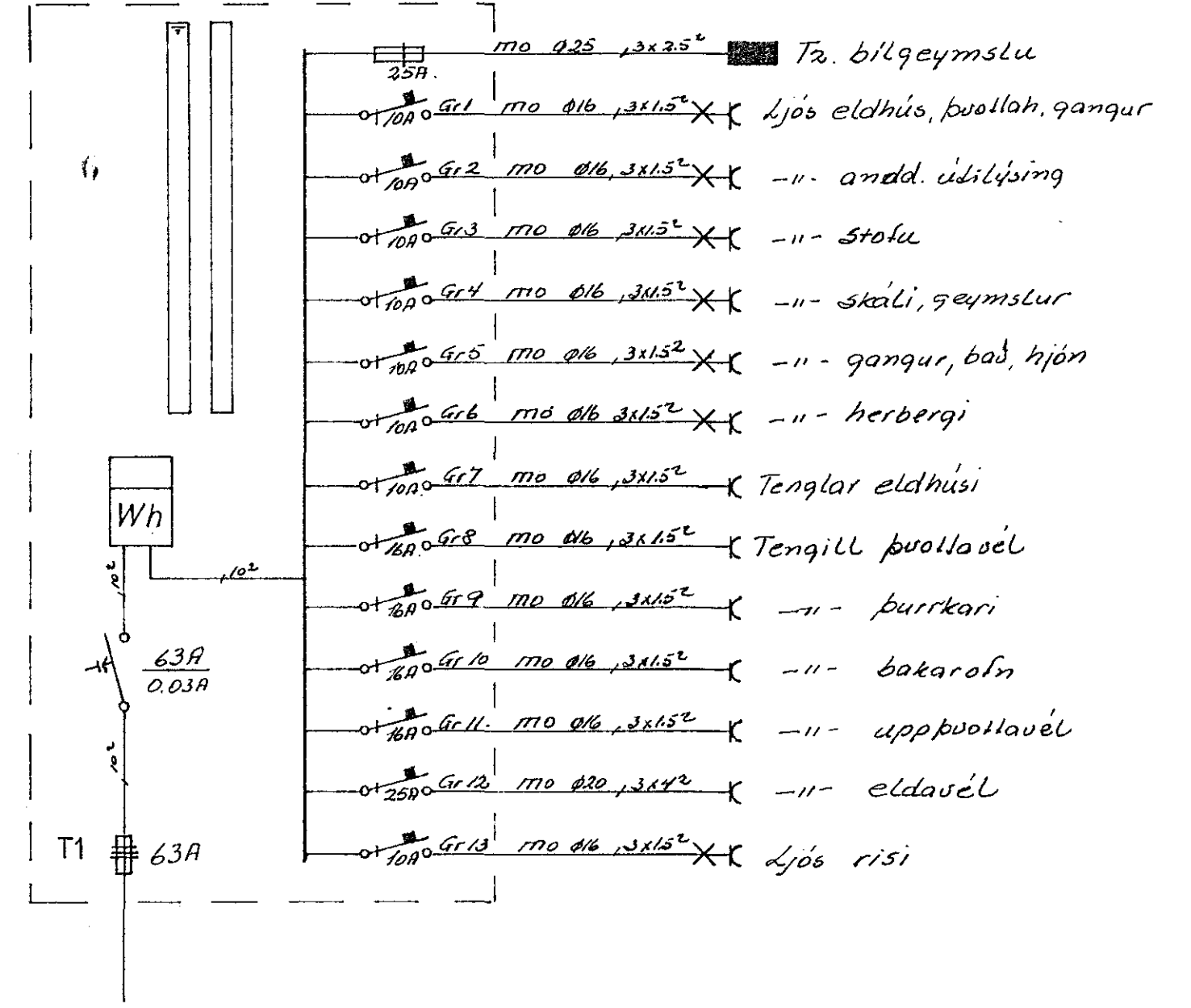
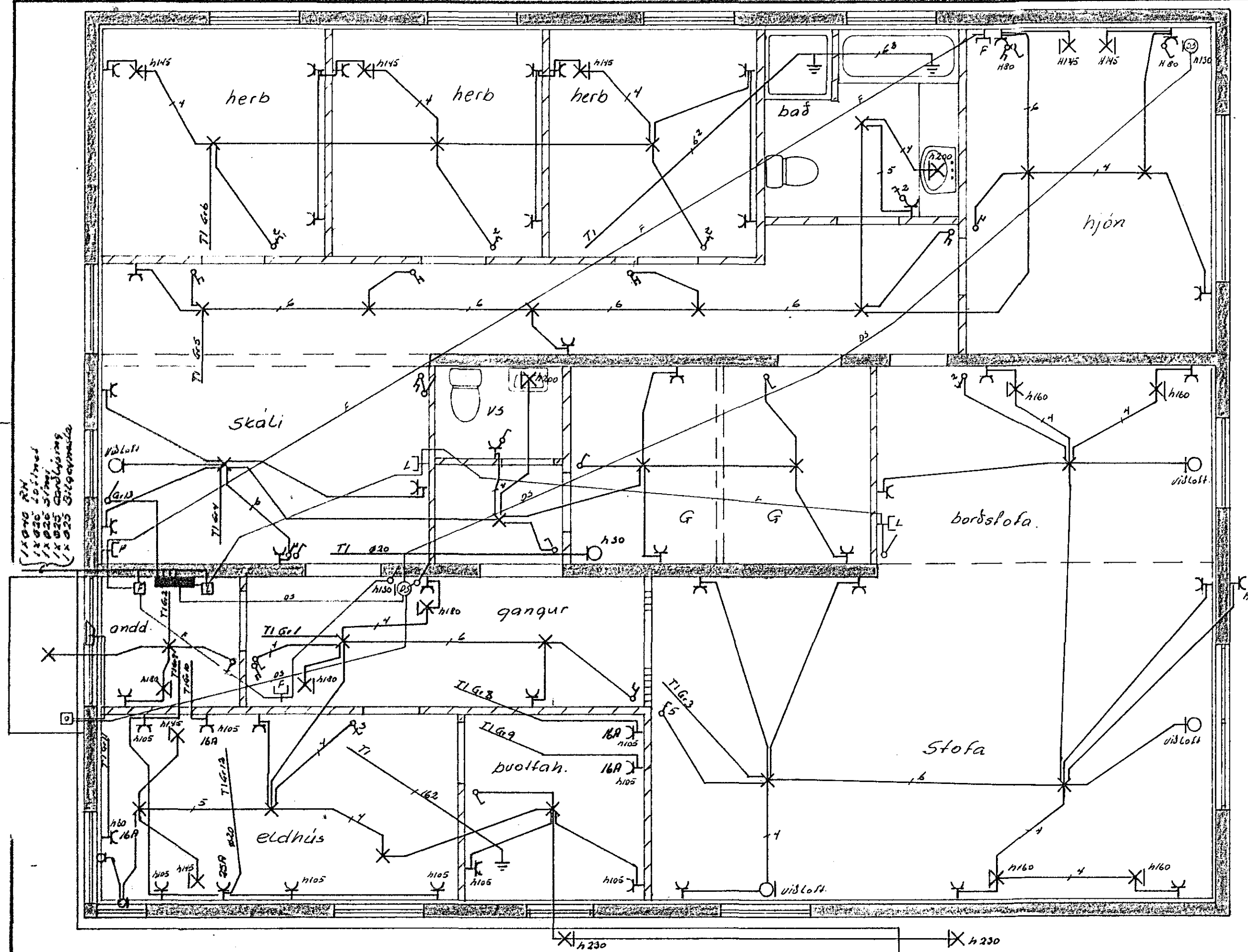
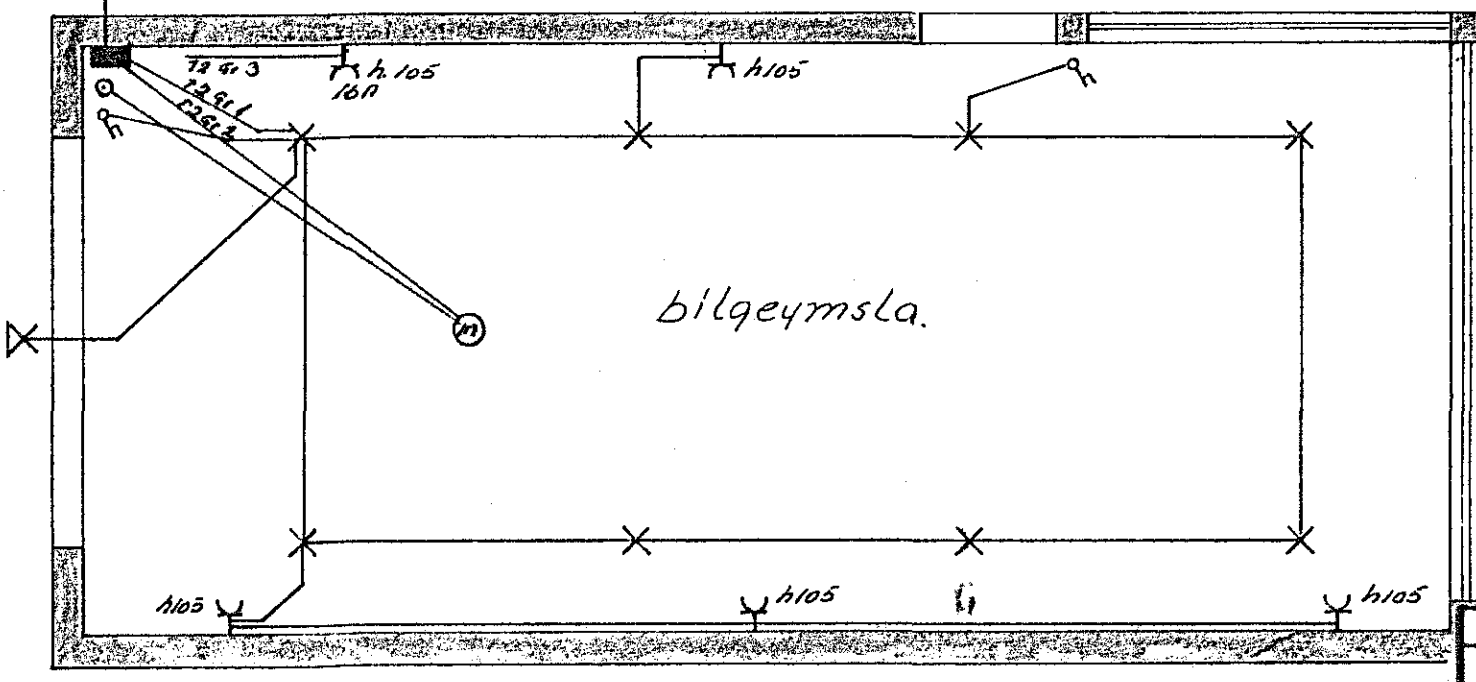
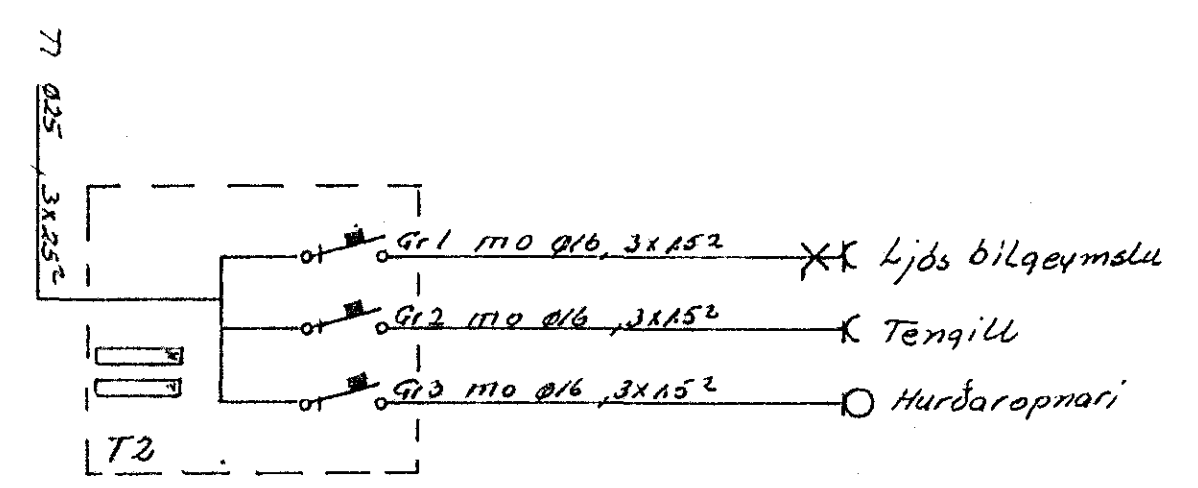


Músveita nr. 3021 / Teikning nr. 2350  
 Sámþykkt þ. 8/1 1985  
 Íh. RAÞVEITU HAFNARFJÁRDAR  
 Gunnar L. Spillmann  
 Elfréttismaður rullagna

Útdráttur sámsýkt 8/1 1985  
 Íh. RAÞVEITU HAFNARFJÁRDAR  
 Hóður Hallbergsson



- mo 025, 3x25° T2. bilgeymslu
- Gr1 mo 016, 3x15° Ljós eldhús, puoffah., gangur
- Gr2 mo 016, 3x15° -- andd. útlýsing
- Gr3 mo 016, 3x15° -- stólu
- Gr4 mo 016, 3x15° -- skali, geymslur
- Gr5 mo 016, 3x15° -- gangur, bað, hjón
- Gr6 mo 016, 3x15° -- herbergi
- Gr7 mo 016, 3x15° Tenglar eldhúsi
- Gr8 mo 016, 3x15° Tengill puoffah.
- Gr9 mo 016, 3x15° -- burkari
- Gr10 mo 016, 3x15° -- bakarofn
- Gr11 mo 016, 3x15° -- upppuoffah.
- Gr12 mo 020, 3x4° -- eldavél
- Gr13 mo 016, 3x15° Ljós risi



2350

NR.	BREYTING	DAGS	BR.
<b>PÚFUBARÐ 16</b>			
RAFLÖGN 1HÆÐ OG BILGEYMSLU EINLINUMYND		HANNAÐ	78
		TEIKNAD	78
		DAGS	09 84
		BLAÐ	1 AF 3
		KVARÐI	1 50
		VERK NR.	091