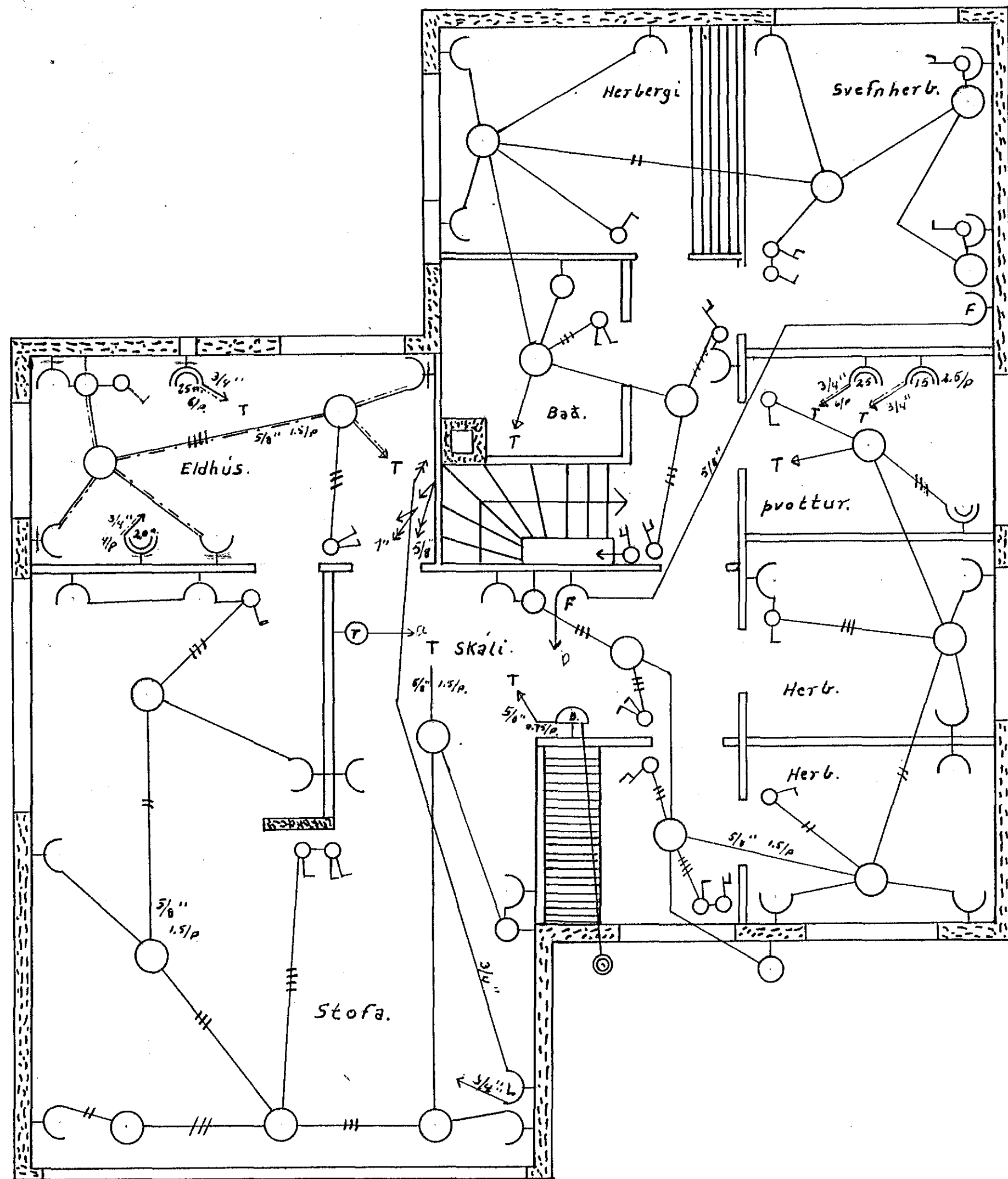
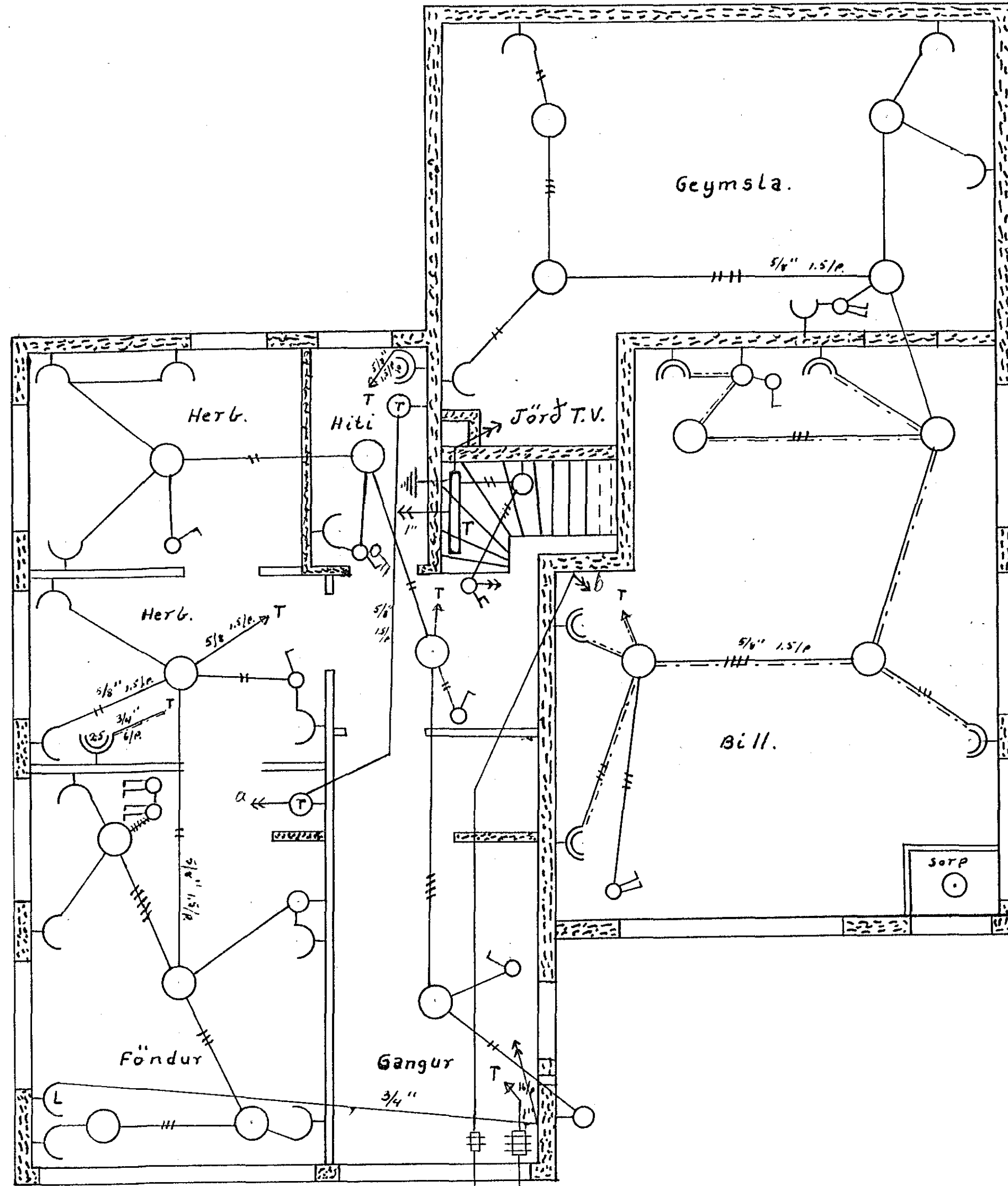


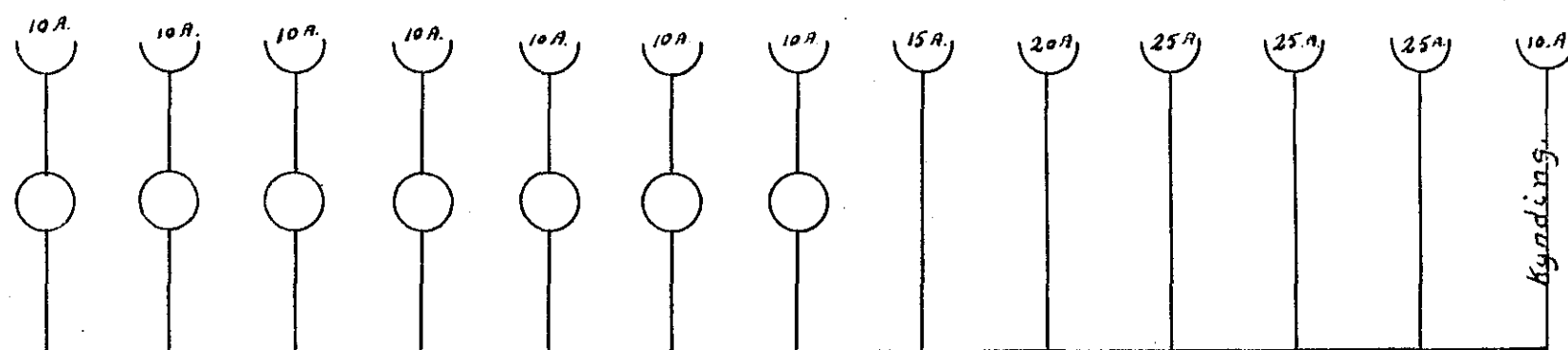
Inntök samþykkt 31.18. 1967
 f.h. RAÞVEITU HAFNARFIJARÐAR
 Verkstjórn
 Páll Guðmundsson



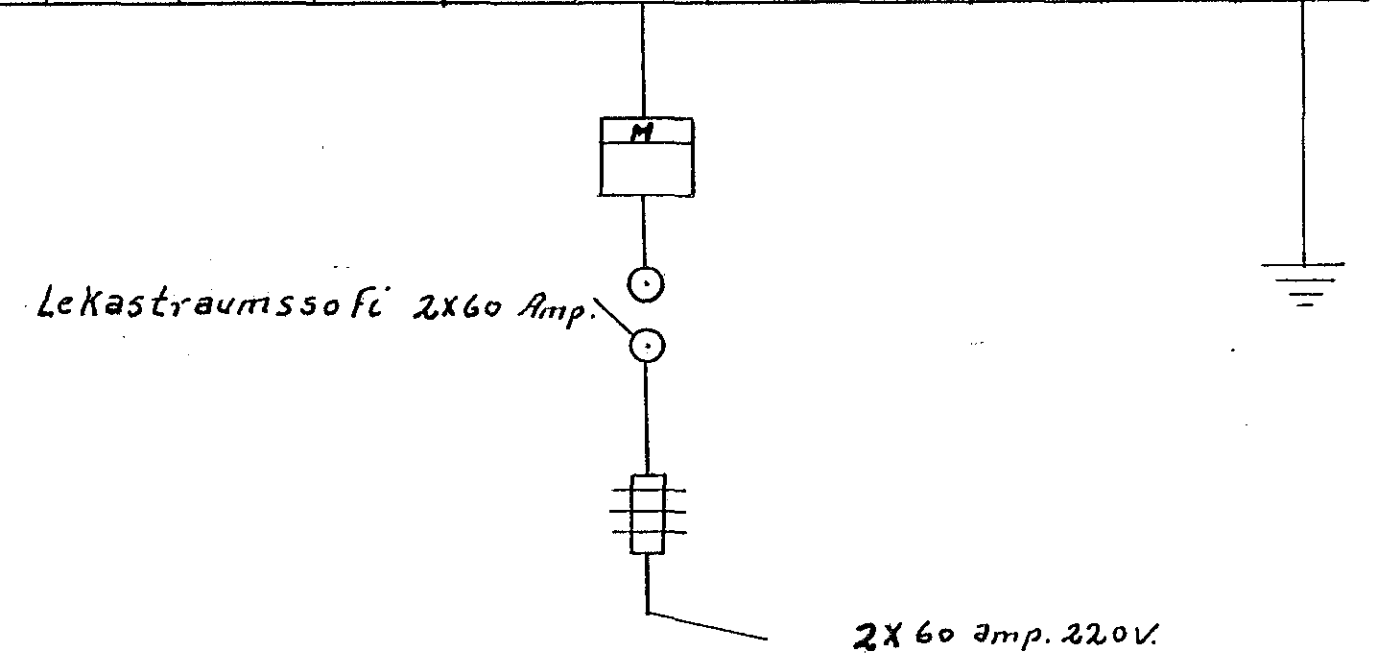
1. Hæð.



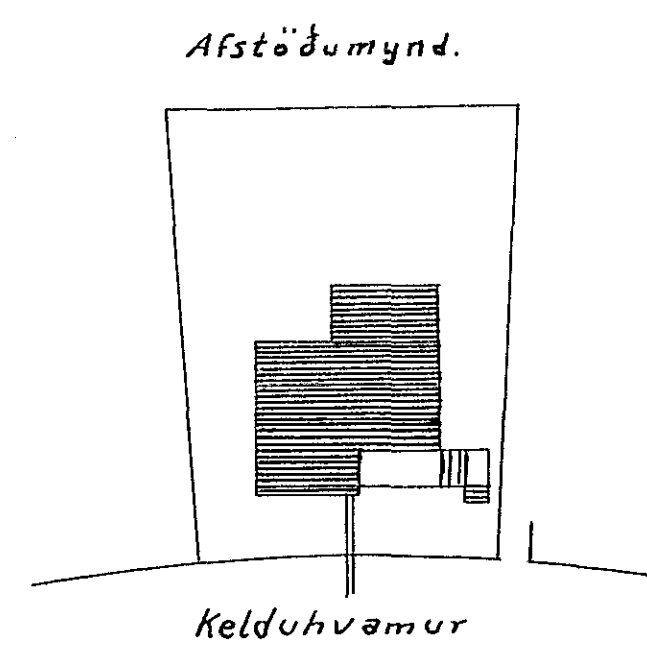
Kjallari.



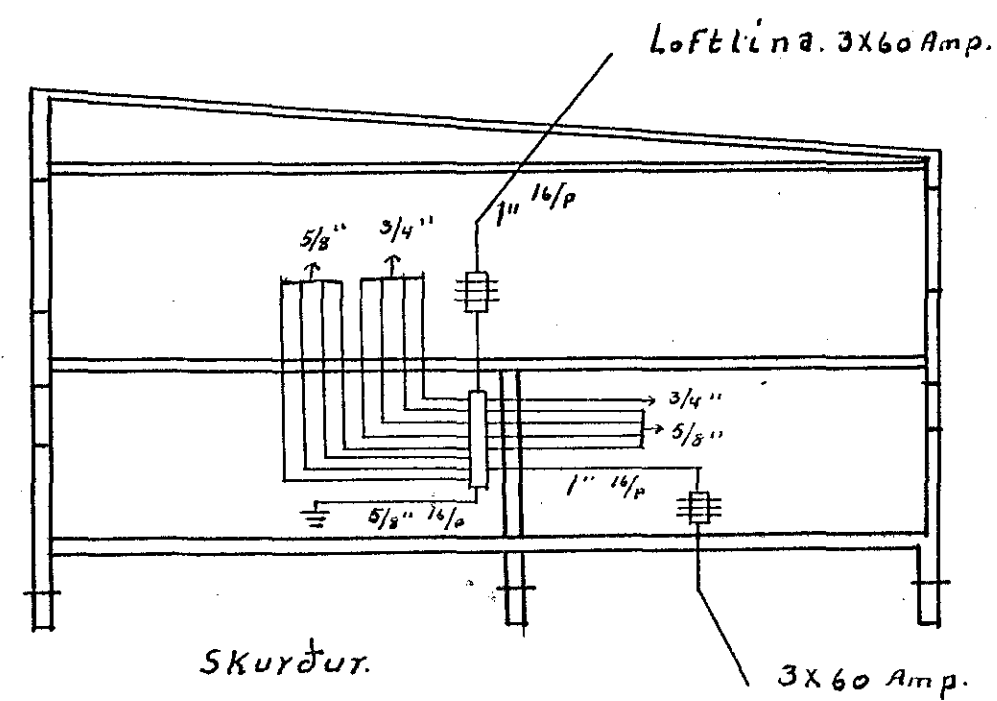
Tafla



2x60 amp. 220V.



Kelduhvammur



SKURÐUR.

1106

Ár	mán	dags.	m.K.V.
1967	Jan.	3.	1:50
Raflagnateikning			
Kelduhvammur 10			
Einar Þorsteinsson			