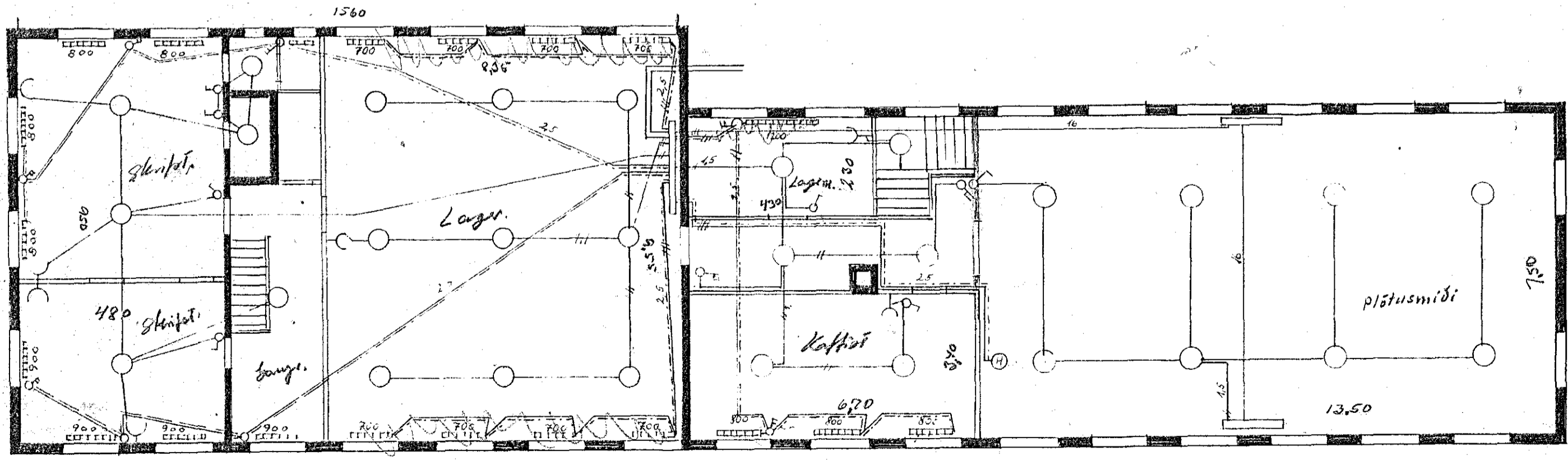
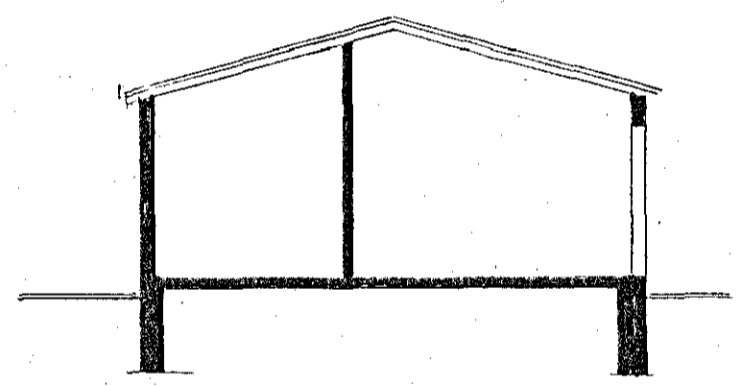
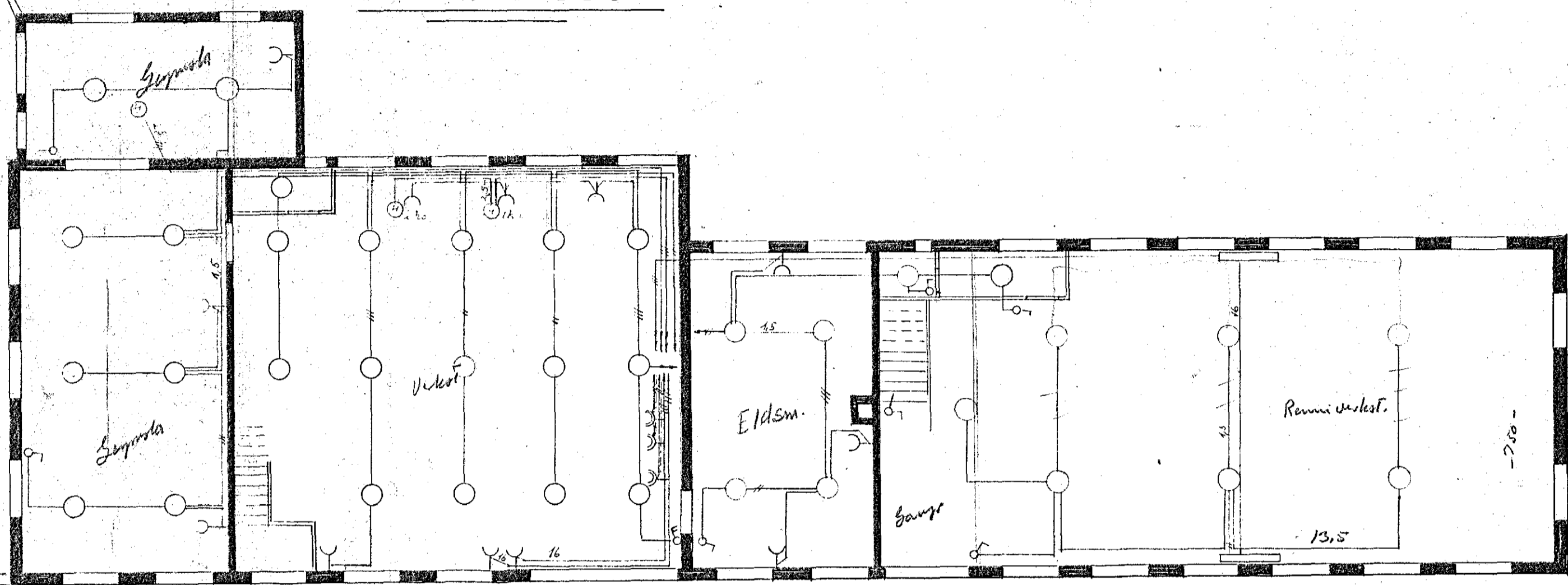


Raflögn í verksmiðjuhúsi
Vélsmiðju Hafnarfjarðar

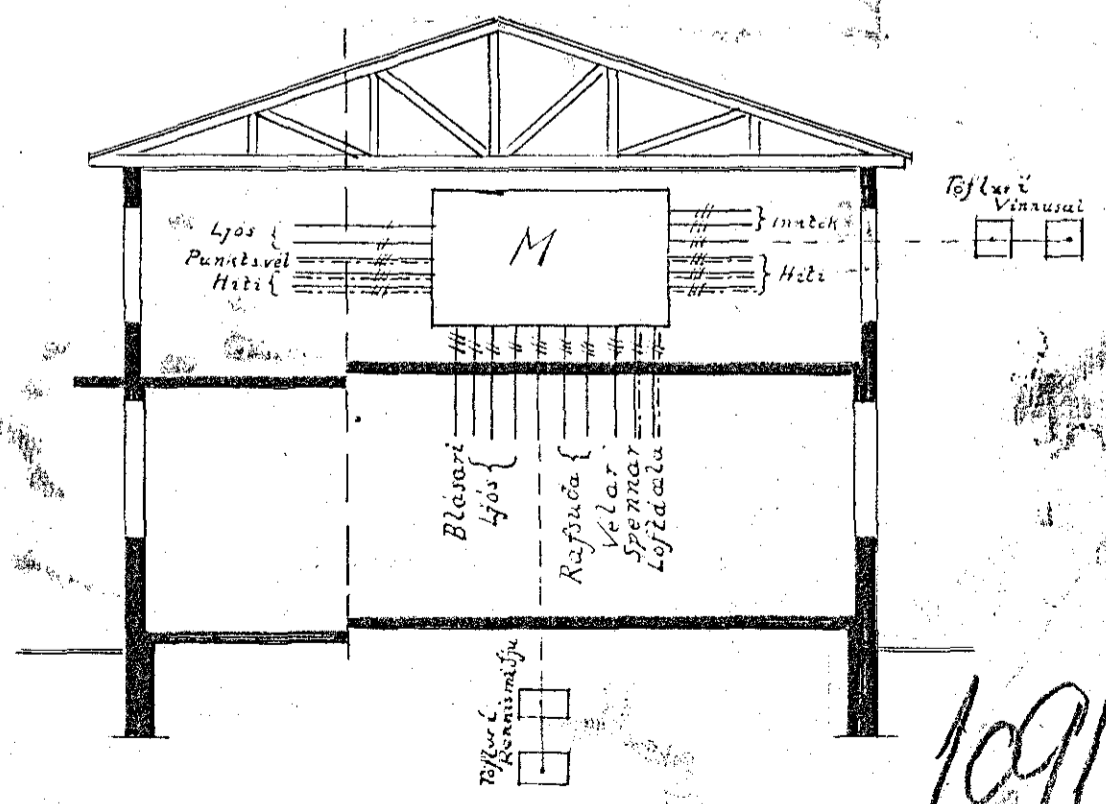
Þessi teikning þýttur myndlega

Mkv. 1:100.

Víðbygging
 610,0m²
 22,5
 587,5m²



Hér átt er við skrifstofu og kaffistofu



Útkomandi. 2

Hafnarfirði í febr. 1944
 Jónas Thoroddsen