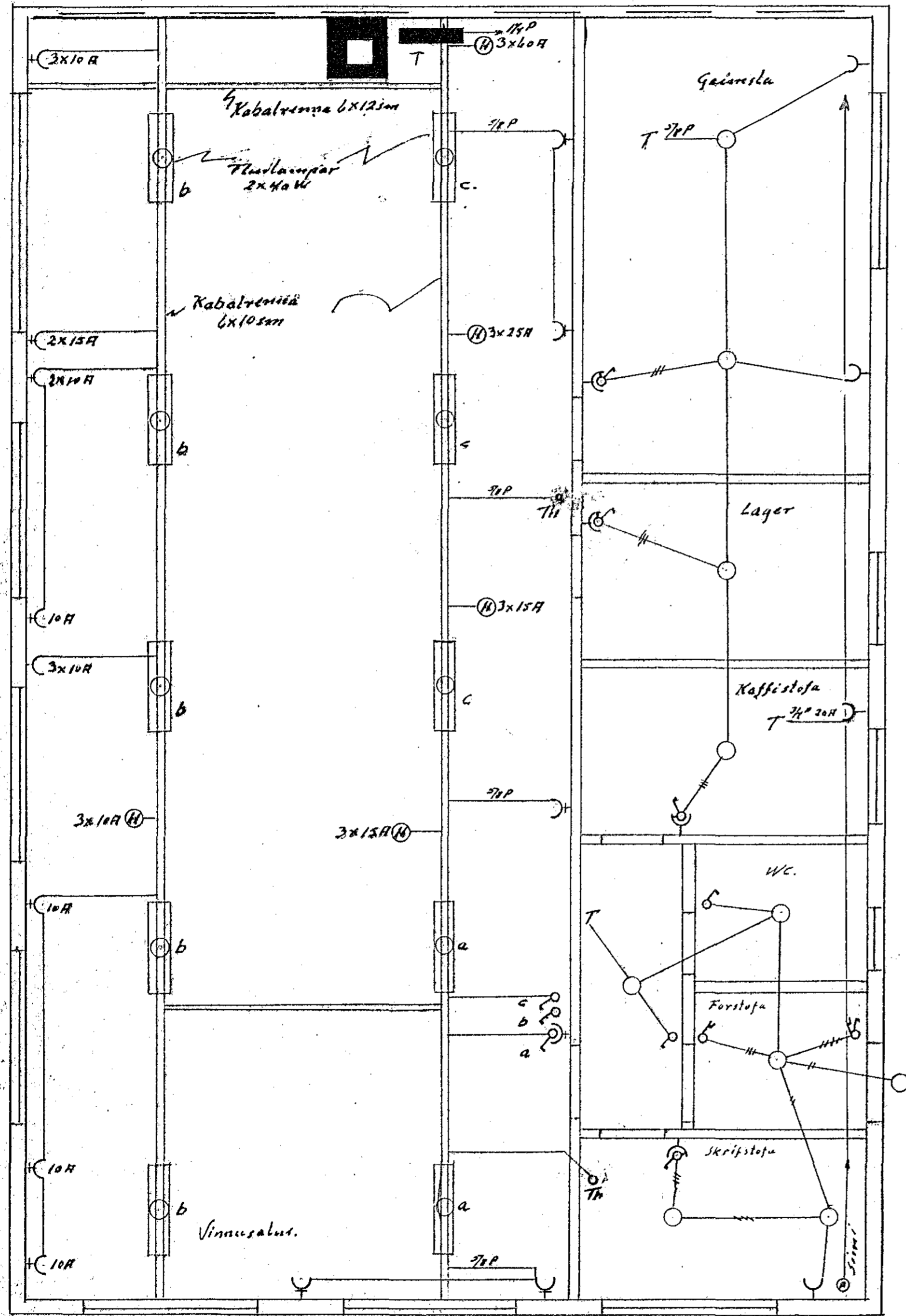


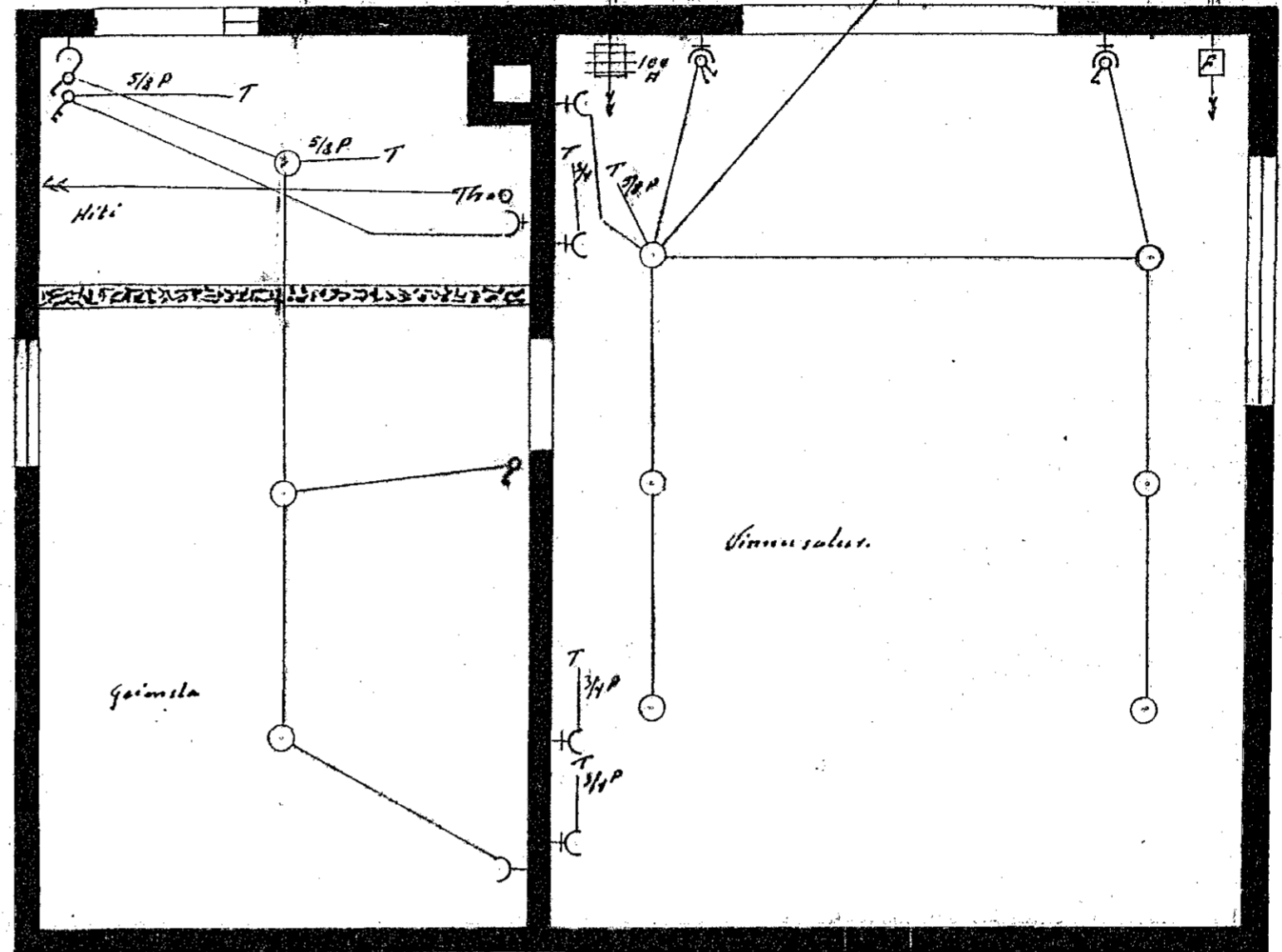
I ánaðarhúsi Guðna Guðmundss. við Melabraut, Hafnarf. 1:50

2 1/2" 17 mstr. Síng sparspír
vegna væðsamlegrar
viðleggjingsar
H. H.

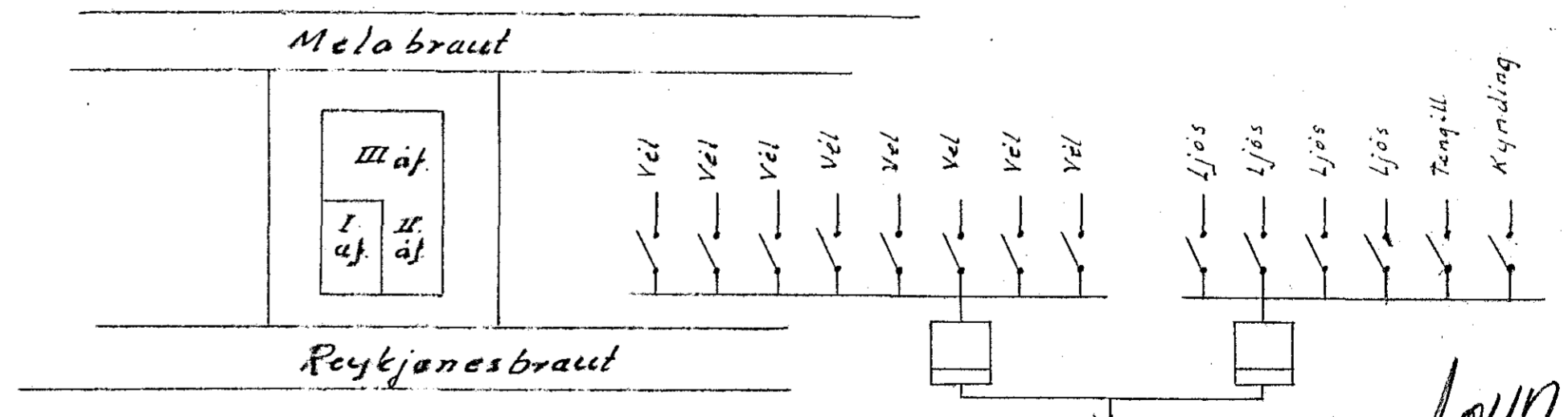
Hú sveita nr. 731 Teikning nr. 1047
Samþykkt þ. 13/10 1966
f. h. RAÞVEITU HAFNARFIJÐAR
Vegstjóri.
Eitrlitamaður rálagna



I af.



II af.



1:1000

1047-
Jón Bjarnason Sími 51366
Sept 1966. Malan 17

Inntök samþykkt 2.9.19. 1966
f. h. RAÞVEITU HAFNARFIJÐAR
Vegstjóri.
Eitrlitamaður rálagna