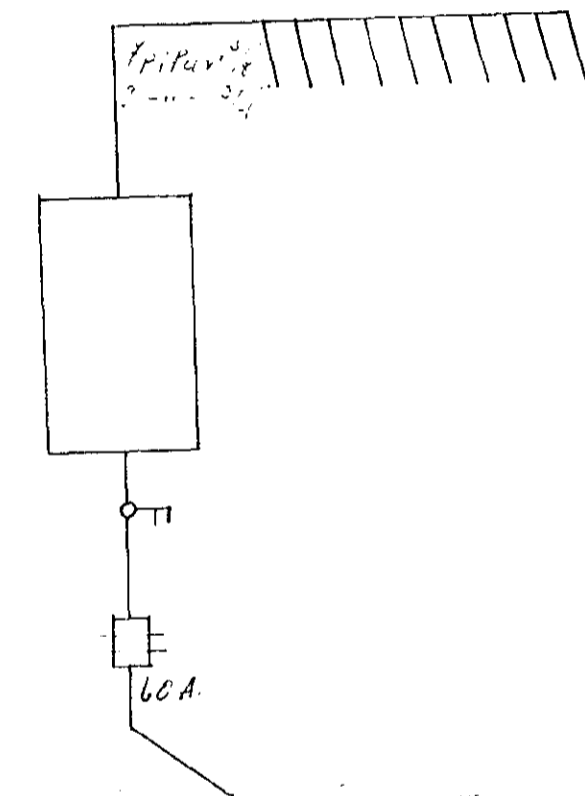
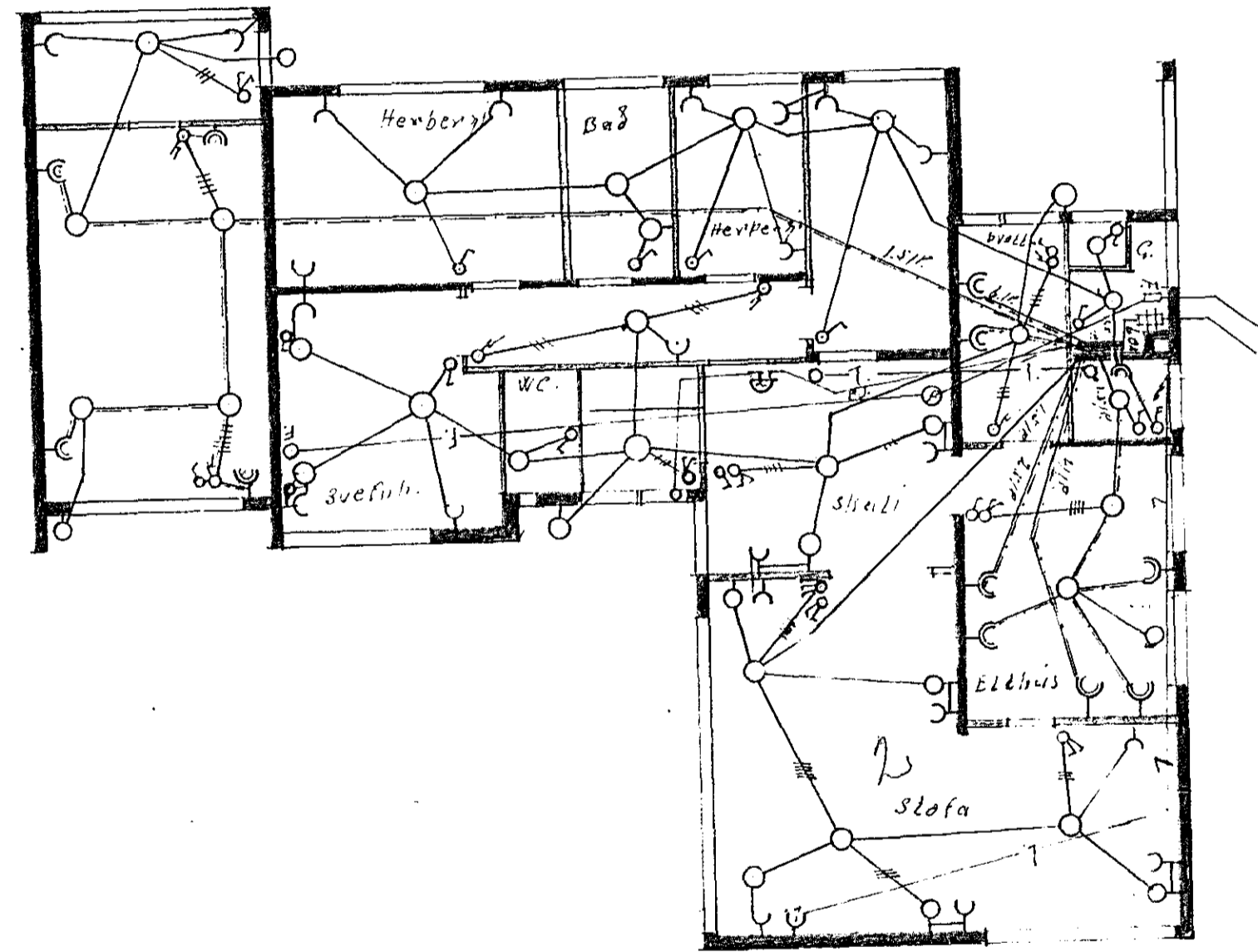


Húsið nr. 8 við Agülu Hafnarvíndi

Inntök 13.4.1966

L.h. HAFNARFJÁRDAR
 Verkefni
 Stefán V. Þorvaldsson

MKV. 1:100



Góttu hlíð.

Hafnarvíndi 1 Desember 1965
 Gunnar Pálmarsson

Svefnh. 8

992-