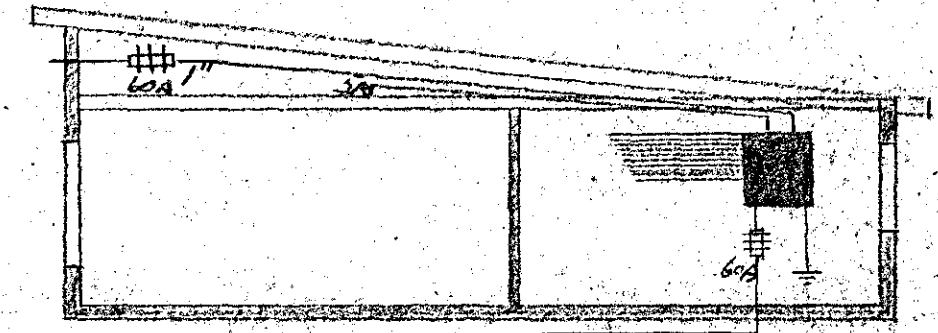
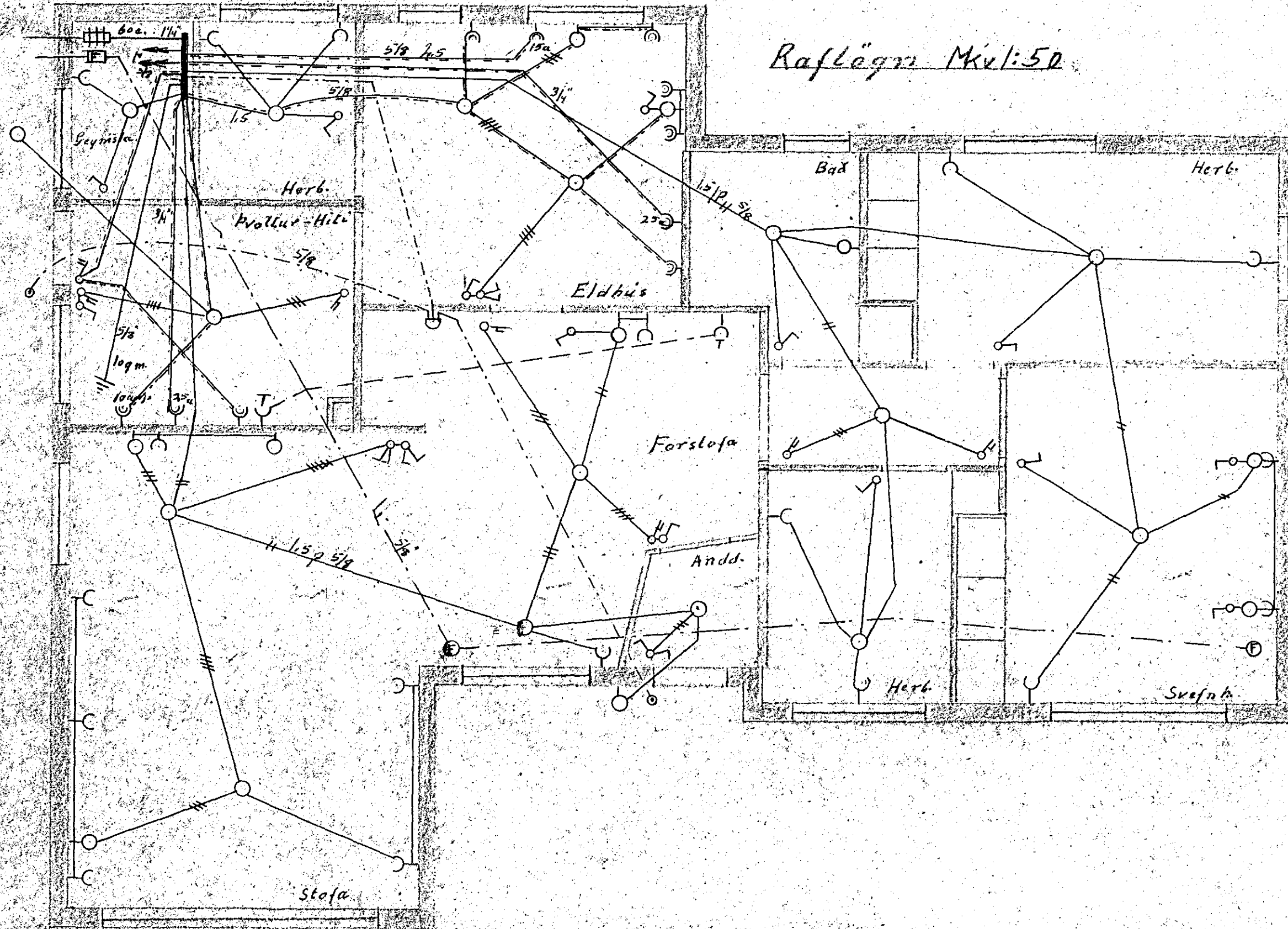


Erluhraun nr. 1

Rafhlögn MKV:50

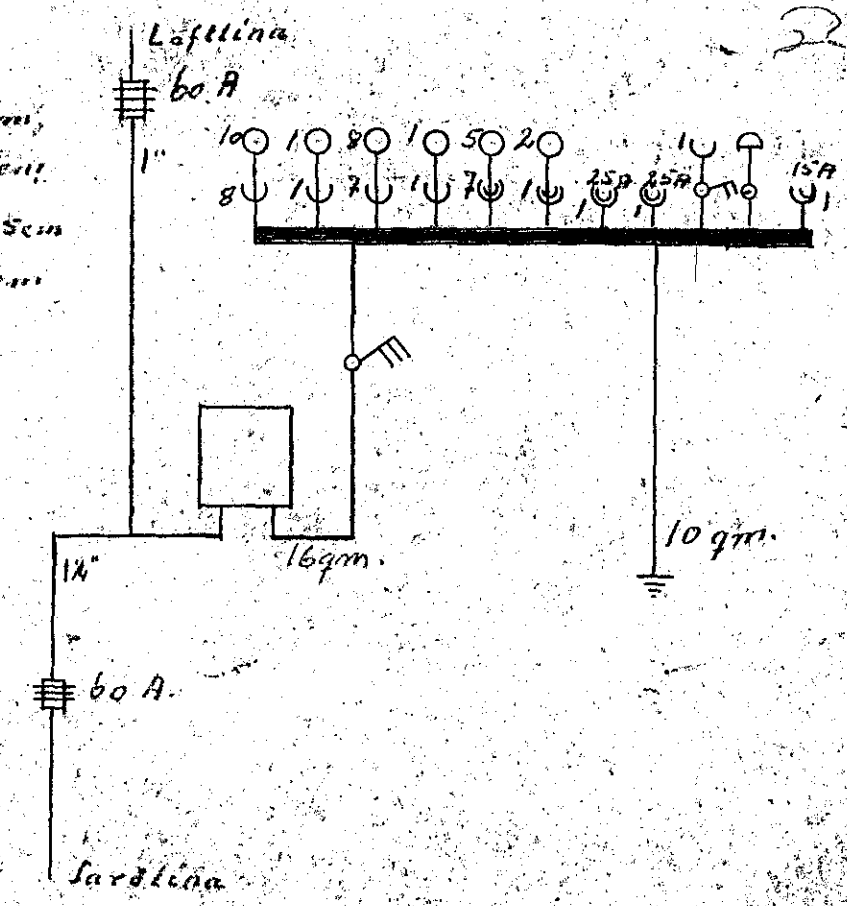


MKV:100

Inntök samþykkt 4.11.1961
 f.h. RAFVEITU HAFNARFIJARDAR
 Verkstjóri

Jón Þorvaldursson

- u - Lengla 20 cm
- u - Eldhúsi 105 cm
- u - Veggl. 155 cm



803 -

Hafnarfi 5. sept. 1961
 Jón Þorvaldursson