

Húýeila nr. 1735 Teikning nr. 863
 Samþykkt þ. 21-8-1963

f.h. RAÞVEITU HAFNARFJARDAR

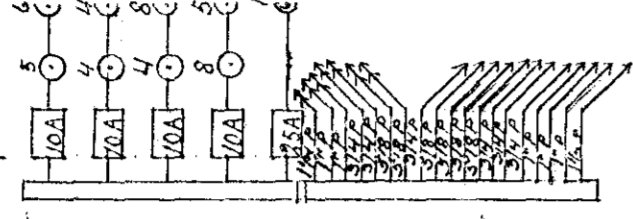
Elfríður Þorðardóttir
 Eflittemaður rafvæna

Raflegnin er samþykkt fyrir
EINFASA TÆKI

Inntök samþykkt 21.8. 1963

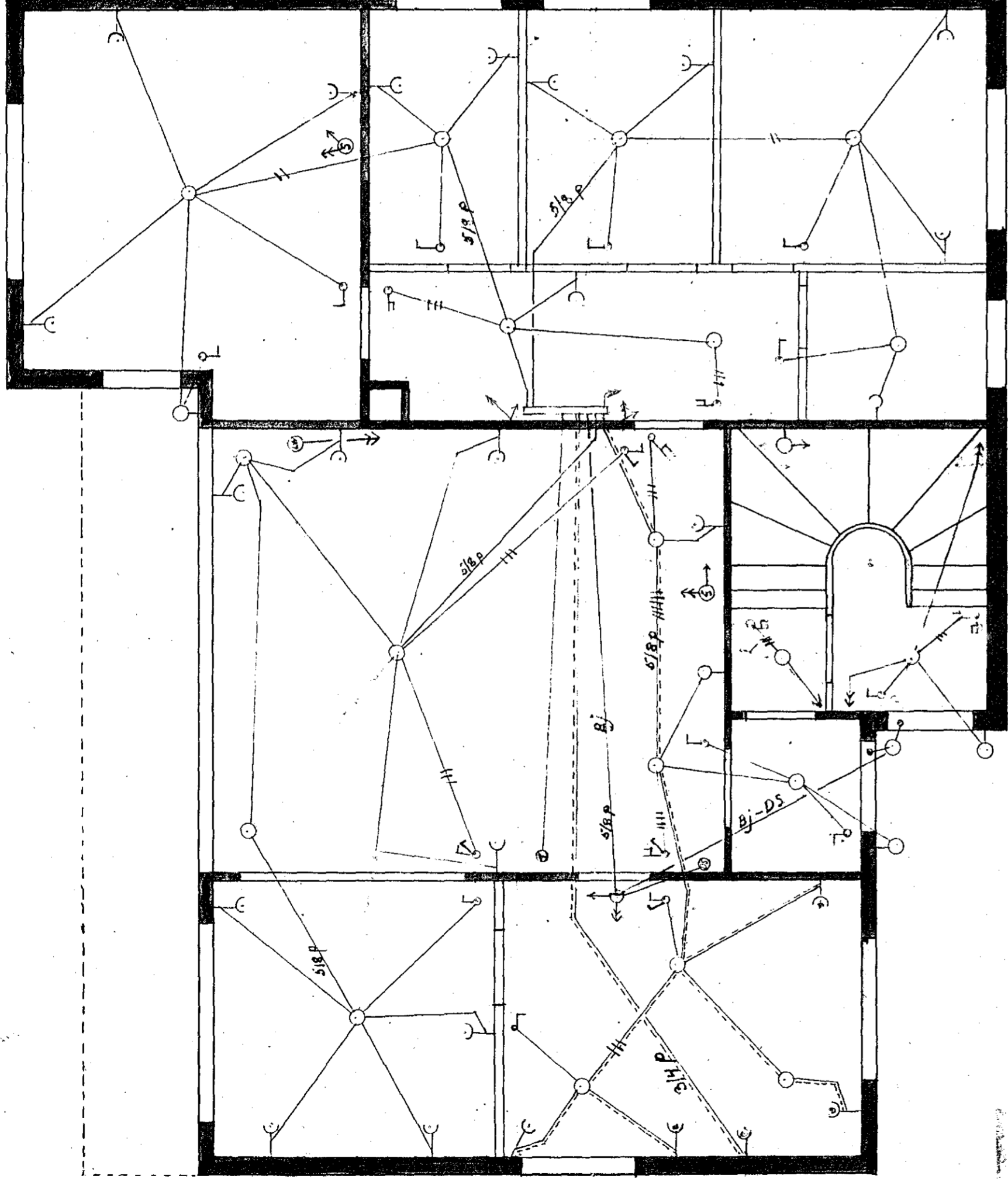
f.h. RAÞVEITU HAFNARFJARDAR

Elfríður Þorðardóttir
 Eflittemaður rafvæna

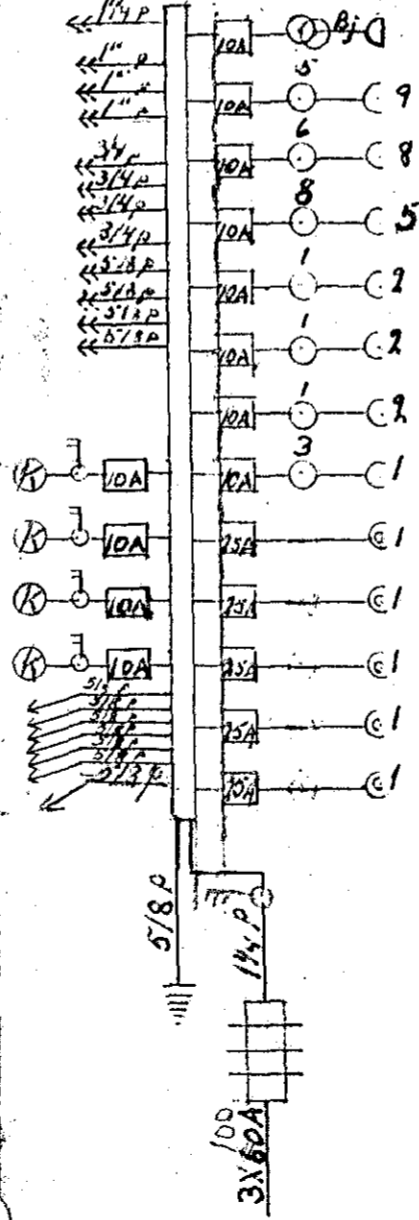


BLAD

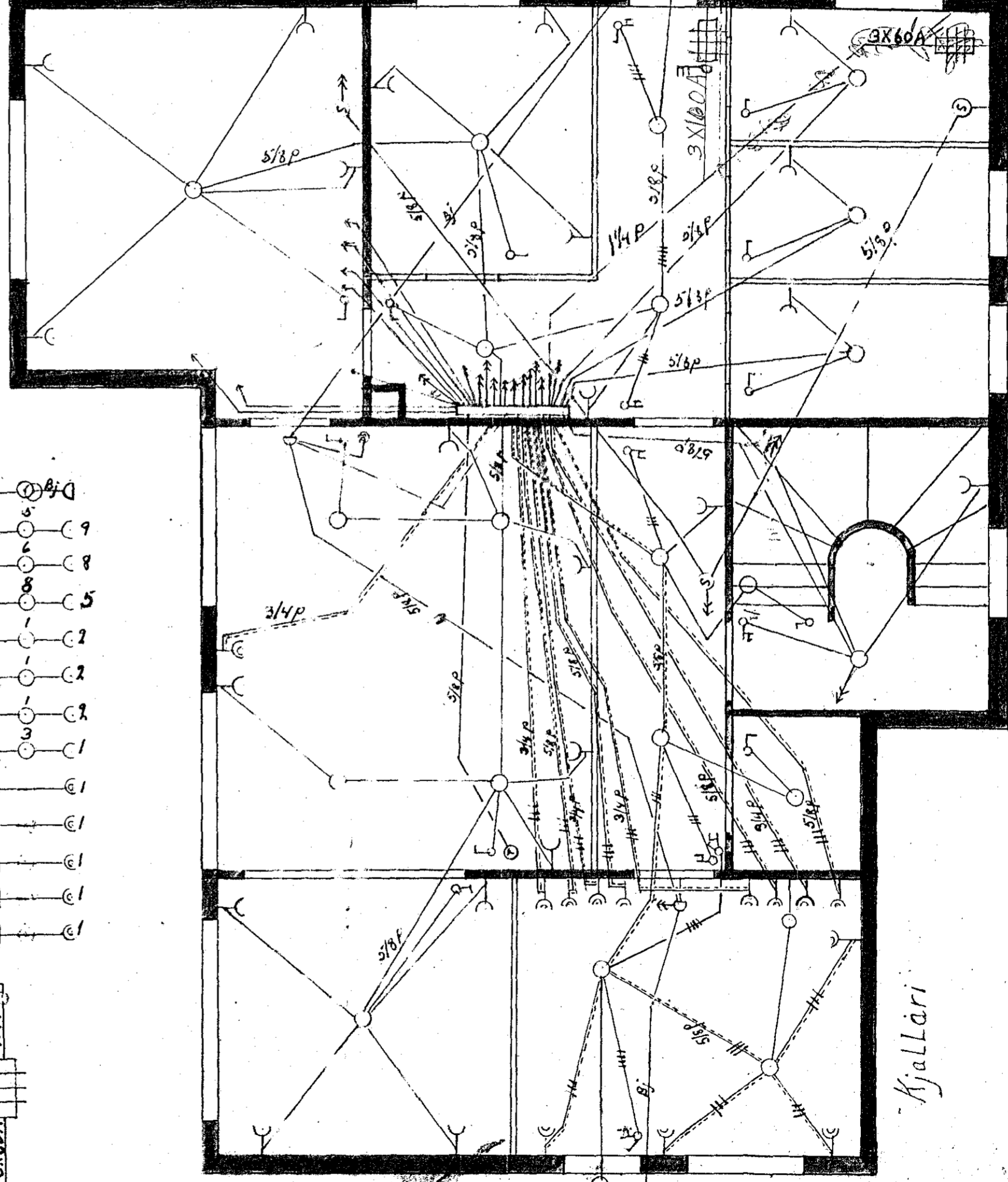
I



I.H.F.D



ÍSÓKLI



Rafplana-teikning
 M. 1:50 álduslið
 Hafnarfirði. 15-8-63

Guðm. Þorðarson

863 A

Sotuhúð

Kjallari