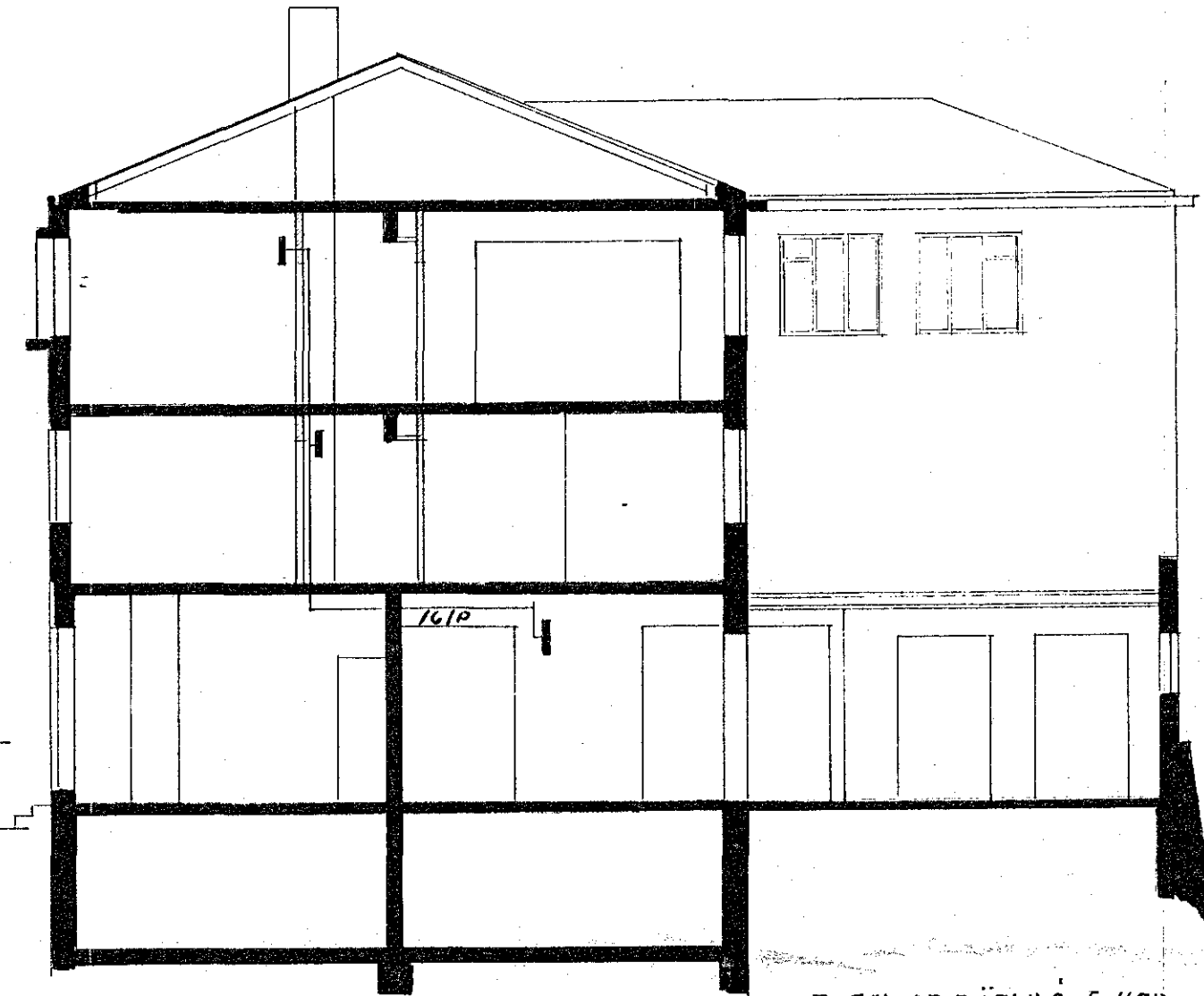
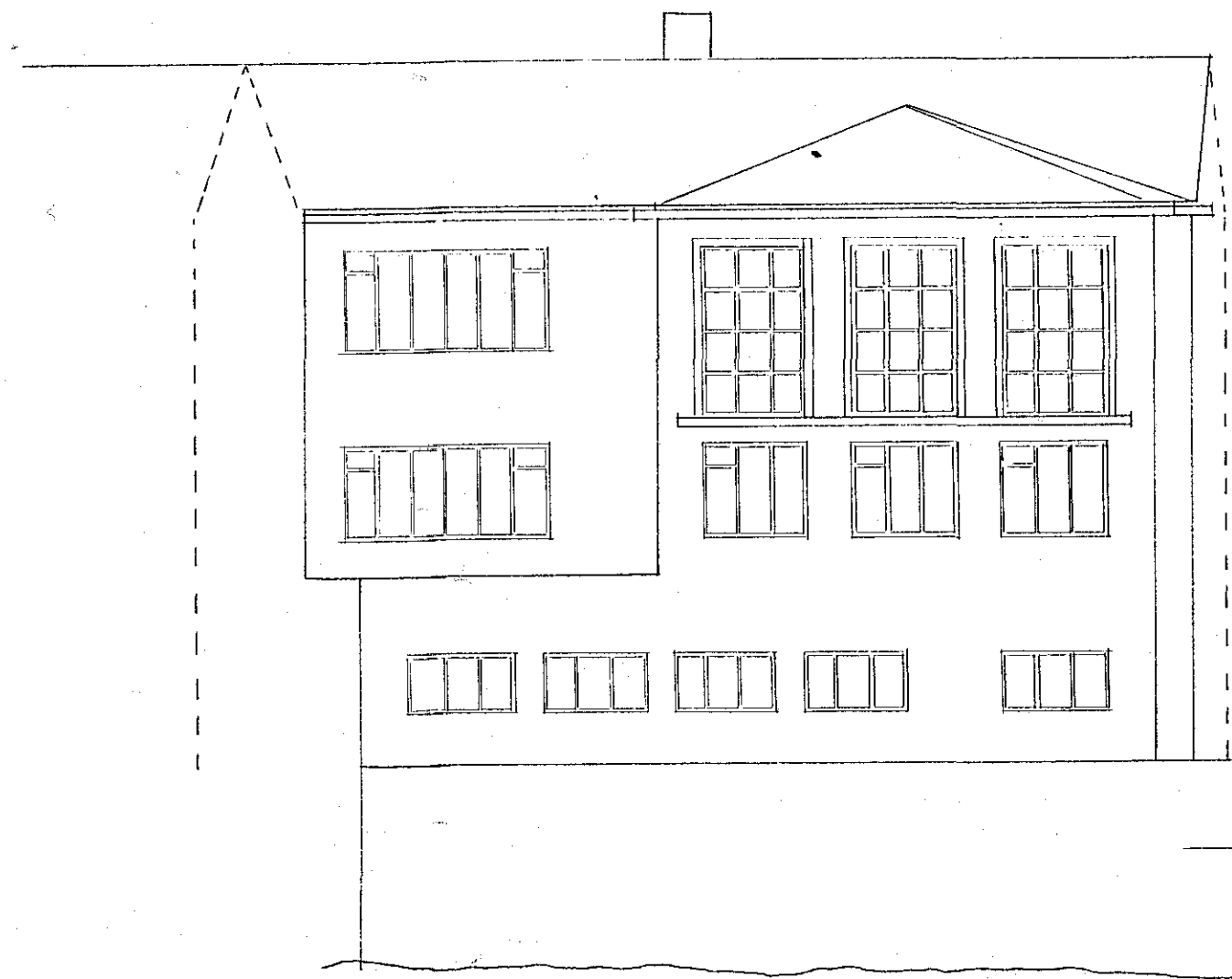
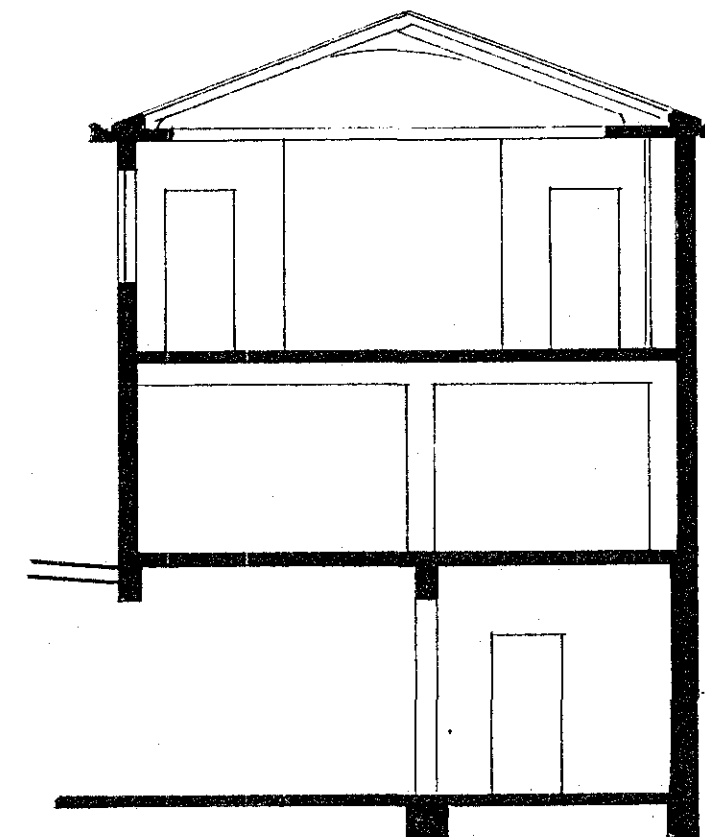


KJALLARI



STOFN AD TÖFLVA I HED
ER LAGDUR ÁÐUR, OG
TAFLAN SETTA I HED.



Ráfmagnsveita Reykjavíkur
AFGREIÐSLA HEIMTAUGA

Samþykkt þann 19
f.h. Ráfmagnsveitu Reykjavíkur

Raflogni samþykkt aðeins
fyrir 1-fasa áhöld.

917-