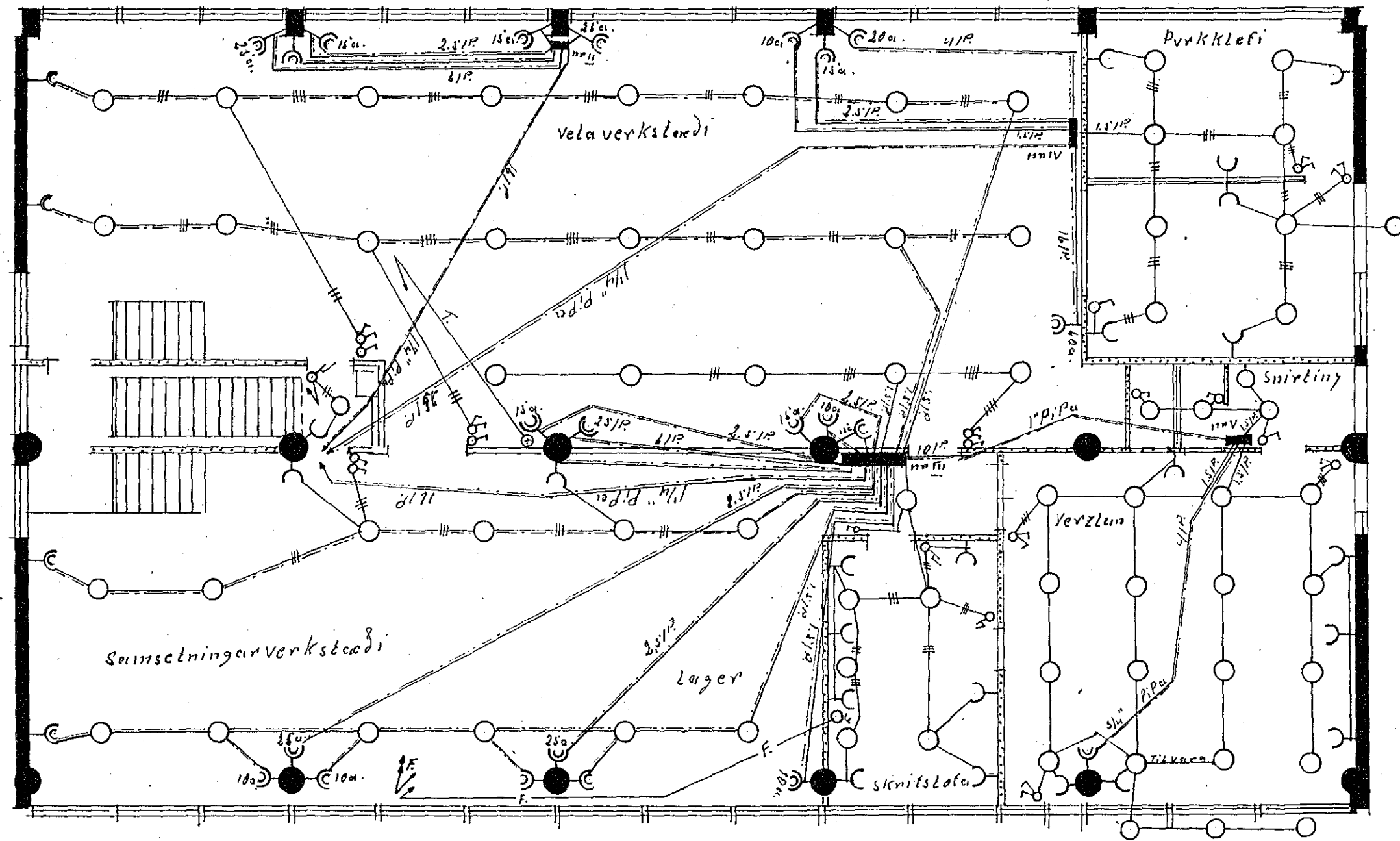


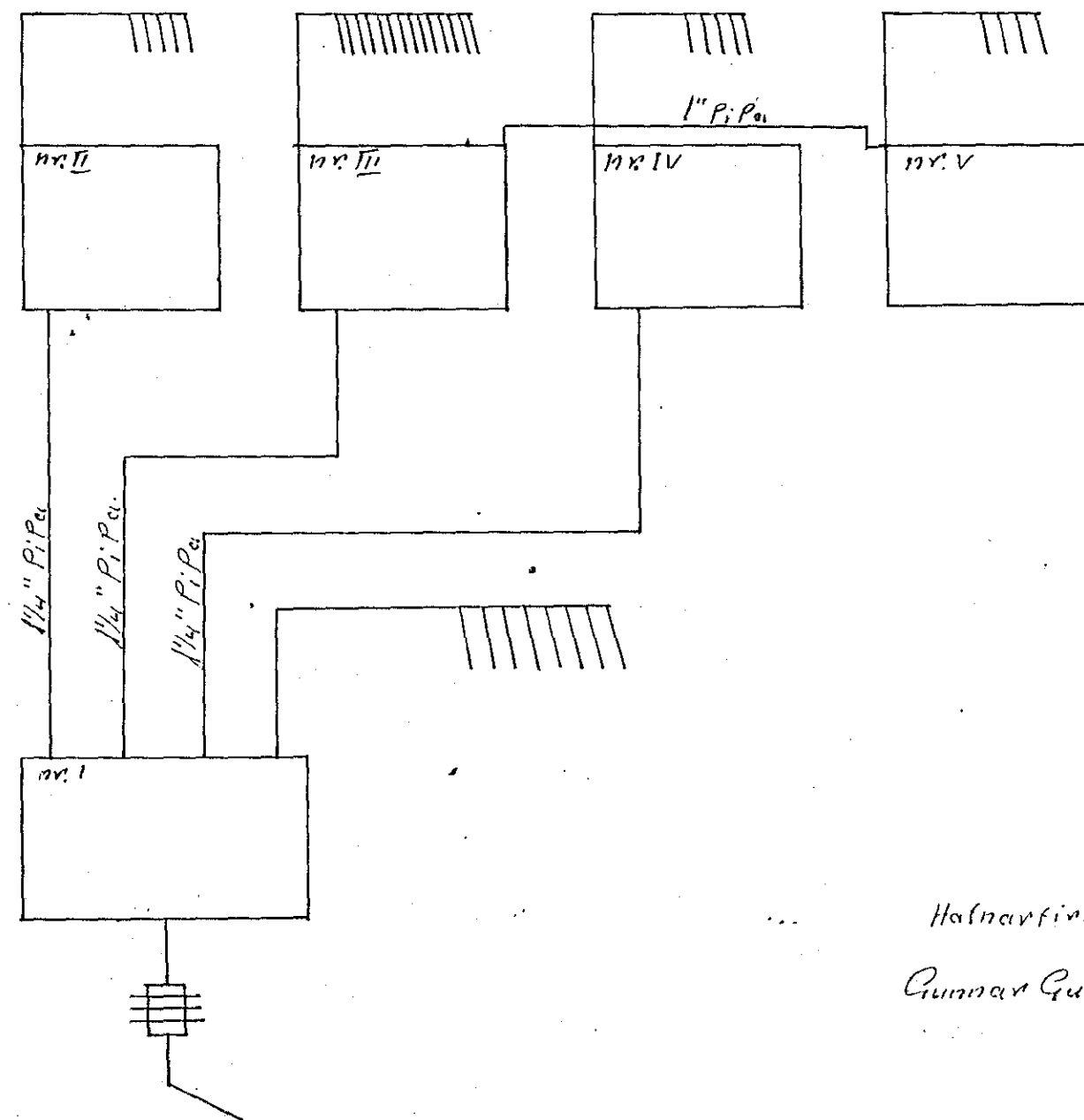
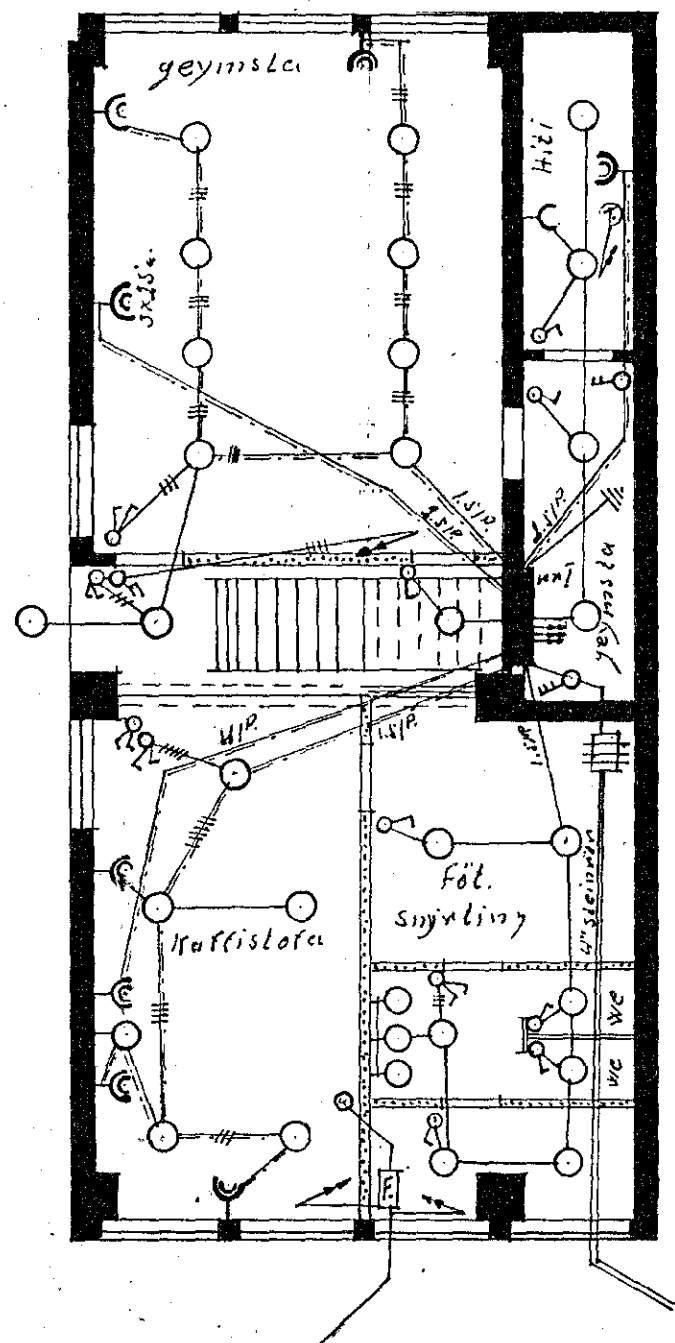
Verkstæðisbygging við Reykjavíkruveg

Eig. Sigurður Guðjónsson og Gunnlaugur Þorfinsson.

Húsvella nr. 1716 Teikning nr. 845
Samþykkt þ. 4-10 1962
f.h. RAÐVEITU HAFNAR-JARÐAR
Ólafur Þorvaldsson
Eftirlitsmaður rannsóknar



MKV. 1:100



Hafnarfjörði 1. September 1962
Gunnar Guðmundsson.

845 B