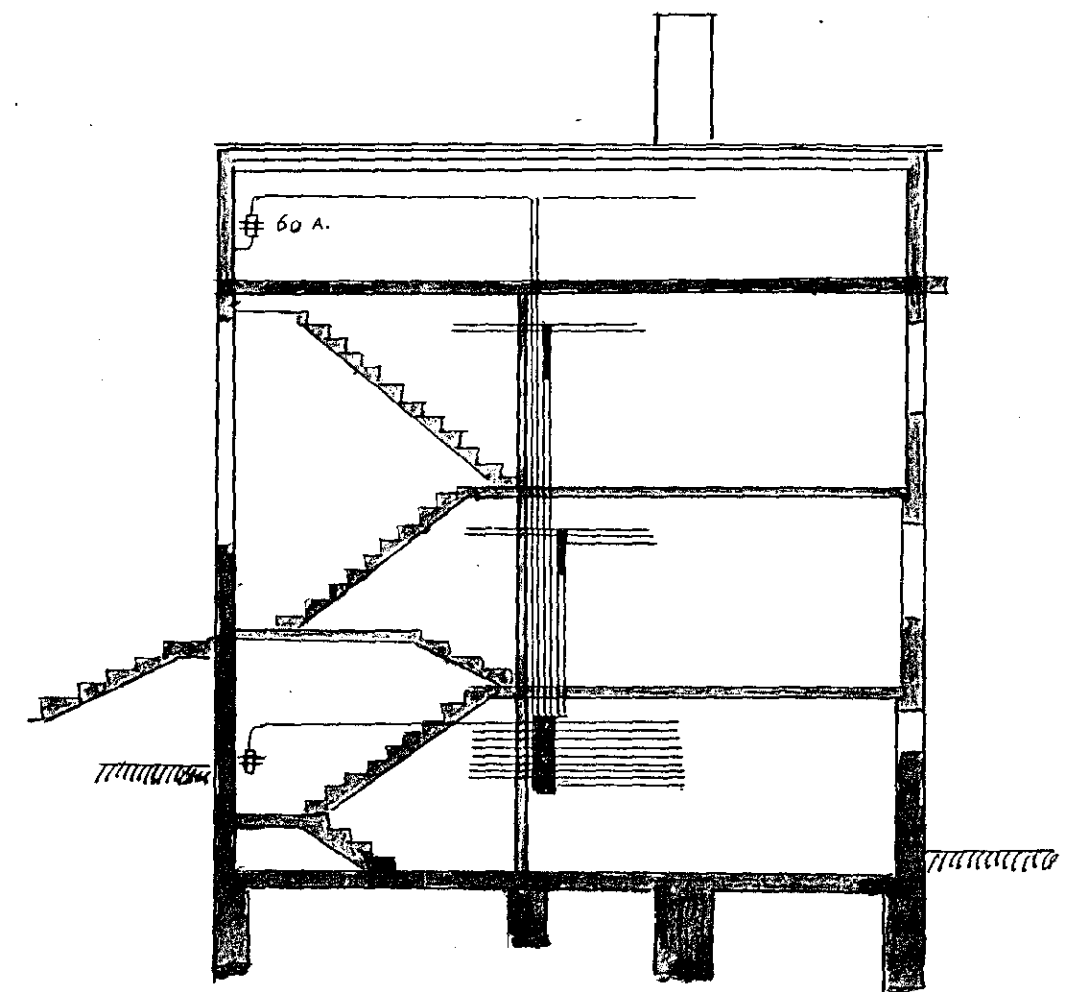


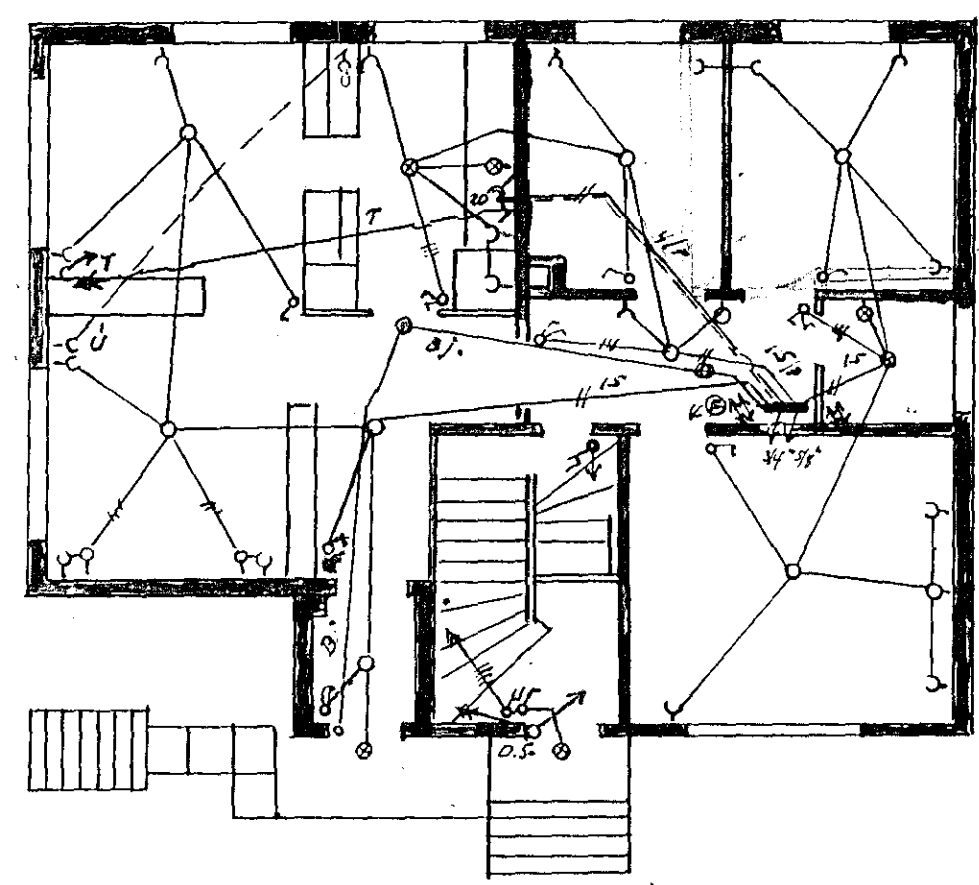
Arnarhraun 16, Hafnarfirði.

Rafmagnslögn.

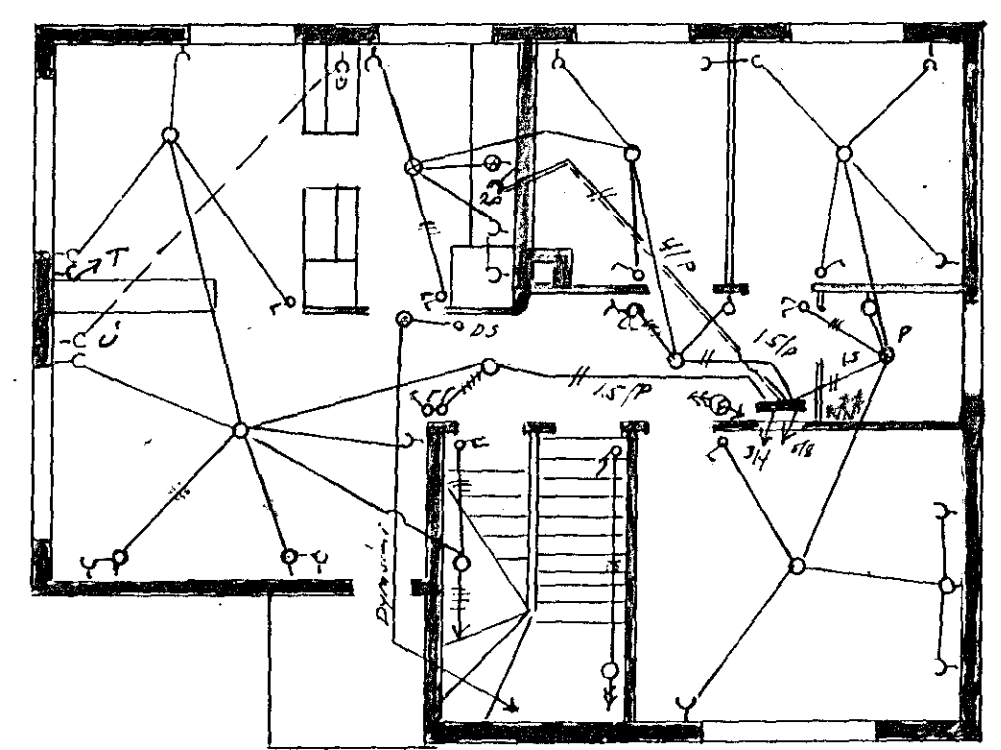
K. 1:100



Skurður

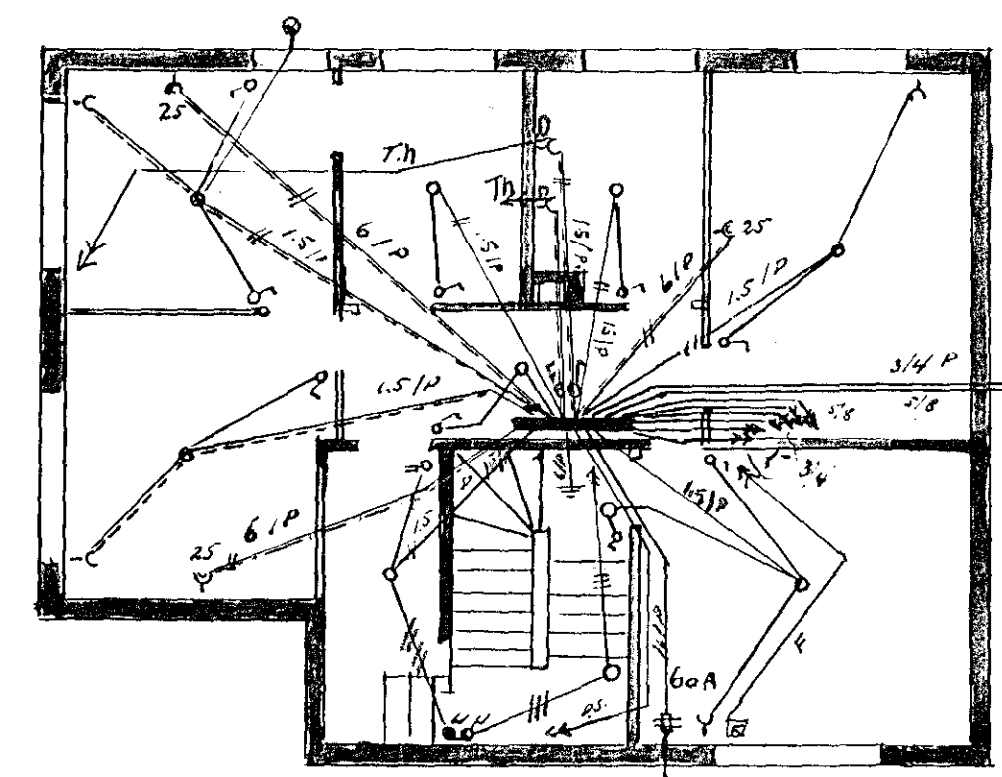


1. Hæð



2. Hæð

Inntök sambýkkt 12.12. 1959
 F.h. RAFVEITU HAFNARFIJARDAR
 Verkstjórn
Ragnar Þorsteinsson



Kjallari

Reykjavík í tóni 1959.
 Óskar Hannsson

688.-