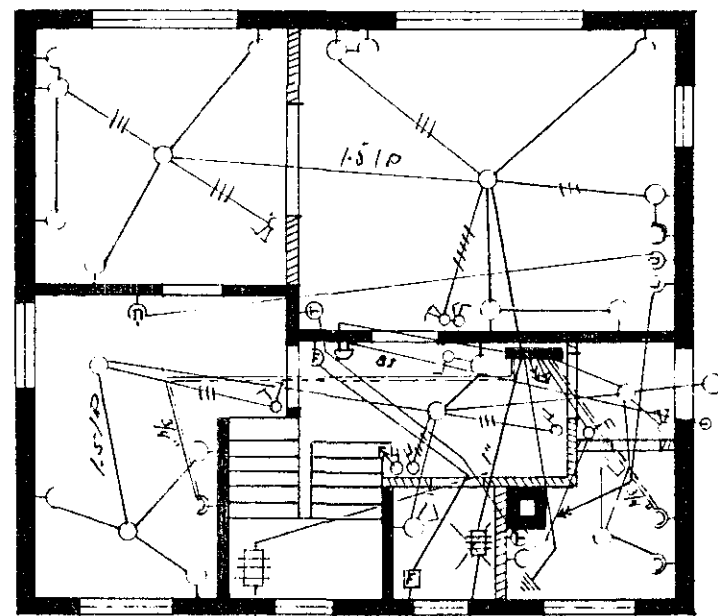
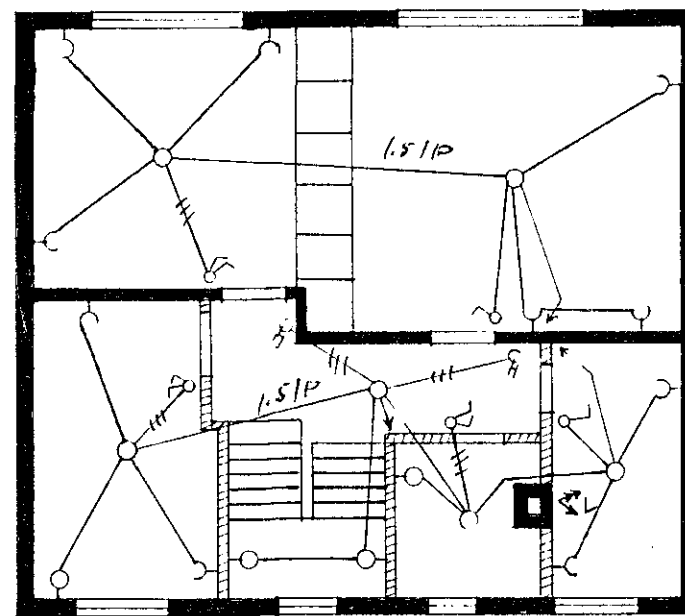


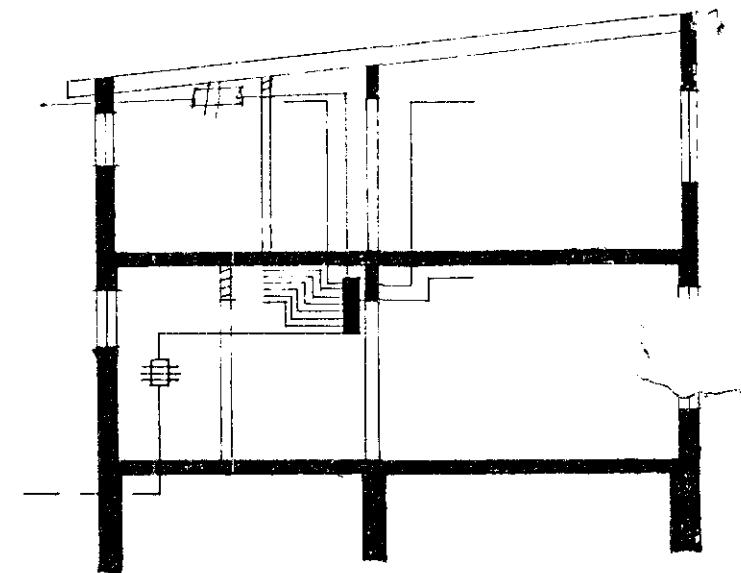
Húsveita nr. 1506 teikning nr. 662
 Samþykkt þ. 2. okt 1958
 F.h. RAFVEITU HAFNARFJARDAR
Verkstjóri
 Umsjónarmaður rullagna



1. hæð.



2. hæð.



Inntök samþykkt 3.11.1958
 f. h. RAFVEITU HAFNARFJARDAR
 Verkstjóri
Baldur Sigurðsson

662.-

Bröttukinn nr. 26.
Raflögn
 MKV: 1:100 Hafnarfirði 24/8'58.
 Baldur Sigurðsson