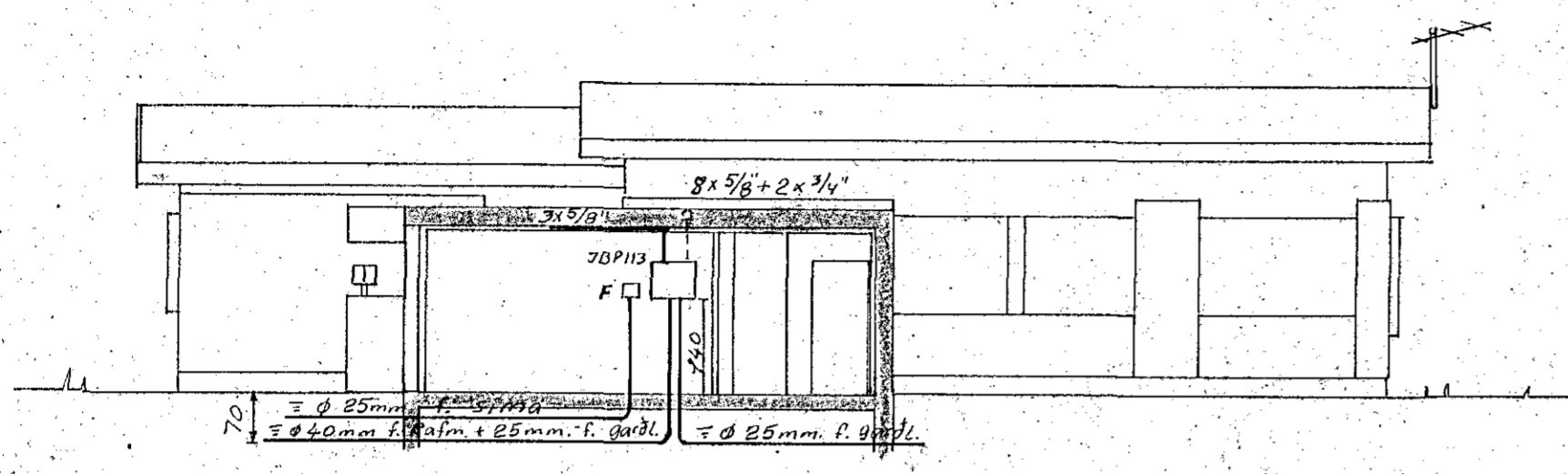
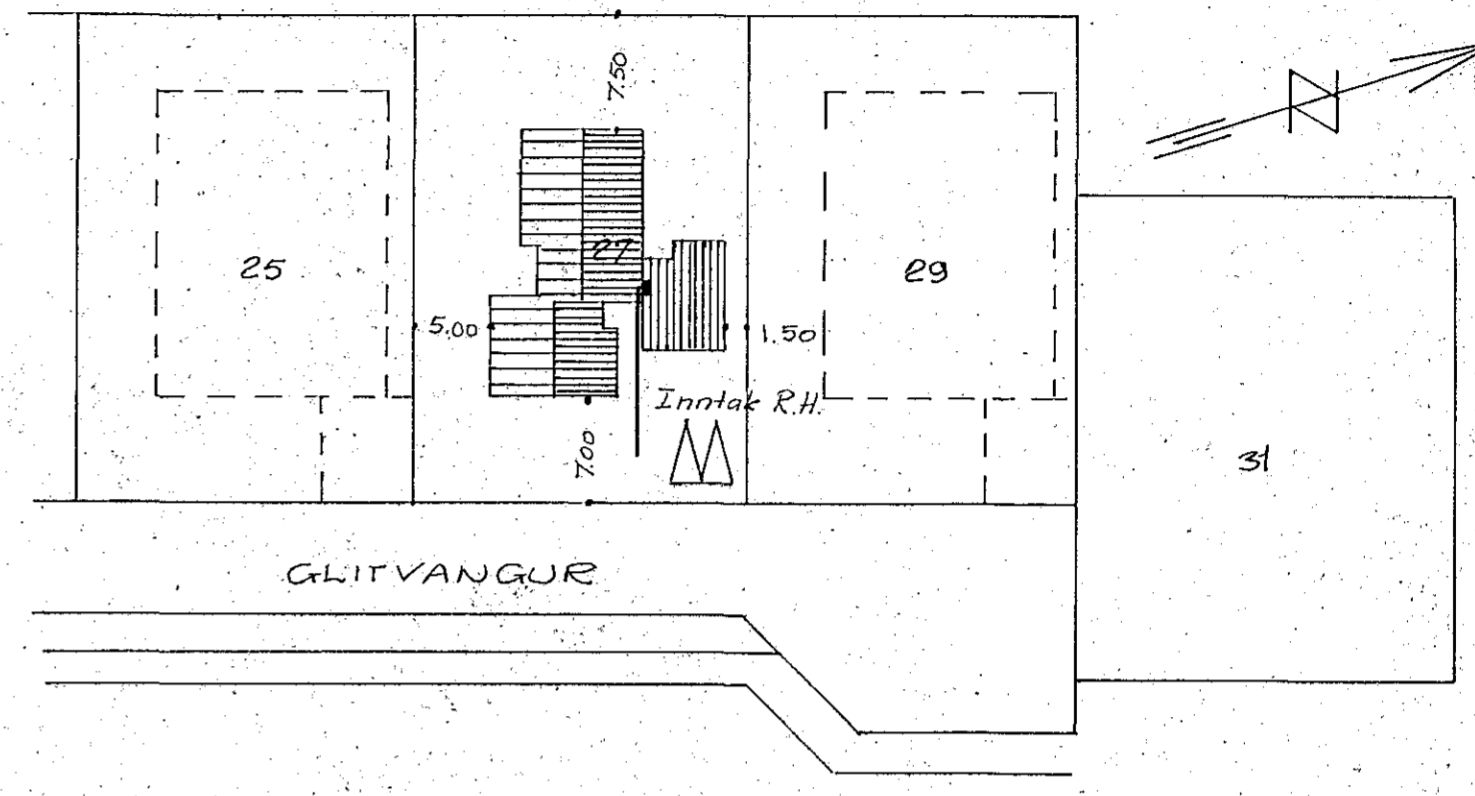


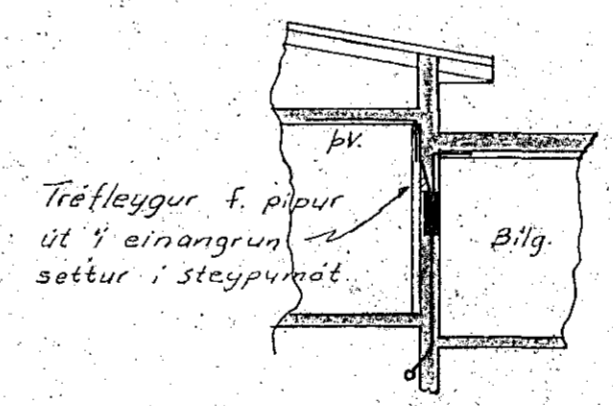
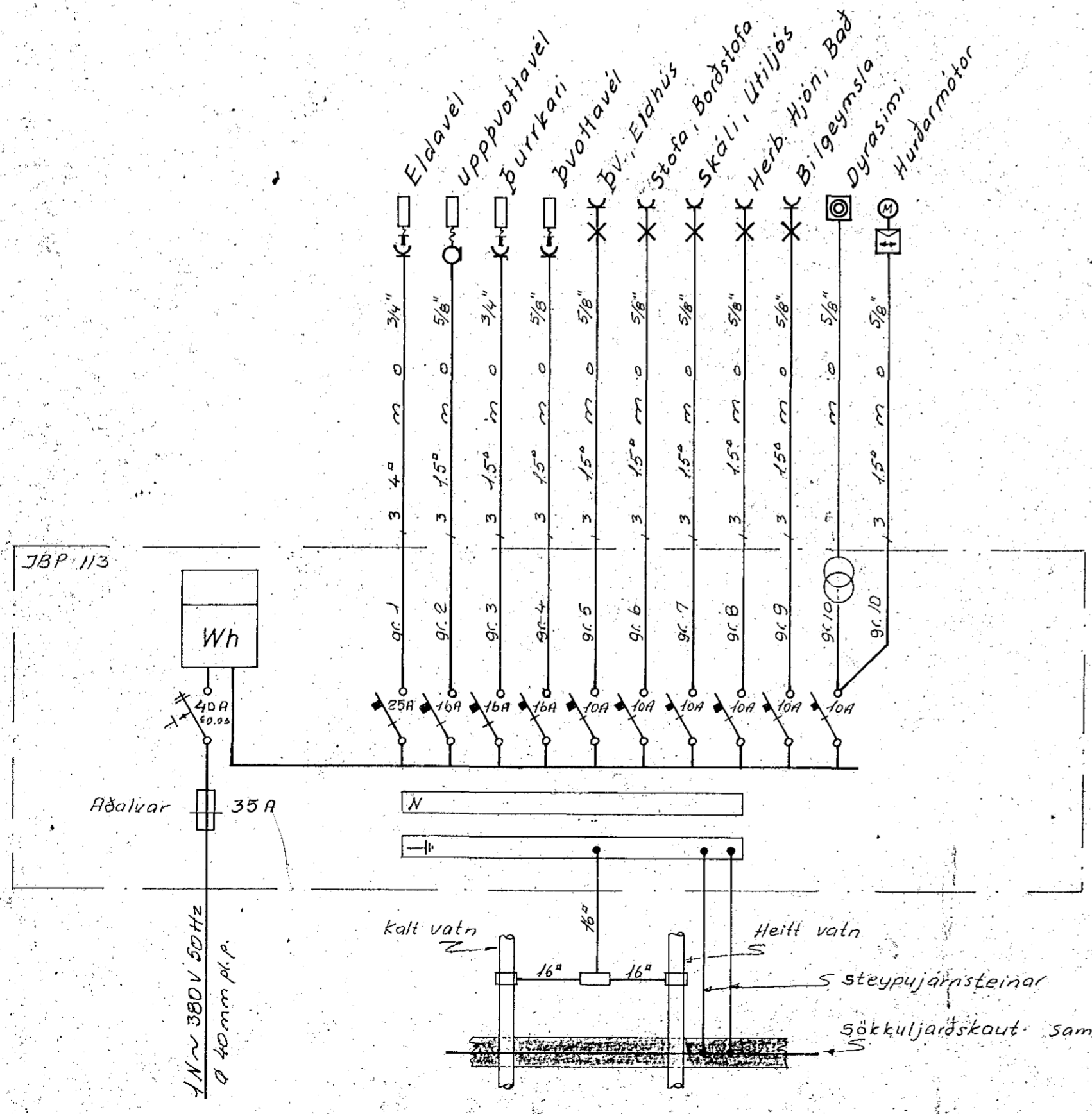
Inntök samþykkt 11.11.1977  
 f.h. RAEVEITU HAFNARJARDAR  
*Flús Eiríksdóttir*



SNID A-A Í INNTAK R.H.  
 M. 1:100



AFSTÖÐUMYND M. 1:500



SNID B-B M. 1:100

SKÝRINGAR:  
 Lagnir eru huldar 5/8" pípu-lagnir og taugar 3x15". Hæð rofa sé 105sm.  
 Hæð tengla sé 20sm.  
 F=Bæjarsími L=Loftnet D.S=Dyrasími  
 Málstraumur rofa og tengla sé 10A } *Nanna annars sé gætið*

GLITVANGUR 27 HAFNARF,	mælikv. 1:100, 1:500
	dags. SEPT. 1977
AFSTADA, SNID, SKYRINGAR EINLÍNUMYND	teikn. TS.   bl. 1 af 2
	samb. <i>Fransli Sveinlgs.</i>
	teikn. nr. 23-A57

8308