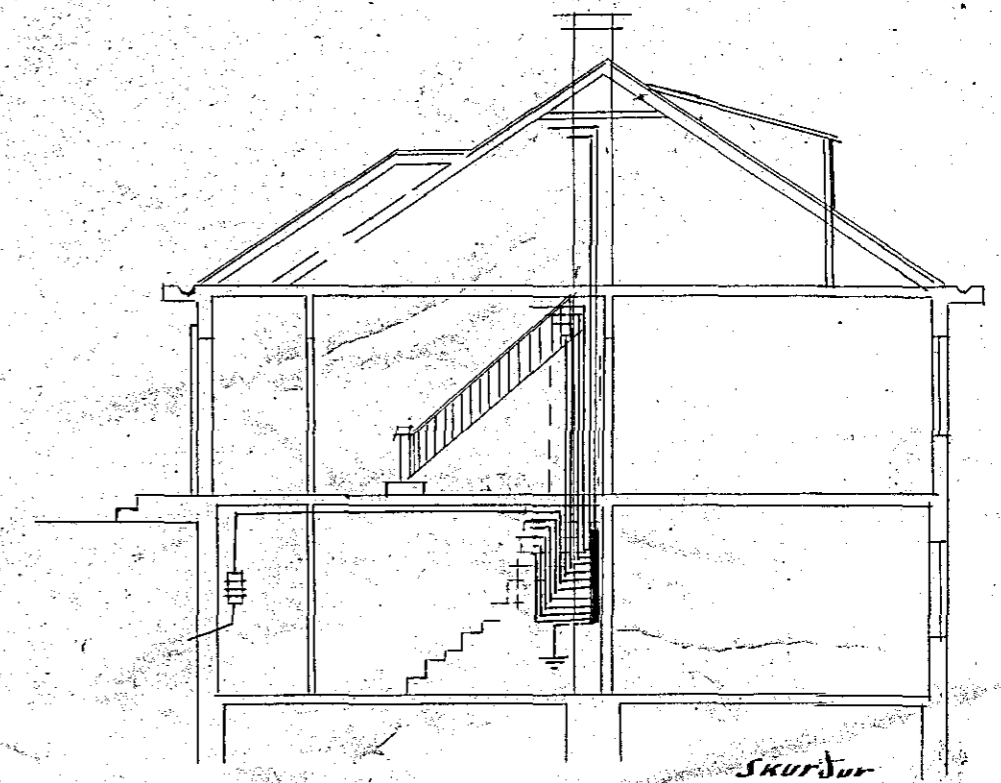
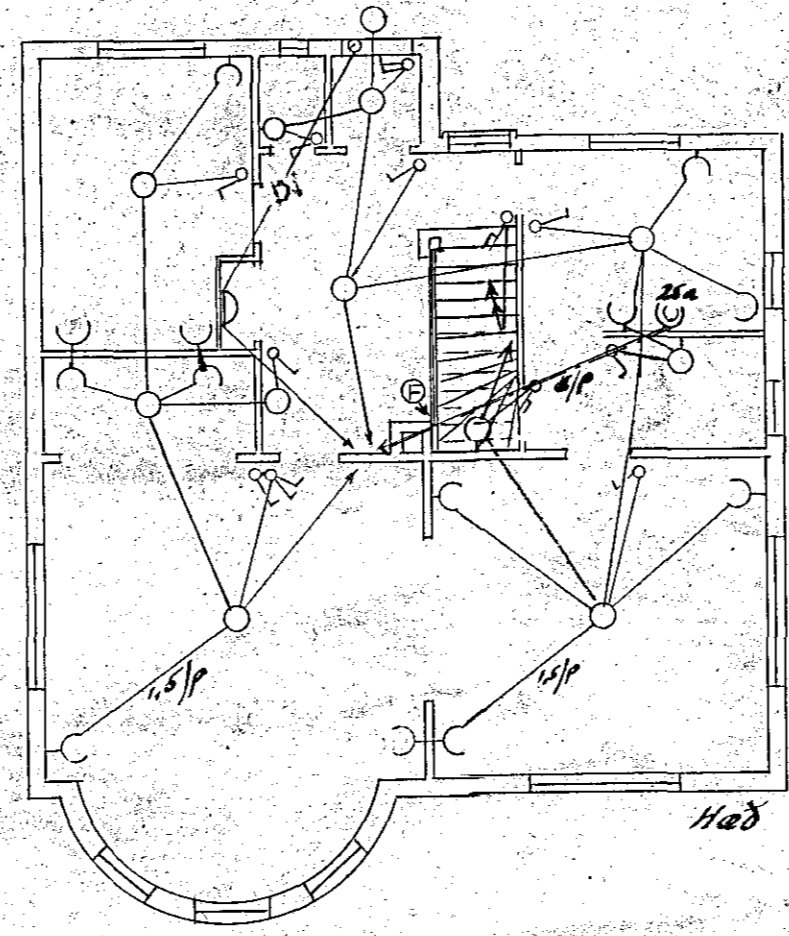
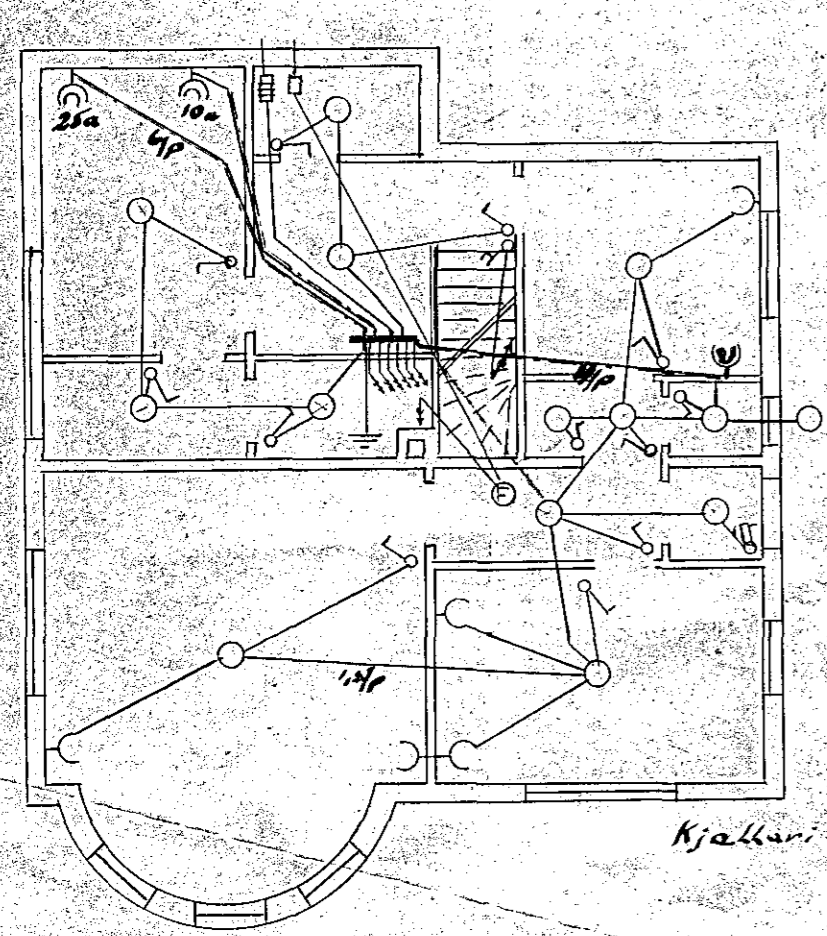


Húsvæta nr. 810. Teikning nr. 228
 Samþykkt þ. 12. sept. 1949
 F.h. RAÐVEITU HAFNARFJANÐAR
 Kristján Sigurðsson
 Umsjónarmáður ráðgjafa

Þessa vörður er ræð fyrir loftlínur
 innlaka.
 Þrú Sigurðsson

Húsið nr. 6 við Hólabraut Hafnarfirði
 Raflögn



228

Hafnarf. í okt. 1949
 Þor. Sigurðsson